



# Altec Lansing iM7 Teardown

The Altec Lansing iM7 looks impossible to disassemble, but with a bit of work, you can get it apart to repair, clean, or just look at its insides.

Written By: Casey Friday



## INTRODUCTION

If you're looking to replace the retaining clip that holds the iPod door in, you might be out of luck. It seemed to be more work than was worth it in my case, but I was able to clean the circuit board with electronic contact cleaner, and I also cleaned all the aluminum grills and dust from the plastic.

**Edit:** Well, I ordered a sample from the company that provides the clip for the door, and you simply have to pull the broken door latch out with some pliers, then push the new one in, and your door works just like it's new! The name of the company is Richco, a part of Essentra Components, and the part number is DL-1X. They shipped two of them to me for free. Awesome!

---

### TOOLS:

- [Magnetic Phillips Screwdriver](#) (1)
  - [Flathead Screwdriver](#) (1)
-

## Step 1 — Altec Lansing iM7 Teardown



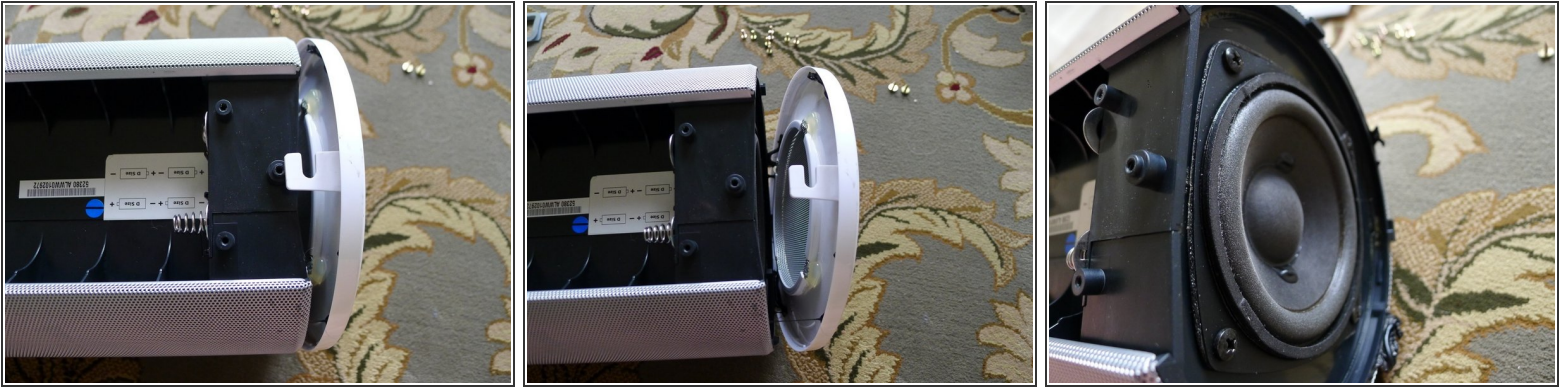
- Remove the rubber surround from the outside of the carry handle.
- Unscrew the two Phillips screws from the inside of the carry handle area.

## Step 2



- Remove the two battery doors. Remove the 8 Phillips screws from the bottom of the device. This is easiest with a magnetic Phillips screwdriver.
- Lift the bottom plate off of the device.

### Step 3



- Twist the side subwoofer grill counter-clockwise to release it from the case.
- You can then remove the grill by tugging a bit on it. There is adhesive keeping it stuck to the main body, so pull slowly.
- You now have access to the side-firing subwoofer (and the passive driver on the other side). You can remove the four Phillips screws and replace these speakers, if you're stopping here.

### Step 4



- Remove the two Phillips screws in the remote control bay.
- Pull the rear cover off of the main body. The top will still be attached to a "clip-in" connection, so don't pull too hard just yet.
- You can also remove the rubber lining from the carry handle for cleaning now.

## Step 5



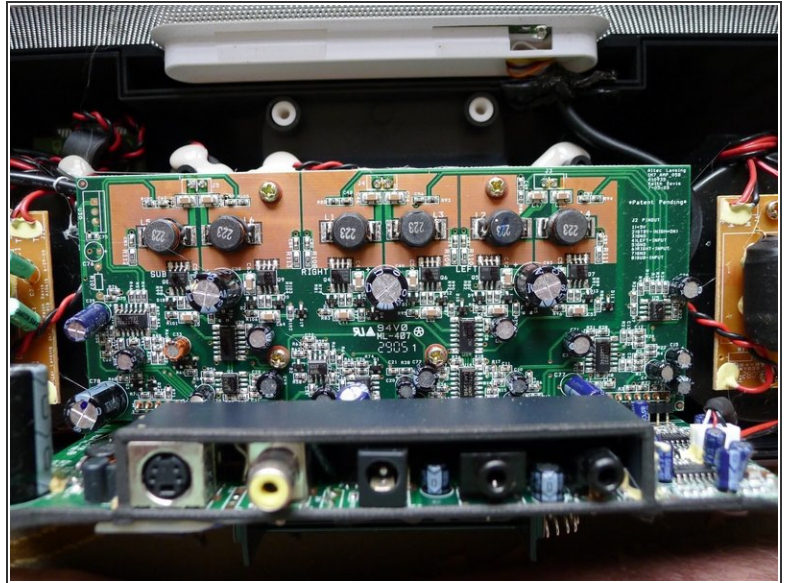
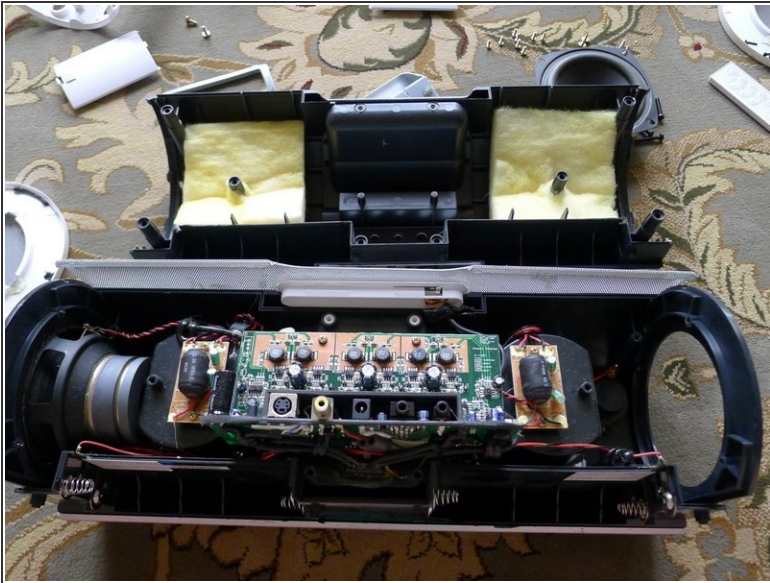
- You can now remove the two rear mesh aluminum grills. They simply clip on to the top and bottom, so you only have to pull them off. The top has adhesive applied to it.
- Do this on both sides, and you can now clean the rear plastic of the device.

## Step 6



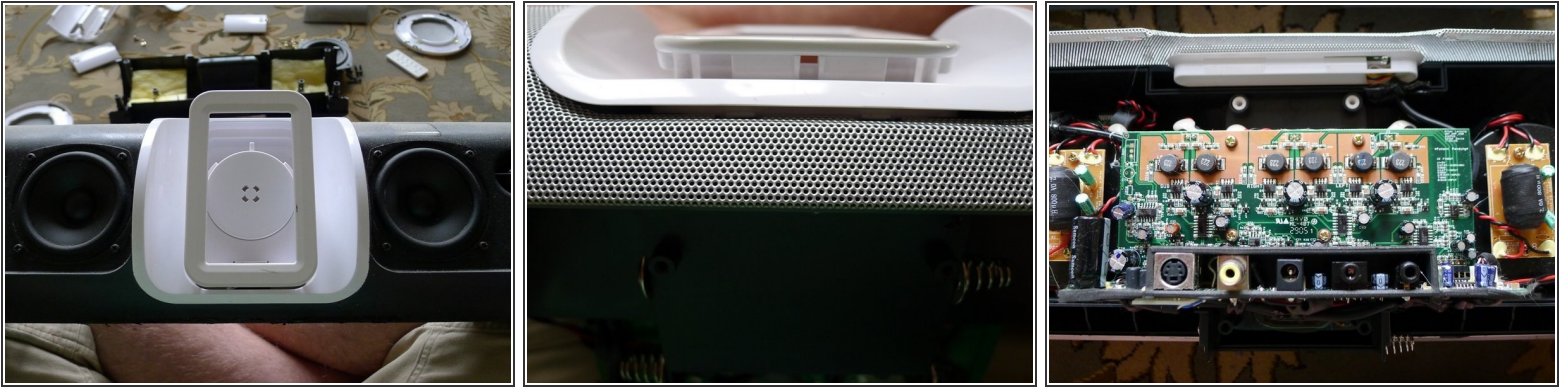
- Remove the rear white plastic area by slowly prying it up with a flat head screwdriver. Be sure to only pry at the top (near the power button), since that's where the piece clips in.
- The unit clips in almost parallel with the surface the iM7 is sitting on, when upright.

## Step 7



- You can now pull off the back half of the device to expose the amplifier and internal circuitry.
- This is a good opportunity to clean the amplifier's circuitry with electronic contact cleaner.

## Step 8



- The dock piece is connected to the circuit board via wires that you can see move while you pull it forward.
- I chose to not remove the dock portion because I didn't want to disconnect any wires from the board, but if you're doing a repair, feel free to take this even further. You should have made it far enough through the teardown to get as far as you need from here.
- To replace the door latch, you actually don't have to take the unit apart at all. Just request a sample of part DL-1X from Richco Components, and they'll send you two for free! Pull the old one out with pliers (little black clip), and push the new one in until it 'snaps' into place.

To reassemble your device, follow these instructions in reverse order.