

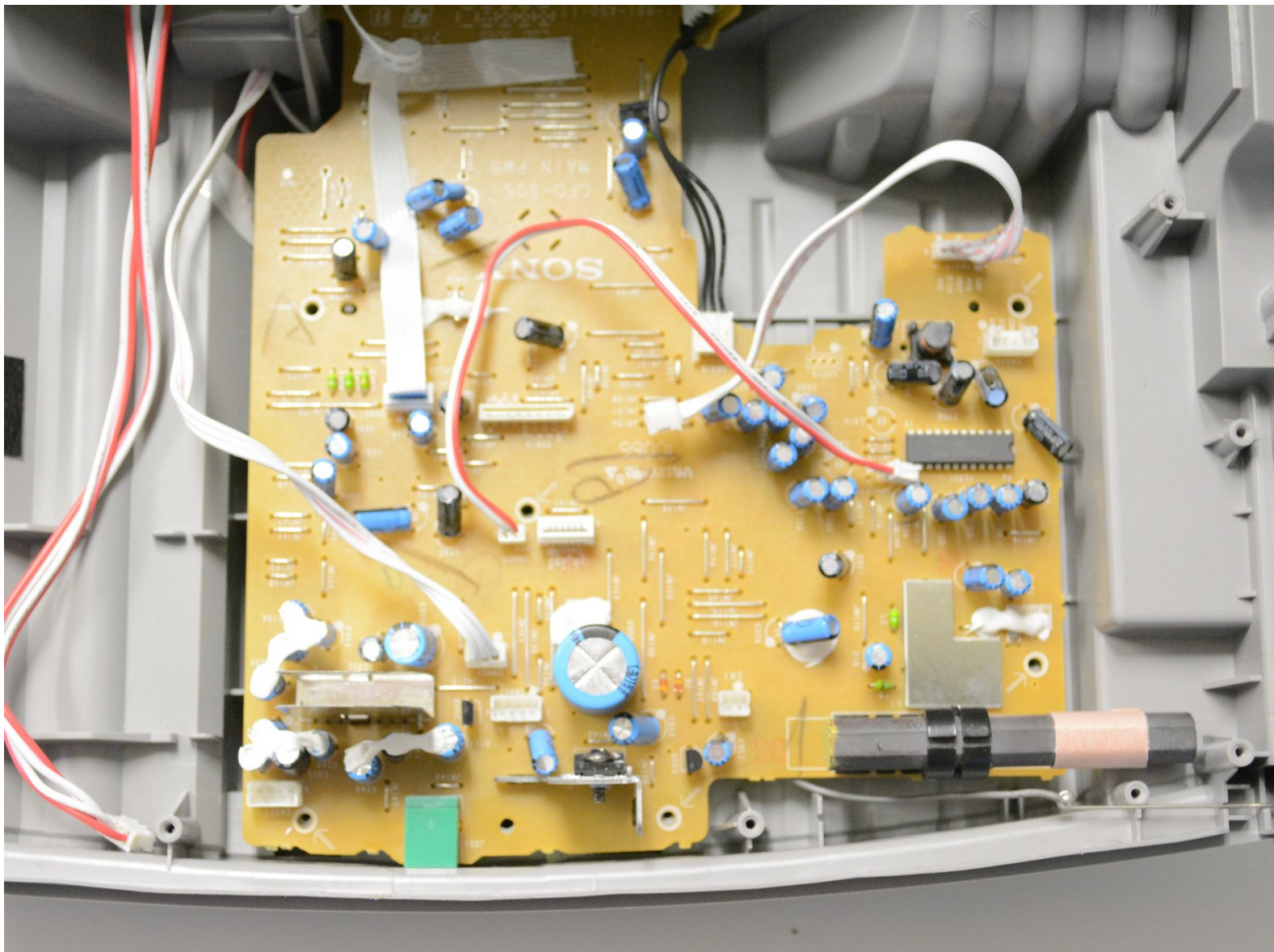


# Sony Radio CD player and cassette player

## CFD-S05 Circuit Board Replacement

How to replace the circuit board to the radio.

Written By: Ian Nussman

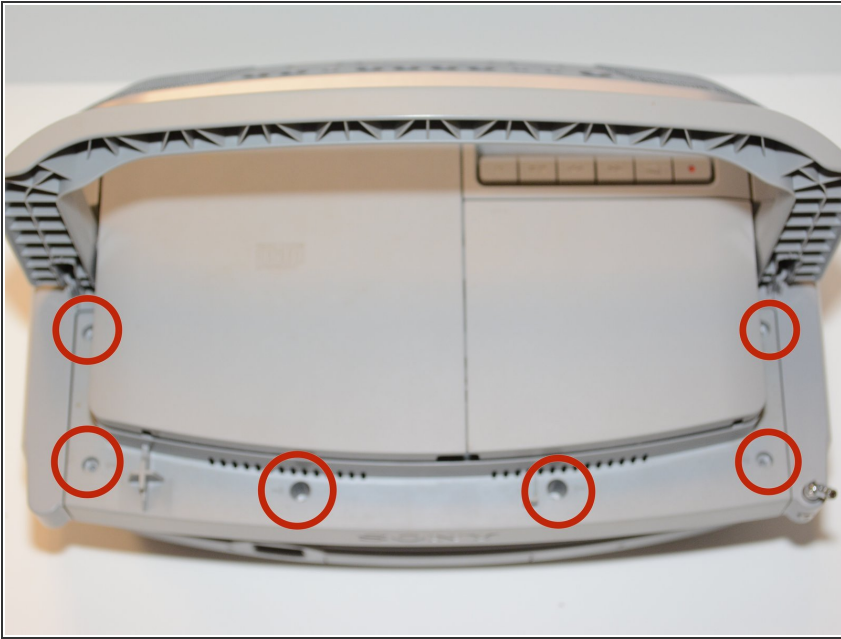




## PARTS:

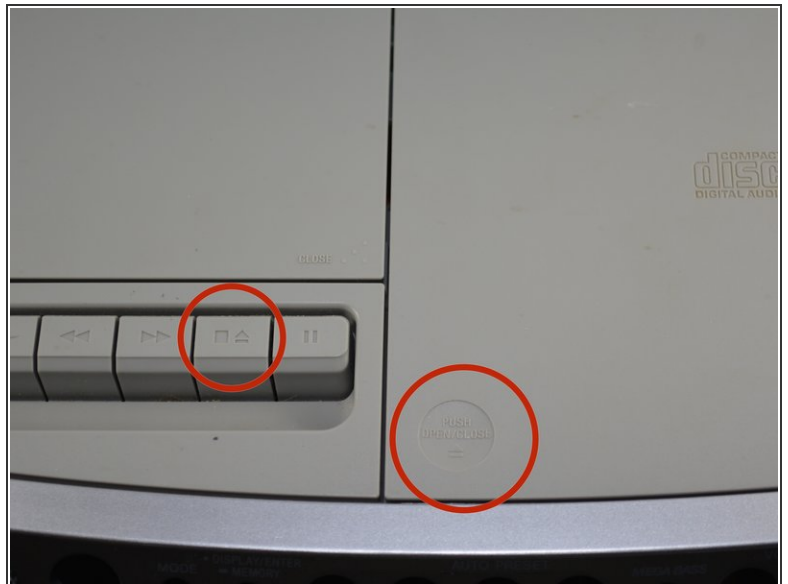
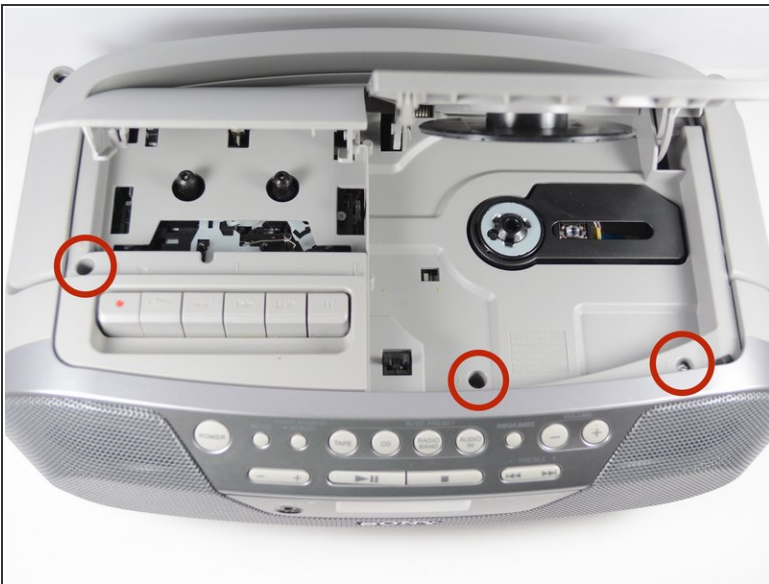
- [Circuit Board](#) (1)
-

## Step 1 — Sony Radio Model CFD S05 Prerequisite steps Replacement



- Unscrew the screws on the top of the radio.

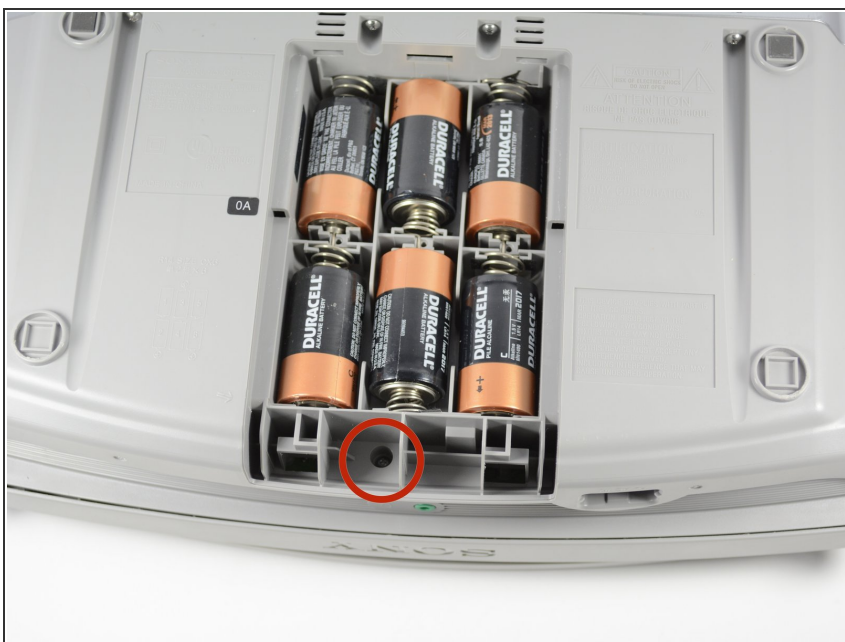
## Step 2



- Open the CD and cassette doors and remove the screws in the compartments.
- To open the CD door push on the bottom left corner of the CD door. To open the cassette door push the button that is to the left of the pause button.



### Step 3



- Flip the radio upside down and remove the battery cover. Unscrew the one screw below the batteries.

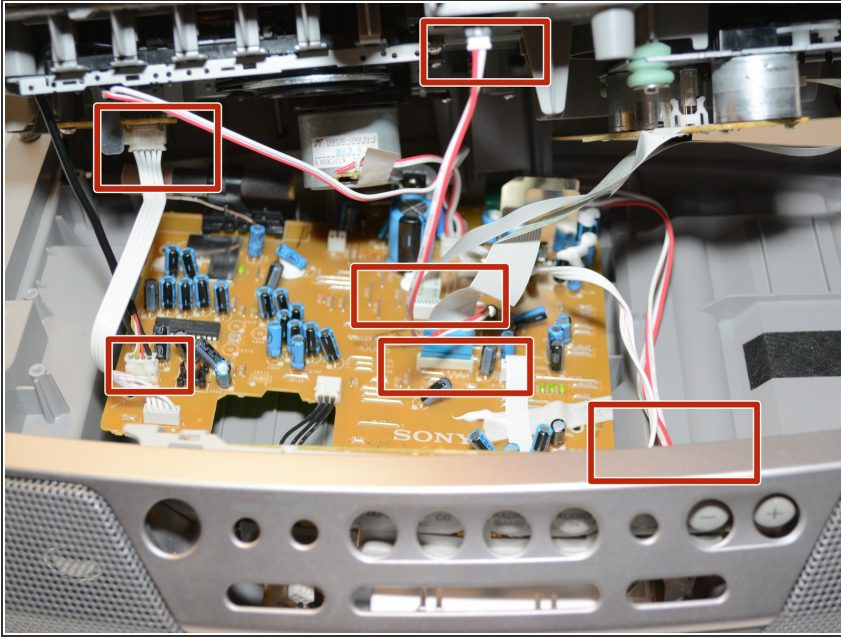
### Step 4



- Remove the top of the radio enough to access the wires for removal.

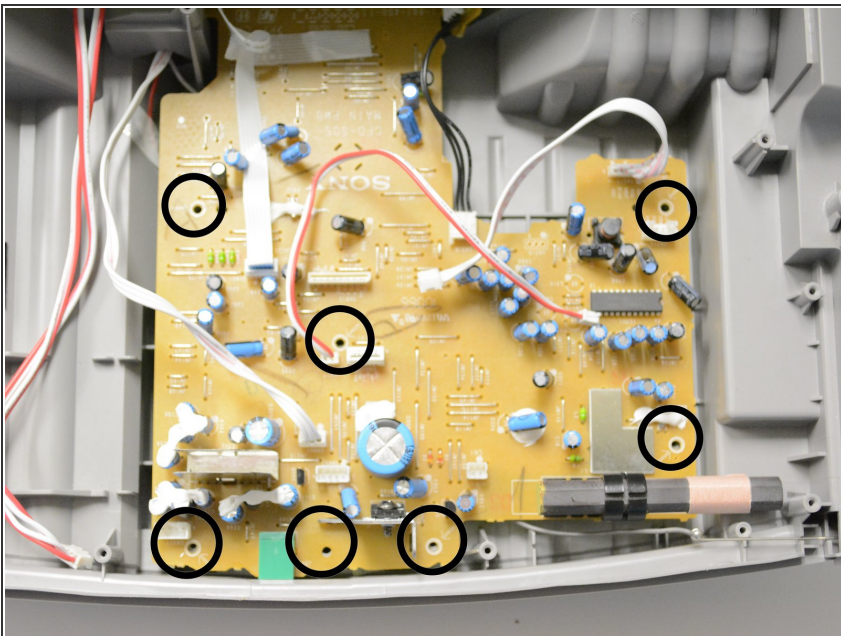
**⚠ Do not forcefully remove the whole top piece of the radio! There will be wires connected to the top cover and circuit board.**

## Step 5



- Remove all of the wires that are connected to both the circuit board and the underside of the top of the radio by pulling them where they are connected
- ⓘ This should include three sets of red and white wires, one set of white wires, one set of black wires, and two ribbon wires. Some cannot be disconnected from the top piece of the radio. Disconnect these plugs from the circuit board.

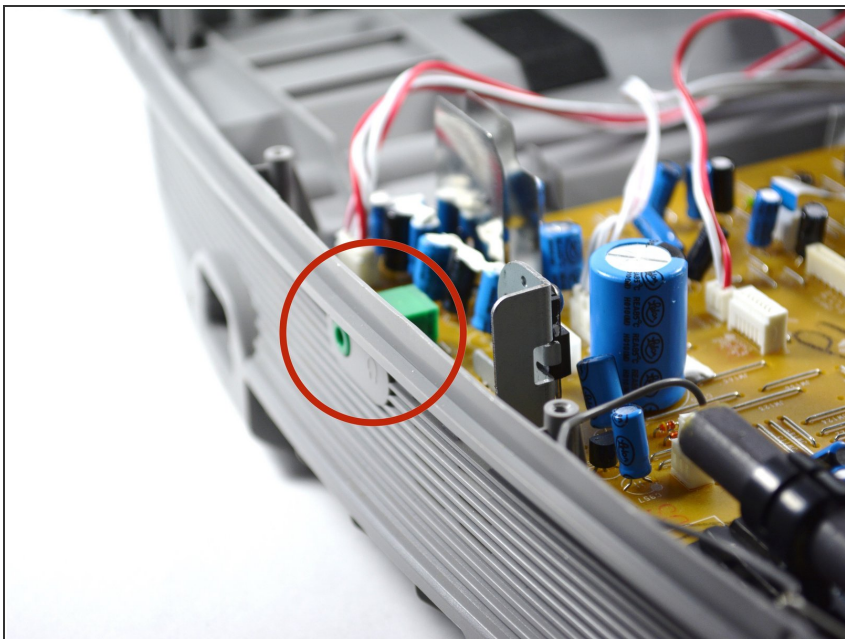
## Step 6 — Circuit Board



- Unscrew the screws in the circuit board.

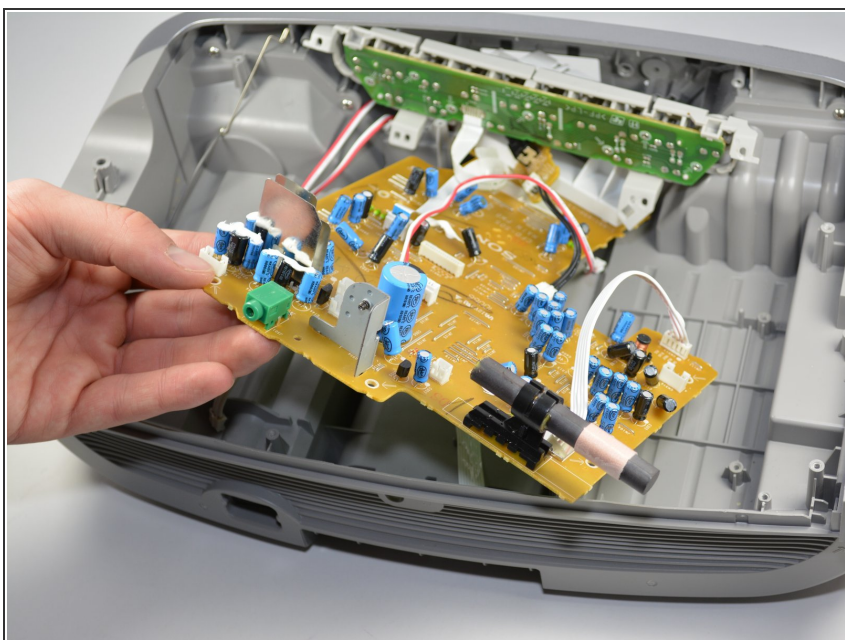


## Step 7



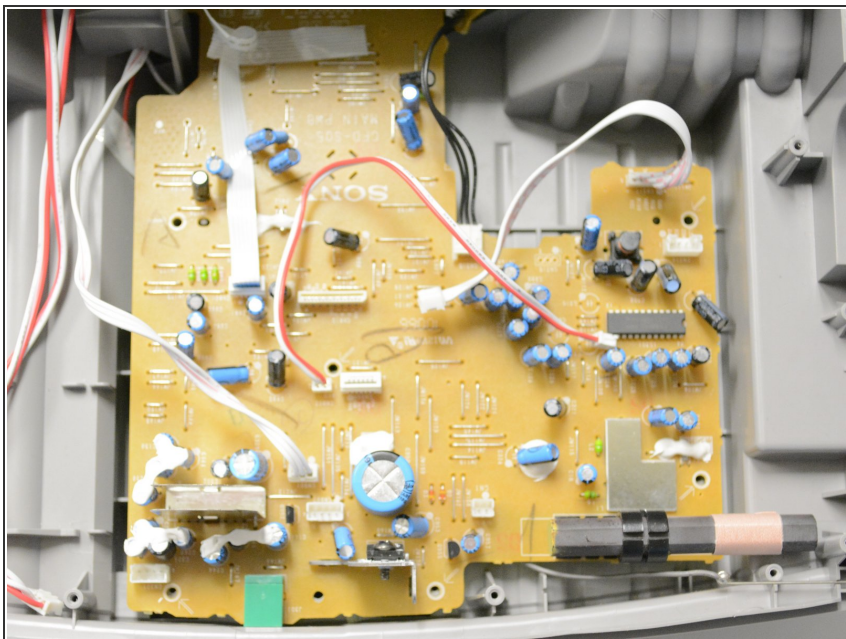
- Unlodge the green headphone jack on the back of the circuit board by pulling on the back of the radio and lifting the circuit board up.
- ⓘ This may be a little difficult and don't pull too hard because the radio may crack.

## Step 8



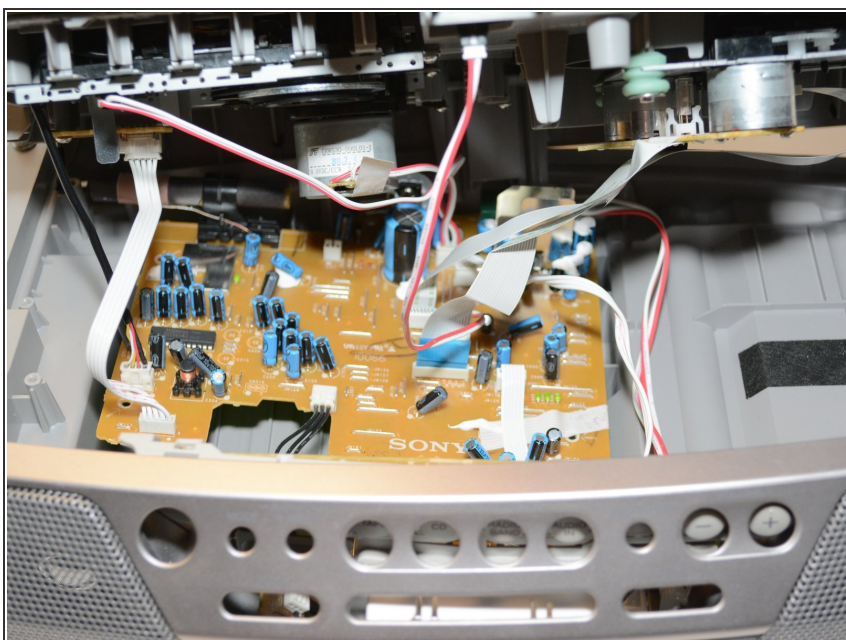
- Lift the circuit board out of the radio.

## Step 9



- Insert and align the new circuit board and screw it down.

## Step 10



- Reconnect the wires that were unplugged from the prerequisite steps.

To reassemble your device, follow these instructions in reverse order.