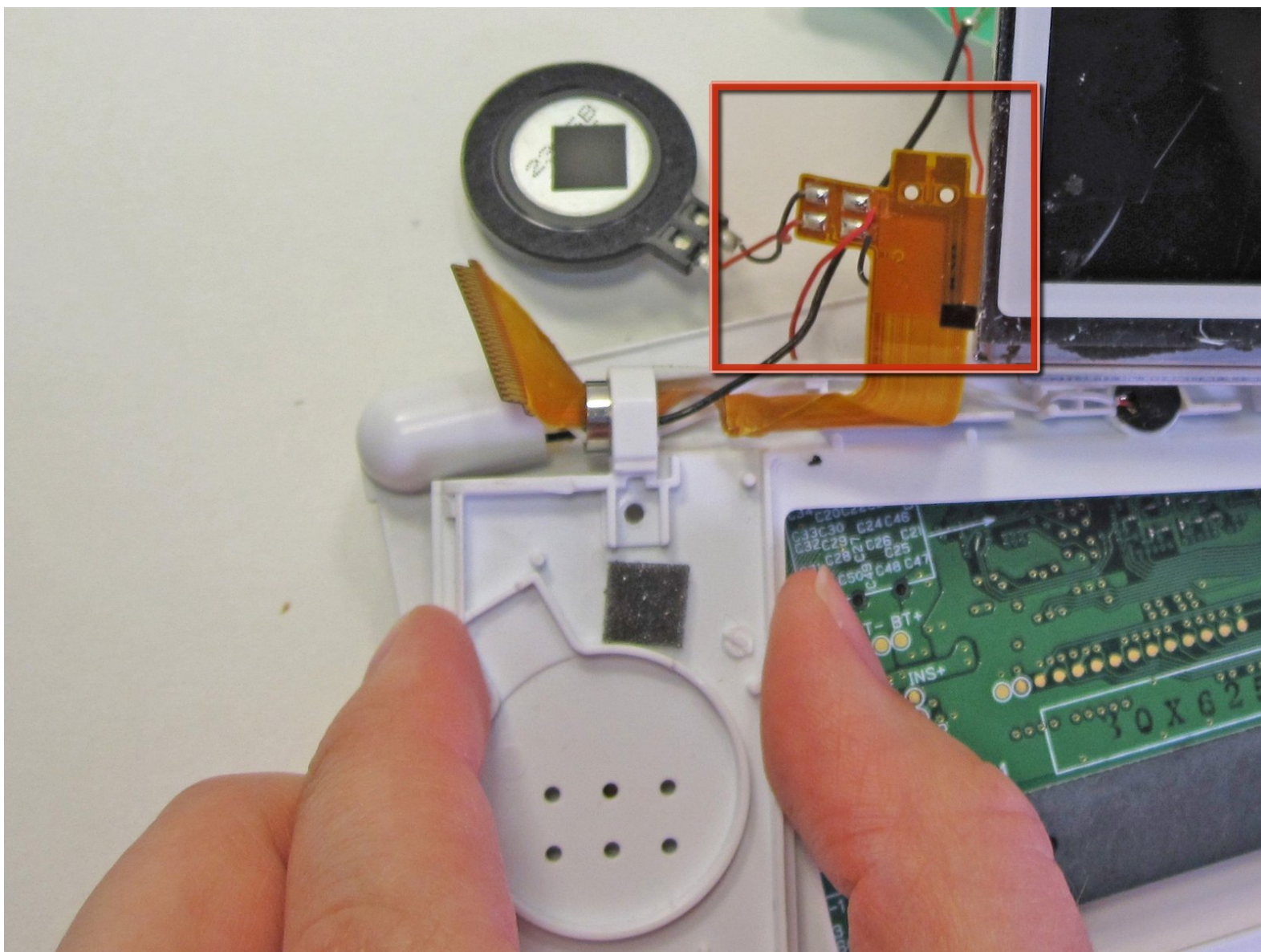




Nintendo DS Lite Speaker Replacement

This guide has been updated by iFixit staff!...

Written By: Brittany K



INTRODUCTION

This guide has been updated by iFixit staff! Read the new, official guide [here](#).

Replacing the Nintendo DS Lite Speakers



TOOLS:

- [Phillips #00 Screwdriver](#) (1)
- [iFixit Opening Tool](#) (1)
- [Push Pin](#) (1)
- [Tweezers](#) (1)



PARTS:

- [New DS Lite Speakers](#) (1)
- [New DS Lite Top screen](#) (1)

Step 1 — Nintendo DS Lite Battery Disconnect



- Place your device upside down and locate the battery compartment.
- Find the Phillips head screw securing the battery cover in the bottom right hand corner of the device.
- ✦ Loosen the screw enough to remove the battery cover but leave the screw in the cover for reassembly.
- ❗ Use only a Phillips screwdriver to remove screw.

Step 2



- Slowly remove the battery cover with the iFixit opening tool.
- ⚠ Make sure to remove the cover carefully to keep from losing Phillips screw in the cover. It will be needed for reassembly.

Step 3



- Use the iFixit opening tool to carefully pry the battery out of the case.
- After the old battery is removed replace it with a new battery facing the same direction as when the cover was opened.
- ① For some devices, you may be able to remove the battery by flipping the DS over and letting the battery fall into your hand.

Step 4 — Disassembling Nintendo DS Lite Bottom Case



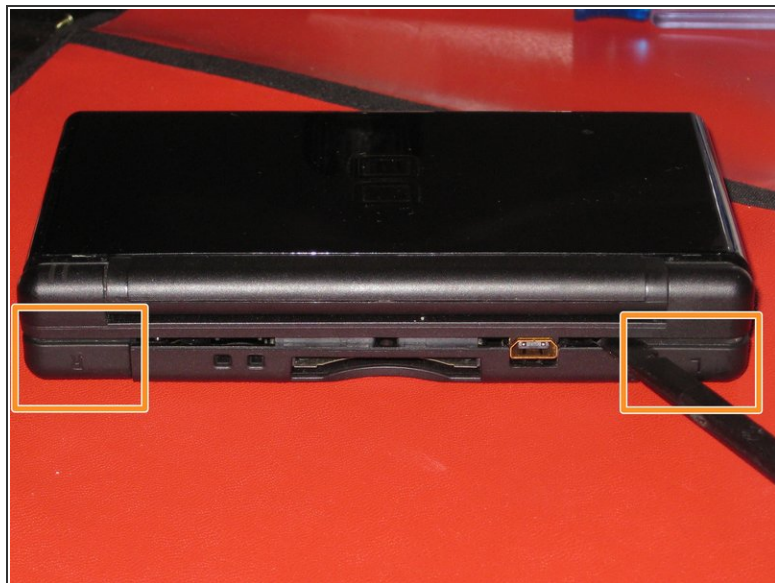
- Remove the following seven screws that secure the lower case to the DS Lite:
 - Three silver tri-wing screws (5mm long)
 - One black tri-wing screw (4mm)
 - Two gold Phillips screws (4mm)
 - One silver Phillips screw (3mm)
- **Do not** remove the silver PH screw (3mm) in the battery compartment yet. It holds the main PCB in place.

Step 5



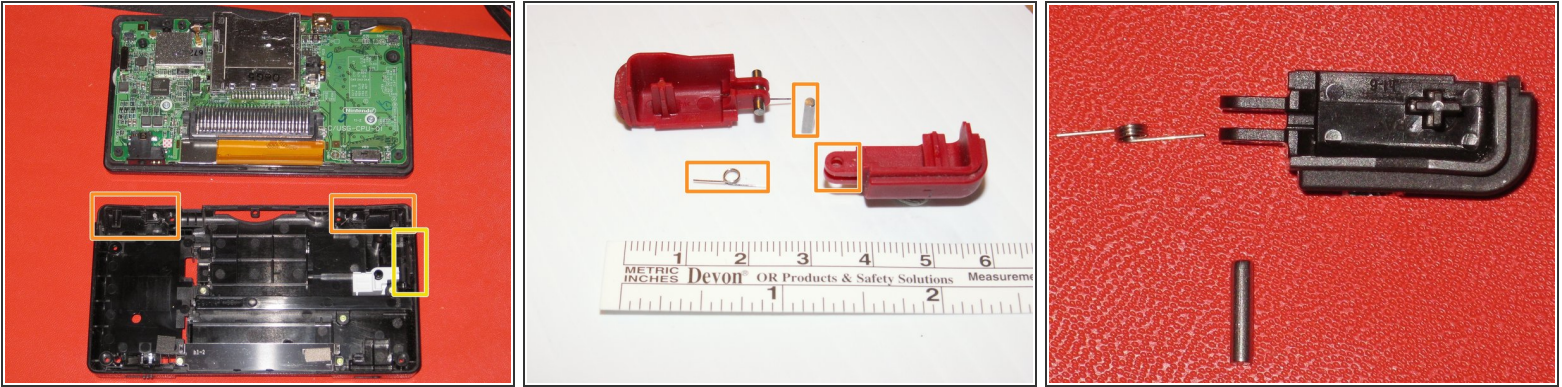
- On the front edge of the Nintendo DS between the headphone jack plug and volume controls remove the plastic insert (or cartridge) from the lower slot (Slot 2).

Step 6



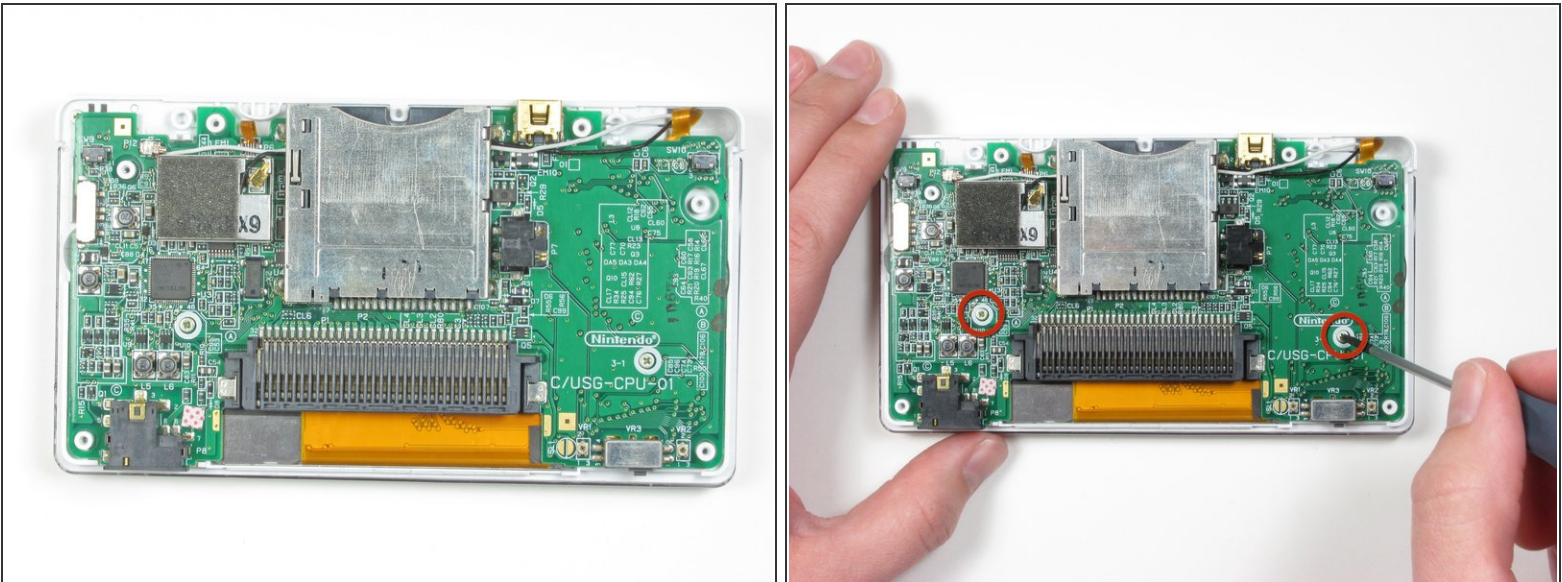
- Flip the unit over so that it is facing right-side up.
- Use a spudger to pry open the gap between the bottom case and the front panel. Work all the way around the case until the panel is free.
- Avoid touching the L and R shoulder buttons, because they easily detach and are difficult to reassemble. Keep the bottom case flat against your workbench to help hold the shoulder buttons in place.

Step 7



- Carefully separate the two pieces by hand.
- The two shoulder buttons are made up of three pieces -- the plastic button, a pin, and a spring. If they accidentally pop out while you are working, study the picture and make sure you put the spring in the correct position.
- ☑ When reassembling the cover, make sure that the power switch caver on the bottom case is in the off (down) position to avoid breakage.

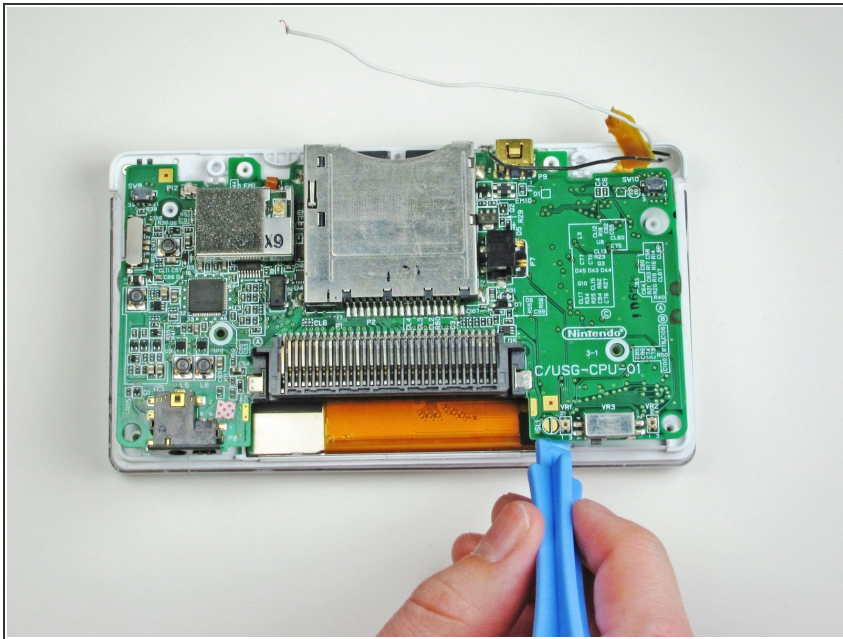
Step 8 — Motherboard



- Locate the two screws that attach the logic board to the device.
- Unscrew the two Phillips head screws.

This document was generated on 2023-01-04 07:57:45 AM (MST).

Step 9

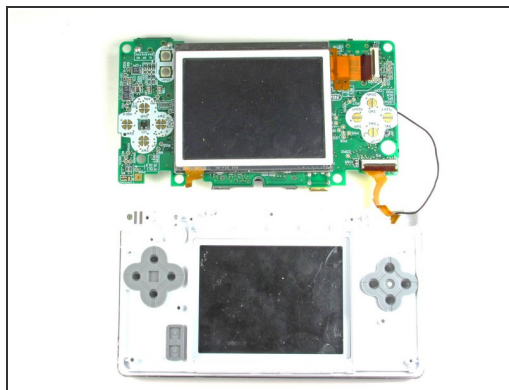
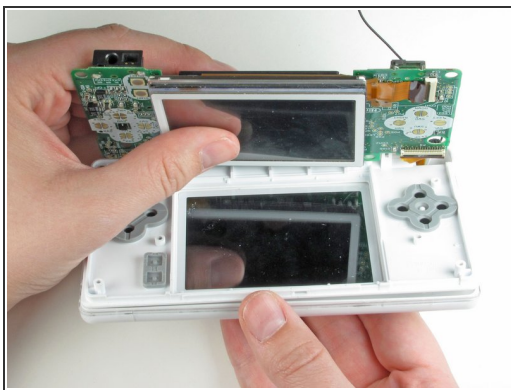


- With a plastic opening tool, gently separate the logic board from the device base.

⚠ The ribbon cable and two wires are still connected to the logic board.

ⓘ The buttons may fall out, but can easily be put back in place.

Step 10



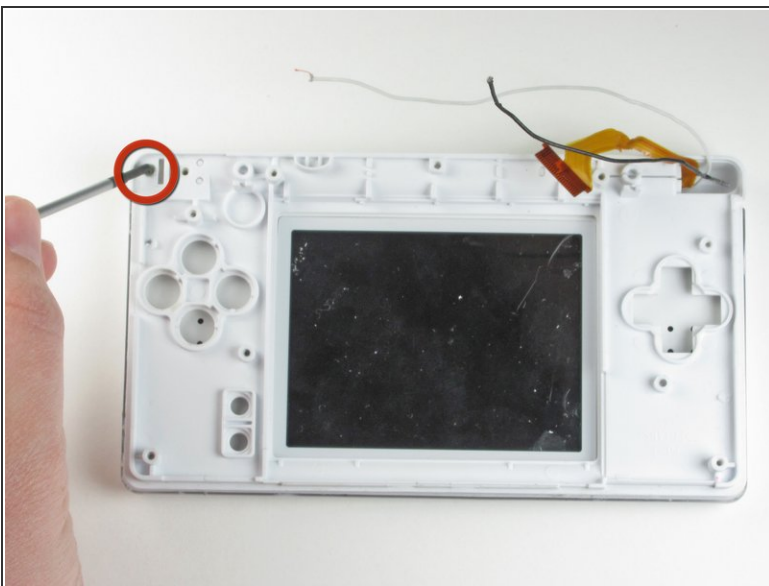
- Flip the logic board over so that the touch screen is facing up.
- Using metal tweezers, carefully disconnect the other ribbon cable that connects the touch screen with the logic board.

Step 11



- Using one finger nail or the plastic opening tool, carefully lift the brown securing flap of the connector. Then disconnect the ribbon cable that connects the logic board to the upper screen.

Step 12 — Top Screen



- Remove the two Phillips-head screws that hold the hinge in place.
- Open the system up (just like if you were about to use it normally).

Step 13



- After opening it, carefully unhinge them from each other by sliding the bottom piece to the left and the top piece to the right.

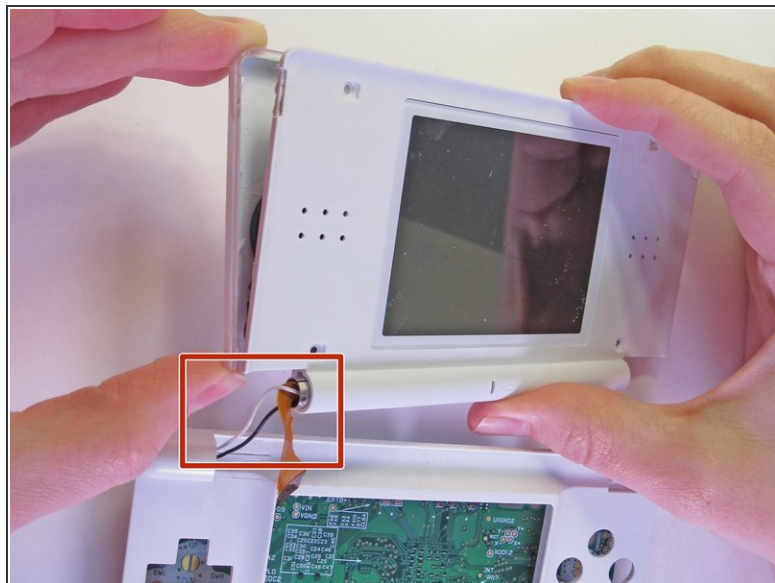
⚠ Be aware that you can pinch wires while doing this, so don't yank it apart.

Step 14



- Using a push pin, remove the four rubber bumpers located at the corners of the top screen.
- After removing the LEDs and pulling apart the hinge, remove the round hinge shaft. This should be in the top screen piece.

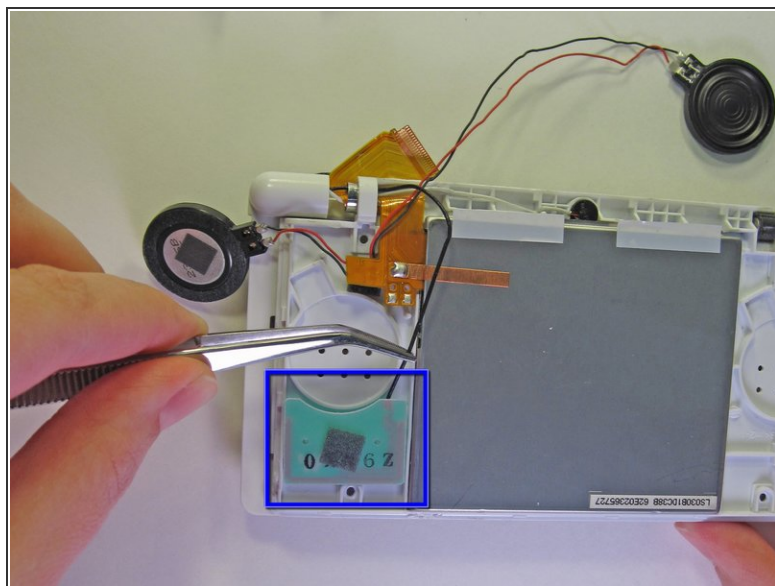
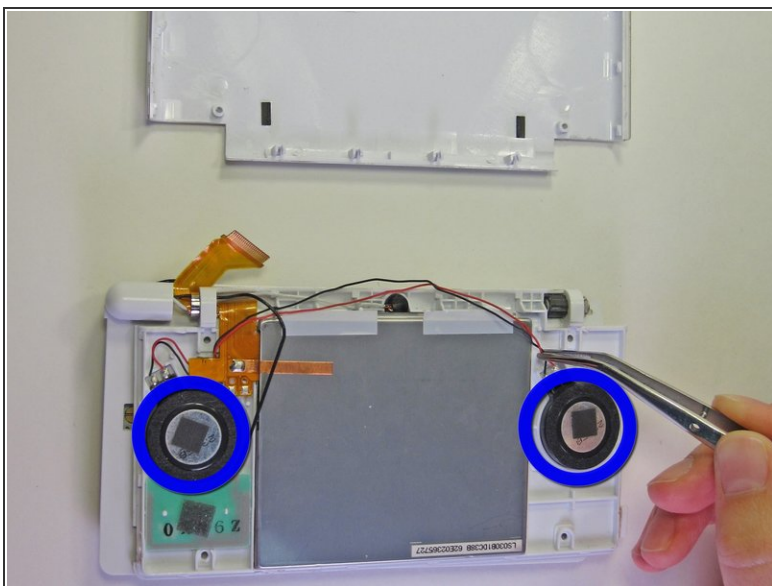
Step 15



- Unscrew the four Phillips-head screws and remove the top panel.

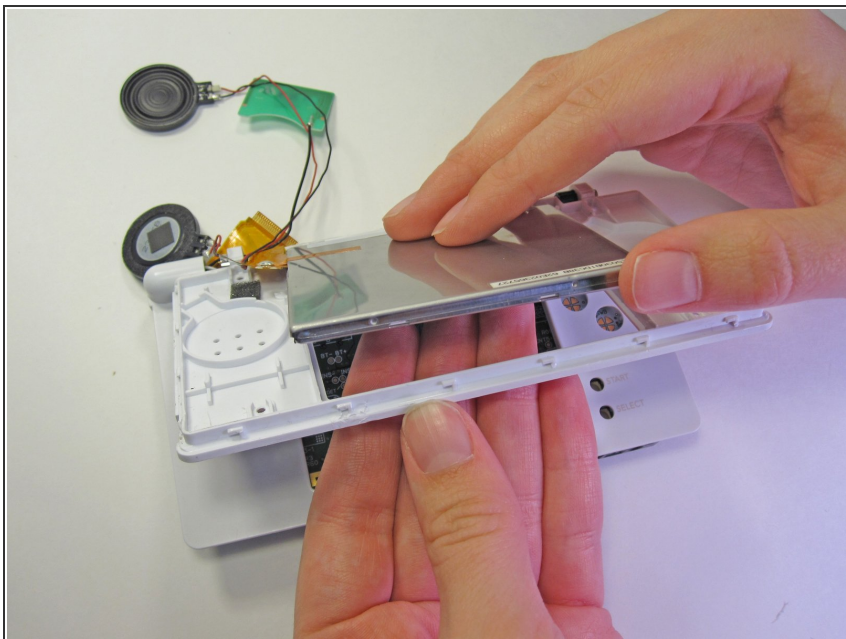
⚠ Be careful not to damage the wires and the ribbon cable.

Step 16



- Carefully remove the two speakers and the green wireless card from the top panel.

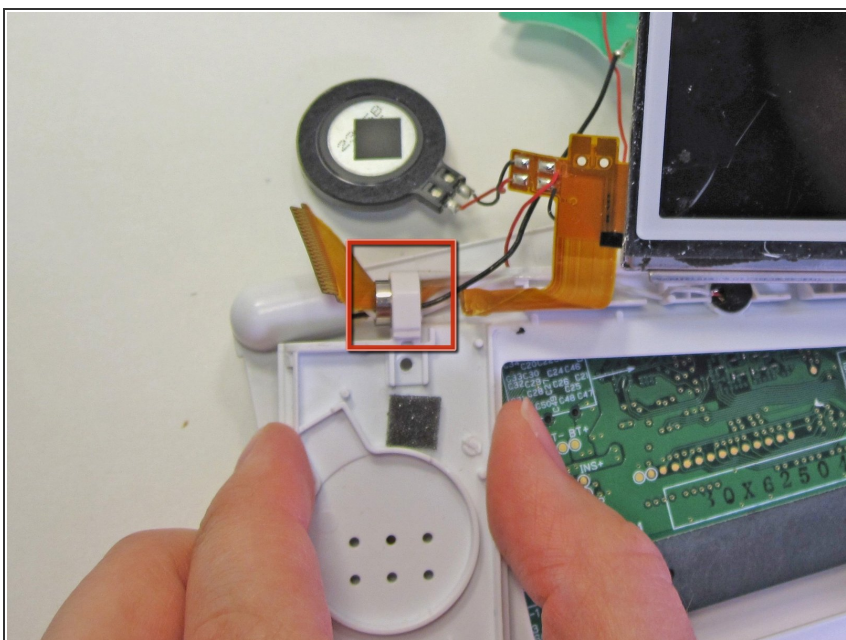
Step 17



- Remove the screen by orienting it face down and pushing up on the screen from underneath.

⚠ Don't press on the screen too hard, or you may crack the screen.

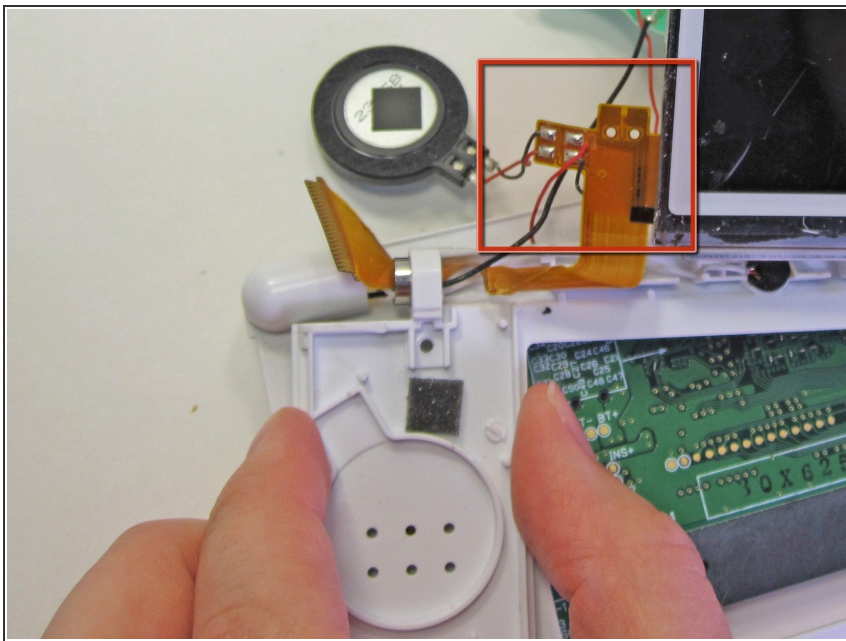
Step 18



- Carefully slide the ribbon cable through the clip.

⚠ Be careful not to damage the ribbon cable by pulling too hard or creasing it.

Step 19 — Speakers



- The speakers are soldered to the top screen flex assembly. You may desolder a broken speaker and solder a working speaker on, or you may replace the speakers together with the display assembly.

To reassemble your device, follow these instructions in reverse order.