



LG LX160 Front Casing Replacement

Written By: Kris Oznovic



INTRODUCTION

This guide will help you replace the front casing on the phone.



TOOLS:

- [Phillips #00 Screwdriver](#) (1)
 - [Spudger](#) (1)
-

Step 1 — Battery



- Place the phone on a flat surface with the back facing upward.
- Remove the back panel by placing your thumb on the LG logo and sliding the panel in a downward motion until the panel is removed.

Step 2



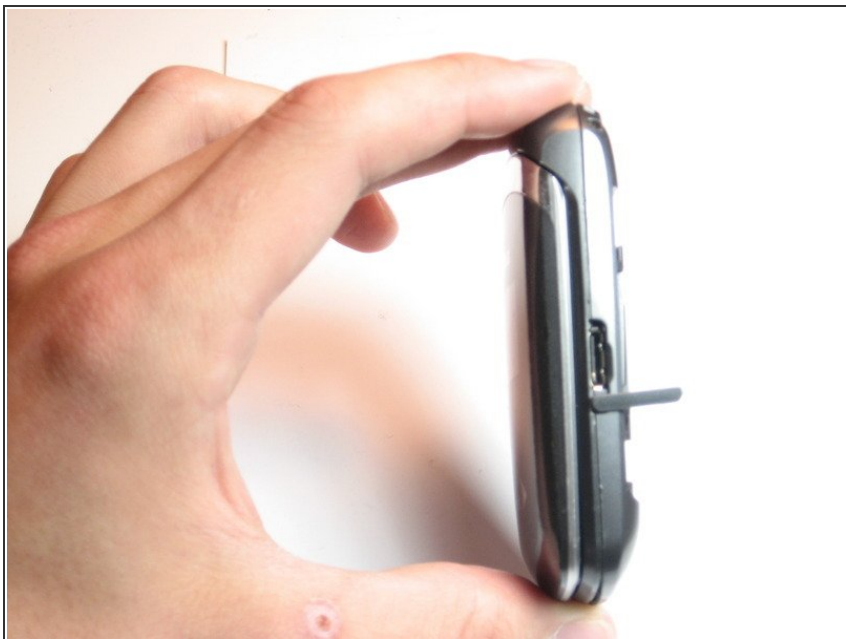
- Once the panel is removed, you will see the battery. Remove the battery by sliding your finger into the notch where the LG logo was on the panel and lift the battery.

Step 3



- Remove the battery completely from the phone and place the battery off to the side.

Step 4 — Back Casing



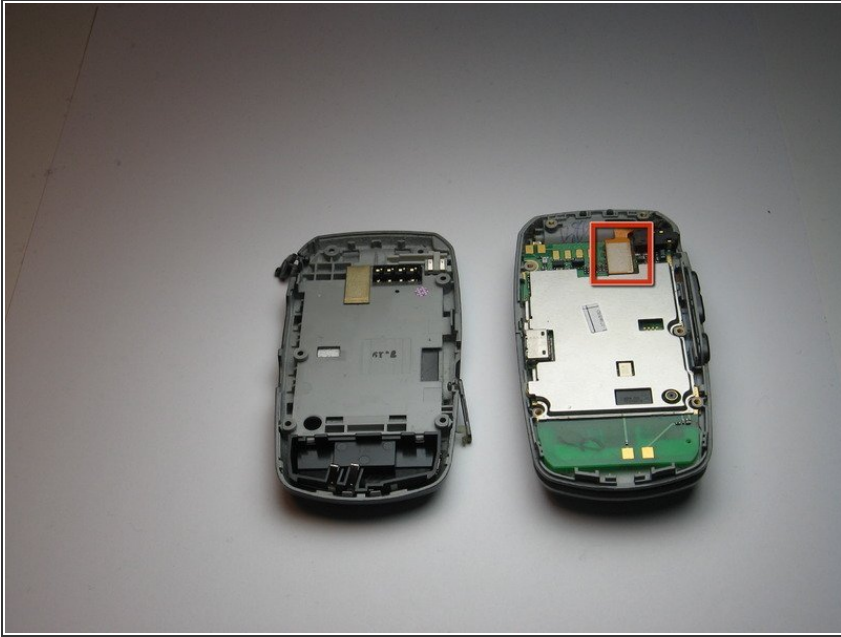
- Now that the battery has been completely removed, hold the phone upright.
- Pull off all rubber tabs covering the headphone jack and the power input port. Do this before continuing the next steps.

Step 5



- Flip the phone with the backside facing up.
- Using the Phillips #00 Screwdriver, unscrew the 6 screws that hold the back casing together.

Step 6



- Located at the top of the logic board there is a small rectangle with a white pad on it, use your tweezers and gently grip the neck of the orange wire.
- Pull up gently on the orange wire until it comes loose. Do not be concerned with gentleness, it may require some force.

Step 7 — Front Casing



- Open your phone to find four small rubber pads at each corner of the screen.
- Remove each rubber piece and unscrew the screw under the rubber piece. You can see what the screw looks like under the rubber piece in the top right screw.

Step 8



- Use a splurger to slide in between the phone and the cover.

Step 9



- The cover will be separated from the phone and may be removed.

To reassemble your device, follow these instructions in reverse order.