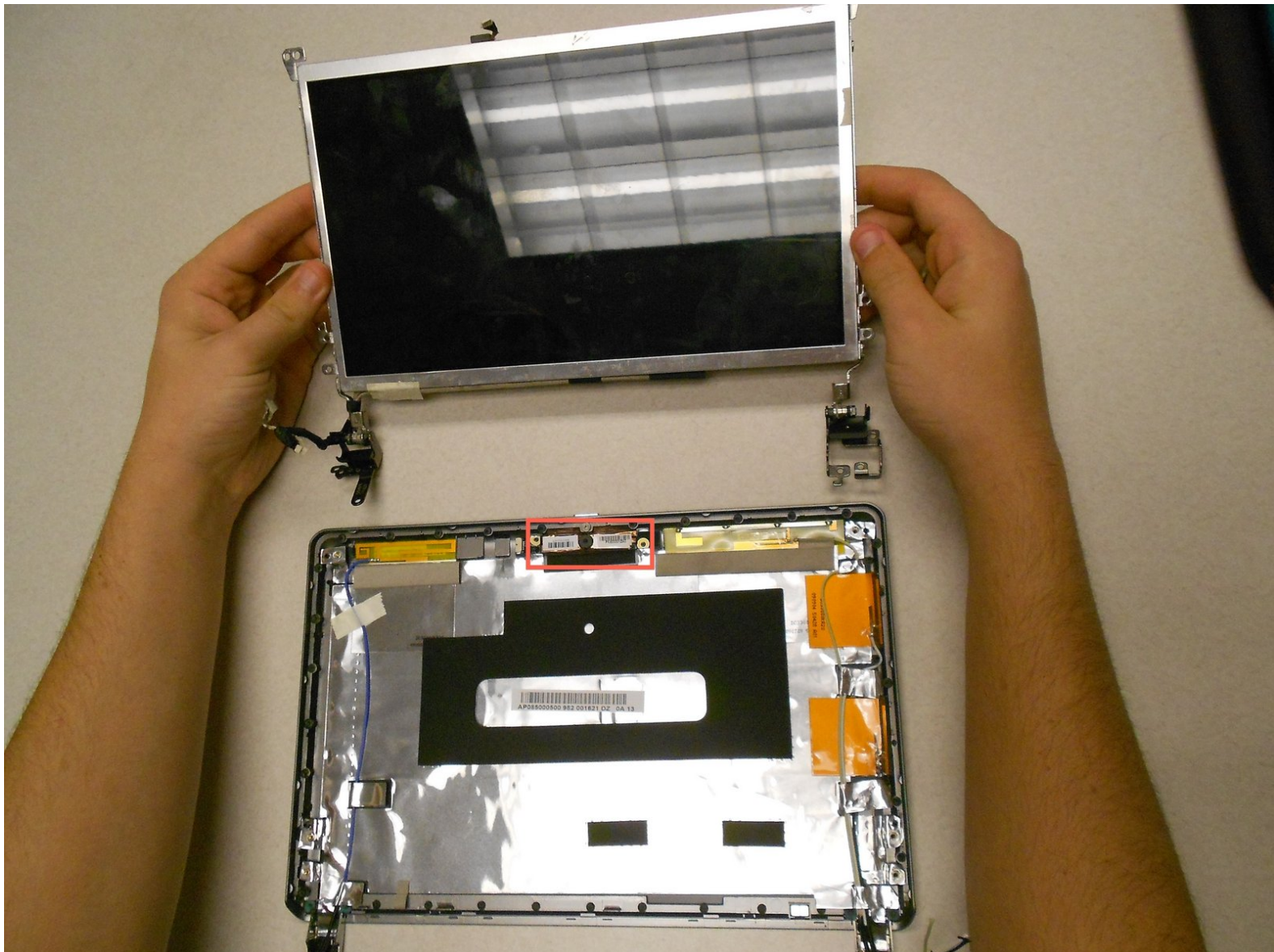




Gateway KAV60 LT2016U Webcam Replacement

Gateway KAV60 LT2016U webcam replacement.

Written By: Lydia Benjock



INTRODUCTION

Once you've opened up the netbook to reach the monitor, the webcam can be easily replaced.



TOOLS:

- [Phillips #0 Screwdriver](#) (1)
 - [iFixit Opening Tools](#) (1)
-

Step 1 — Battery



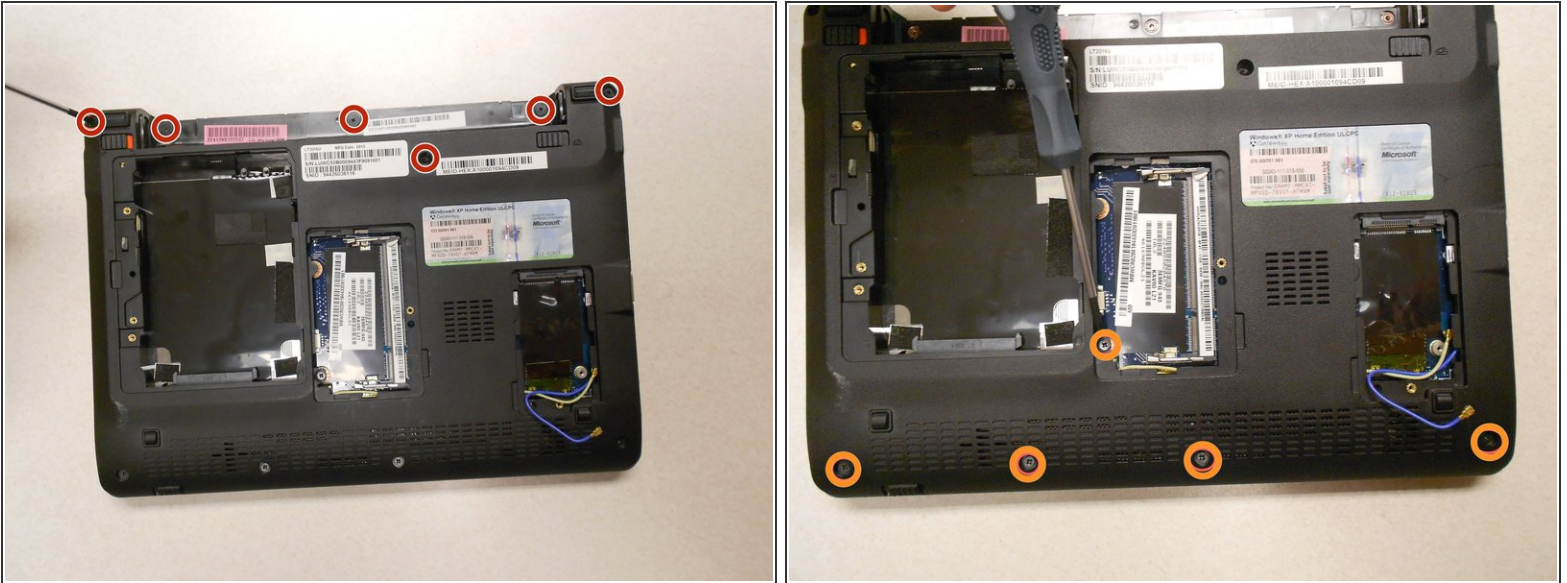
- Unlock the tab located in the top left corner of the netbook.
 - The red tab indicated that the battery has been properly unlocked.
 - Remove the battery.
- i** When working with electronics, it is always wise to remove the power source before taking the device apart.

Step 2 — Upper Cover



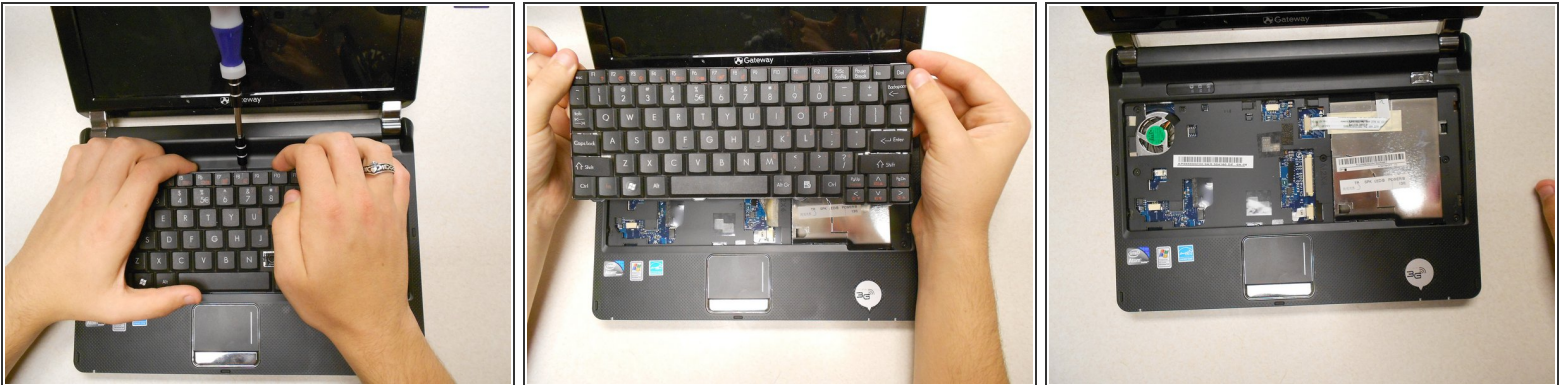
- !** Make sure the RAM, hard drive, and WiFi card have been removed from the computer before trying to take off the cover so they are not damaged in the process.


Step 3



- Remove six (6) 5mm screws, two (2) 17.5mm screws, and three (3) 2.5mm screws from the back, using the Phillips #0 screwdriver, as marked here.

Step 4



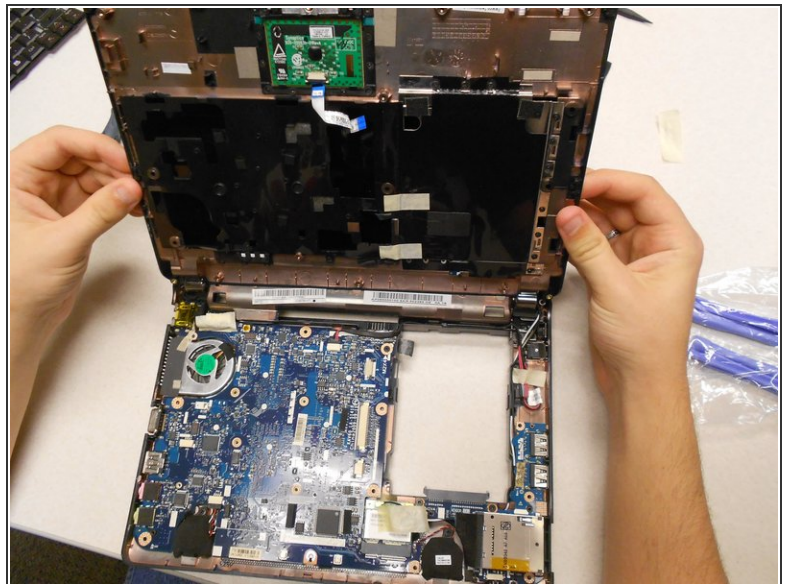
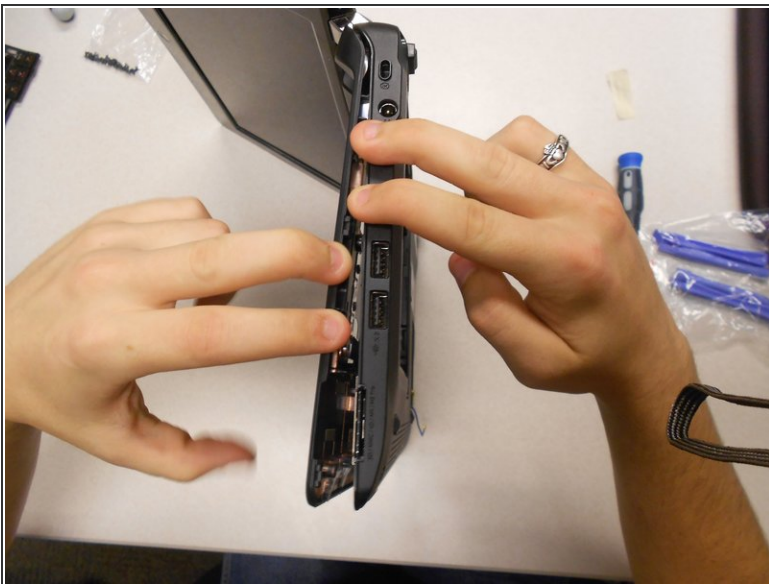
- Pry up the keyboard using a spudger or plastic opening tool in the exact location shown in the photograph.
 Don't use a screwdriver as a pry tool as shown in this example.
- Carefully disconnect the keyboard ribbon cable from the motherboard, and remove the keyboard.

Step 5



- Remove the five (5) 5mm screws shown here using the Phillips #0 screwdriver.

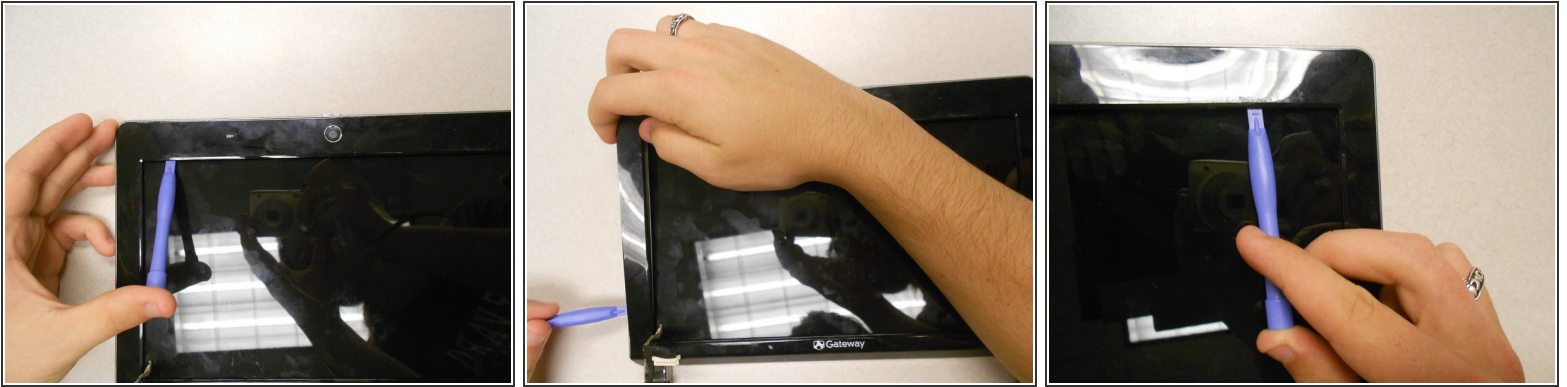
Step 6



- Separate the upper cover from the back cover. It is possible to do this without a tool, but you may also use a plastic opening tool for added leverage.
- Be careful to keep even pressure all the way around the cover so that it is not bent beyond repair.
- Carefully disconnect two ribbon cables to complete the separation of the upper cover.

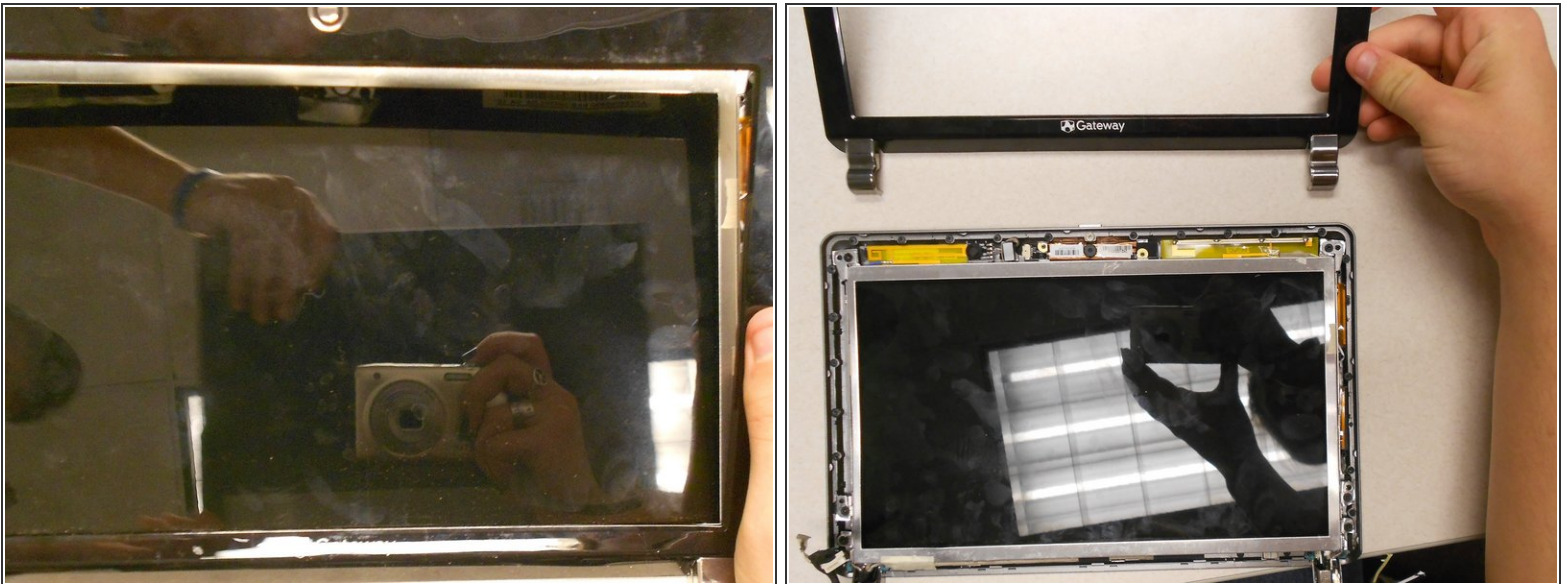
This document was generated on 2020-11-28 03:05:42 AM (MST).

Step 7 — LCD



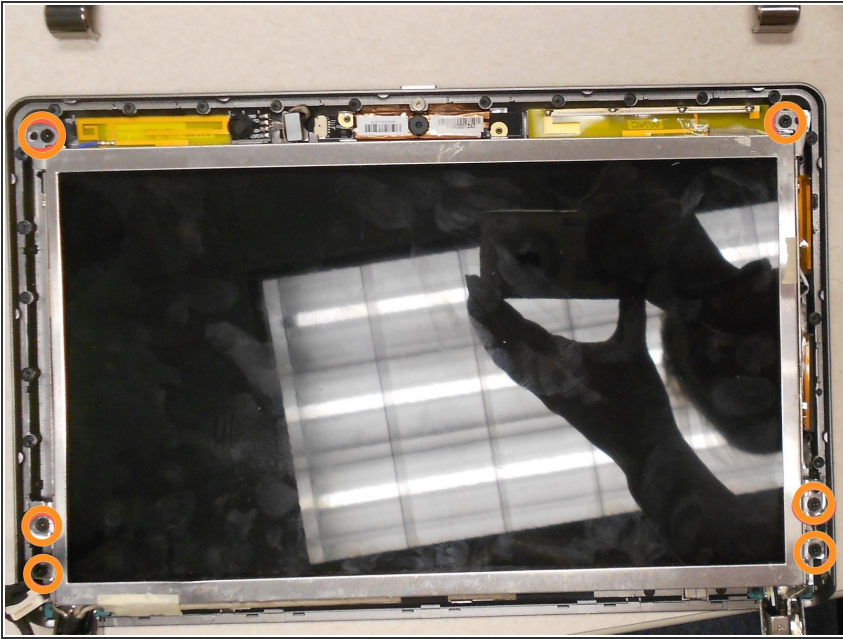
- Pry the border around the monitor off of the top cover using a plastic opening tool, as shown.
- Be careful not to damage the computer screen in the process

Step 8



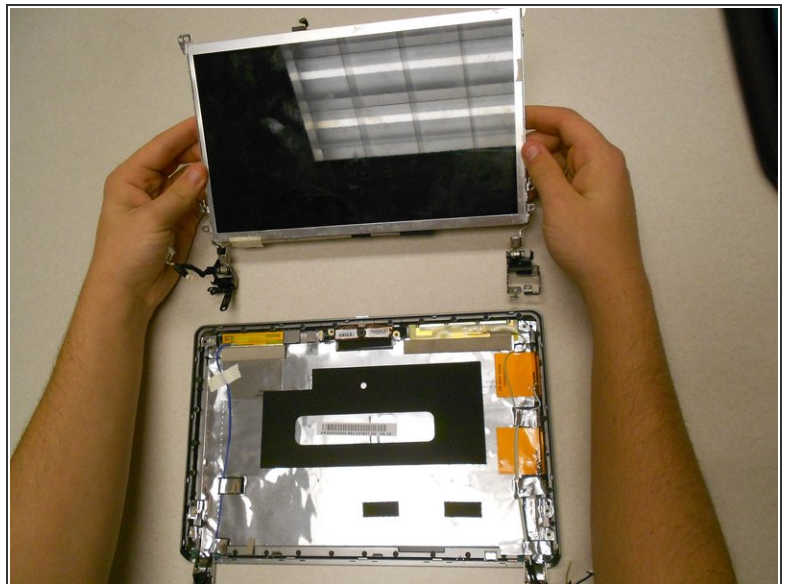
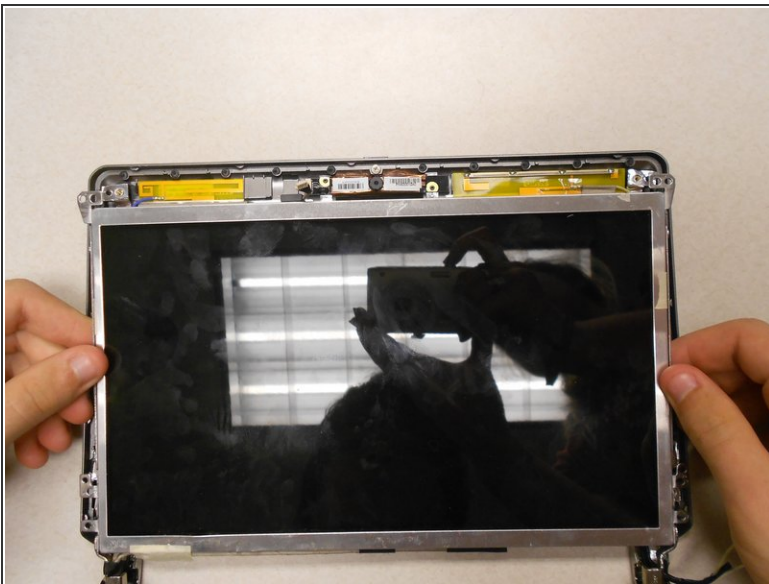
- Separate the monitor from the border cover once all snap connections have been pried apart.

Step 9



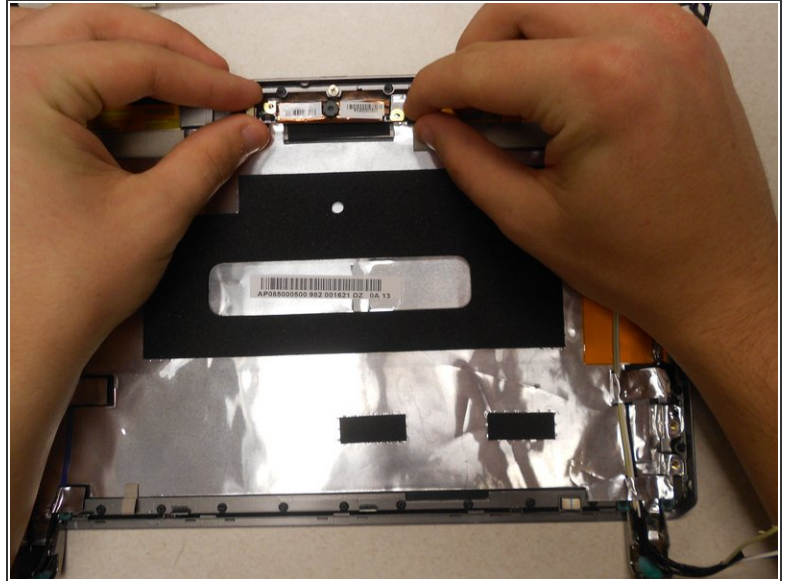
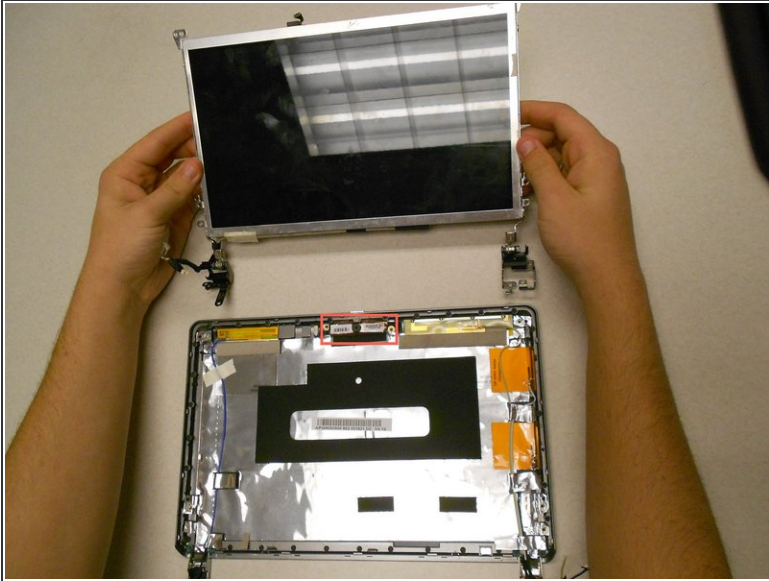
- Remove the six (6) 5mm screws shown here using the Phillips #0 screwdriver.

Step 10



- Take the screen out of the top cover.

Step 11 — Webcam



- The webcam is located here, as shown.
- Disconnect the webcam from the wires attaching it to the computer.
- Lift the webcam away from the top cover.

To reassemble your device, follow these instructions in reverse order.