



# LG CF360 Motherboard Replacement

Replacing the motherboard on the LG CF360 will bring all of its components back together.

Written By: Aaron



## INTRODUCTION

This guide will teach you how to replace the motherboard on the LG CF360. Completing this task will allow you to replace the number pad, SIM card port, power connector, LCD connector, and camera all in one.



### TOOLS:

- [Phillips #000 Screwdriver](#) (1)
  - [iFixit Opening Tools](#) (1)
  - [Tweezers](#) (1)
-

## Step 1 — Battery



- On the back of the phone, place your thumb on the three raised bumps and slide the back cover upward.

## Step 2



- Lift and remove the battery.



### Step 3 — Back Cover



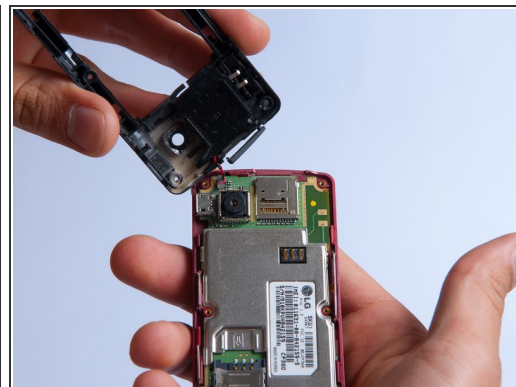
- Remove the two screw covers at the top of phone with tweezers.

### Step 4



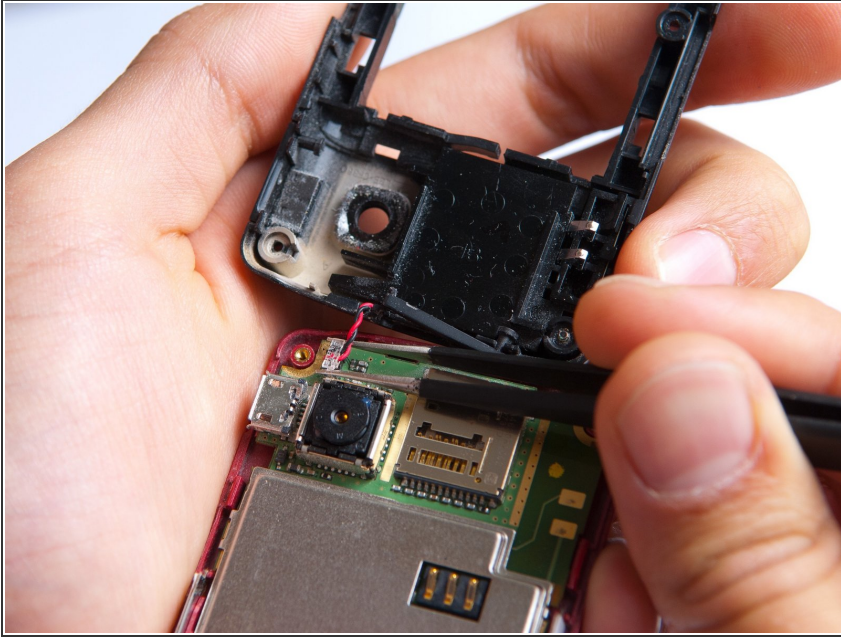
- Remove the six Phillips #000 (3mm) screws.

## Step 5



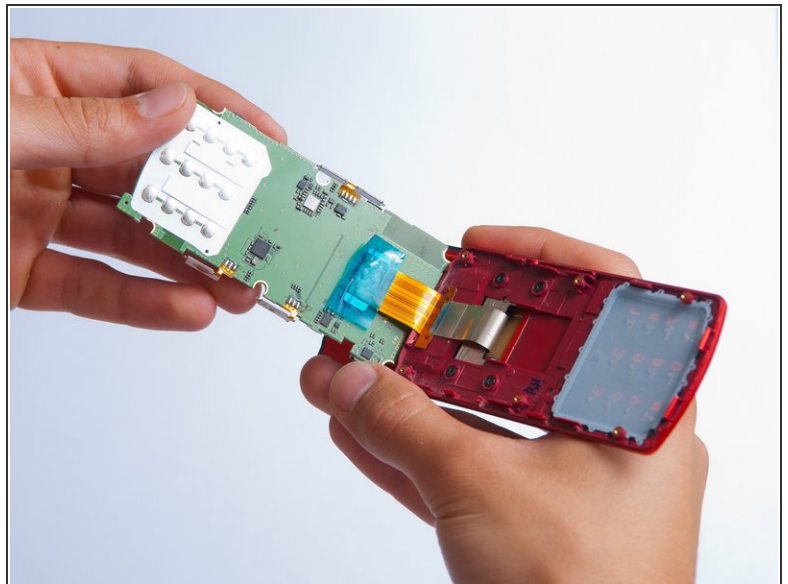
- Use the plastic opening tool to pry the back cover off. Insert the tool between the back cover and red mid section and go around the entire phone.
- ⓘ The plastic side buttons fall out when you take the back cover off.
- ⓘ The back cover is connected to the speaker by red and black wires.

## Step 6



- Use the tweezers to remove the red and black wires connecting the speaker to the green motherboard by pinching the sides of the plastic base near the motherboard.
- Set the back cover with the speaker aside.

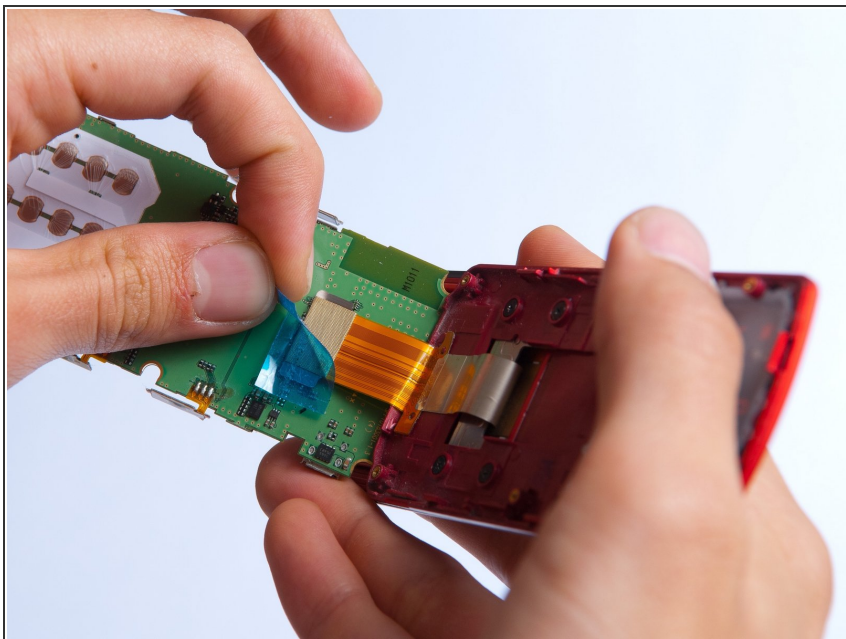
## Step 7 — Motherboard



- Use the plastic opening tool to gently lift the snapped-in motherboard from the front panel.
- ⓘ An orange ribbon from the LCD is connected to the underside of the motherboard, so do not force the motherboard from the rest of the phone yet.

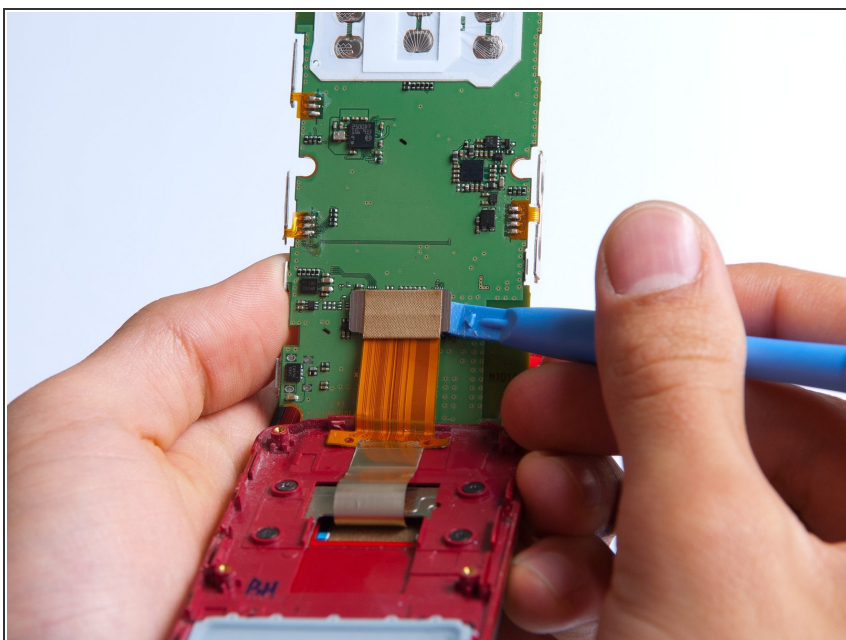


## Step 8



- Gently remove the blue transparent tape from the connector.

## Step 9



- With the plastic opening tool, gently pry the LCD connector from the motherboard.
- Set the motherboard aside.

To reassemble your device, follow these instructions in reverse order.