



LG CU515 SKU 64743 Device SIM Card Replacement

If the SIM card is no longer working properly, use this guide to learn how to replace it.

Written By: Josh Davis



INTRODUCTION

This guide teaches a user how to remove the SIM card of the LG CU515 SKU 64743 device. The steps outlined here should be fairly simple to follow. This step is not required to take apart the device; however, it is important not to damage the SIM card and the user should consider doing this step before continuing to take apart the device.



TOOLS:

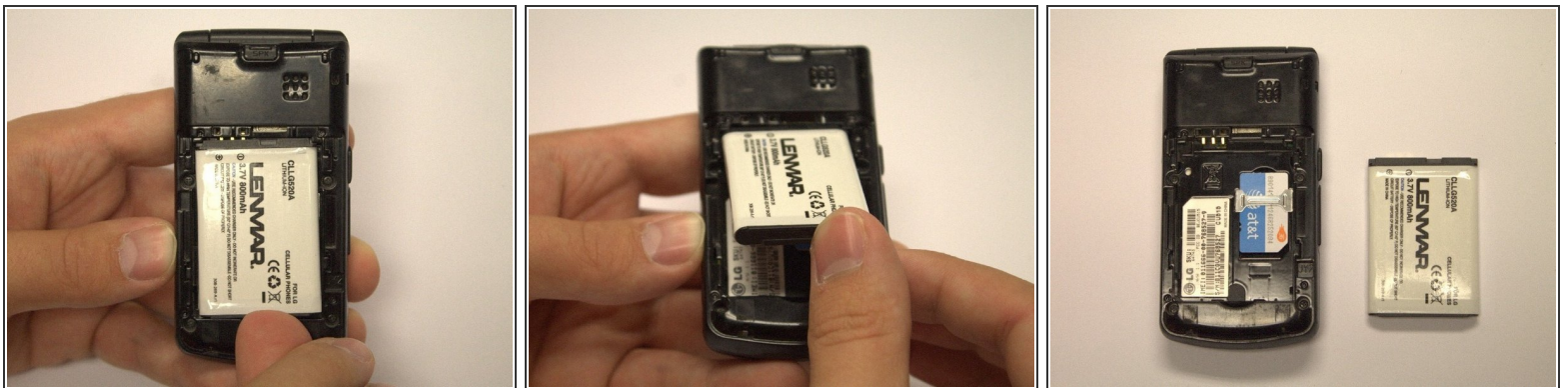
- [No tools needed.](#) (1)
-

Step 1 — Back Cover



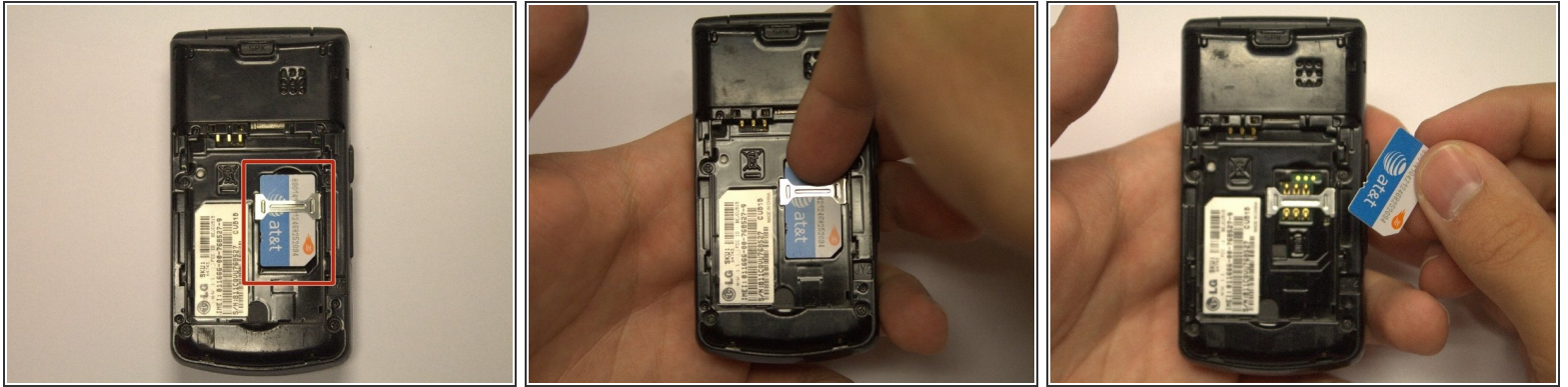
- Locate the raised tab at the top of the back cover.
- Holding the phone in one hand and using your thumb on your other hand, push down on the tab until the cover detaches from the phone.
- Slide the cover down until it is completely removed from the phone.

Step 2 — Battery



- Holding the phone in one hand and using your index finger on your other hand, remove the battery from the phone by prying it out at indentation located at the bottom of the phone.

Step 3 — SIM Card



- Holding the phone in one hand and using your thumb on your other hand, push the SIM card towards the bottom of the phone and out from under the metal retaining clip holding it in place. It should slide out relatively easy.

To reassemble your device, follow these instructions in reverse order.