



# Blackberry Curve 9300 Screen Replacement

This guide was written to aid with Blackberry...

Written By: Alek Squires



# INTRODUCTION

This guide was written to aid with Blackberry Curve screen replacement. Following the steps below should provide relatively simple means of achieving this goal.

---

## TOOLS:

[iFixit Opening Tool](#) (1)

[T6 Torx Screwdriver](#) (1)

[Tweezers](#) (1)

---

## Step 1 — Battery



- Place your Blackberry face down in front of you.

## Step 2



- Locate the indent on the bottom of the back cover.
- Use your fingernail to lift and remove the back cover.

## Step 3



- From the top, use your fingernail to lift and remove the battery.

## Step 4 — Keyboard



- Use the T6 Torx screwdriver to unscrew the two 5mm screws highlighted.

## Step 5



- Place the phone face up and use [tweezers](#) to securely grip and lift the screen upwards.

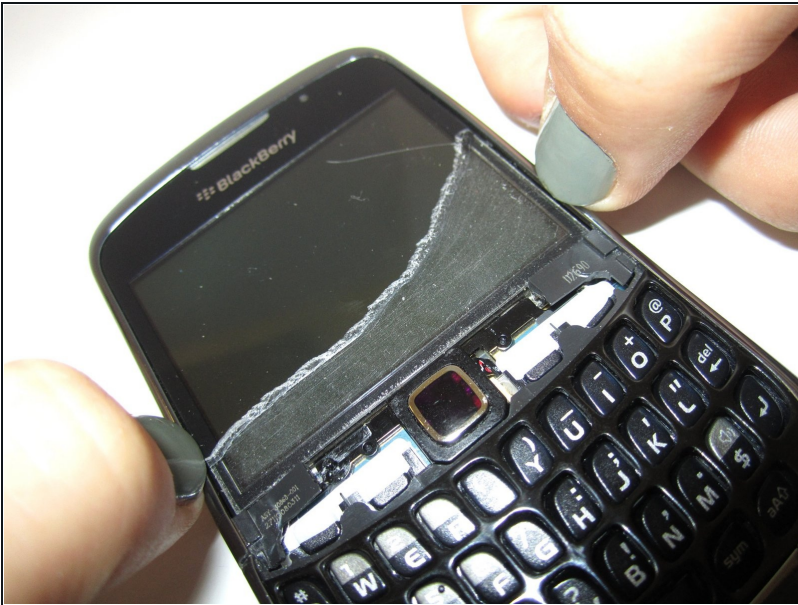


## Step 6



- Use a plastic opening tool to lift the bottom edge of the front cover.

## Step 7



- Use your nails to unclip the sides of the frame from the phone.

## Step 8



- Lift and remove the frame.

## Step 9



- Lift and remove the keyboard.

## Step 10 — Screen



- Locate and remove the two 5mm screws on top of keyboard base using the T6 Torx screwdriver

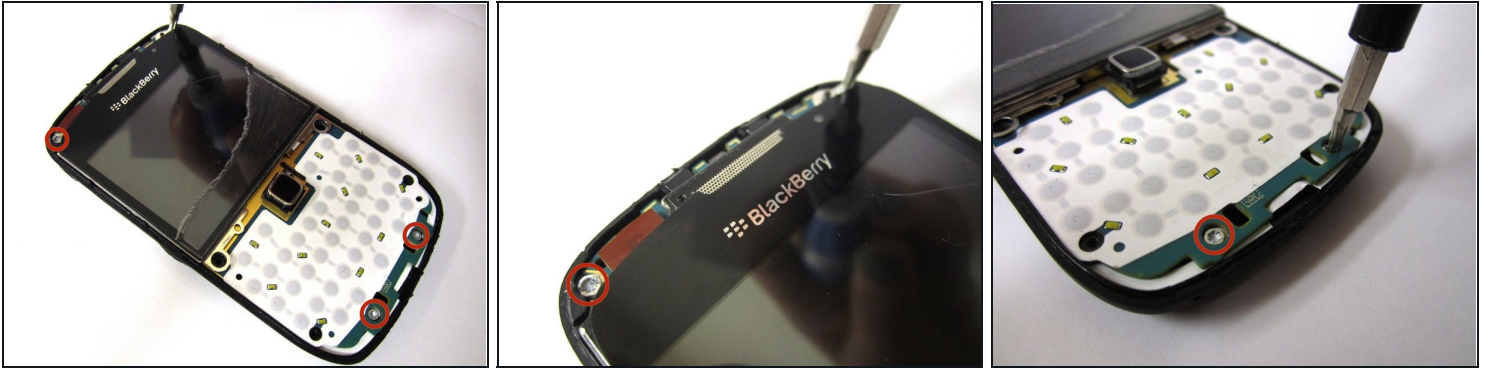
## Step 11



- Carefully pull the keyboard base up and away from the phone.
- Disconnect the keyboard base from the phone completely.

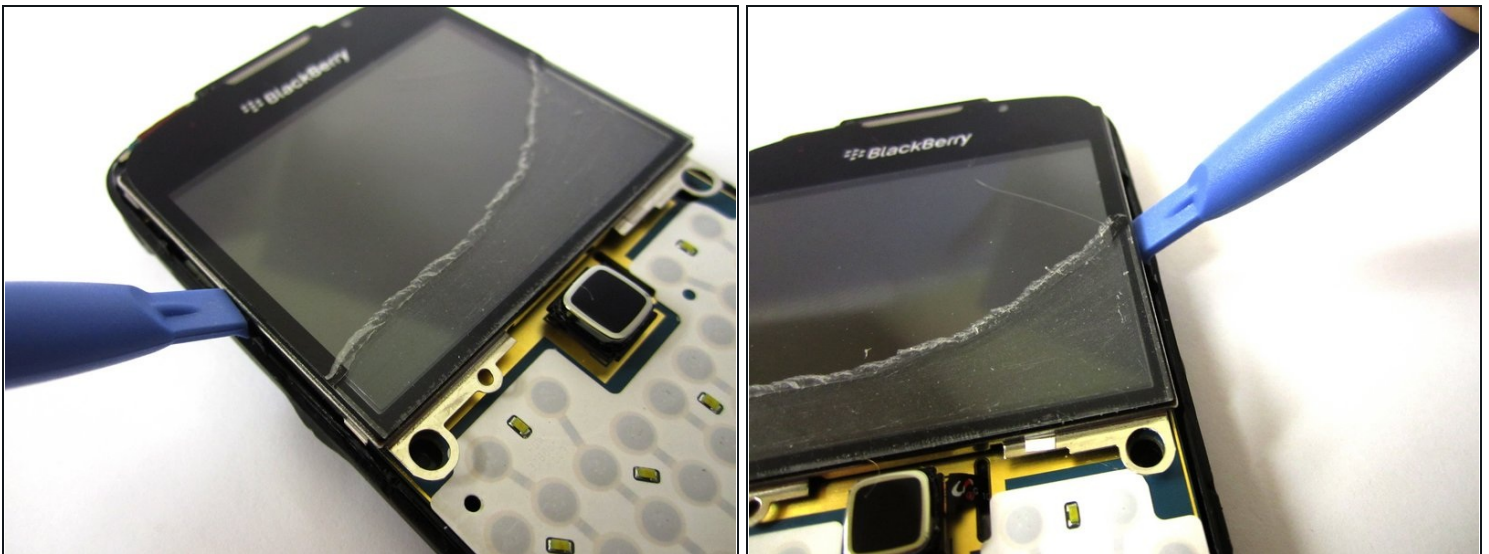


## Step 12



- Locate and remove the four 5mm screws on the top and bottom of the phone with a T6 Torx screwdriver

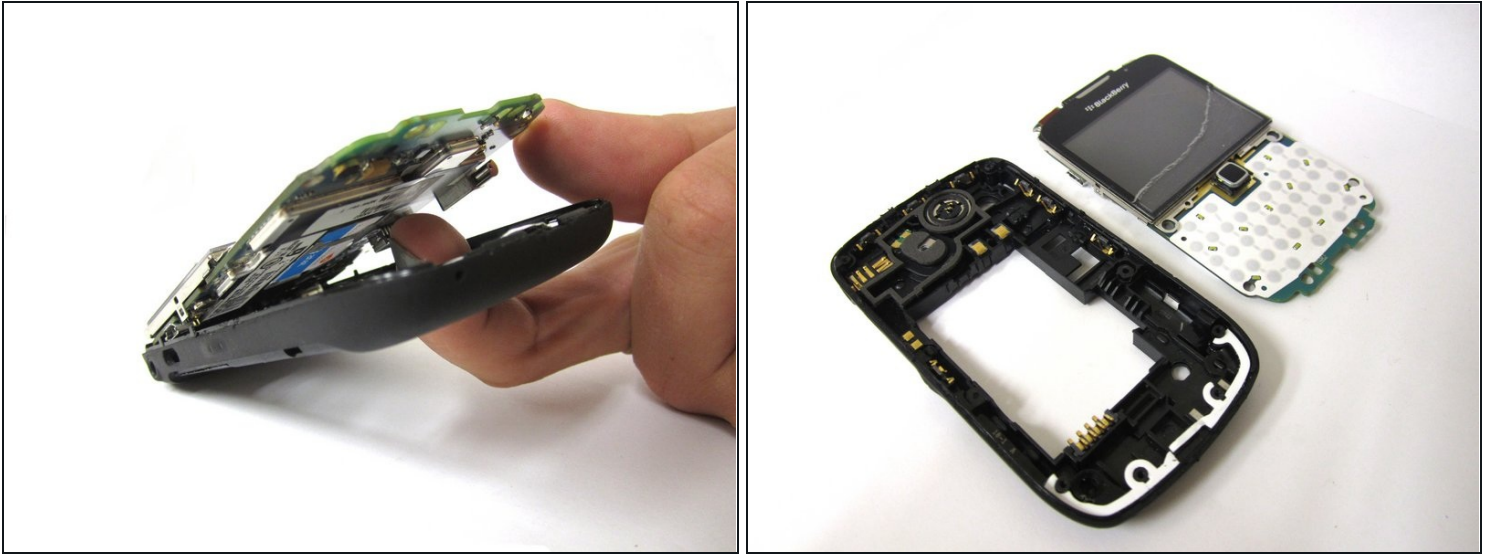
## Step 13



- Use a plastic opening tool to find the crease below the screen.
- Insert where shown and use the tool to unclip the two sides of screen from body.
  - ① The opening tool goes approximately midway between the top and bottom edge of the screen.

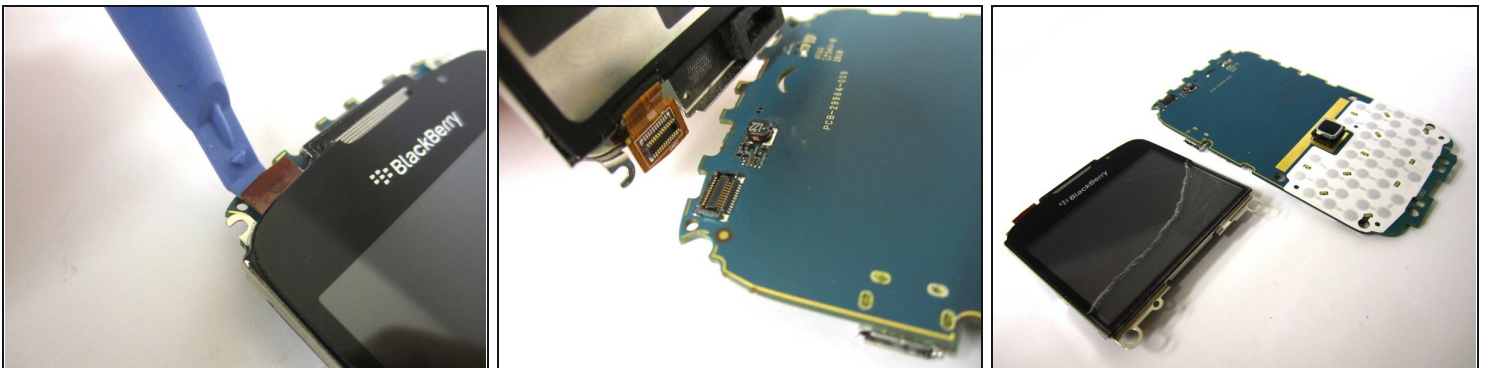


## Step 14



- From the back of the phone, use a finger to push the front piece of the phone away from the back piece.

## Step 15



- Use a plastic opening tool to detach the ribbon cable from the top left corner of the screen, and separate the screen from the motherboard.

---

To reassemble your device, follow these instructions in reverse order.