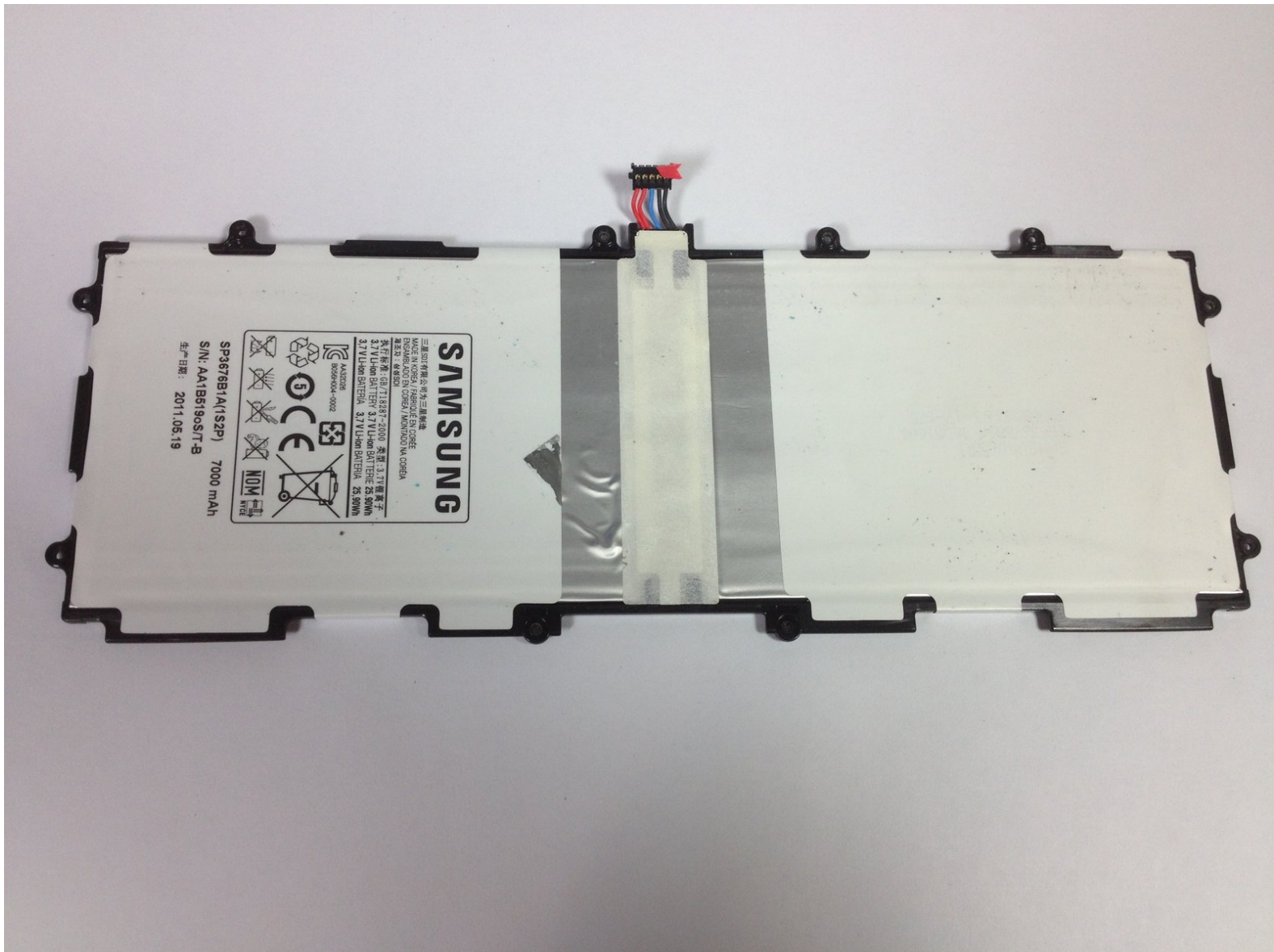




Samsung Galaxy Tab 10.1 Battery Replacement

Use this guide to help you remove your battery on your Samsung Galaxy Tab 10.1.

Written By: Jess McCafferty



INTRODUCTION

In this guide, you will learn how to replace the battery on your Samsung Galaxy Tab 10.1. Having a bad or broken battery can be frustrating. There are a couple prerequisites we need to get out of the way first!



TOOLS:

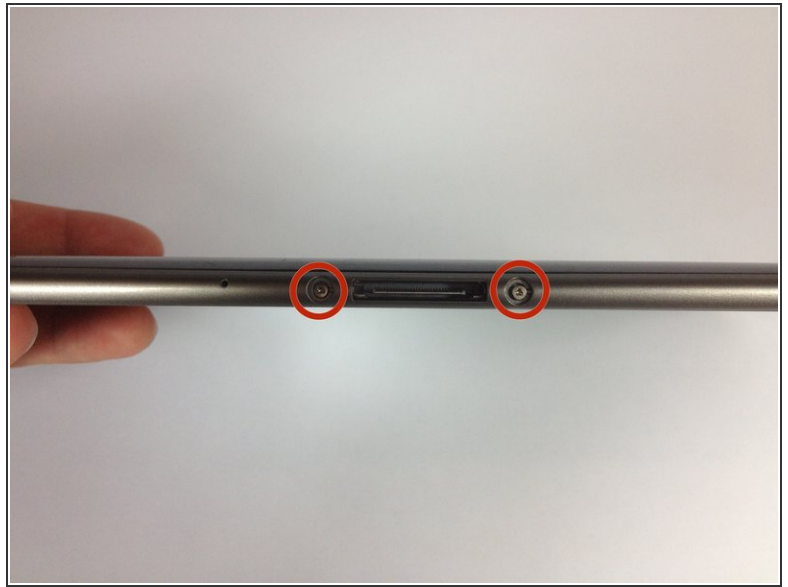
- [iFixit Opening Tools](#) (1)
- [Phillips #00 Screwdriver](#) (1)
- [iFixit Opening Picks set of 6](#) (1)
- [Y1 Tri-point Screwdriver](#) (1)



PARTS:

- [Galaxy Tab 10.1 Replacement Battery](#) (1)

Step 1 — Rear Panel



- Place the bottom of the tablet towards you.
- Remove the 4.1mm screws near the charge port with a Tri-Wing screwdriver.
 - If there are plastic tabs covering these screws, use pointed tweezers to pry the tabs out.
- ⓘ On model GT-P7500, this step is omitted, as that model doesn't have these 2 screws.

Step 2



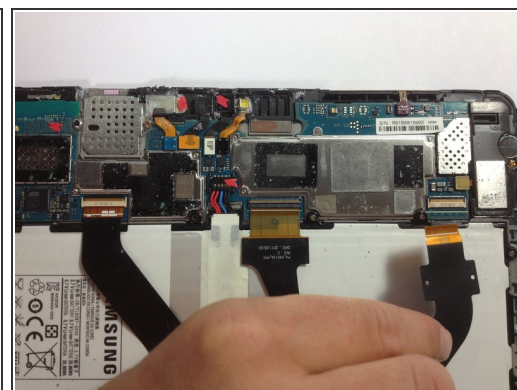
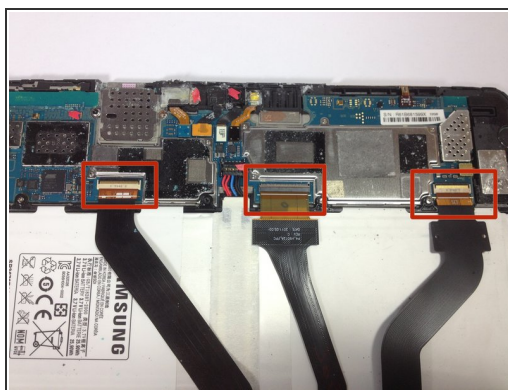
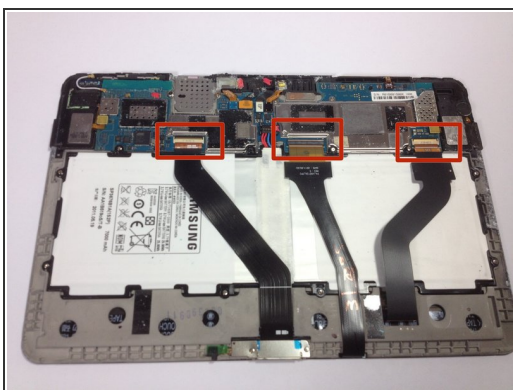
- Start in the middle of the left side and insert a plastic opening tool between the rear panel and the front panel assembly.
 - Carefully run the plastic opening tool along the left and top edge to pry the rear panel away from the rest of the device.
 - ⓘ Place opening picks along the side you have already pried open to keep the back panel detached from the rest of the device.
- ⚠ Be sure to work carefully, as prying too firmly can crack the screen.

Step 3



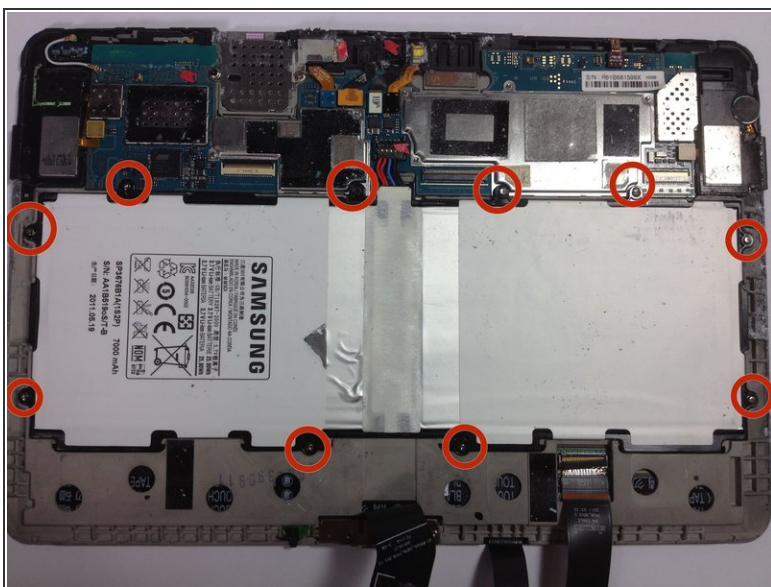
- Using the plastic opening tools, continue to carefully run along the right and bottom edge, and then lift the screen from the back panel.

Step 4 — Battery



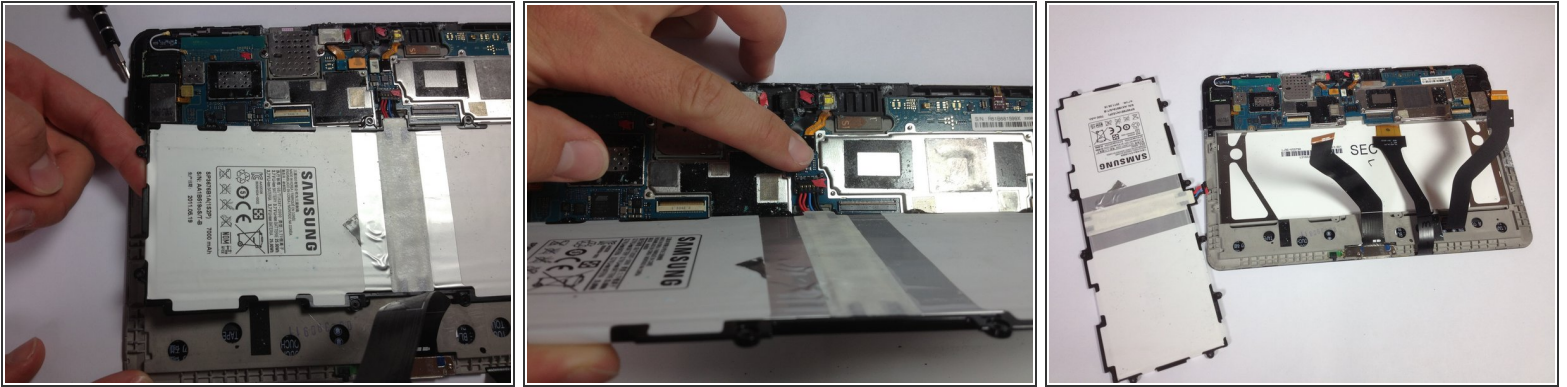
- Flip up the retaining flaps on the ZIF connectors that secure the three large ribbon cables.
- Carefully pull the three ribbon cables from their sockets on the motherboard.

Step 5



- Remove the ten 3 mm Phillips #00 screws surrounding the battery.

Step 6



- Lift the edge of the battery up with your finger or a spudger.
- Detach the battery by holding the motherboard down while gently lifting the battery up.

To reassemble your device, follow these instructions in reverse order.