



BlackBerry 8703e Screen Replacement

This repair guide shows you how to remove the screen on the BlackBerry 8703e.

Written By: Johnathon Gorski





TOOLS:

- [T6 Torx Screwdriver](#) (1)
 - [iFixit Opening Tool](#) (1)
 - [Spudger](#) (1)
-

Step 1 — Battery



- Position your phone like the first image so that the highlighted button is on your left.
- Slide the battery cover to the left while pressing the button with one hand and applying pressure on the center of the phone with your other hand.
- Remove the cover completely and set it aside.

Step 2



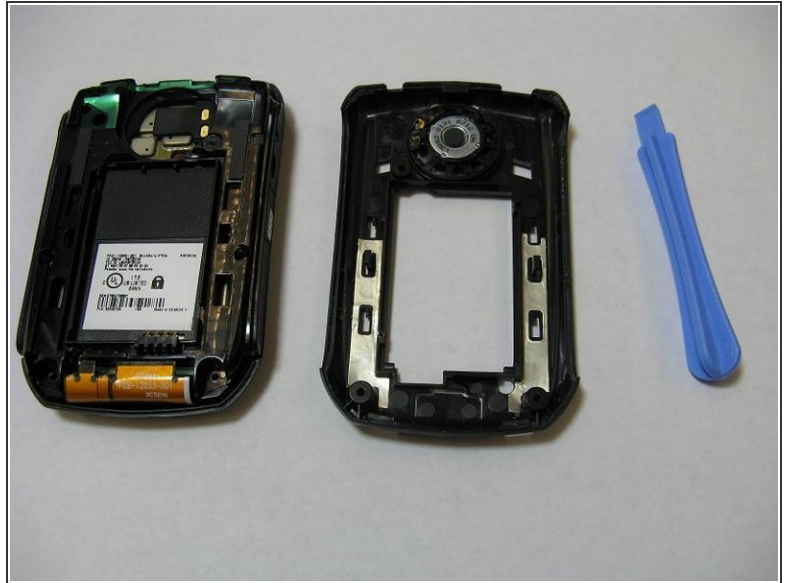
- Position your phone like the image to the left, then locate the rectangular battery in the middle of the phone.
- Locate the notch on the top right of the battery compartment.
- Slide your fingernail or the flat end of a Spudger in the notch, then lift upwards on the top of the battery to remove it from the phone.
- Set the battery aside and out of the way.

Step 3 — Case



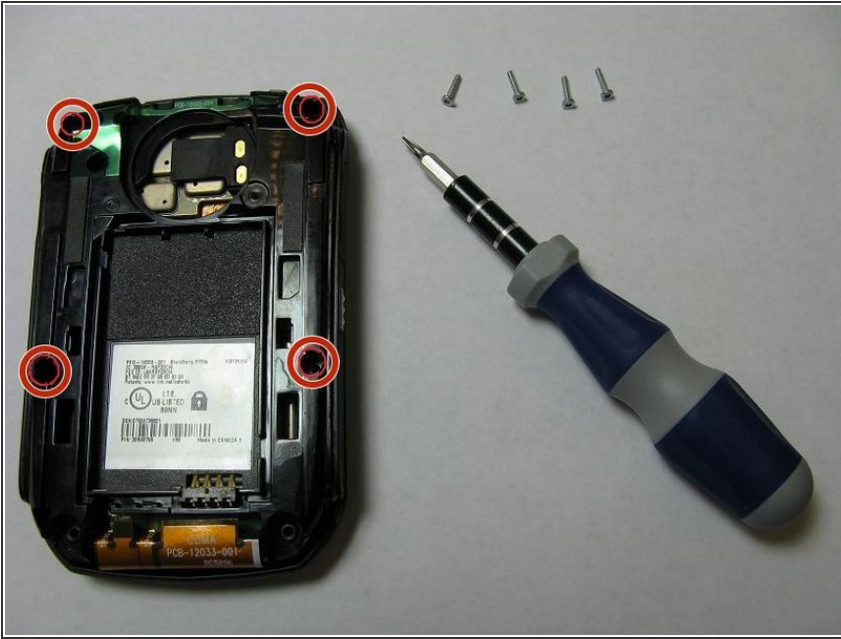
- Make sure the back of the phone is facing upwards like the image on the left.
- Remove all three screws highlighted in the image by turning them counter-clockwise using the T6 Torx Screwdriver.

Step 4



- Locate the notch in the back of the phone.
 - Use your thumb to push up on the notch, separating the back half of the phone from the keyboard and screen in the front.
 - Slide the opening tool in between the two halves of the phone.
 - Continually apply upward pressure with the opening tool to pop the back casing off of the main body.
 - Set the back casing aside and out of the way.
- i** You should now have five parts: The battery cover, the battery, the screws, the back casing, and the main body of the phone.

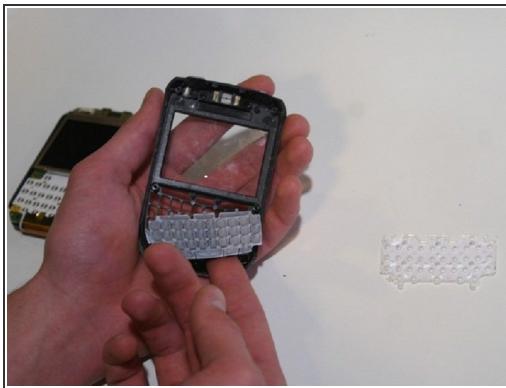
Step 5



⚠ Do not separate the front casing from the rest of the phone during this step. Keep the phone face-down on a flat surface.

- Remove these four screws by turning them counter-clockwise with the T6 Torx Screwdriver.

Step 6



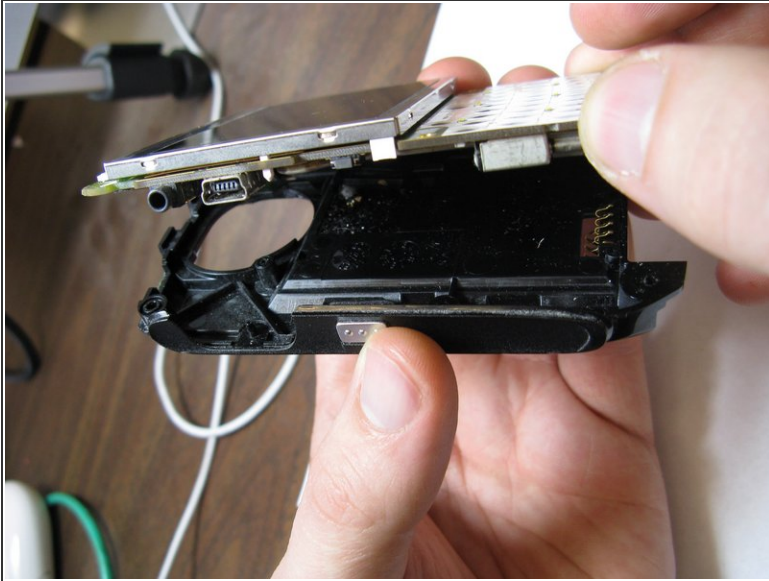
- Hold the phone so the screen faces downward like in the first image, and remove the front casing.
 - Remove the two keyboard components from the front casing, then set them aside.
- i** If the components or a black port protector fell out while removing the front case, then still set them aside. Take note that the two keyboard components may remain stuck together.

Step 7 — Screen



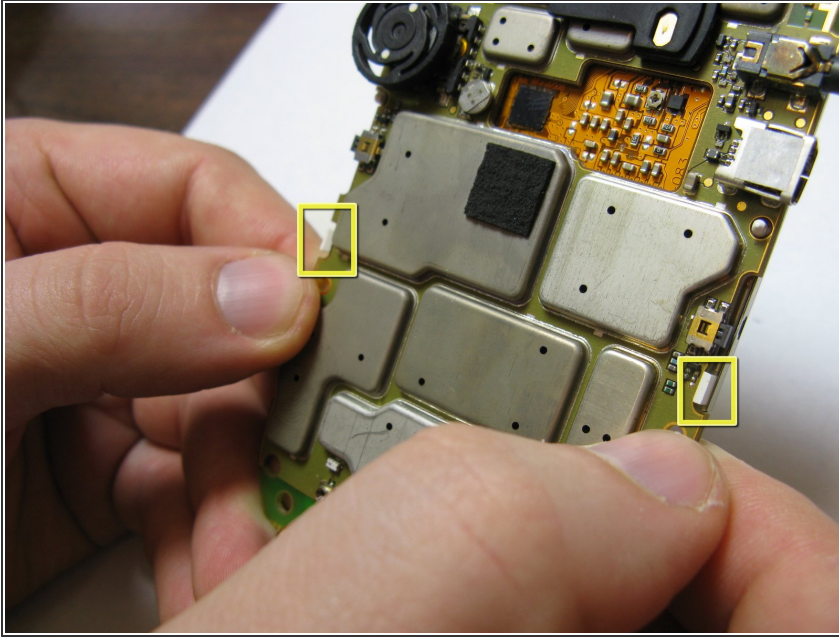
- The port protector is shown in the picture and located on the upper left side when looking at the screen of the phone.
- If the port protector did not fall off when removing the front casing and keyboard components, remove it and set it to the side.

Step 8



- You should be able to easily remove the battery housing from the logic board by simply pulling them apart.
- You should now have 7 main components: battery cover, battery, back casing, front casing (including both keyboard pieces), port protector, battery housing and logicboard with screen attached.
- You should also have 7 screws.

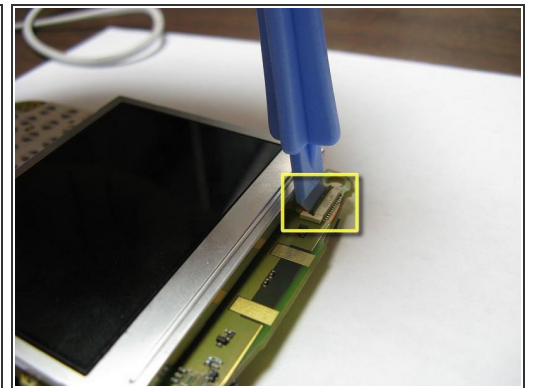
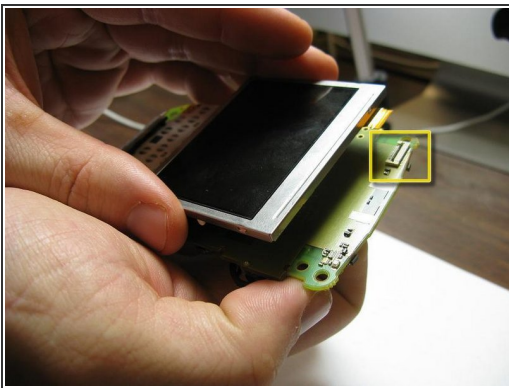
Step 9



⚠ Caution, be careful not to break the plastic hooks highlighted in the photo, be gentle.

- With the screen facing down, **gently** use both thumbs to push down and *slightly* out on the 2 highlighted hooks attaching the bottom of the screen to the logic board.
- **With caution** repeat this for the 2 hooks attaching the top of the screen to the logic board.

Step 10



⚠ This step requires **extreme caution** to avoid snapping off the small black clip highlighted in the picture.

- There is a small strip on the upper left of the screen that is connected to the logic board by a small black clip. It is highlighted in the picture.
- Holding the screen and logic board together, use the plastic opening tool to push the clip into the *up* position as shown in the picture.
- With the clip in the *up* position, remove the screen from the logic board.

To reassemble your device, follow these instructions in reverse order.