



# Electric dryer defective drive belt Replacement

Electric dryer defective drive belt Replacement

Written By: Nick Ivanov



## INTRODUCTION

One of the common problems with electric clothes dryers is a broken drive belt. It's quite easy to replace one: it will only cost you \$15-\$20 for the part and about 1 hour of your life



### TOOLS:

- [Phillips #1 Screwdriver](#) (1)



### PARTS:

- [Dryer drive belt](#) (1)

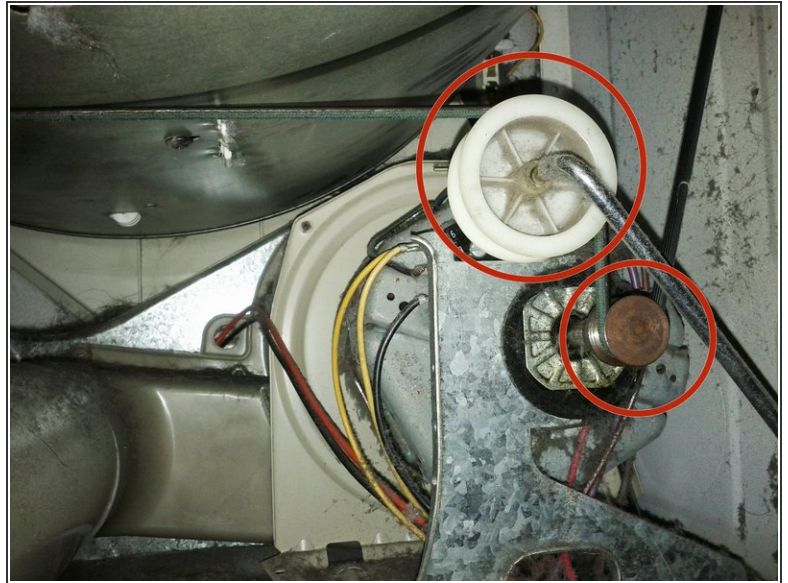


## Step 1 — Defective Drive Belt



- There are many brands of electric dryers out there, but fortunately their construction follows just a few basic designs. The one I'm describing is a 20 year old Canadian Eaton model, but some of the inexpensive models sold today have the same construction.
- A good indicator that you are dealing with a similar model is the presence of three screws at the end of the drum, which you can see after opening the appliance door. In these appliances the drum is held in place by the axis connected by the three screws you can see in the picture and the friction pads at the front panel of the dryer.
- The first thing you will want to do is reach behind the dryer and unplug it from the electric outlet.

## Step 2



- If the belt is not yet completely broken, you will need to disengage it from the motor and the tensioner. To do that, unscrew the service door at the back.
- Inside the door you will see the drive belt, wrapped around the motor pulley and the tensioner. Reach inside the appliance, push down on the tensioner lever, and disengage the belt. Be careful not to cut yourself: there are sharp metal edges all around.

To reassemble your device, follow these instructions in reverse order.