



PSP 1000 Front Casing Replacement

This guide will show you how to remove the...

Written By: Henry Lee



INTRODUCTION

This guide will show you how to remove the PSP's housing/frame.



TOOLS:

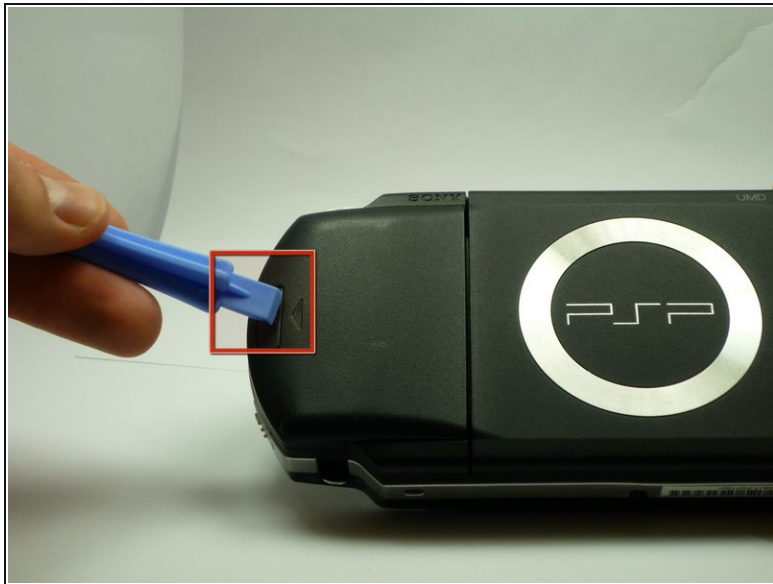
Phillips #00 Screwdriver (1)

Step 1 — Battery



- Turn the PSP over so its back is facing you.

Step 2



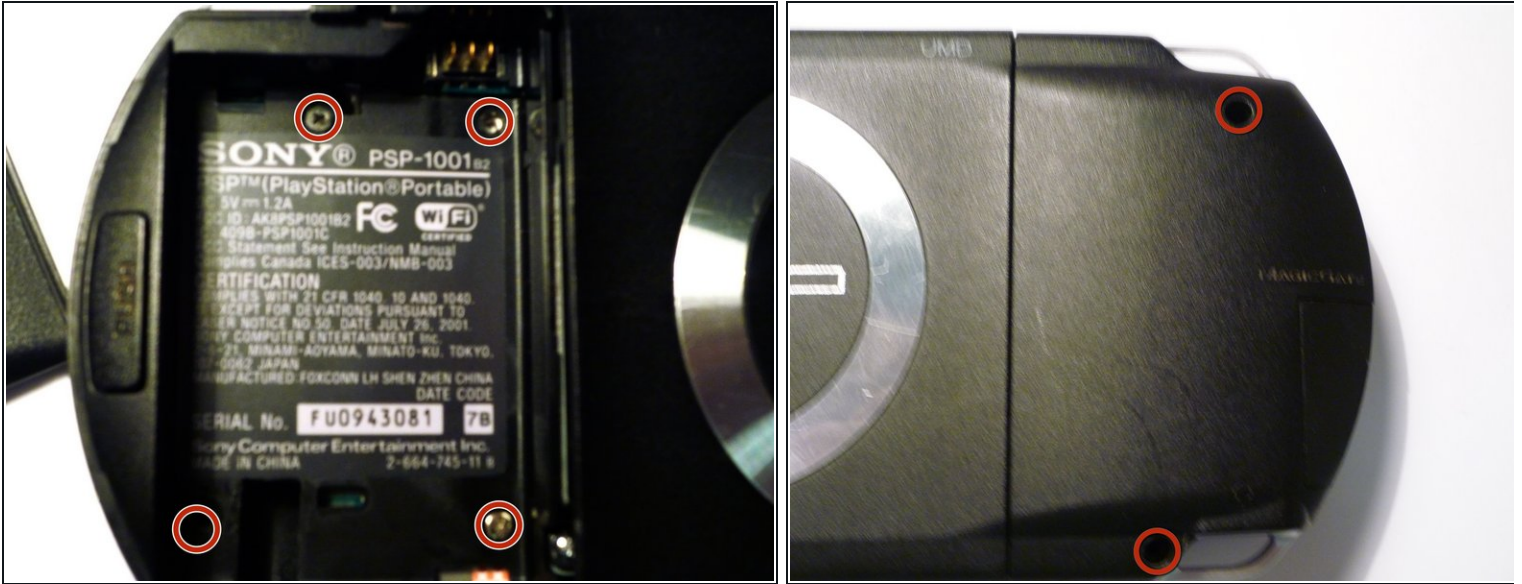
- Locate the battery casing button on the rear-left side of the PSP.
- Press down the button and remove the battery cover.

Step 3



- Using your finger, remove the battery upwards from the system as shown.

Step 4 — Front Casing



- Remove the four screws shown with a Phillips #00 screwdriver.
- ⓘ You will have to peel back the guarantee sticker to access the screw on the lower left.

Step 5



- Remove the screw from the bottom side of the PSP. Keep it separated from the rest of the screws.
- Remove screws from back righthand side within the holes.

Step 6



- Gently separate the outer plastic casing from the rest of the system as shown.

To reassemble your device, follow these instructions in reverse order.