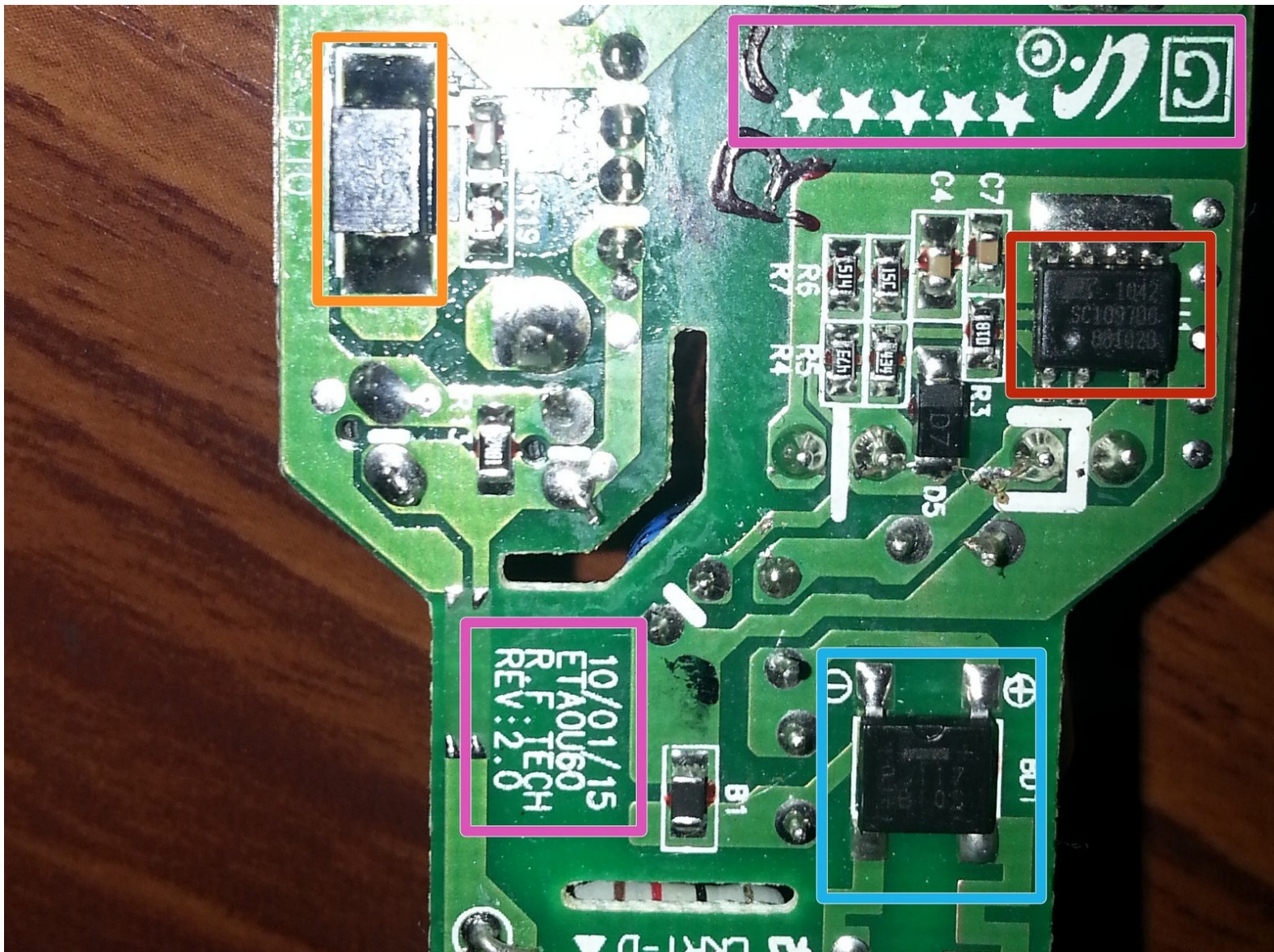




# Samsung USB Charger

I bought a sgs3. it have an oem 700mA charger. and i also want to buy a 2A sgs 4 oem charger. and i bought a new oem one from ebay. they say it is oem one. after it arrive i check it self. itz clearly see its an oem one. charging rate is also faster than

Written By: harsha



## INTRODUCTION

*I bought a sgs3. it have an oem 700mA charger. and i also want to buy a 2A sgs 4 oem charger. and i bought a new oem one from ebay. they say it is oem one. after it arrive i check it self. itz clearly see its an oem one. charging rate is also faster than*



### TOOLS:

- 2.5 mm Flathead Screwdriver (1)

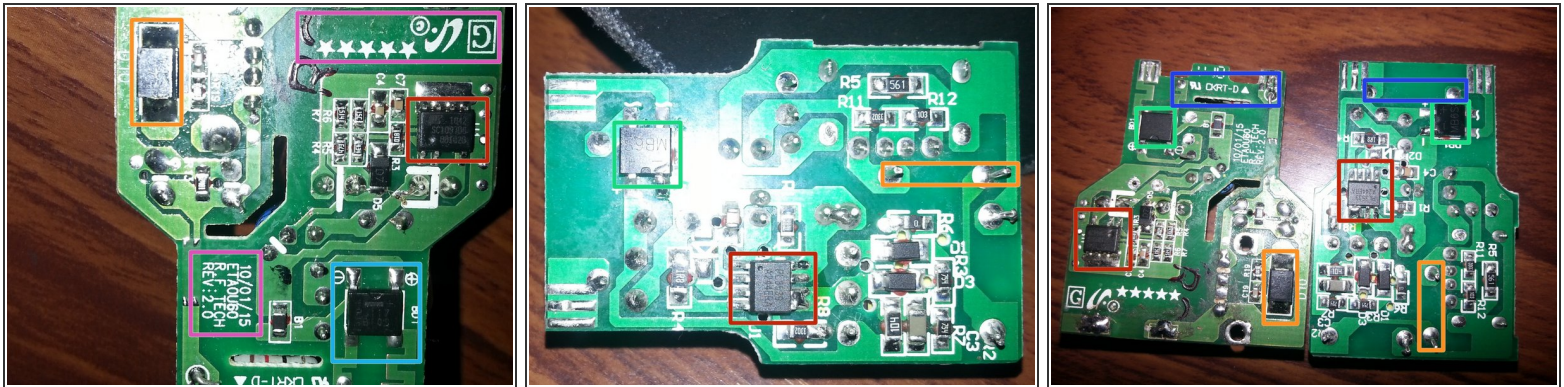


### PARTS:

- Polyurethane Glue (1)

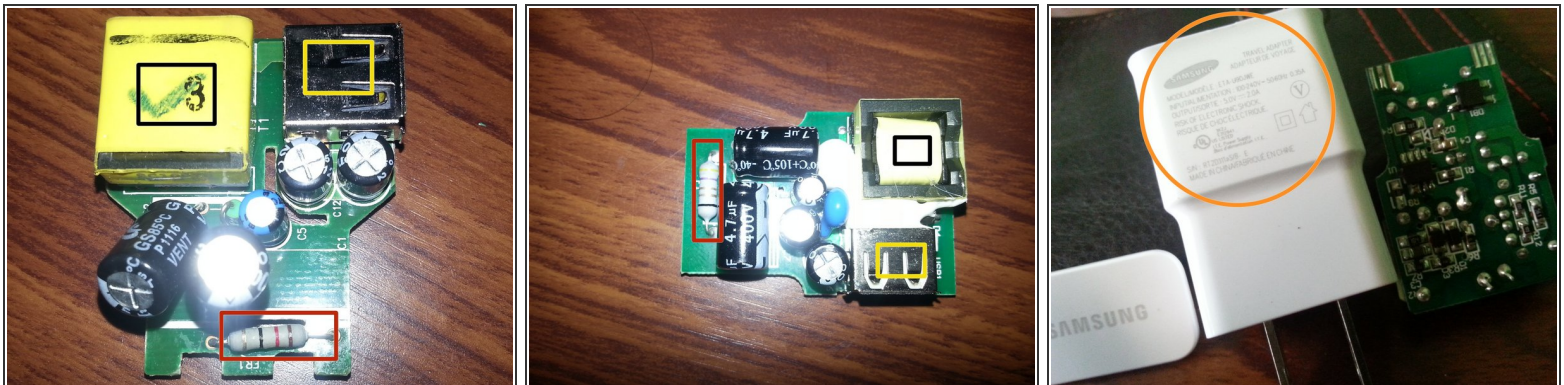


## Step 1 — Samsung USB Charger



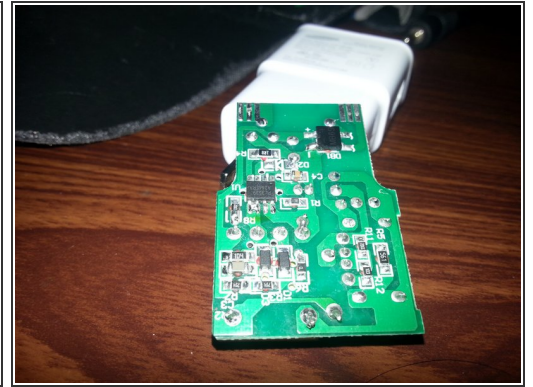
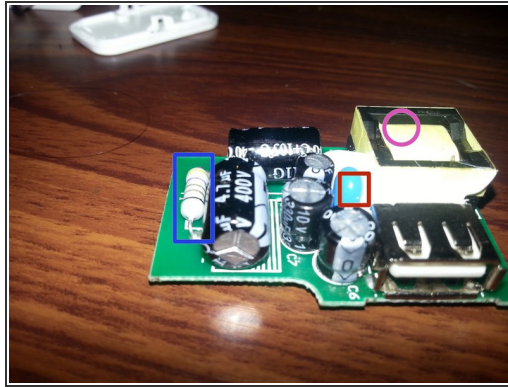
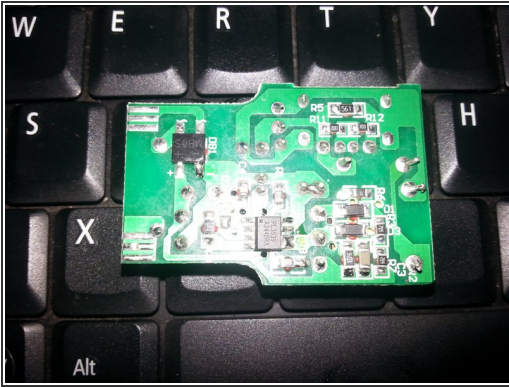
- Samsung OEM LOGO and the Date of Manufacturing OEM Chager
- Control IC SC1097DG OEM PL3539 For Fake
- Bridge Rectifier TB10S for OEM MB6S For fake
- Scotty Diode 5A for OEM 2A for Fake
- Fuse Resistor

## Step 2



- Fake Samsung But also Best Quality. its give 1.3A
- Fully Isolated Transformer in OEM one
- USB Port
- Fused Resistor for Safety

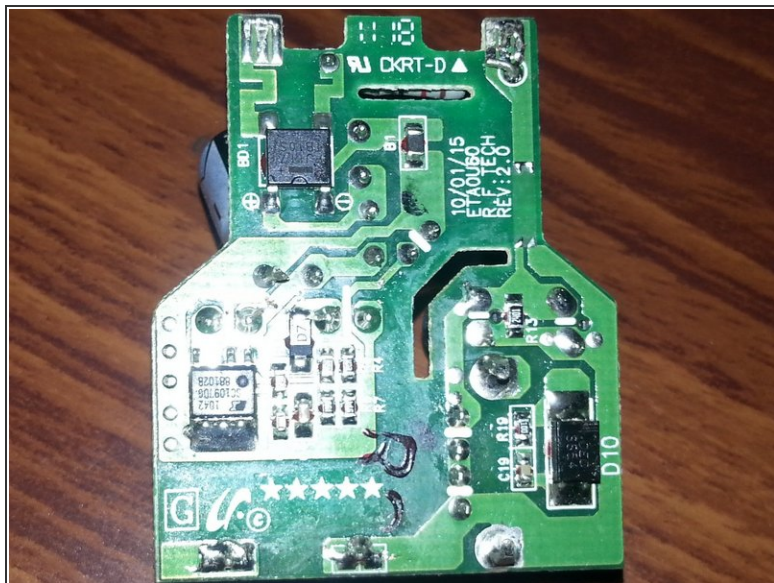
## Step 3



- Blue component is a special "Y" capacitor to reduce interference. (2A charger)
- Transformer not fully isolated than OEM one
- Fuse Resistor



## Step 4



**(i) Always Buy OEM Genuine**

**⚠ Disassembled By Harsha Jayamanna**

**(i) END OF THE TEARDOWN...**

● **Thanks For Watching**

To reassemble your device, follow these instructions in reverse order.