



Nikon D70 Flash Repair

How to repair the Nikon D70 (D70s, D80 or similar DSLR) flash Not working

Written By: Andres Matias Dabas



INTRODUCTION

This guide will show how to easily repair a non-firing flash from a Nikon D70, D70 series, D80, or similar single-reflex lens (SLR) camera. This is a very common problem encountered by many users.



TOOLS:

- [Phillips #0 Screwdriver](#) (1)
-

Step 1 — Nikon D70 Flash Repair



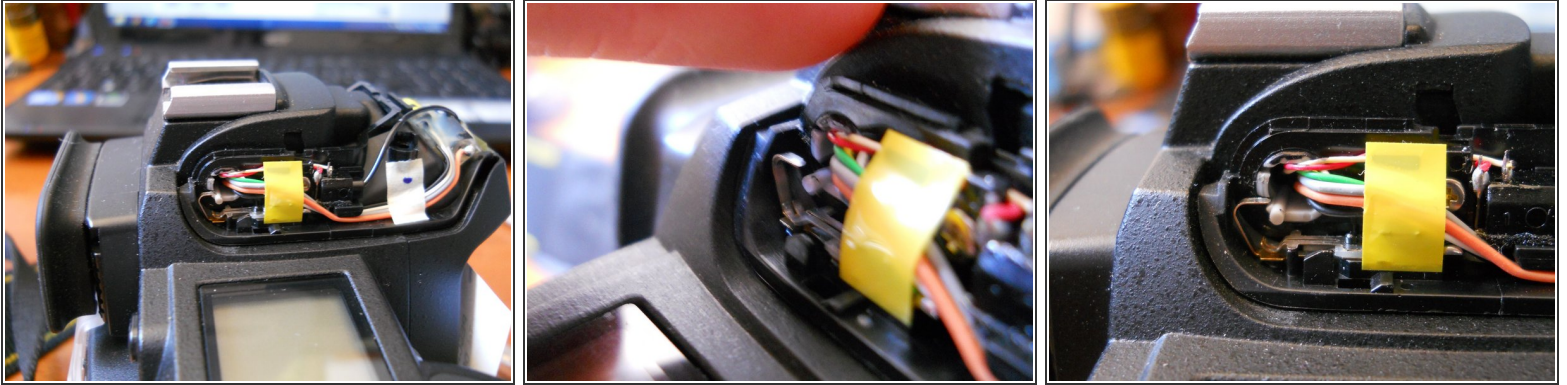
- Ensure that the Built-in flash is OPEN before proceeding.
- If present, remove the lens. To remove the lens, press and hold the lens-re-lease button while turning the lens clockwise. Be sure the camera is off when removing or exchanging lenses. Keep the lens mount covered with the supplied body cap to ensure that no dust, dirt, or other foreign matter enters its inside.
- Remove the battery. To remove it, while keeping the camera off, slide the battery-chamber cover latch to the open position and remove the battery.

Step 2



- Unscrew the built-in flash with a #000 Phillips screwdriver.
- Notice that screws are slightly angled toward the outside of the flash unit.

Step 3



- On the far left of the wiring compartment it can be noticed a metallic, "C shaped" tab. Close to it it can be also noticed a small plastic white cylinder. The metallic tab **need** to wrap over the white cylinder to ensure the flash behavior.
- Notice that there are 2 little plastic tabs that block the cylinder body. You need to **depress** them and pull the cylinder towards you. After that, hook the metal tab over the plastic cylinder.
- **CAUTION:** be sure to NOT touch any metal piece with your hands while following the repairing steps. Even though the camera battery was removed, discharging capacitors could still be charged and give you a considerable shock.
- **CAUTION:** make sure the wire insulation is intact to avoid short circuits. Be also sure that no wire has unsoldered to ensure the flash functioning.

Step 4



- To reassemble, reverse the steps.

If you correctly followed this guide, you built-in flash is now working again.