



Reverse Applique Patch

Patch your jeans with a reverse applique.

Written By: Brittany McCrigler



INTRODUCTION

Patch your jeans with a reverse applique. This technique is great for holes that have a large chunk of cloth missing. You can cut any shape and use any color fabric for the patch, so long as it is heavy-weight fabric.

For replacement parts or further assistance, contact [Patagonia Customer Service](#).

TOOLS:

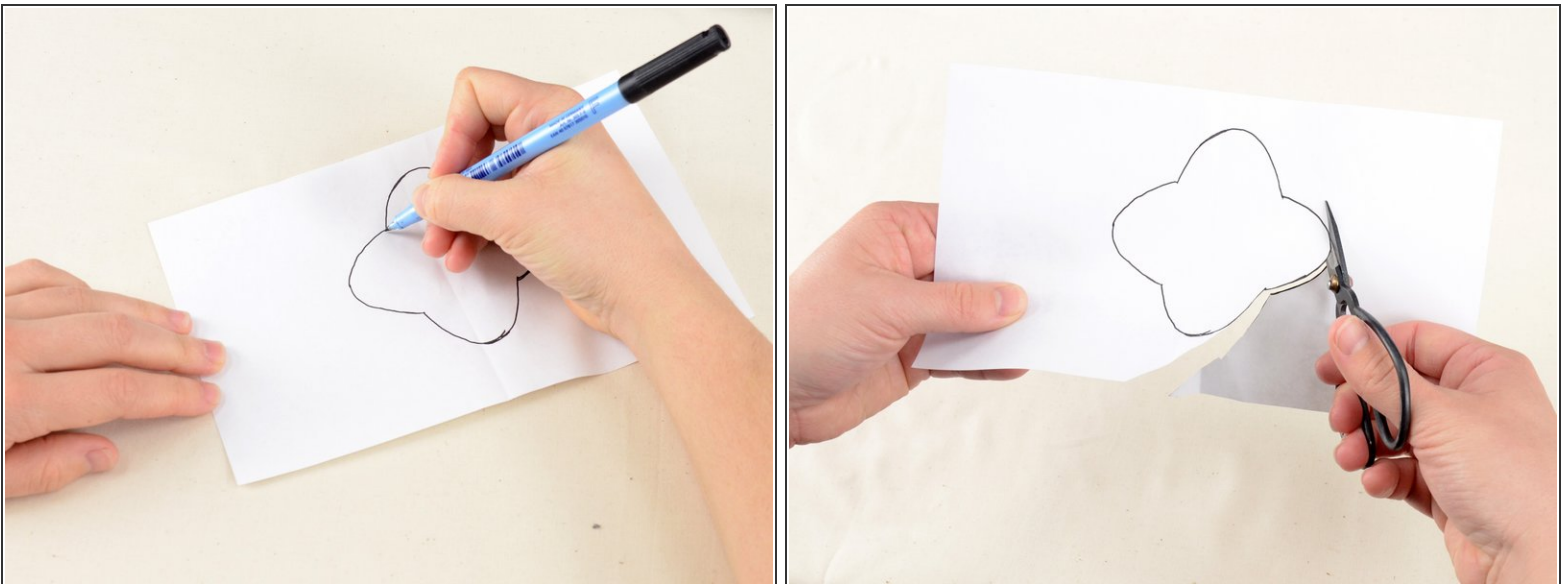
- [Sewing Machine](#) (1)
 - [Utility Scissors](#) (1)
 - [Measuring Tape](#) (1)
-

Step 1 — Reverse Applique Patch



- Examine the damage. Clip any long threads, and remove any debris from the hole.
- Measure the damaged area.
 - In our case it looks to be 2" by 2".

Step 2



- Draw any the shape you'd like your patch to be on a piece of paper. Be sure your design is at least 1/8" larger than the damaged area.
- Cut out your design.

Step 3



- Lay the cutout of your design over the hole in the jeans to make sure that it is the correct size and looks how you want it to.

Step 4




- Using a pencil, pen, or tailor's chalk, trace the design onto the jeans.

Step 5



- Cut the design out of your jeans.

 Be sure to only cut one layer of denim, or you will cut through the back of your jeans and need two patches!

Step 6



- Take the scrap of fabric you will use for a patch and insert it into the hole.

Step 7



- Slide the pant leg with the patch over the arm of the sewing machine.
- ⓘ You may need to remove the sewing machine table for the pant to fit over the sewing machine.
- ⓘ If you are still having trouble getting the pant around the arm of the sewing machine, you can rip the side seam of the pant leg to allow room to sew.
- ⚠ Be sure that the pant leg is around the arm, and that you are not accidentally sewing the two layers of the pant leg together.

Step 8



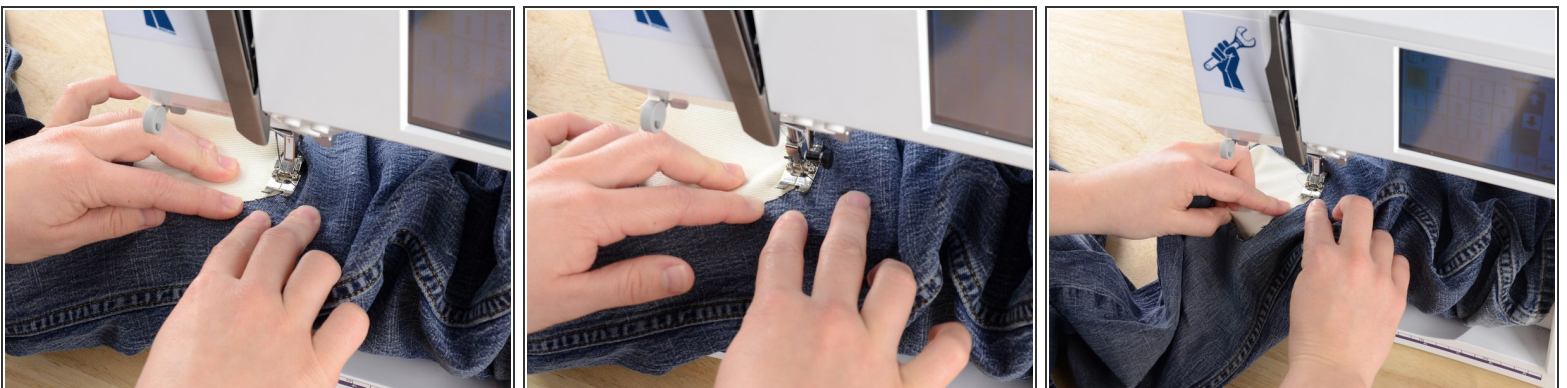
- Adjust the sewing machine for a zig-zag stitch.
- Set the stitch length to just under 1/2.

Step 9



- Align the edge of the patch with the center of the pressor foot.
- Be sure that the patch is laying flat.
- Lower the pressor foot.
- Begin sewing the zig-zag stitch, following the edge of the hole so that the zig-zag stitch covers the area where the two fabrics meet.

Step 10



- Sew all the way around the patch.
- Overlap the stitching at the end with the first two or three stitches.

Step 11



- Lift the pressor foot and needle.
- Slide the pant leg off of the arm of the sewing machine.
- Clip any threads, and admire your work.