



# Samsung Galaxy Note II Midframe Replacement

Use this guide to replace a Galaxy Note II...

Written By: Sam Goldheart





# INTRODUCTION

Use this guide to replace a Galaxy Note II midframe.



## TOOLS:

[iFixit Opening Tool](#) (1)

[Phillips #00 Screwdriver](#) (1)



## PARTS:

[Galaxy Note II Midframe](#) (1)

### Step 1 — Stylus



- Grasp the end of the stylus and remove it from its slot in the midframe.



## Step 2 — Rear Case



- Pry with a plastic opening tool, or your fingernail, in the divot to the left of the rear-facing camera, near the power button.

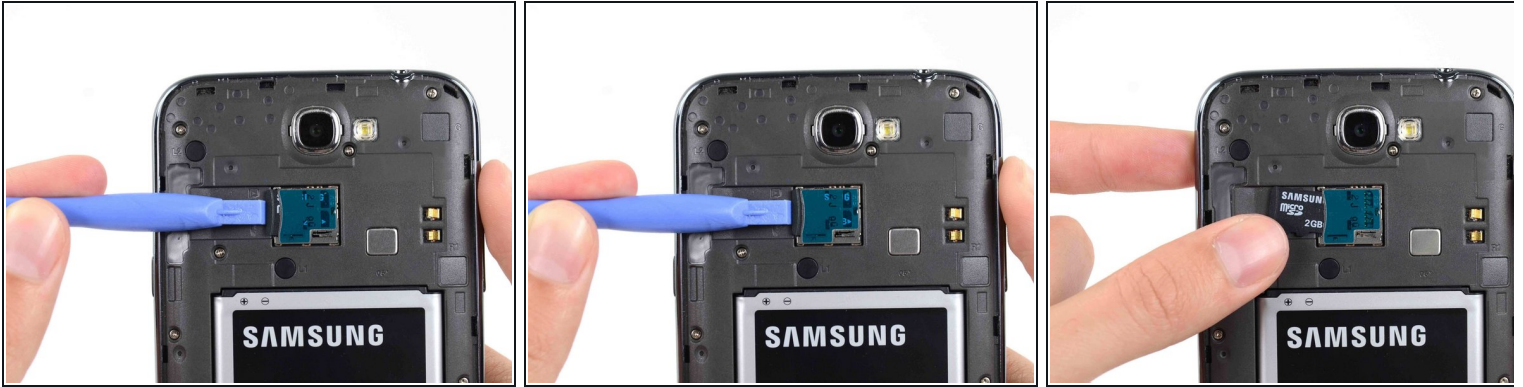
## Step 3



- Lift the rear case by the corner nearest the divot and remove it from the phone.

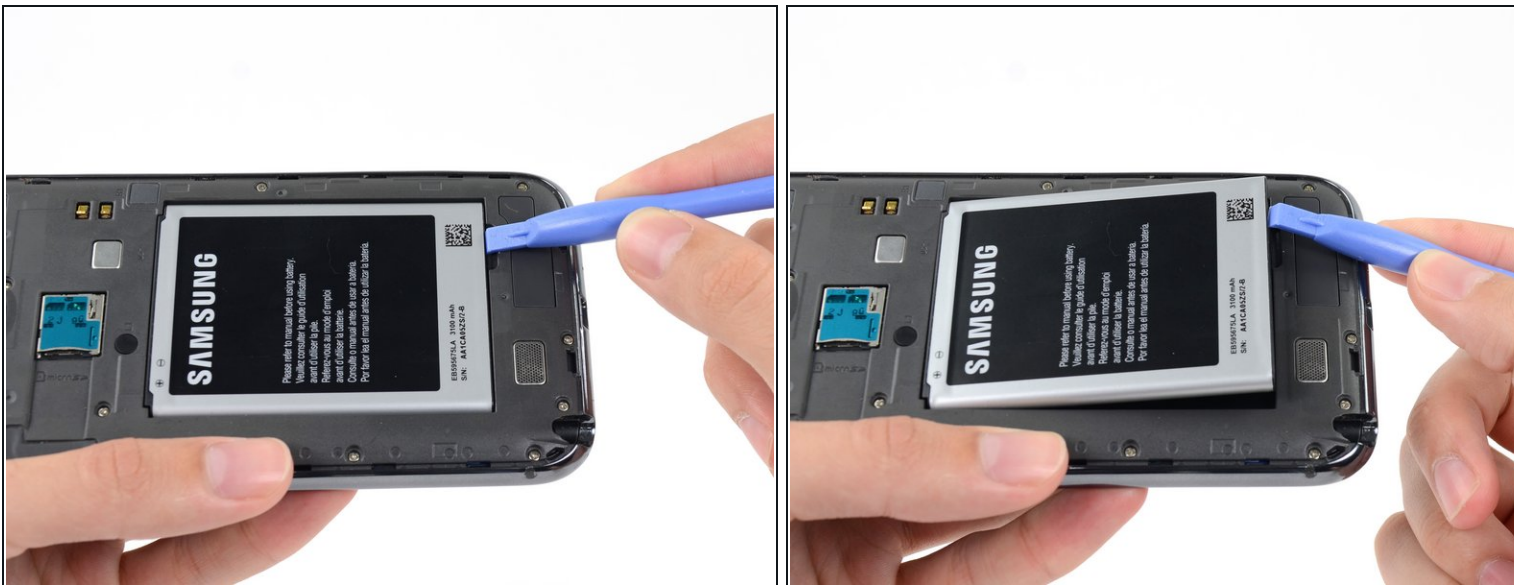


## Step 4 — MicroSD Card



- If you have an SD card inserted, use the flat end of a spudger, or your fingernail, to press the microSD card slightly deeper into its slot until you hear a click.
  - After the click, release the card and it will pop out of its slot.
  - Remove the microSD card.
- ☒ For reassembly, push the microSD card into the slot until it clicks in place.

## Step 5 — Battery



- Insert a plastic opening tool, or your finger, into the notch of the battery compartment and lift the battery upward.



## Step 6



- Remove the battery from the midframe.

## Step 7 — Midframe



- Remove the eleven 4.0 mm Phillips #00 screws securing the midframe to the display assembly.



## Step 8



- Insert your plastic opening tool between the midframe and front panel assembly on the side of the phone.
- Slide the plastic opening tool down the seam.

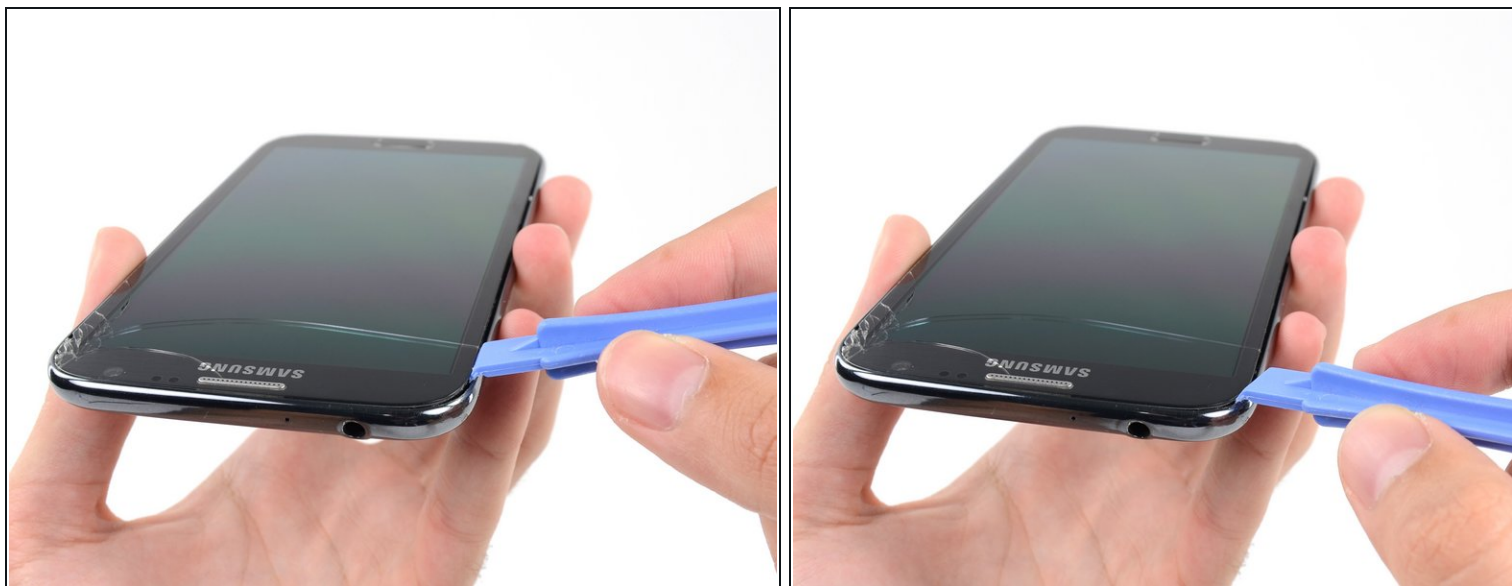
## Step 9



- Continue to run the plastic opening tool down the seam.



## Step 10



- Carefully pry around the corner with a plastic opening tool.

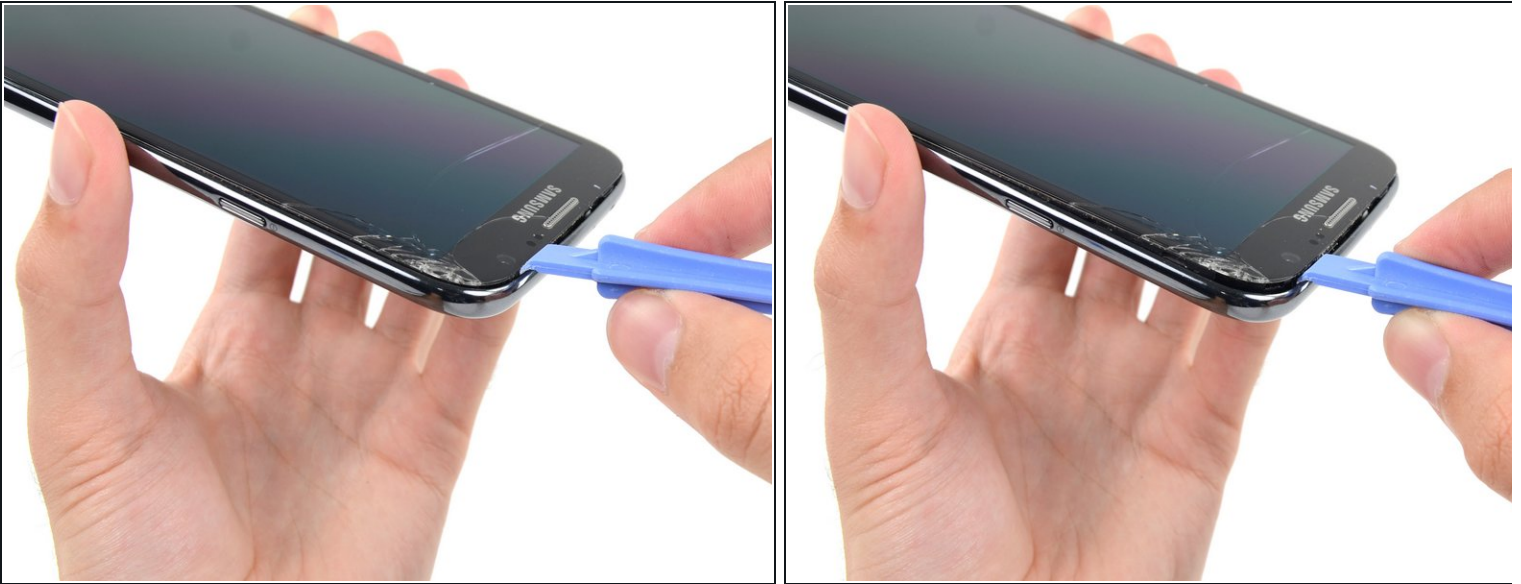
## Step 11



- Pry along the top of the phone with a plastic opening tool.



## Step 12



- Push the plastic opening tool down to free the corner of the midframe from the display assembly.

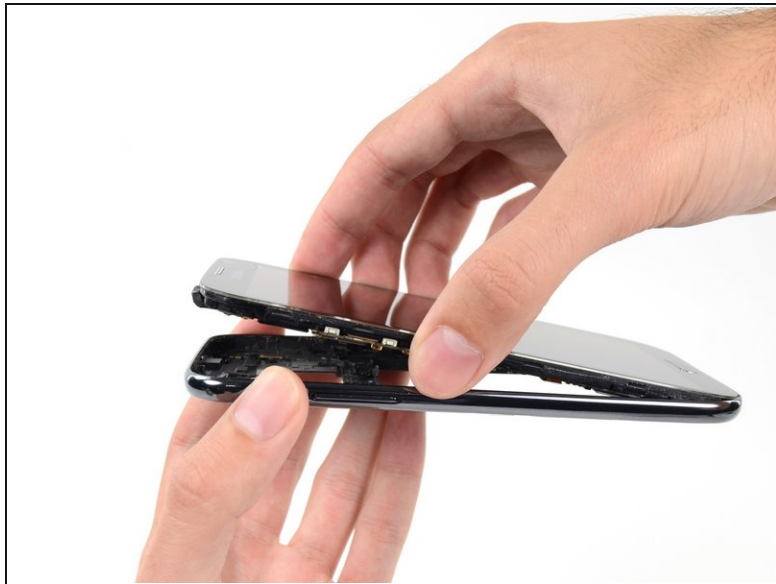
## Step 13



- Free the clips along the power button side of the phone.
- Lastly, free the two clips along the top and bottom edge of battery compartment.



## Step 14



- Lift the display assembly out of the midframe.

To reassemble your device, follow these instructions in reverse order.