



# **Samsung Epic 4G Touch Front Facing Camera/Earpiece Speaker Assembly Replacement**

Replace the front facing camera/earpiece speaker assembly in your Samsung Epic 4G Touch.

Written By: Walter Galan



## INTRODUCTION

Use this guide to replace the front facing camera/earpiece speaker assembly.



### TOOLS:

- [iFixit Opening Tools](#) (1)
- [Phillips #00 Screwdriver](#) (1)
- [Spudger](#) (1)



### PARTS:

- [Galaxy S II Front Camera Bracket](#) (1)
- [Galaxy S II Front Camera](#) (1)

## Step 1 — Rear Case



- Insert a plastic opening tool, or your fingernail, into the opening near the left side of the headphone jack.
- Pry the opening tool downward to pop the rear case from its clips securing it to the the midframe.

## Step 2



- Lift and remove the rear case.

### Step 3 — microSD Card



- Use the flat end of a spudger, or your fingernail, to press the microSD card slightly deeper into its slot until you hear a click.
  - After the click, release the card and it will pop out of its slot.
- ✦ During reassembly, push the microSD card into the slot until it clicks in place.

### Step 4



- Pull the microSD card away from its slot.



## Step 5 — Battery



- Wedge a plastic opening tool into the crevice between the battery and midframe located near the bottom left corner.
- Push the plastic opening tool downward to pry the battery up from its housing.

## Step 6



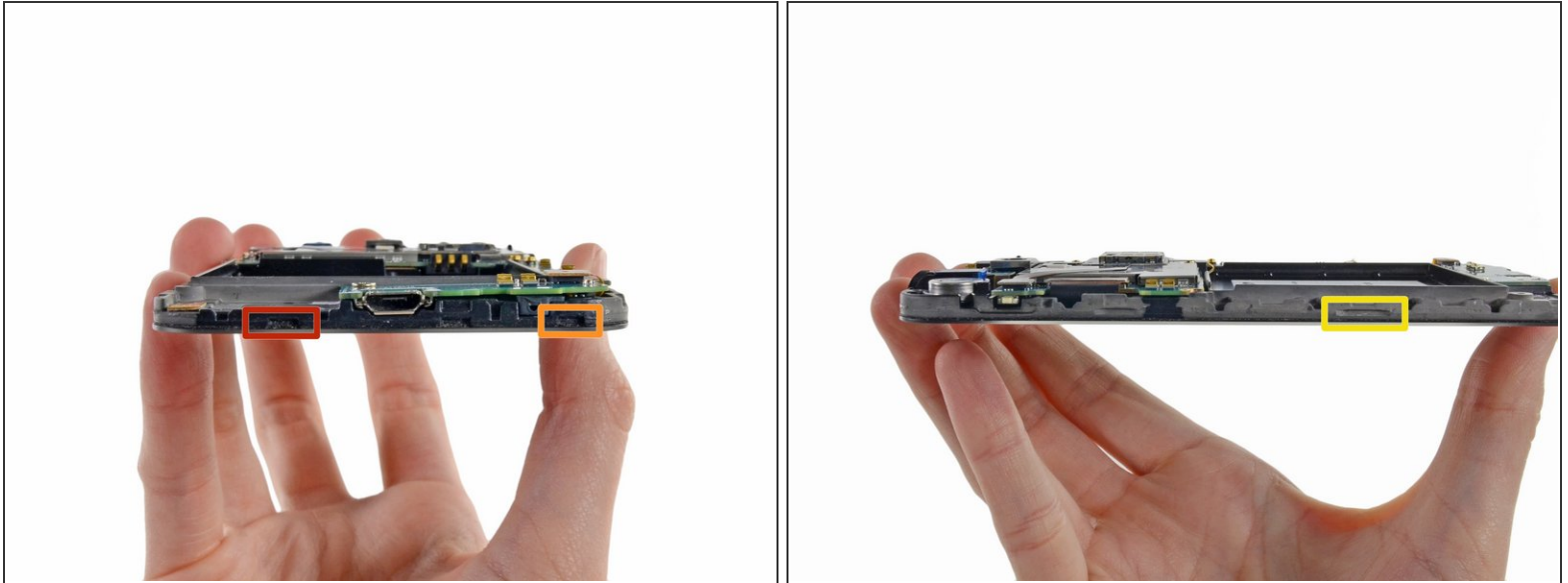
- Lift and remove the battery from the midframe.

## Step 7 — Plastic Midframe



- Remove the six 4.0 mm Phillips #00 screws securing the midframe to the front panel assembly.

## Step 8



**i** Unless you pry at the right insertion points, you might have a difficult time removing the midframe. This shot of the display assembly, with display glass facing down, is meant to help you locate them.

- The first insertion point is a divot to the left of the micro-USB port.
- The second insertion point is a divot to the right of the micro-USB port near the corner of the phone.
- The final insertion point is located about two inches to the right of the volume control toggle, toward the corner of the phone. An additional insertion point is located slightly to the right of the volume button if you need it.



## Step 9



- Insert a plastic opening tool slightly to the left of the micro-USB port, and pry between the midframe and the display to open a gap.

## Step 10



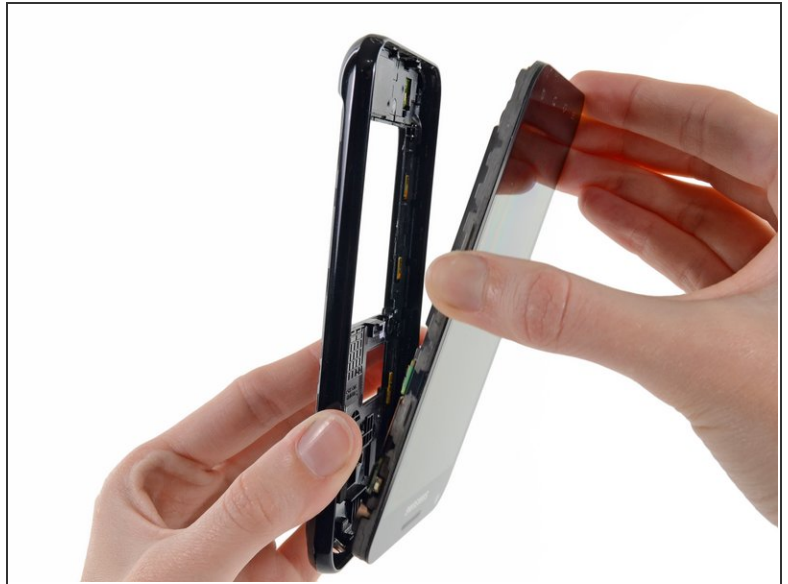
- Wedge a plastic opening tool slightly to the right of the micro-USB port, and pry between the midframe and the display to widen the gap.

## Step 11



- Pry again about two inches to the right of the volume control toggles between the midframe and the front panel assembly.

## Step 12



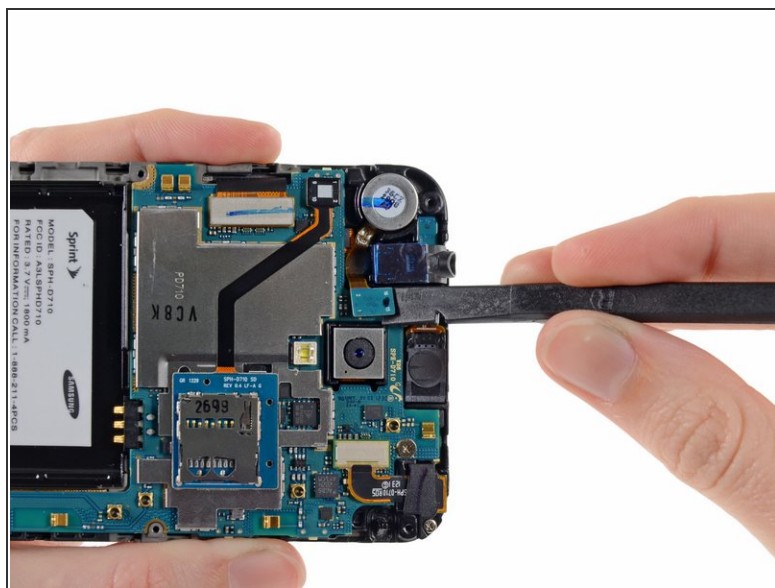
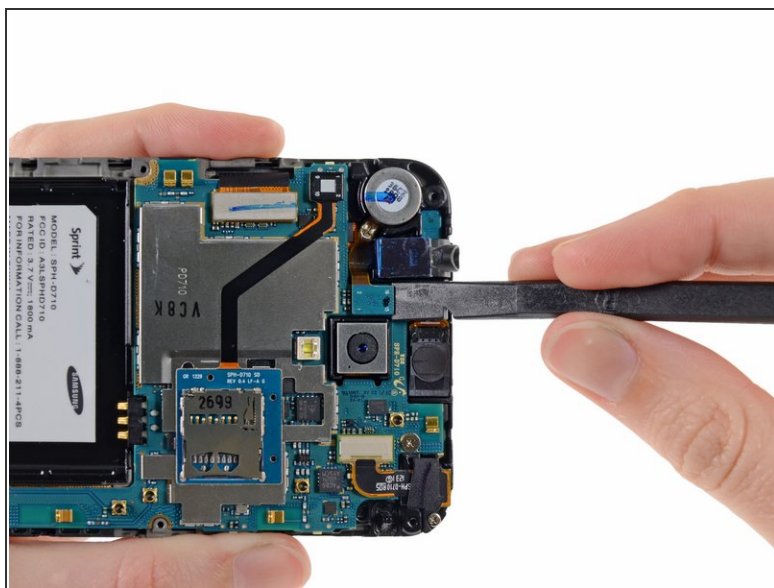
- Pull the micro-USB end of the front panel assembly out and away from the midframe and lift up to free it entirely.

## Step 13 — Motherboard Connectors



- Headphone jack/vibrator assembly cable connector
- Front-facing camera cable connector
- Digitizer cable connector
- Display cable connector

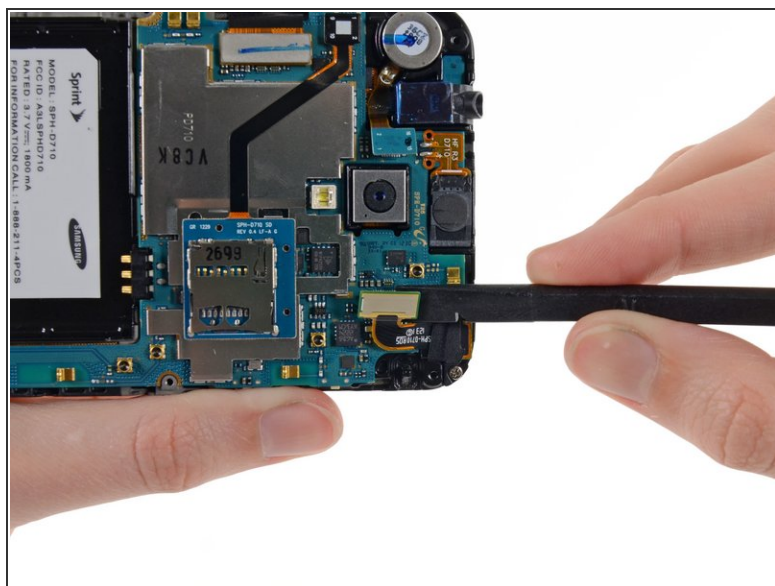
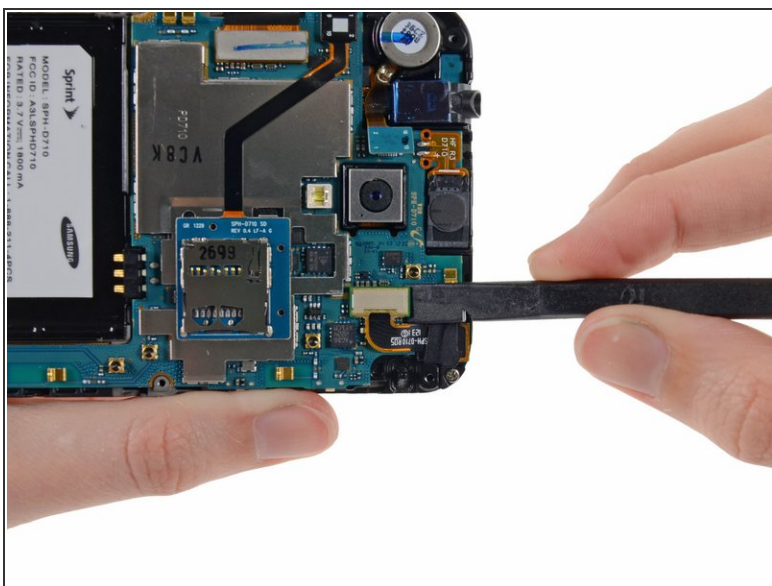
## Step 14 — Headphone Jack/Vibrator Connector



- Use the flat end of a spudger to disconnect the headphone jack/vibrator assembly cable.



## Step 15 — Motherboard Assembly



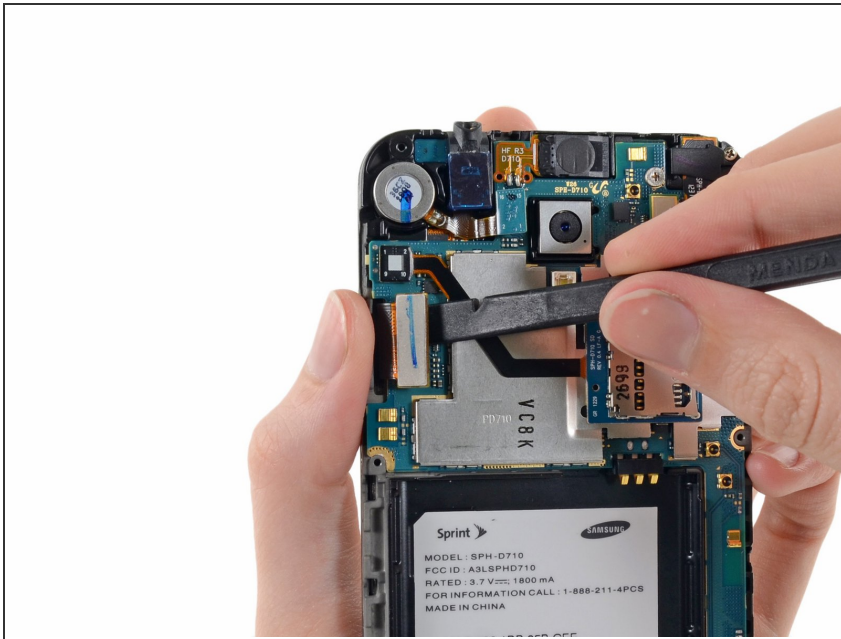
- Use the flat end of a spudger to disconnect the front-facing camera cable connector.

## Step 16



- Carefully disconnect the digitizer display cable.

## Step 17



- Use a spudger to disconnect the display cable connector.

## Step 18



- Remove the two 3 mm Phillips #00 screws.



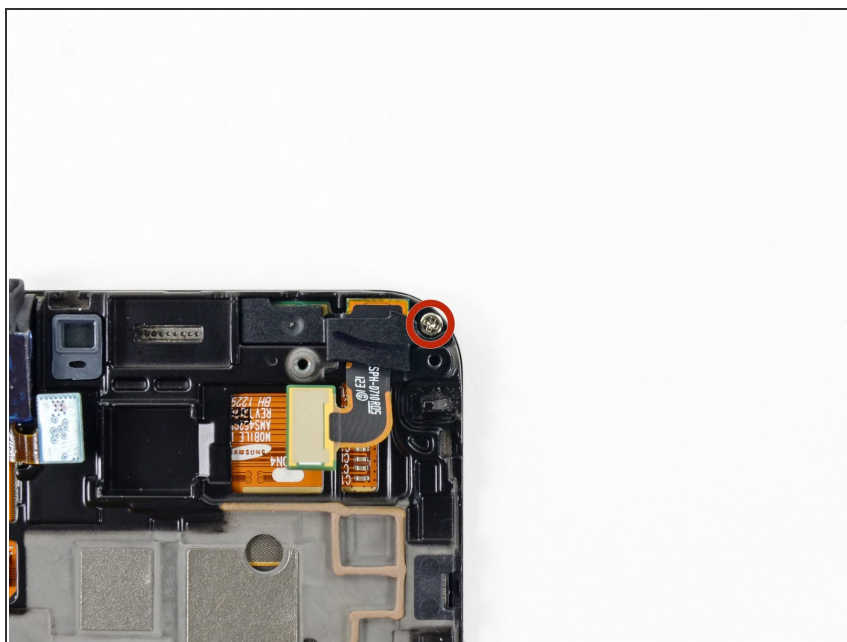
## Step 19



- Lift the micro-USB end of the motherboard away from the display assembly and pull it down.

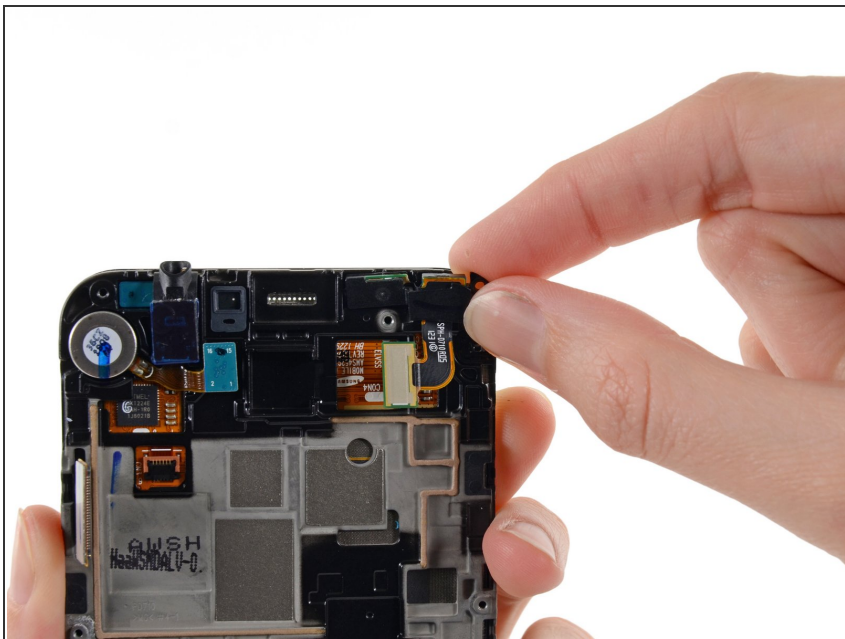
⚠ Be mindful that you don't snag the motherboard on any cables as you remove it.

## Step 20 — Front Facing Camera/Earpiece Speaker Assembly



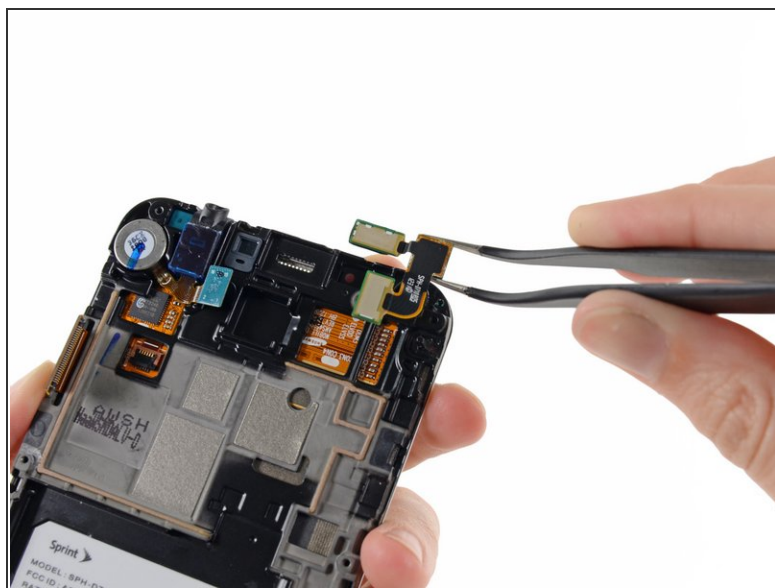
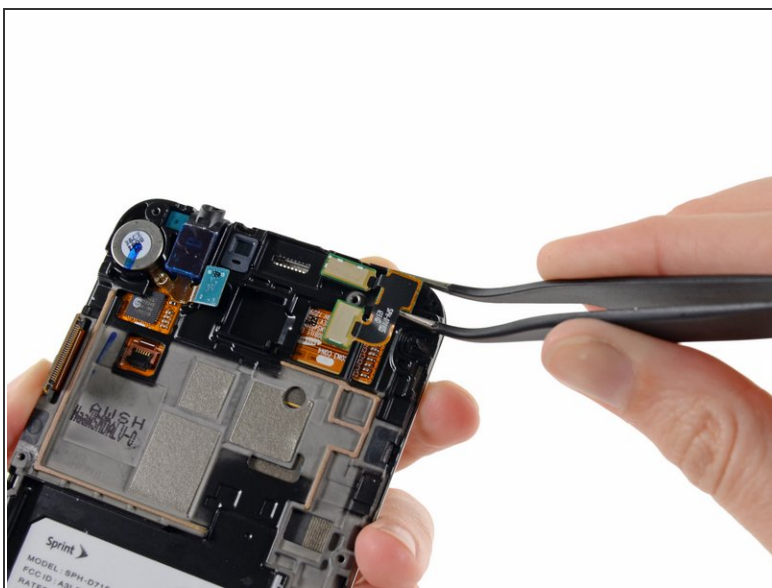
- Remove the 2.3 mm Phillips #00 screw securing the front-facing camera bracket to the display assembly.

## Step 21



- Remove the front-facing camera bracket from the display assembly.

## Step 22



- Using a pair of tweezers, or your fingers, remove the front-facing camera/earpiece speaker assembly.

To reassemble your device, follow these instructions in reverse order.

This document was generated on 2020-11-28 02:59:51 AM (MST).

