



Power Mac G4 MDD Optical Drive Cage Replacement

Written By: Chris Green



INTRODUCTION

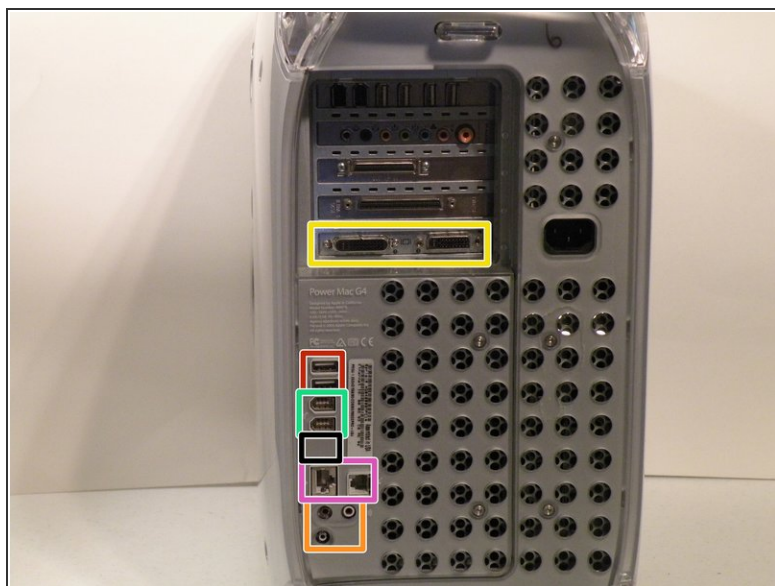
The Power Mac G4 MDD Uses a removable cage supporting up to two IDE SuperDrives.



TOOLS:

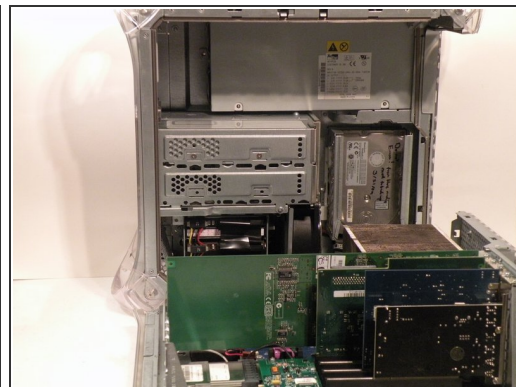
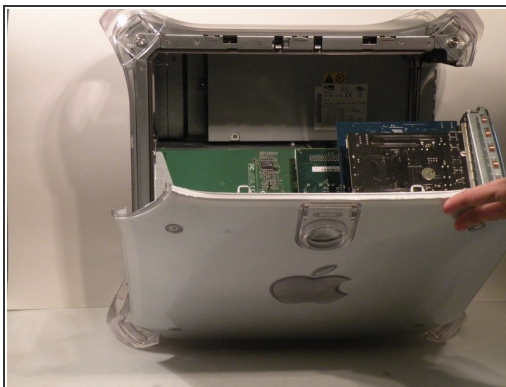
- [Phillips #0 Screwdriver](#) (1)
-

Step 1 — Case



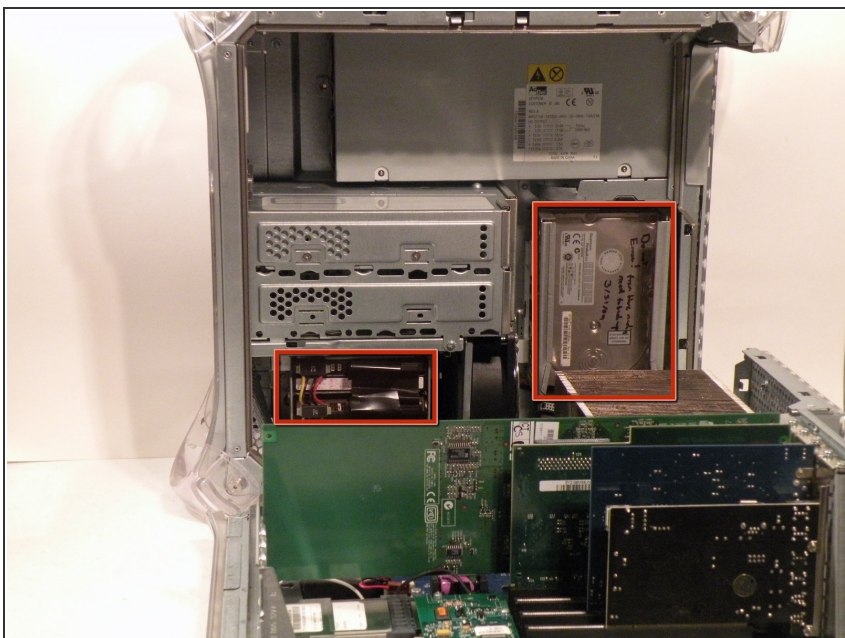
- The Power Mac G4 MDD: the last, and the fastest G4-based Mac. This computer boasted up to a Dual 1.42GHz PowerPC G4 CPU (though I have a single 1.25GHz).
- Two USB 1.1 Ports
- Assorted Audio
- Video (ADC & DVI)
- Networking (RJ-45 Ethernet/56k Modem)
- Some later model MDD's (such as the dual 1.42GHz) Have a FireWire 800 Port Here:

Step 2



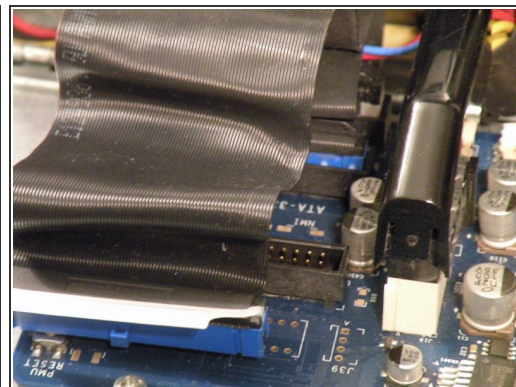
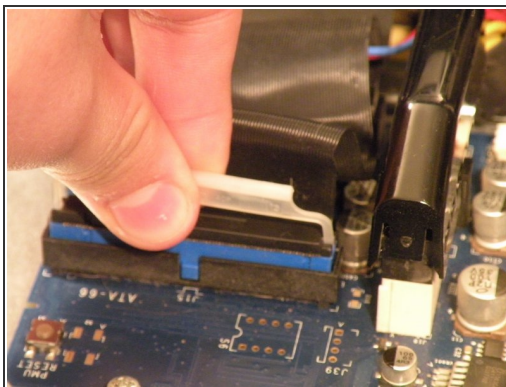
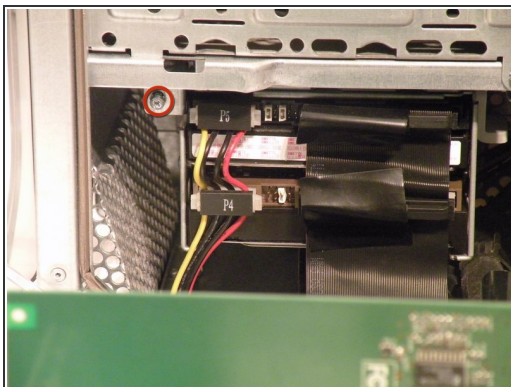
- Unplug the computer.
- Unplug the power supply and all external connections from the computer.
- Pull on the side lever and lower the side of the case.

Step 3 — Hard Drives



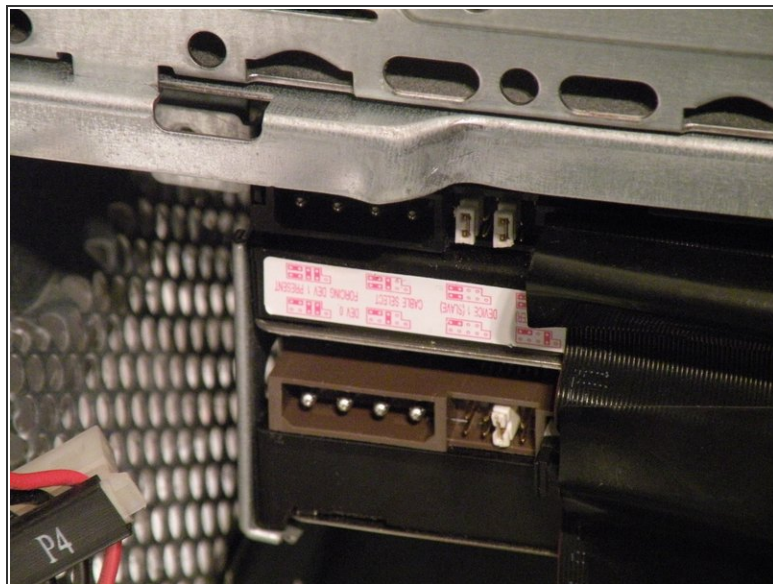
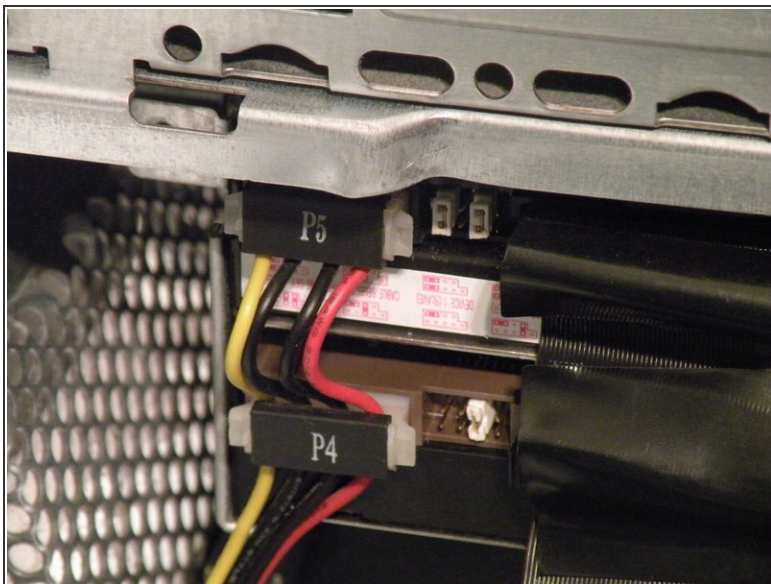
- The hard drive cages are located here.

Step 4



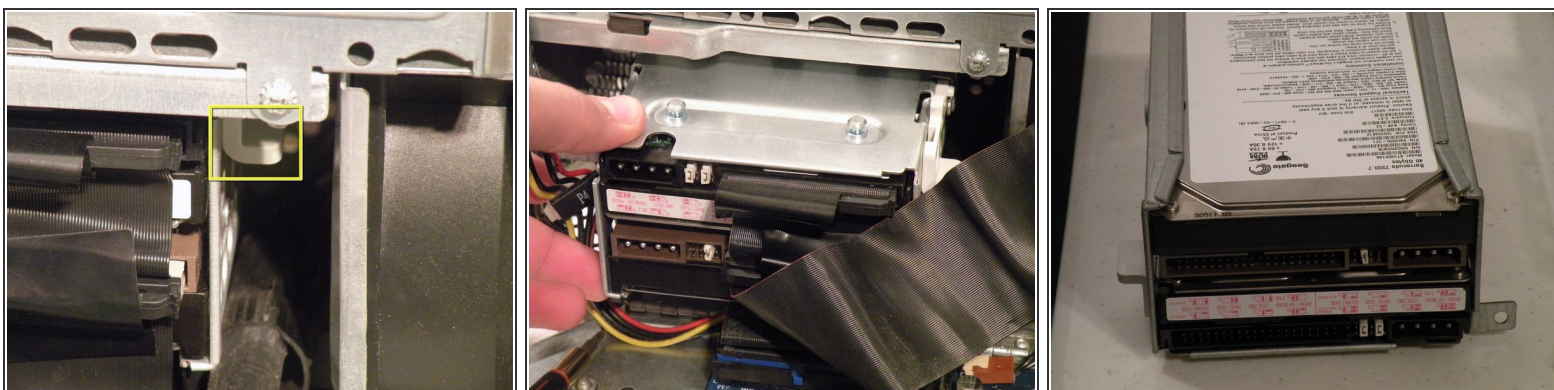
- Cage 1
- Start by removing this screw.
- Remove the ATA-66/ IDE ribbon cable from the motherboard.

Step 5



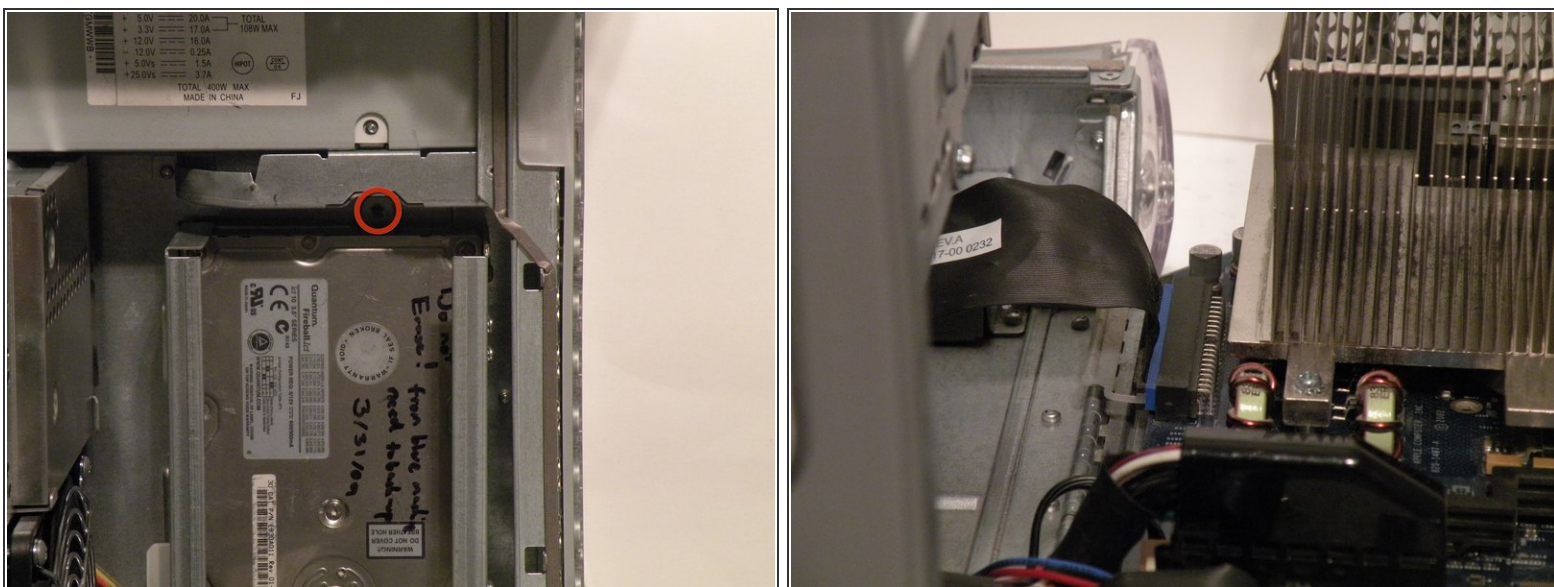
- Now, remove the power connection from the drives.

Step 6



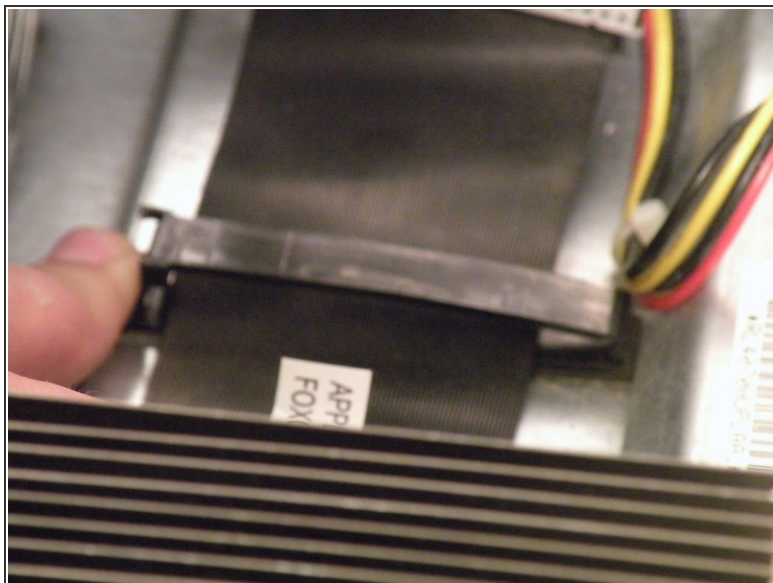
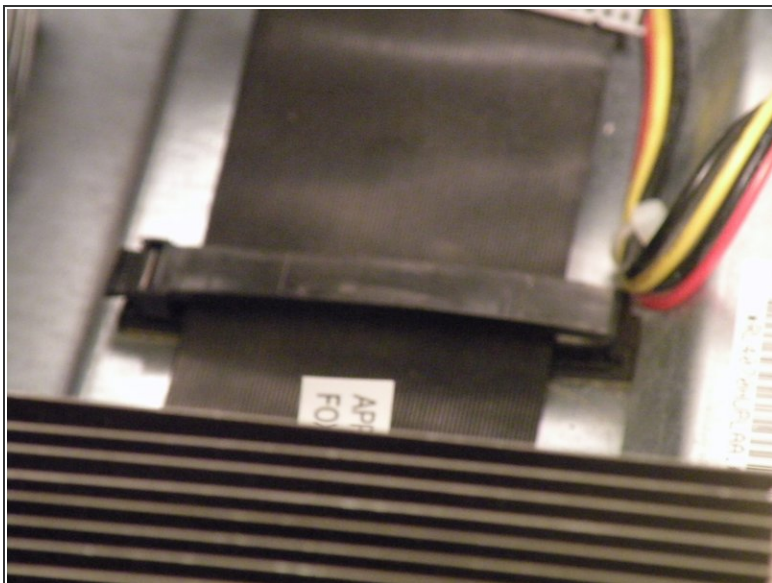
- Push this tab down, and pull the cage toward you.
- Now, you can set cage 1 aside.

Step 7



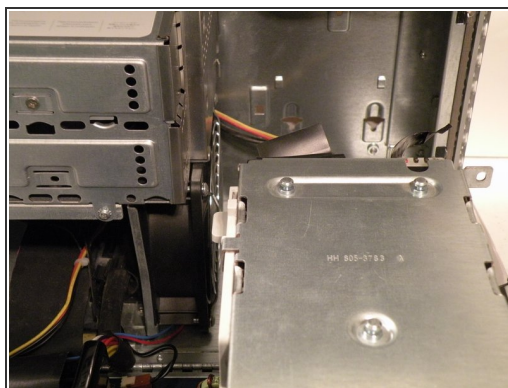
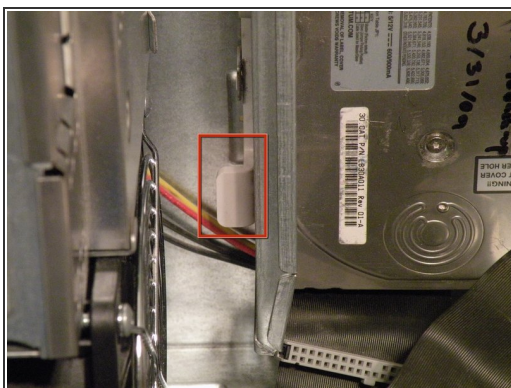
- Cage 2:
- Remove this Phillips screw:
- Disconnect this IDE ribbon cable from the logic board.

Step 8



- It's likely that there is a cable clip holding the ribbon cable to the case.
- To remove it, push the end, and it should pop up.

Step 9



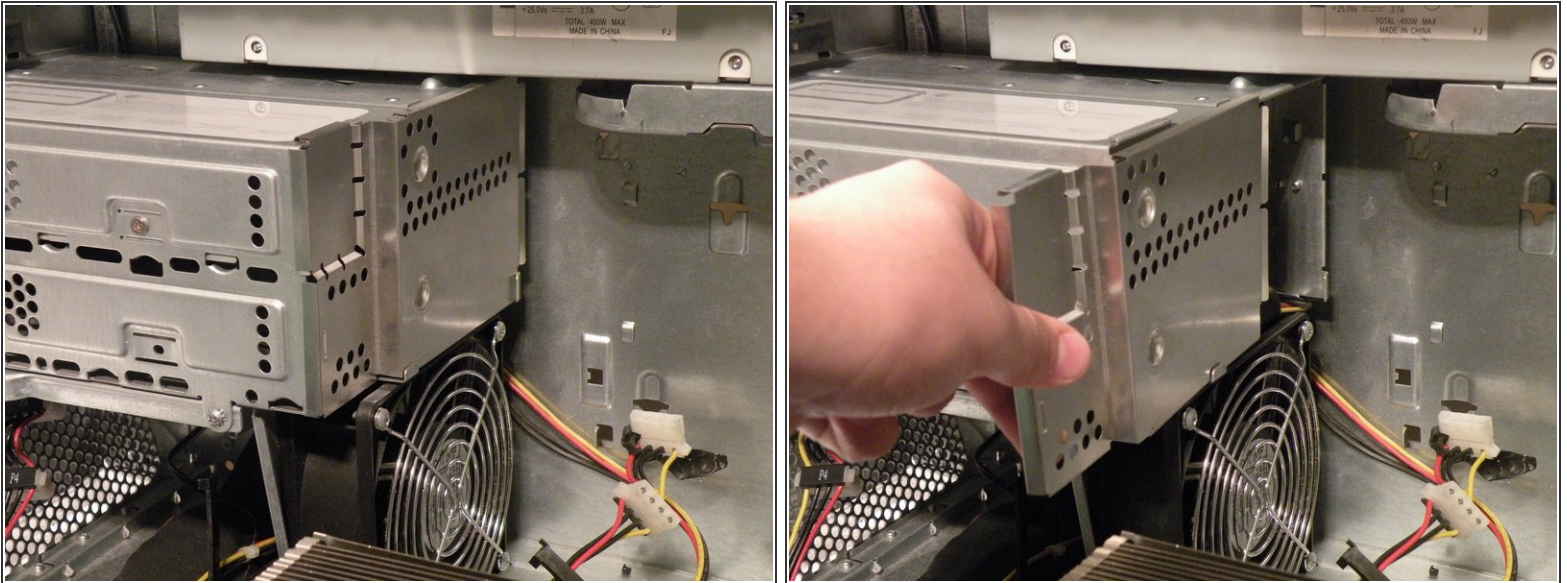
- With the ribbon cable clip free, pull this tab towards you, slide the cage up until it hits the platform under the power supply, and pull it away.
- Now, set the cage on top of the CPU, and remove the power connectors.

Step 10



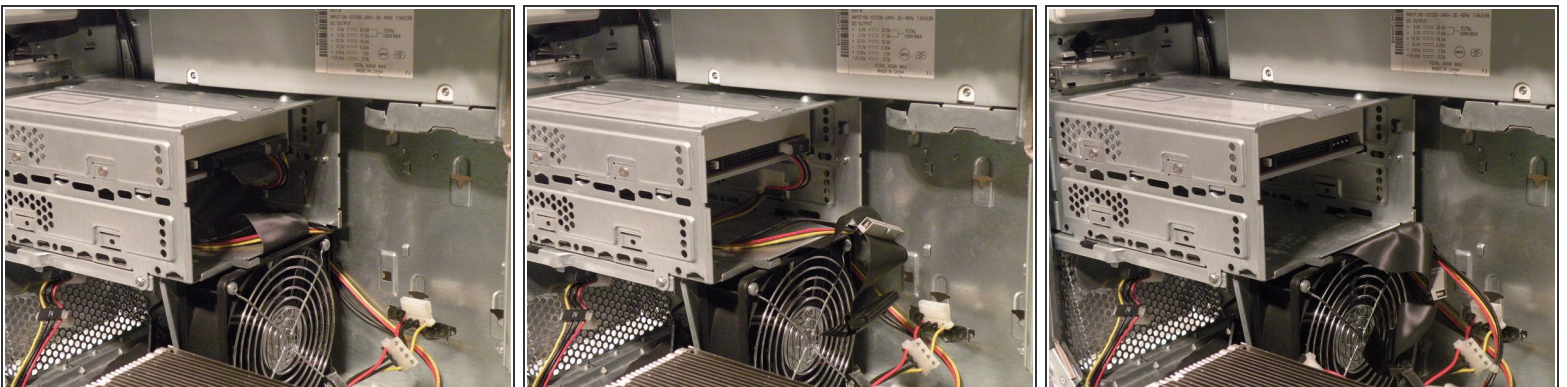
- Once the cables are free, set the drive cage aside.
- To remove the hard drives from the cages, remove the four screws on the sides of the cage that are connected to the drives, then slide the drives out.
- The two cages are cross compatible and can be put in either location.
- The MDD does not have a 128GB drive limit like older Macs. My MDD has 3 drives (a 400GB Hitachi Deskstar, 40GB Seagate Barracuda 7200.7, and a 30GB Quantum Fireball LCT).
- Note the ID jumpers on the two drive set. One is set to Master, the other to slave. A single drive can be set to Cable Select.

Step 11 — Optical Drive Cage



- Start removing the optical drive cage by removing its back cover.

Step 12



- Now, remove the IDE and power cables from the drives.

Step 13



- Remove these two Phillips screws:
- Pull the cage away from the front until it is free.
- Slide the cage towards you, and out of the Mac.

Step 14



- To remove the drive(s) from the cage, remove the two screws on each side of the drive(s), then pull the drive out of the cage.
- My MDD has a 3rd party 22X SuperDrive, for burning DVD's in Leopard (Thank You Generic Drive Support!)

To reassemble your device, follow these instructions in reverse order.