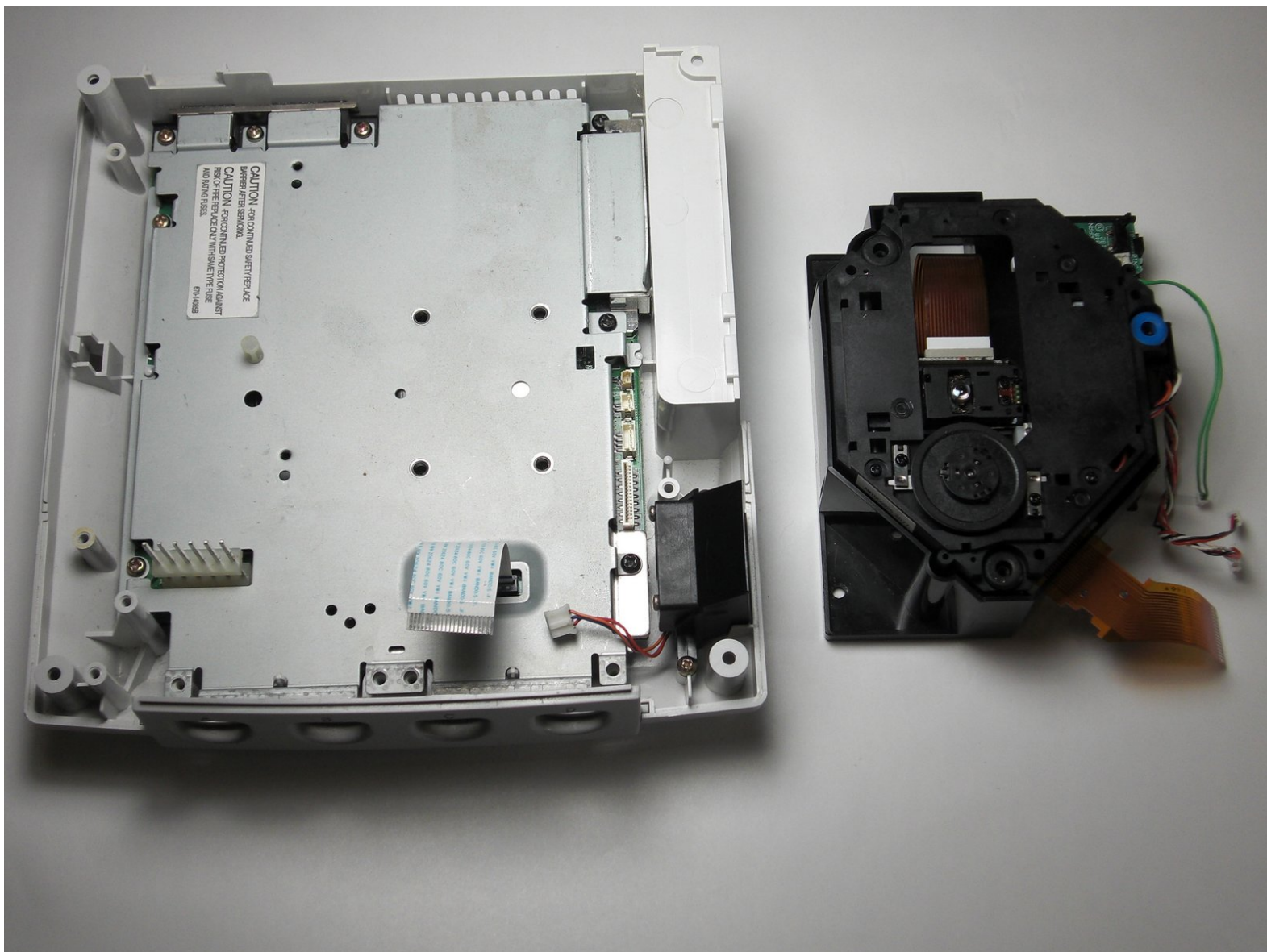




Sega Dreamcast GD-ROM Replacement

Written By: Thor686



INTRODUCTION

This guide details how to replace a failed GD-ROM drive with a new working drive.

Be sure to replace the GD-ROM with one corresponding to your model number. Refer to the [Top Cover Disassembly Guide](#) for instructions on where to find your model number.

Problem with this guide: The photos incorrectly show the power supply has been removed.



TOOLS:

- [Phillips #1 Screwdriver](#) (1)
-

Step 1 — Expansion Bay



⚠ Verify that the console is disconnected from the AC outlet before you begin.

- Flip the console over on its back.
- Take note of your model number , in case replacement parts are needed.

Step 2



- Remove the expansion bay by applying pressure to the small clip on the expansion bay while prying it away from the console.

Step 3 — Top Cover



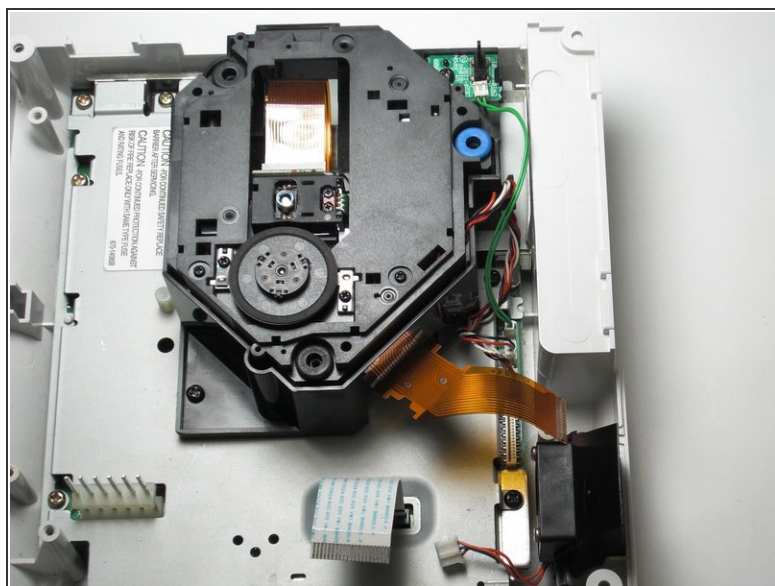
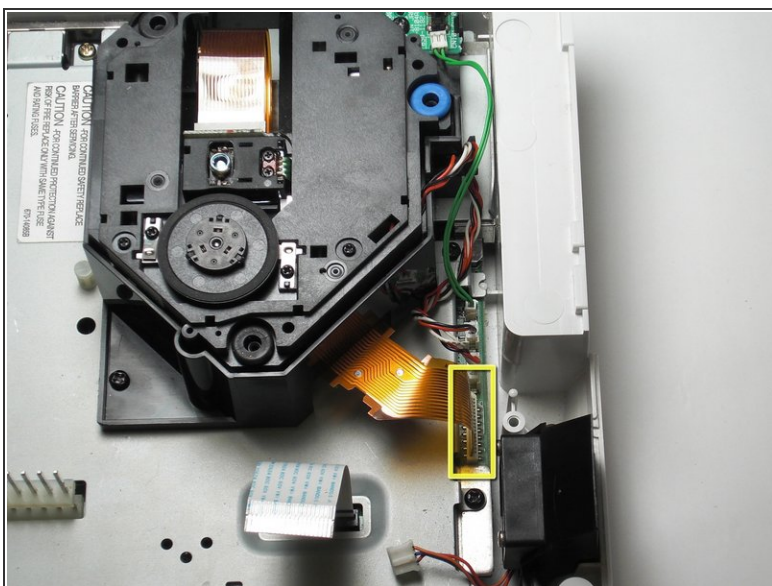
- **Locate and remove all four black 12mm Phillips #02 screws** from the underside of the console.
- ⓘ **Note:** Remove the expansion bay to locate the fourth screw

Step 4



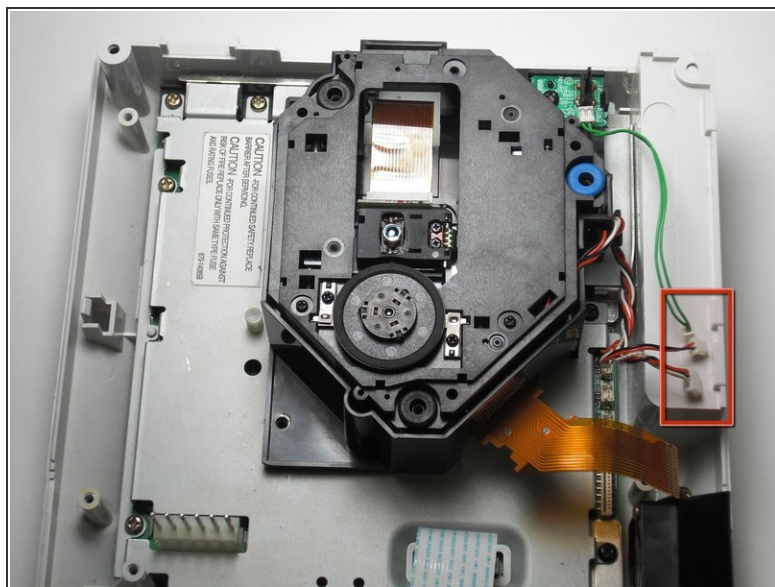
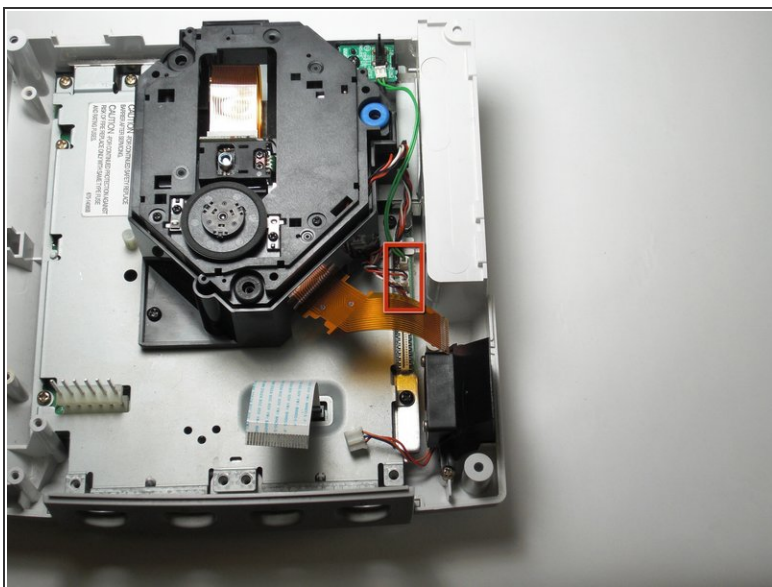
- ⚠ **Internal components can be loose.** Be careful that they do not fall out when removing the cover.
- Turn the console right side up.
- **Remove the top cover** by gently lifting the upper portion of the console.

Step 5 — GD-ROM



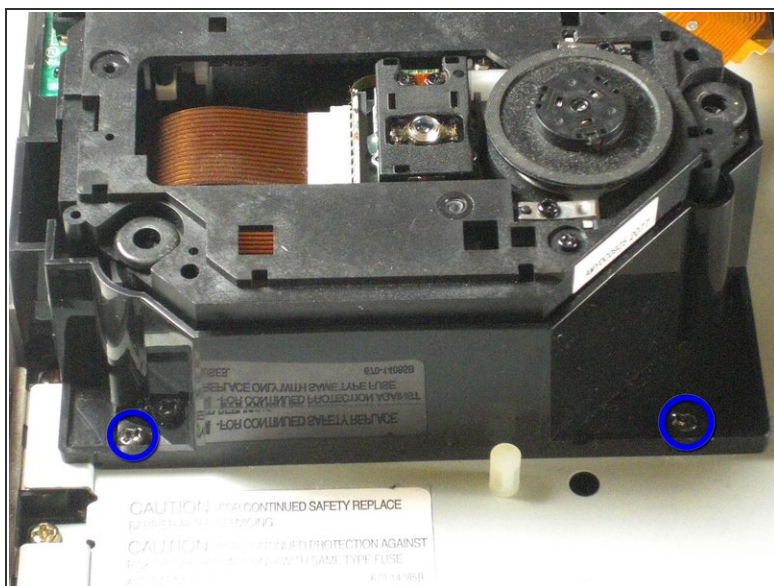
- **Detach the orange cable** by giving it a gentle pull while wiggling the cable back and forth until it loosens from the logic board.

Step 6



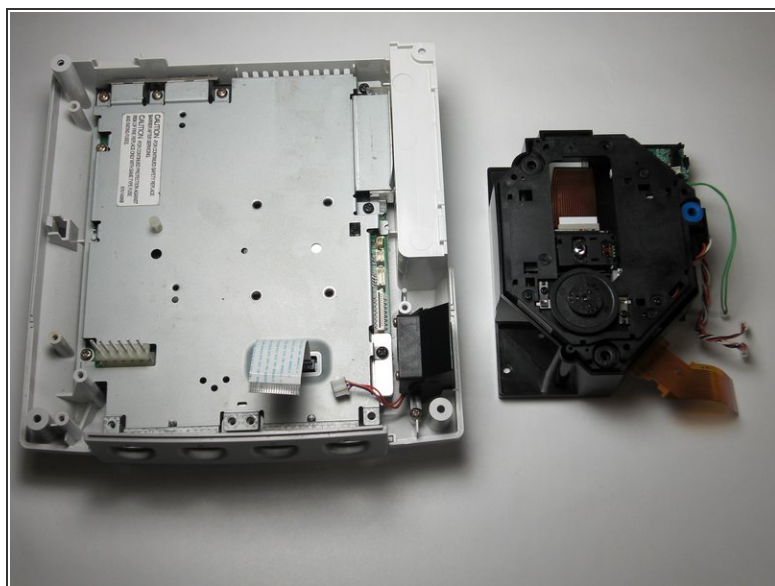
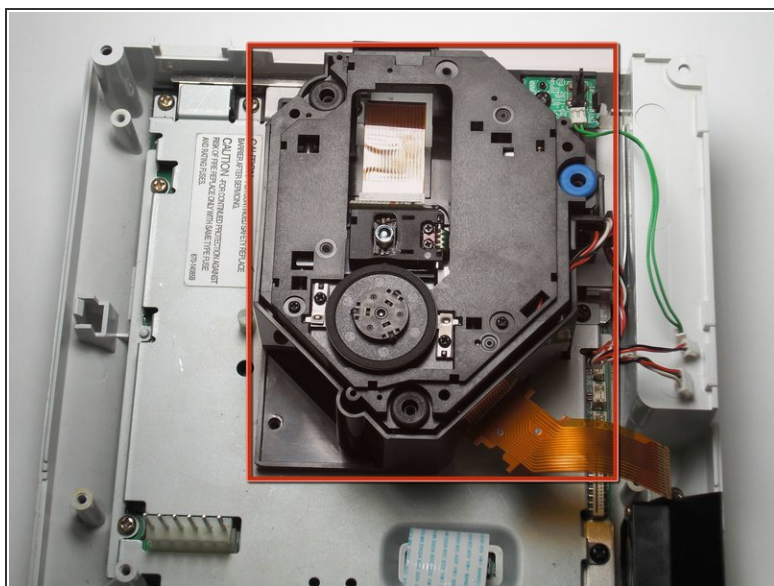
- **Detach the cables** by gently pulling the three GD-ROM cables to remove them from the logic board.

Step 7



- **Remove the two black 12mm Philips #02 screws** located on the left side of the GD-ROM bracket.
- ⓘ The console is rotated 90 degrees counter-clockwise in the first photo. The second photo depicts the normal position.

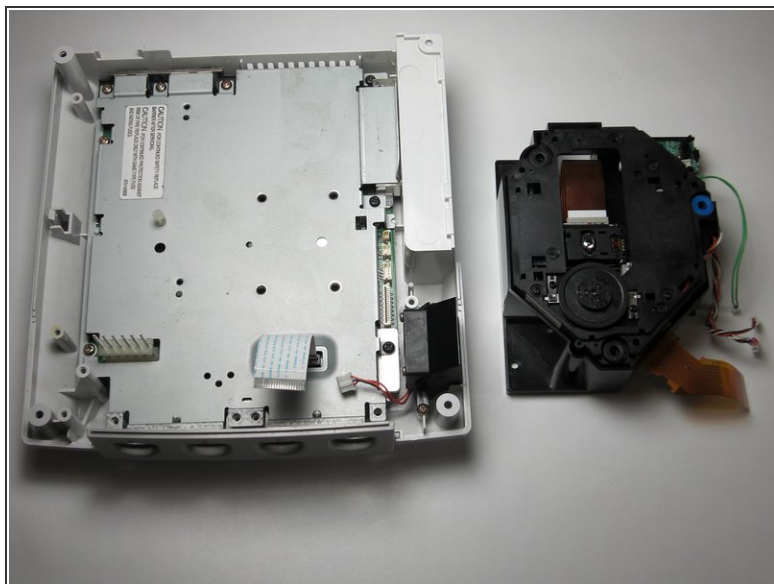
Step 8



⚠ When lifting the GD-ROM, be careful that the top half of the casing does not detached from its base.

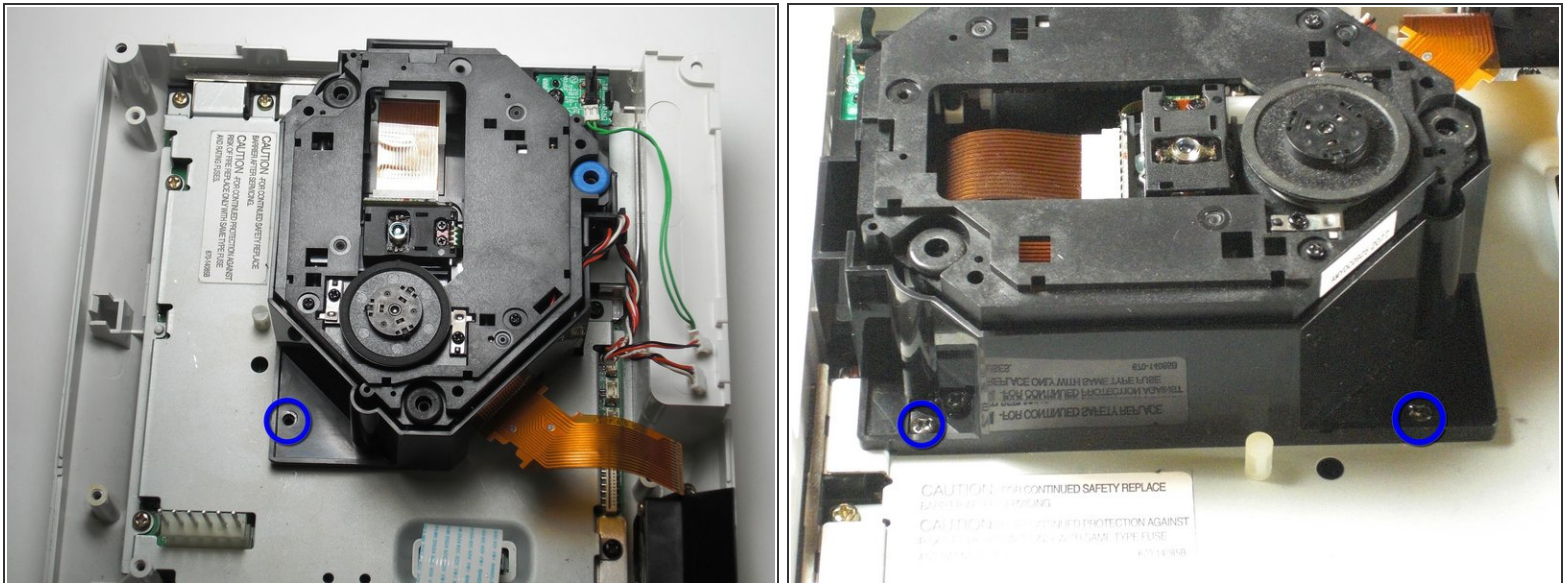
- **Remove the GD-ROM** by gently lifting it from its base.

Step 9 — GD-ROM



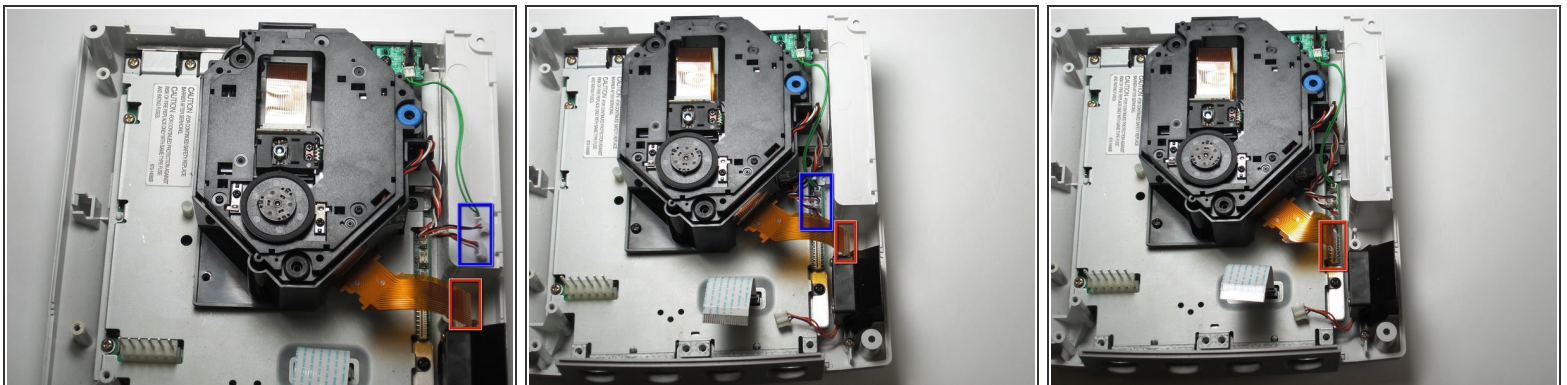
- **Replace the bad GD-ROM** drive with a functional one.

Step 10



- Secure the new GD-ROM drive to the console with the Philips #2 screws.

Step 11



- Connect the three GD-ROM cables to the logic board.
- Connect the GD-ROM data ribbon to the logic board.