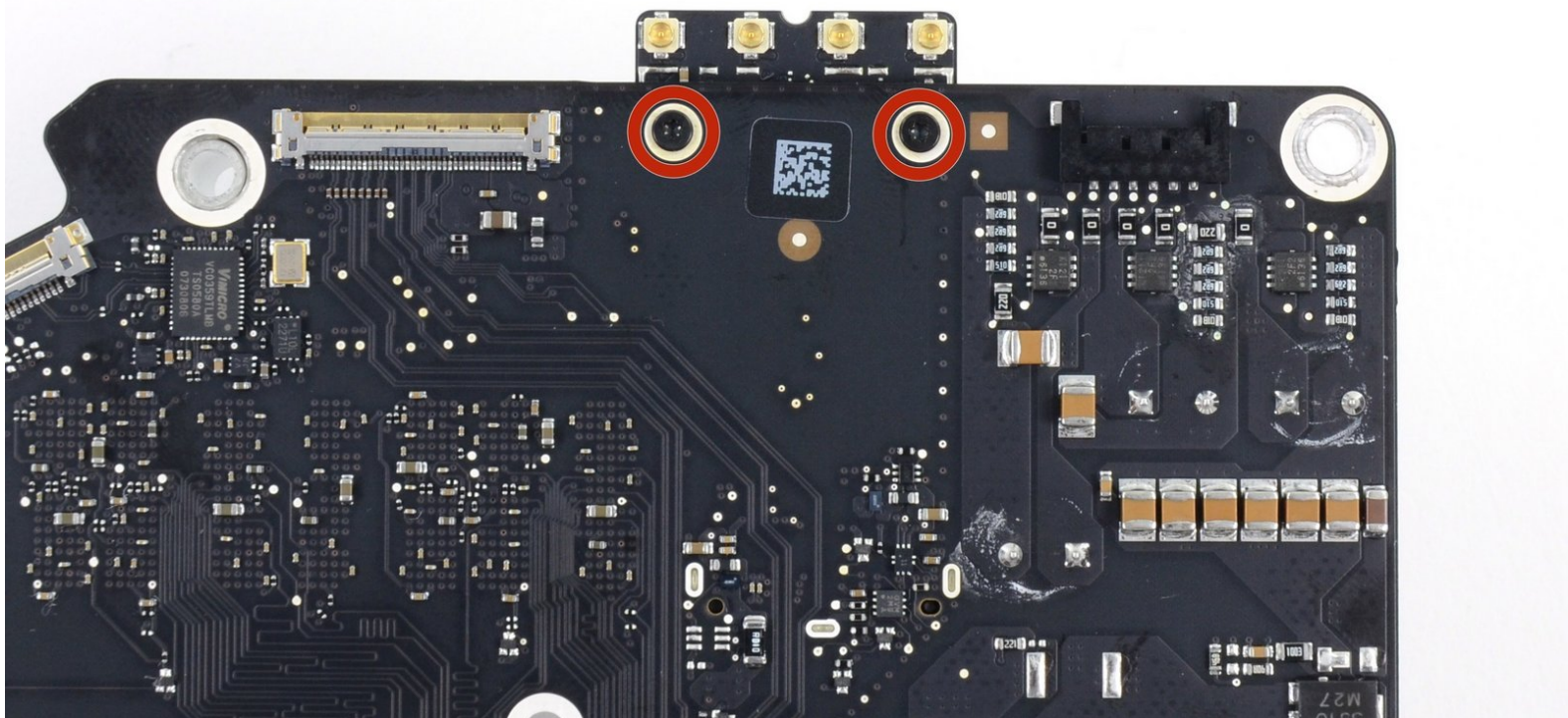




iMac Intel 27" EMC 2546 AirPort/Bluetooth Card Replacement

prerequisite for logic board—after heat sink and RAM, before SSD

Written By: Andrew Optimus Goldheart

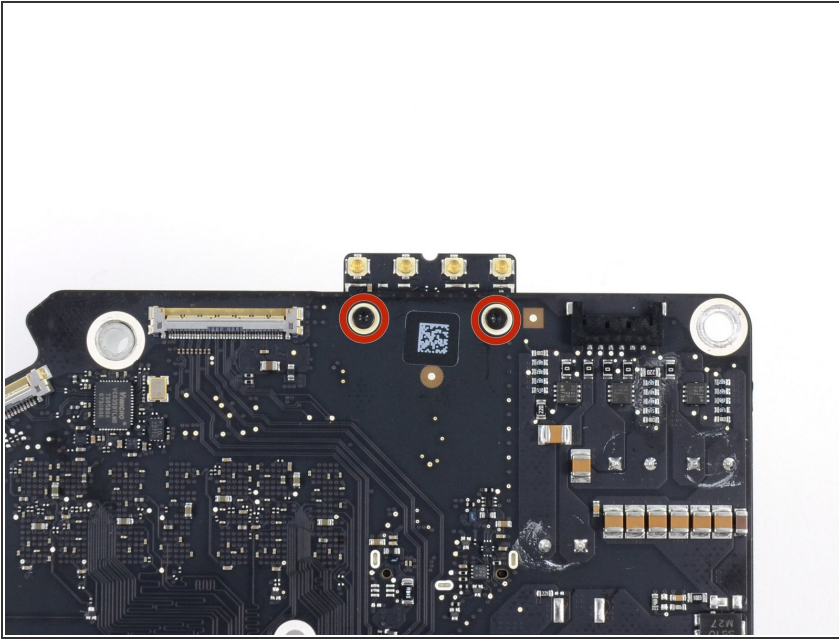




TOOLS:

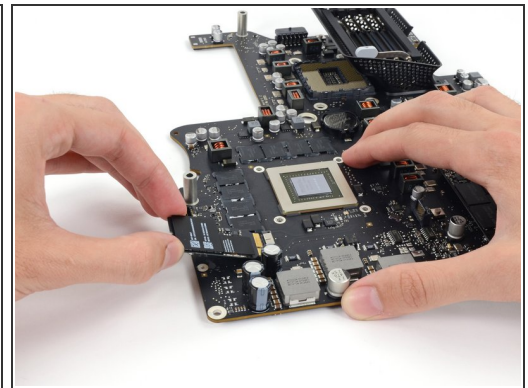
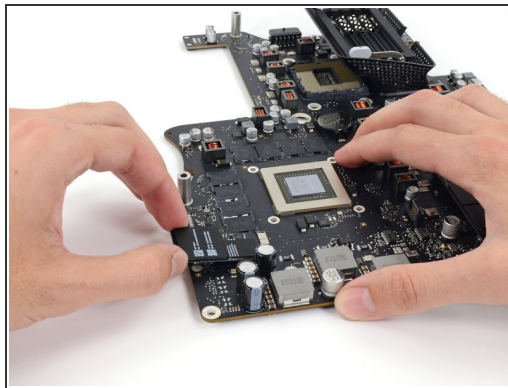
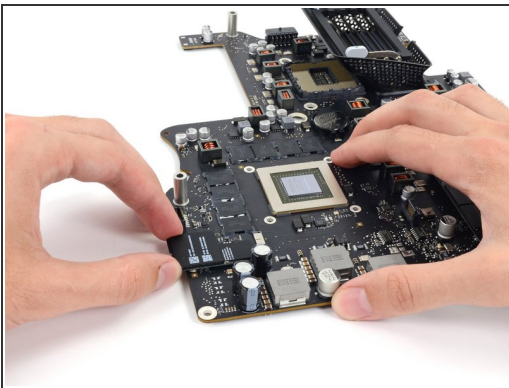
- [T5 Torx Screwdriver](#) (1)
-


Step 1 — AirPort/Bluetooth Card



- Remove two 3.7 mm T5 screws from the back of the logic board.

Step 2



 To avoid damaging its socket, do not lift the end of the AirPort/Bluetooth Card excessively.

- Lift the end of the AirPort/Bluetooth Card up slightly and pull it straight out of its socket on the logic board.

 When reinstalling the card, be sure it is properly seated before reinstalling its retaining screw.

To reassemble your device, follow these instructions in reverse order.