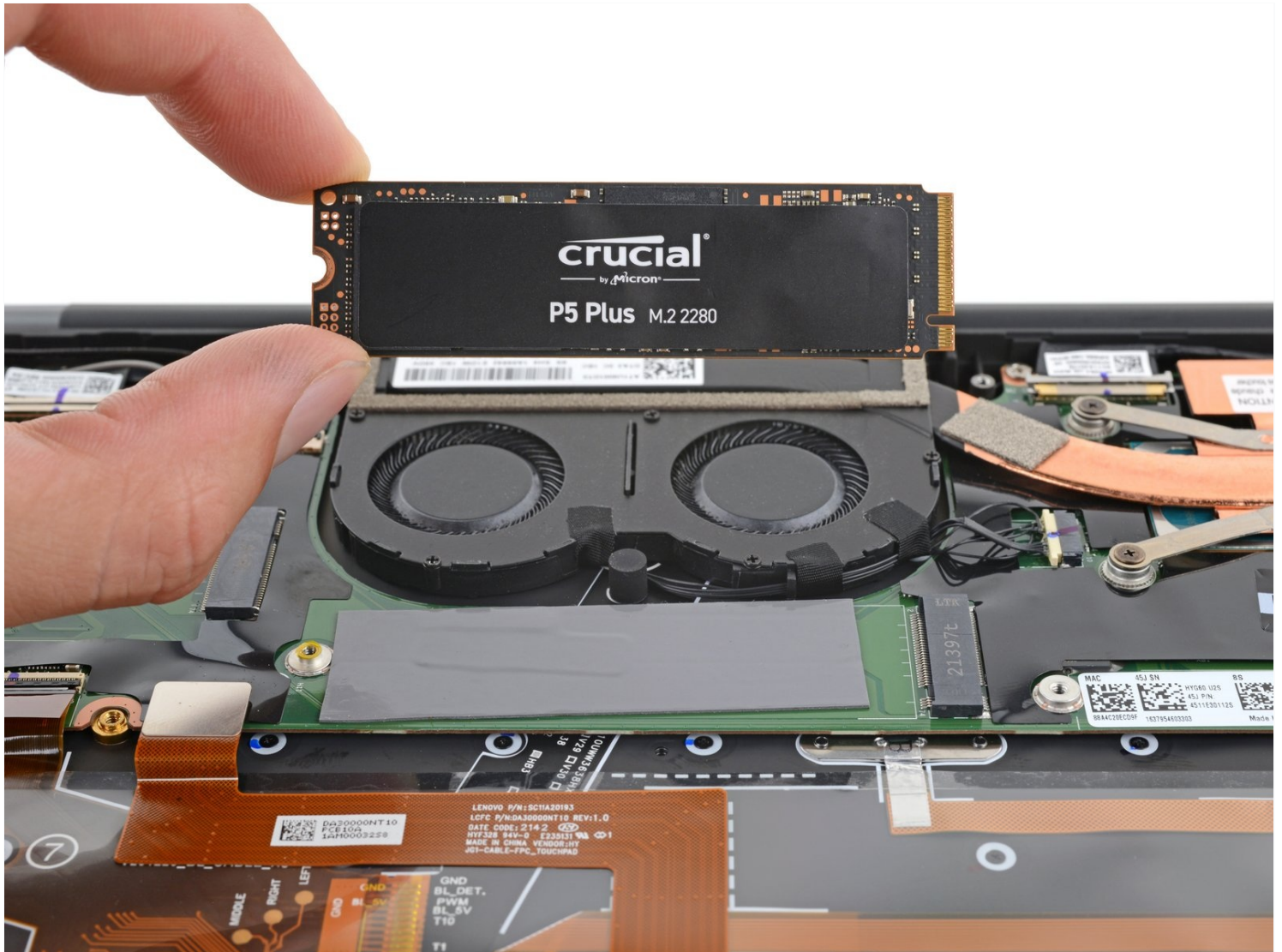




Replacement

Use this guide to remove and replace the Solid...

Written By: Clay Eickemeyer



INTRODUCTION

Use this guide to remove and replace the Solid State Drive (SSD) in your Lenovo ThinkPad X1.

Before you perform this repair, back up your existing SSD if possible. If you're replacing the SSD where your operating system is installed, familiarize yourself with a disk cloning utility so you'll be ready to migrate your data to the new SSD.

TOOLS:

Phillips #1 Screwdriver (1)
iFixit Opening Picks (Set of 6) (1)

PARTS:

Crucial P3 NVMe PCIe M.2 2280SS SSD (1)
Crucial P3 Plus NVMe PCIe M.2 2280SS SSD (1)
Crucial P5 Plus PCIe M.2 2280SS SSD (1)

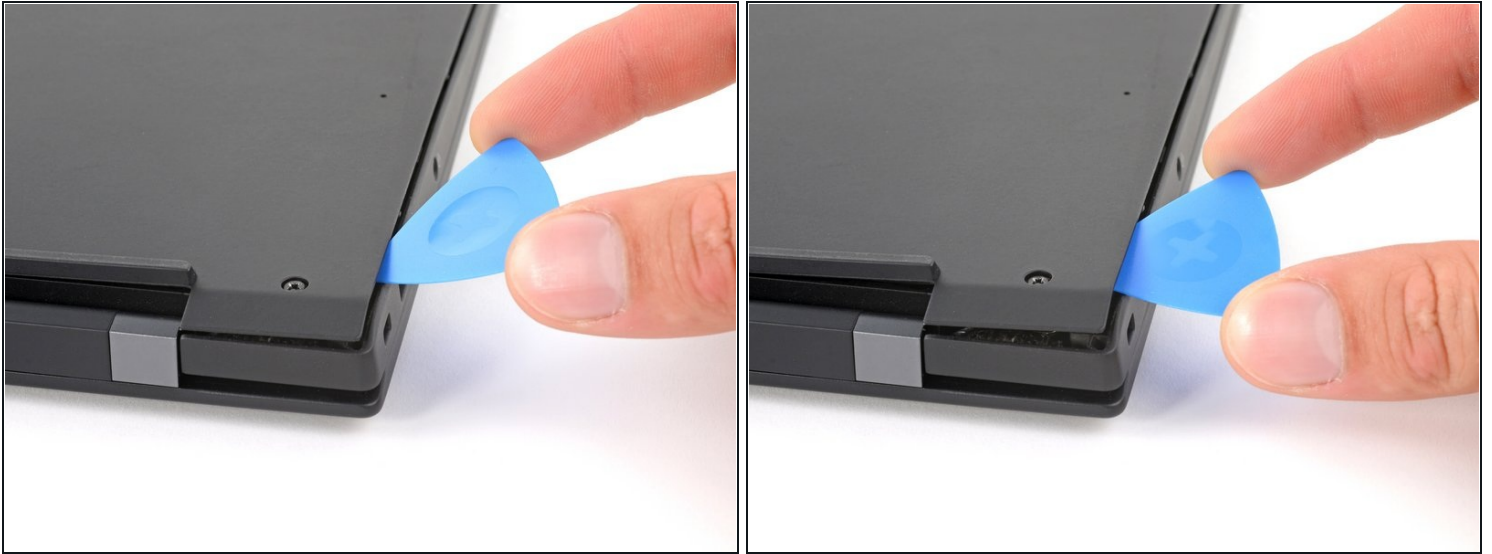
Step 1 — Unfasten the back cover



 For your safety, discharge the battery below 25% and power down your device before disassembly.

- Use a Phillips #1 screwdriver to loosen the five captive screws holding the back cover.

Step 2 — Release the corner clips



- Insert an opening pick between a corner of the back cover and the chassis, near a hinge.
- Pry upward to release the retaining clips.
 - ① Listen for a click sound when clips release.
- Repeat this process for the opposite corner.

Step 3 — Release the edge clips



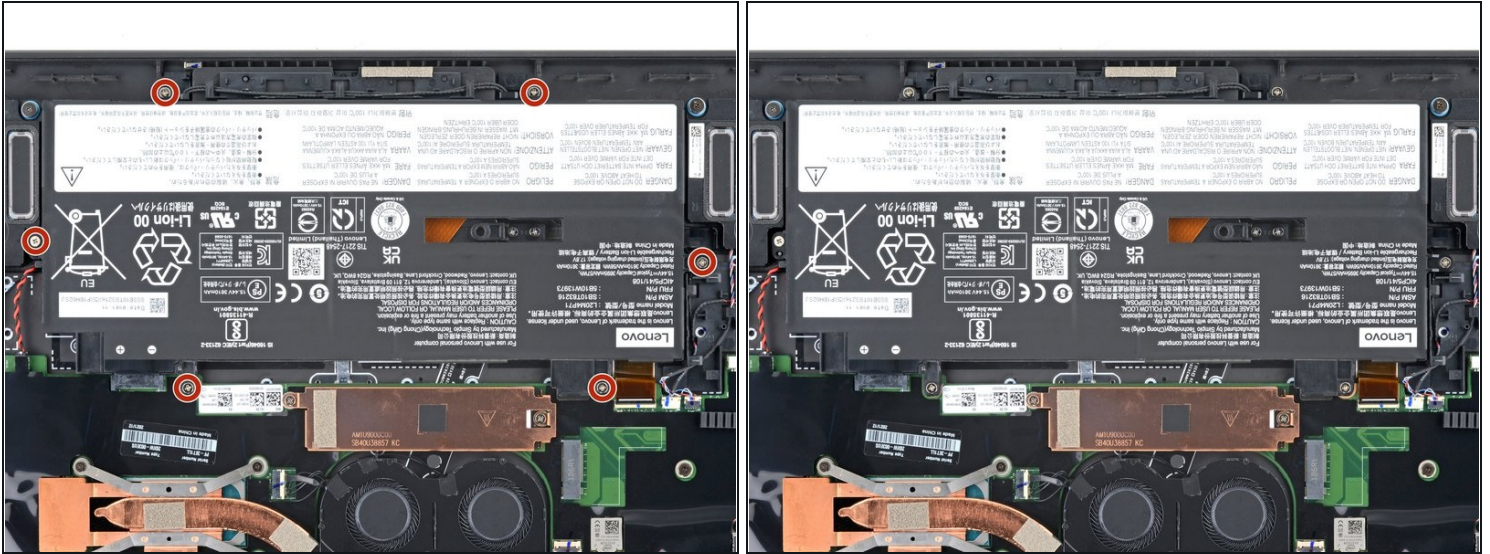
- Insert the opening pick between the cover and the body.
- Pry upward and release all of the retaining clips.

Step 4 — Remove the back cover



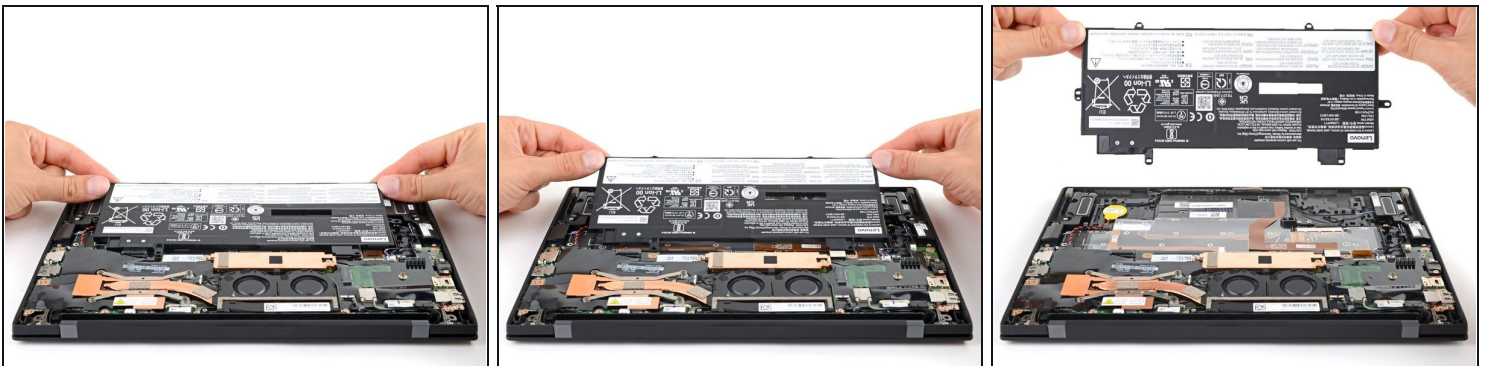
- Lift the back cover off the chassis and remove it.
 - ① If the cover feels stuck to the chassis, use an opening pick to release any remaining clips around the perimeter of the back cover.

Step 5 — Unfasten the battery



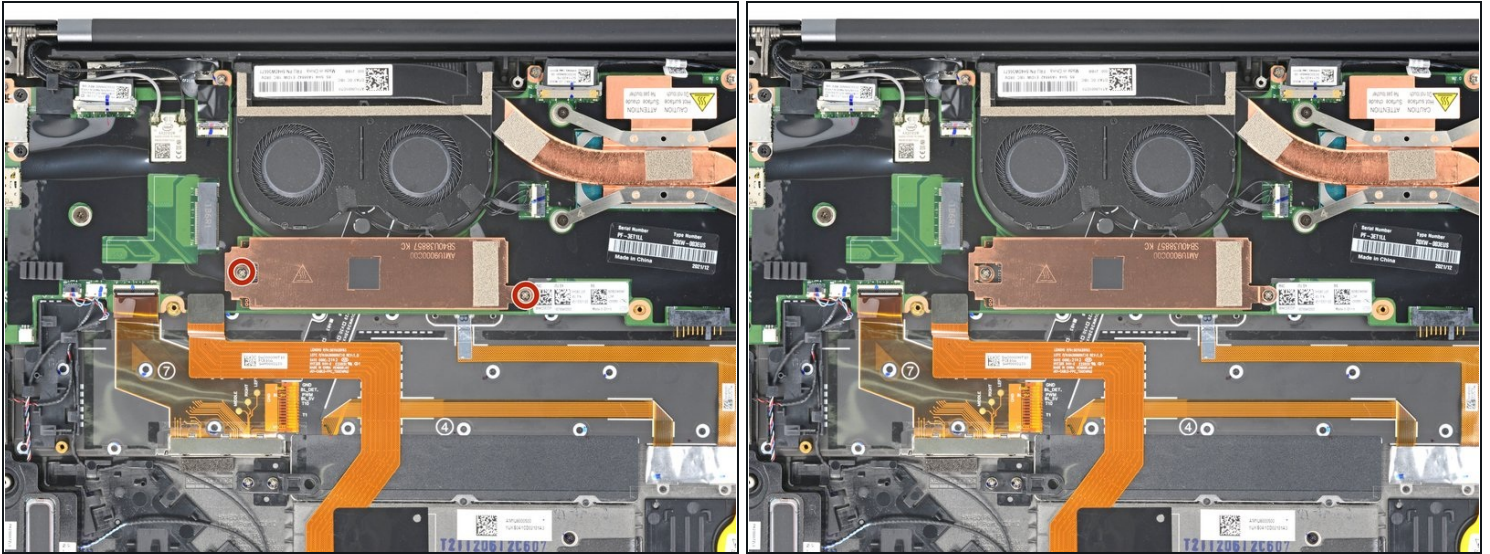
- Use a Phillips #1 screwdriver to remove the six 4.9 mm screws securing the battery to the laptop chassis.

Step 6 — Remove the battery



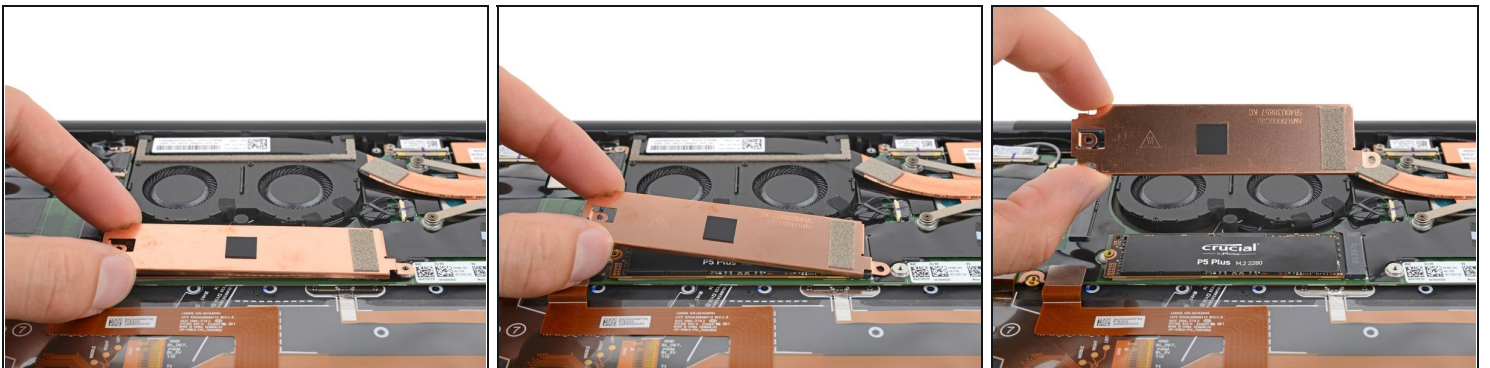
- Grip the corners of the battery.
- Pull and lift the battery of its recess and remove it.
 - ① Be delicate when pulling the battery out at first. The small pins on its connector are easy to bend.
 - ① There is no cable for the battery. It disconnects when removed from its recess.

Step 7 — Unfasten the SSD cover



- Use your Phillips screwdriver to remove the two 3.5 mm screws holding the metal SSD cover.

Step 8 — Remove the SSD cover



- Lift the SSD cover off the SSD and remove it.

Step 9 — Remove the SSD



- Grip the edges of the SSD near the screw indent.
 - Pull the SSD straight out of its socket and remove it.
 - ❗ If the SSD feels stuck, gently wiggle it side to side as you pull.
 - ☑ Retain the original thermal pad on the laptop, or [refer to the general SSD installation guide](#) for how to replace it.
-

To reassemble your device, follow these instructions in reverse order.

Take your e-waste to an [R2 or e-Stewards certified recycler](#).

Repair didn't go as planned? Try some [basic troubleshooting](#), or ask our [Lenovo ThinkPad X1 Carbon community](#) for help.