



# Disassembling SanDisk Sansa Fuze

Here is a teardown of SanDisk Sansa Fuze, also with instructions on how to replace the battery

Written By: James





## TOOLS:

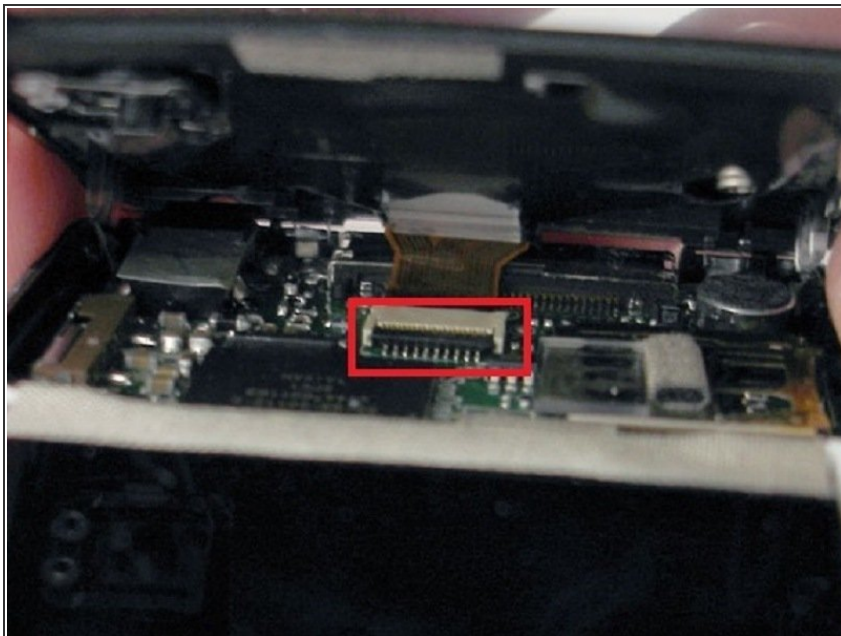
- [iFixit Opening Tools](#) (1)
  - [Phillips #0 Screwdriver](#) (1)
  - [Soldering Iron](#) (1)
-

## Step 1 — Sansa Fuze MP3 Player



- Pry open and pop the clips. Note that the bottom two clips are held in with a little bit of rubbery glue. Don't rip the face off too quick since there is a ribbon cable you need to disconnect.

## Step 2



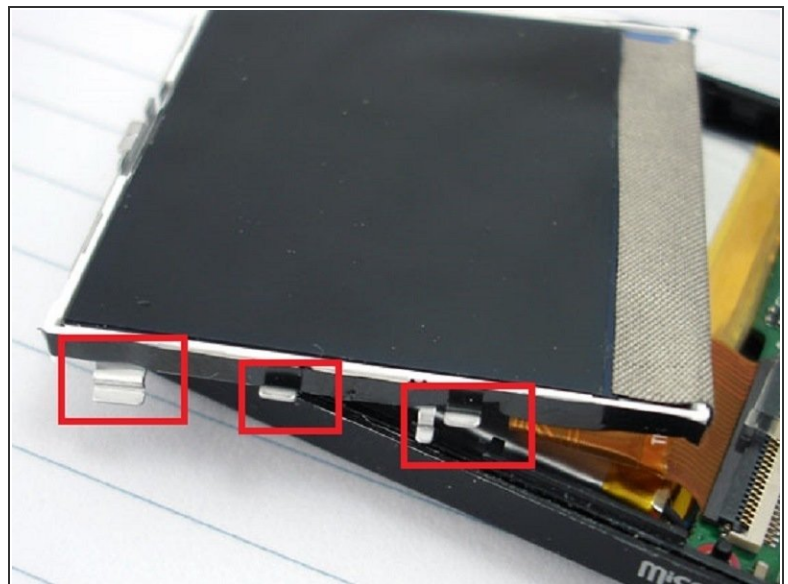
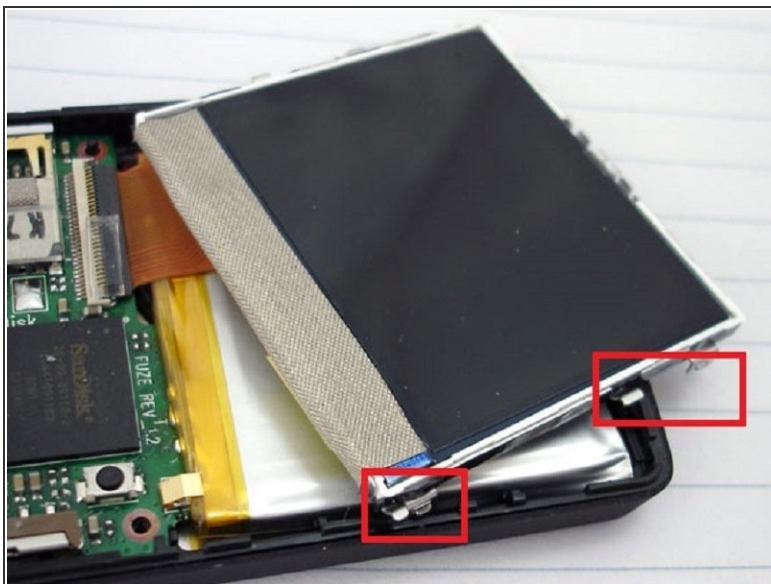
- Remove ribbon cable connect to the face plate. Lift the face off and flip the brown ribbon release flap on the connection on the board. (The flap in this picture is black, opposite the cable. Lift the edge that is closest to you in the picture in order to release the cable.)

### Step 3



- Remove two (in some versions there are 3) screws holding the board down

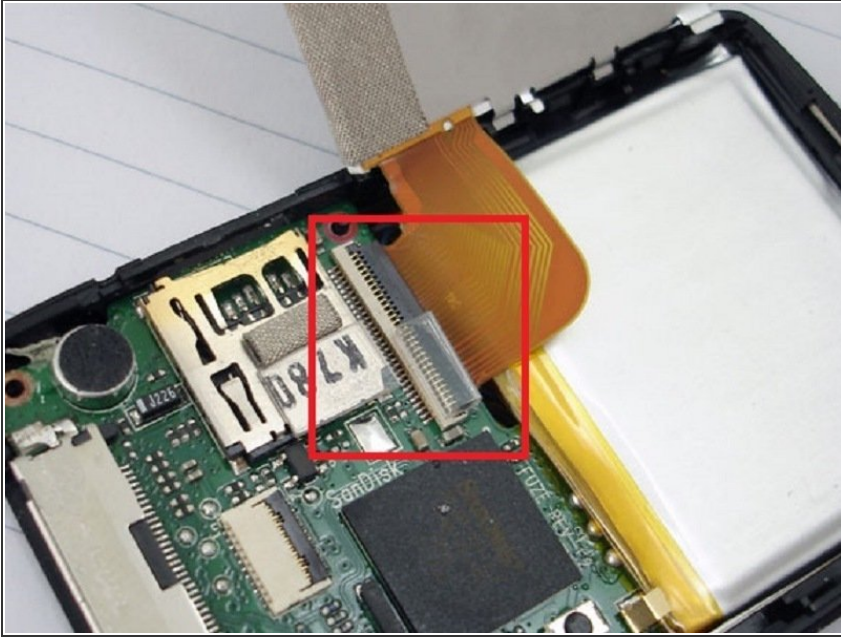
### Step 4



- Remove LCD by releasing the 4 clips on each side of the LCD, be carefully to not damage the LCD

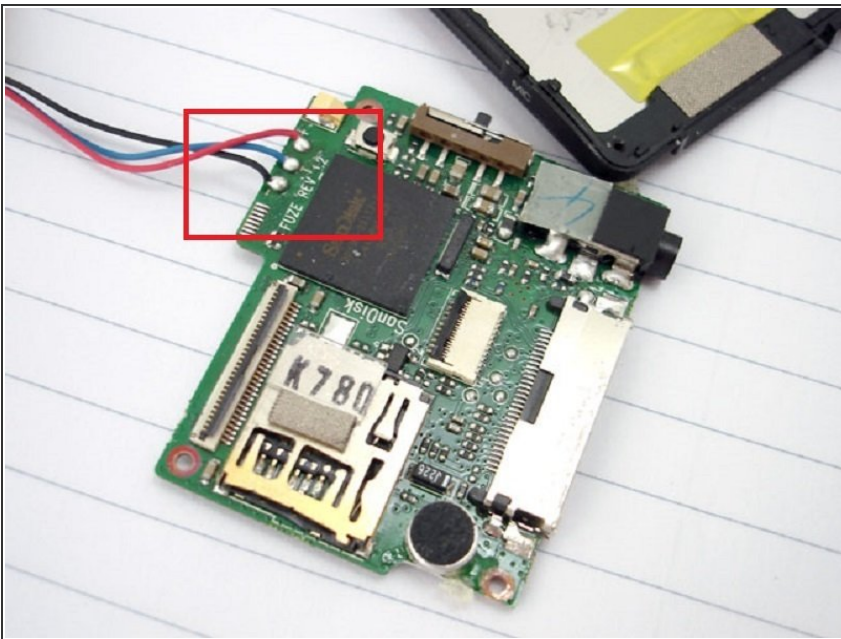


## Step 5



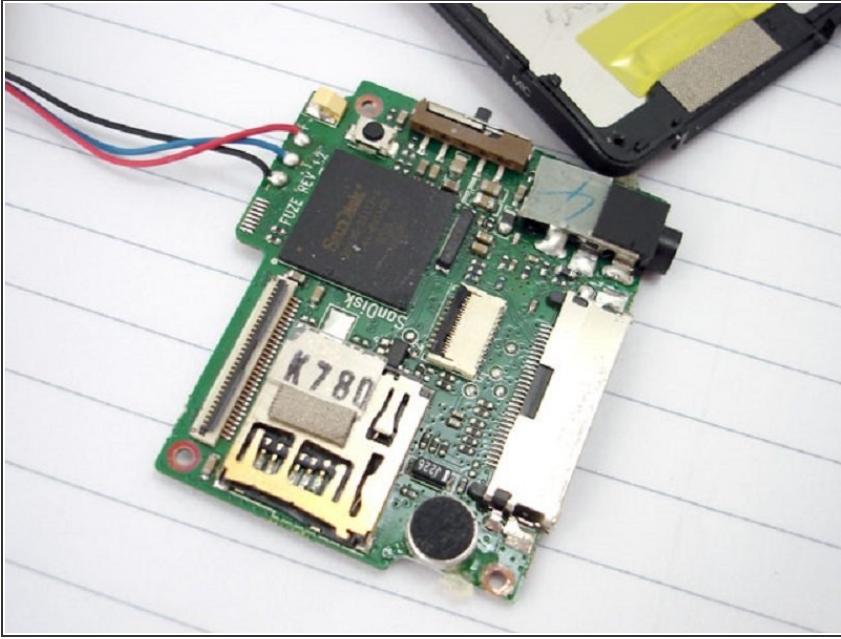
- Carefully flip the LCD over and disconnect the LCD cable from the board

## Step 6



- Remove battery. The battery is taped down with a little double sided tape
- If you are replacing the battery just apply a soldering iron to the battery connections on the board and gently pull them off..
- To re-attached the new battery by reheating the old solder and reconnecting the new battery wires
- Link to a battery [Battery Clerk - Sansa Fuze battery](#)
- PLEASE NOT IF REPLACING THE BATTERY YOU DO NOT NEED TO REMOVE THE BOARD :)

## Step 7



- Remove the board by lifting on the left side first as to work around the on off switch.

To reassemble your device, follow these instructions in reverse order.