



How to Fix/Prevent Joystick Drift on a DualShock 3

Written By: Rohan Bangash



INTRODUCTION

The purpose of this guide is to fix/prevent joystick drift in your PS3 DualShock controller. This guide will show you step by step, how you can remove the dust and dirt particles which are trapped deep within your controller and may be the cause for your joysticks not functioning properly.

Keep in mind this guide is more of a cleaning/maintenance guide, and may not be able to resolve hardware failure. Following this guide will definitely help keep your PS3 controller clean and greatly lower the chance of getting that frustrating joystick drift which ruins your gaming experience.



TOOLS:

- [Phillips #1 Screwdriver](#) (1)
 - [Cotton Swabs](#) (1)
 - [Toothpick](#) (1)
-

Step 1 — How to Fix/Prevent Joystick Drift on a DualShock 3



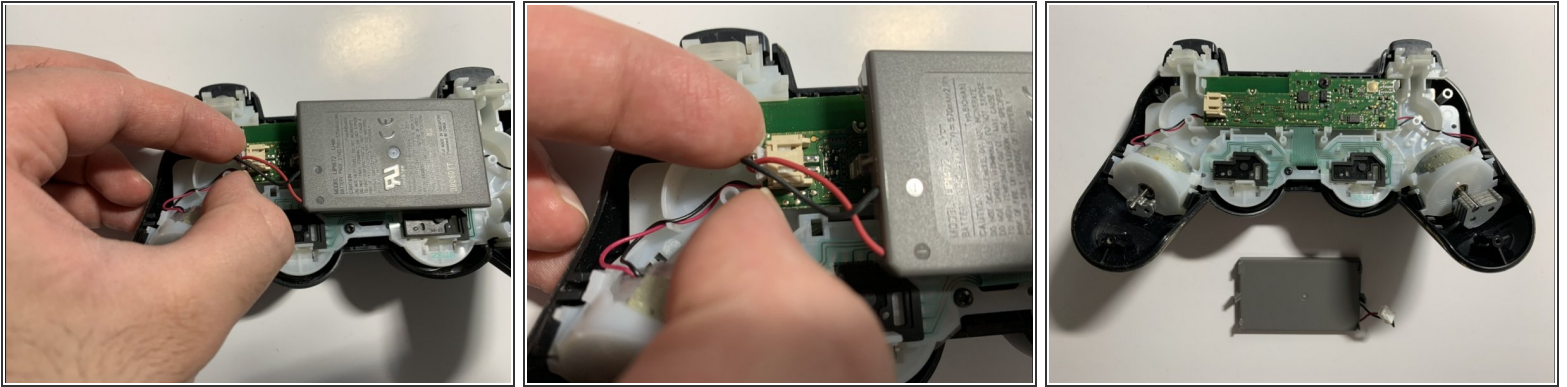
- Use a Phillips #1 screwdriver to remove the five 7.2 mm Phillips screws which hold the back shell to the controller.

Step 2



- Remove the back shell from the controller by pulling the front and back shells apart at the same time.

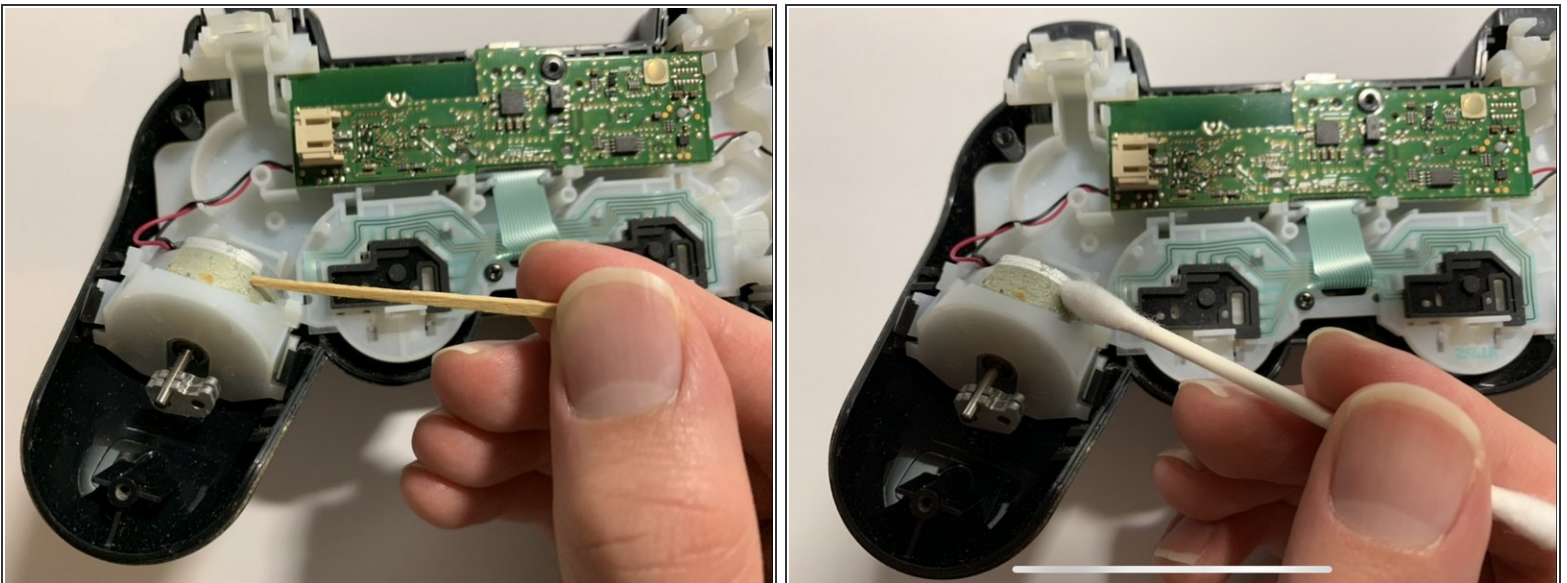
Step 3



- Disconnect the battery from the controller by pressing the two sides of the connector and pulling it out.

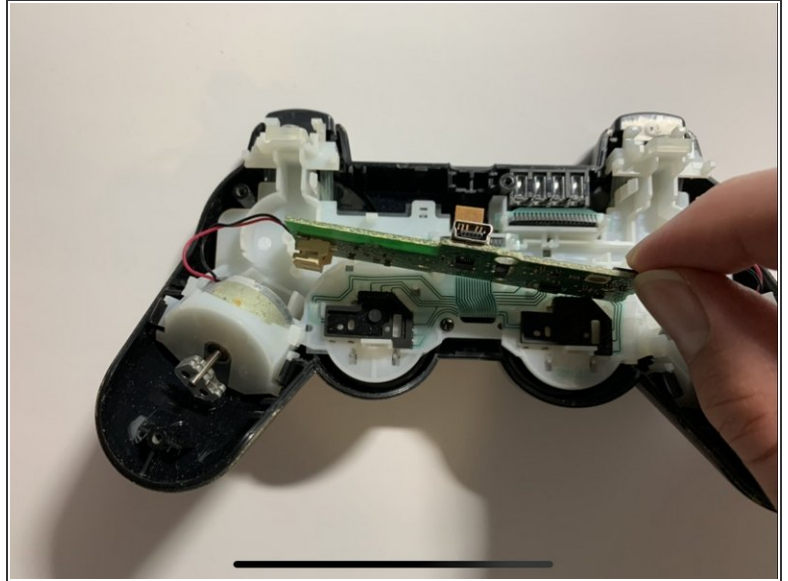
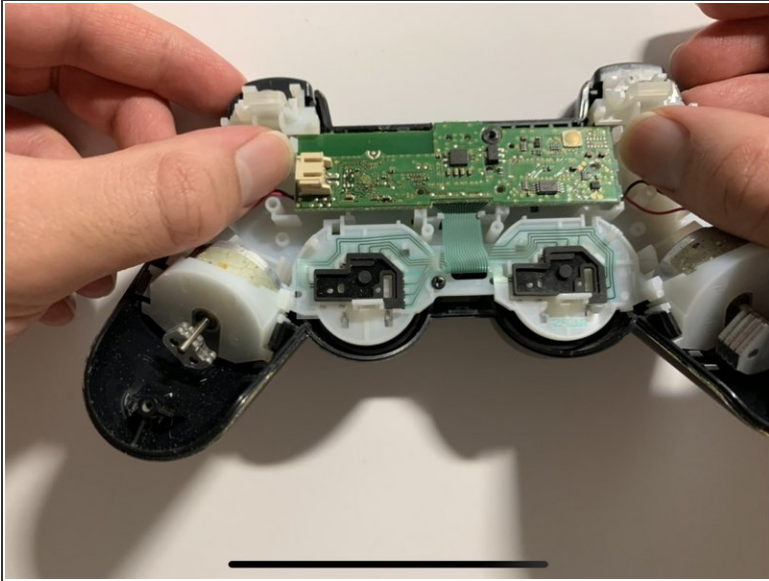
⚠ Do not pull on the red and black wires to avoid damaging the connection.

Step 4



- Use a toothpick to remove any sticky dirt like substances from the rumble motors.
- Use the cotton swab to remove any dust particles or hairs from the rumble motors.

Step 5



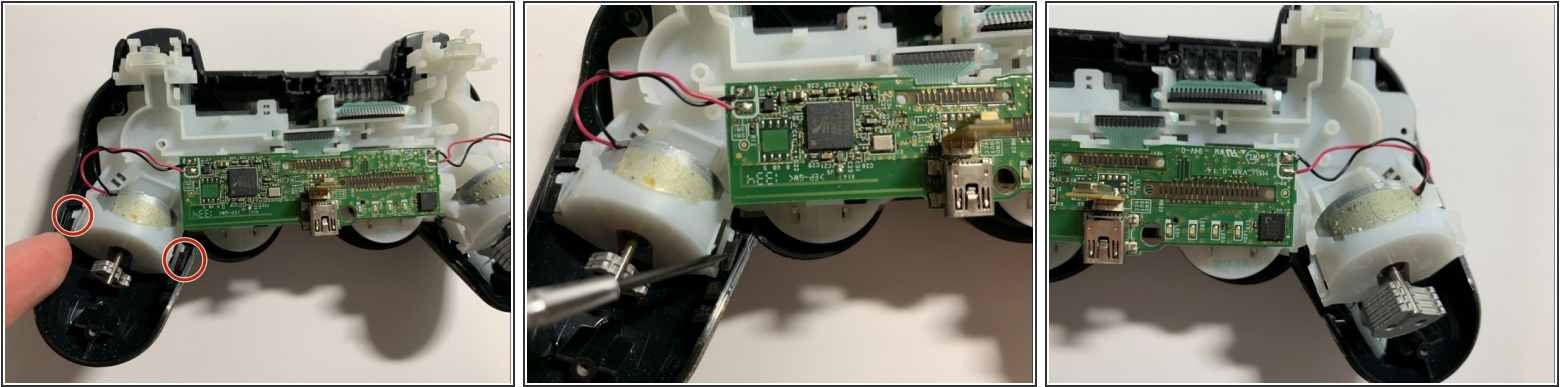
- Remove the motherboard by pushing the two white hooks on both the left and right side of the motherboard backwards.

Step 6



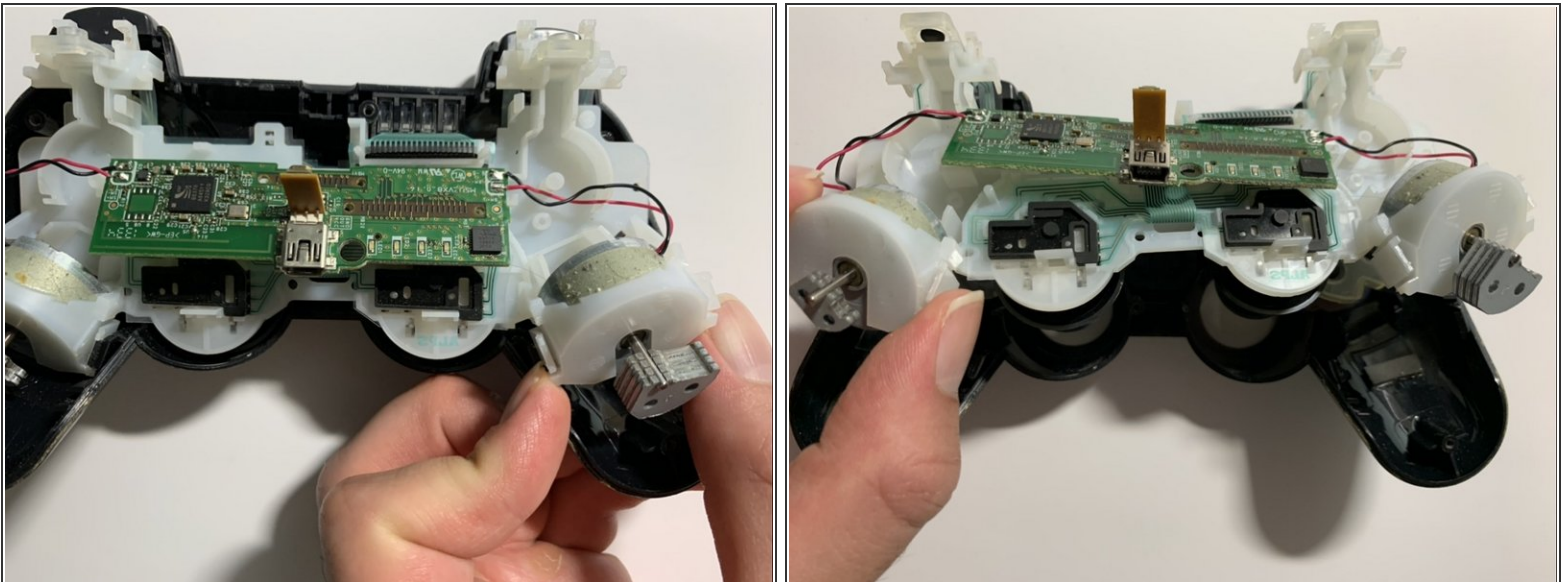
- Use a Phillips #1 screwdriver to remove the single 7.2 mm screw, which secures the white body piece inside the controller.

Step 7



- To remove the white body piece, start by using your fingers to unhook the small black hooks securing the left and right rumble motors.

Step 8



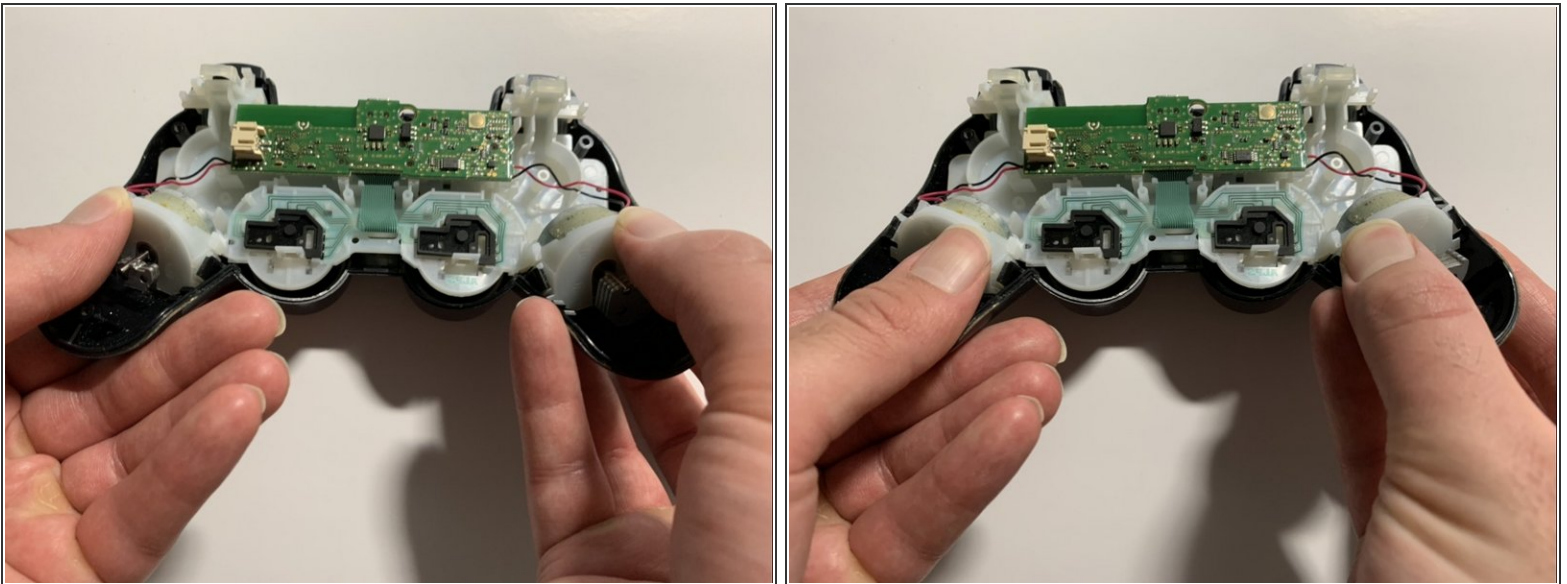
- Remove the white body piece from the controller by pushing the unhooked left and right rumble motors in an upward direction.

Step 9



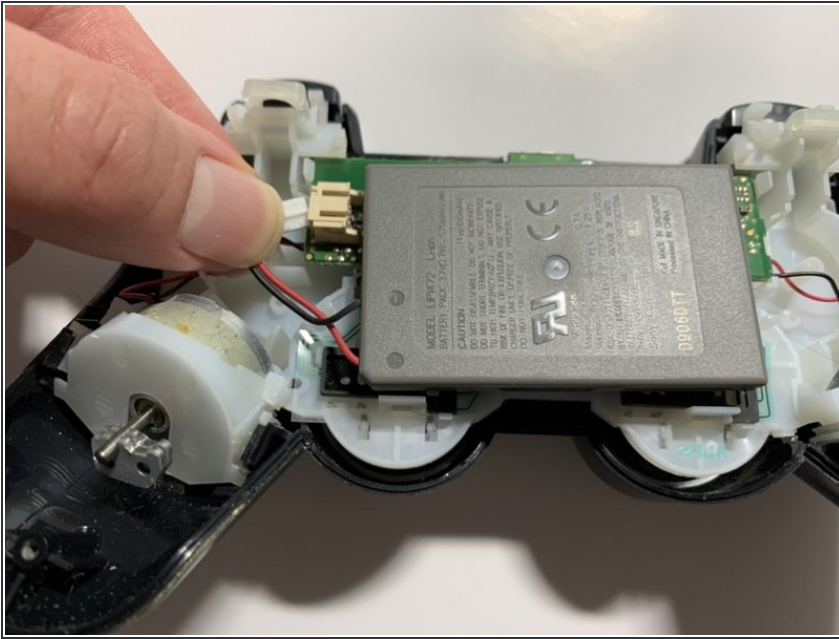
- Use the brush to remove dust/dirt particles from the inside of the front shell.
- Use a cotton swab to remove any dust/dirt particles in smaller crevices.

Step 10



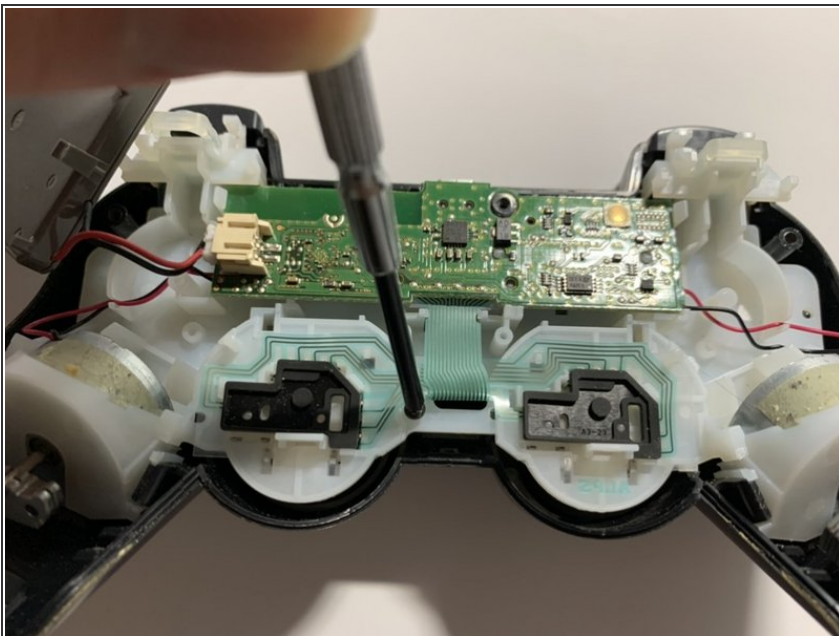
- Reattach the white body piece to the inside of the front shell by pushing the rumble motors back in place.
- ⓘ The rumble motors are properly secured when you can see that the small black hooks are holding them firmly in place.

Step 11



- Place the battery back onto the motherboard.
- Reconnect the battery by plugging the white connector piece back into the beige colored socket.

Step 12



- Use the Phillips #1 screwdriver to screw the single 7.2 mm Phillips screw to secure the white body piece inside the controller.

Step 13



- Snap the front and back shell together.
- Screw the five 7.2 mm Phillips screws on the back shell screw holders, using the Phillips #1 screwdriver.

If this maintenance did not fix your joystick drift, you may need to replace the joysticks altogether.