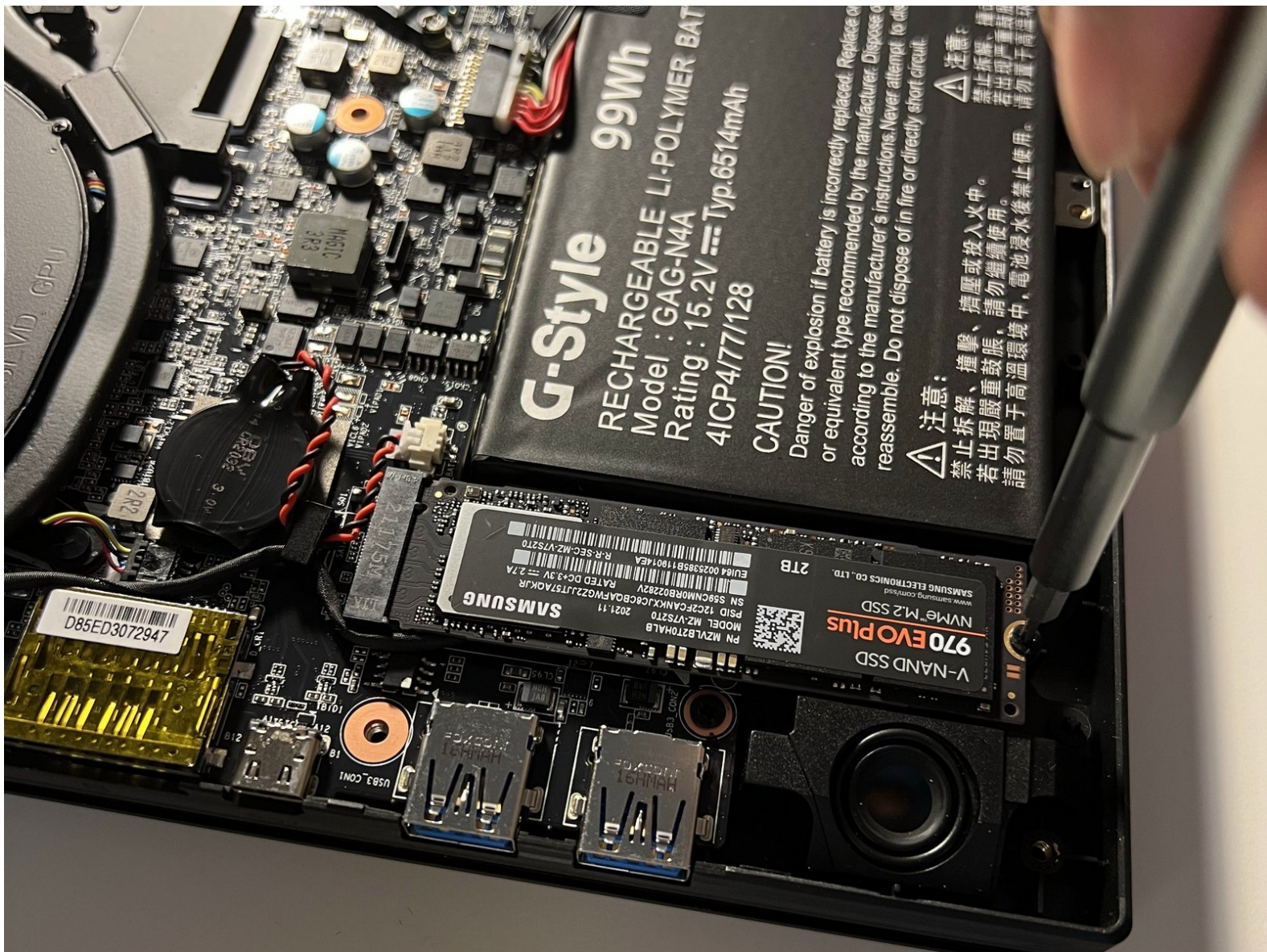




Aorus 15P XD SSD Replacement

Many people are a little confused about how to...

Written By: Weitao Shi



INTRODUCTION

Many people are a little confused about how to expand or replace storage on their gaming laptops, and this guide will help you upgrade your computer faster. There are also a lot of notes in there about some of the problems I encountered when replacing storage, so I'll share them with you. The device manufacturer is Gigabyte; the device model is AORUS 15P XD.

Prior to starting the repair, power off your laptop and unplug from the charger.



TOOLS:

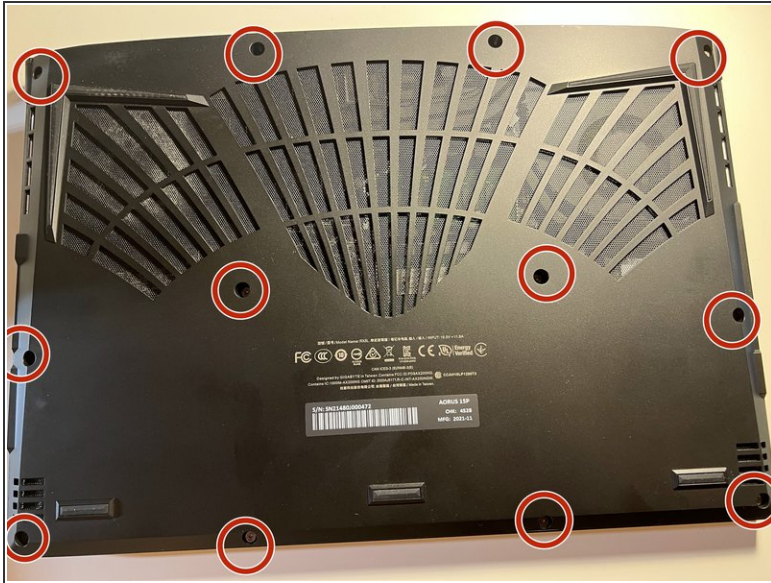
- [Pro Tech Toolkit](#) (1)



PARTS:

- [Crucial P3 NVMe PCIe M.2 2280SS SSD - solid performance, switching from HDD or SATA to NVMe™](#) (1)
- [Crucial P3 Plus NVMe PCIe M.2 2280SS SSD - fast Gen4 NVMe™ storage for data-intensive applications](#) (1)
- [Crucial P5 Plus NVMe PCIe M.2 2280SS SSD - professionals, creatives, and hardcore gamers](#) (1)

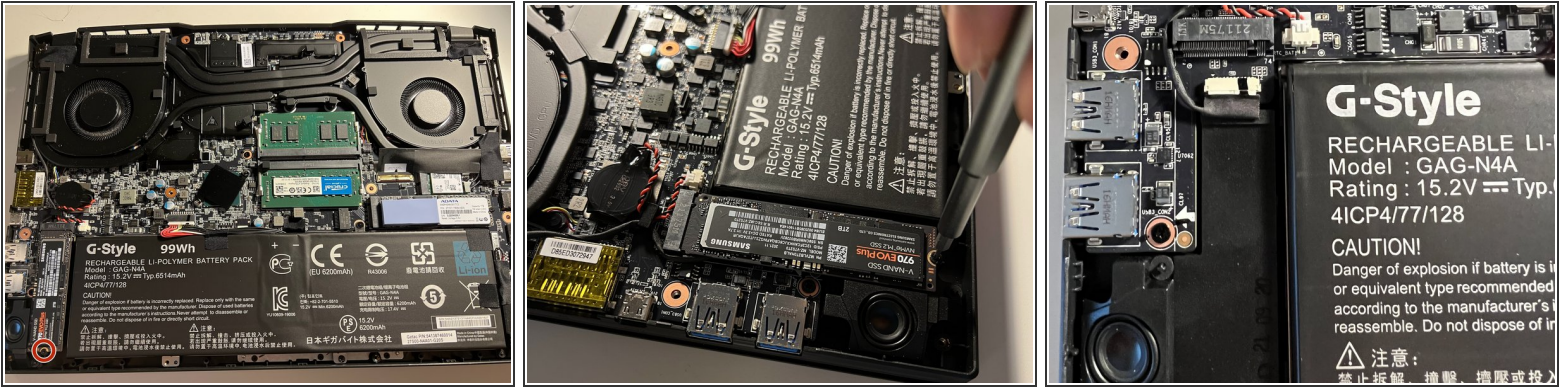
Step 1 — SSD



⚠ First, make sure the power is off and disconnect the power.

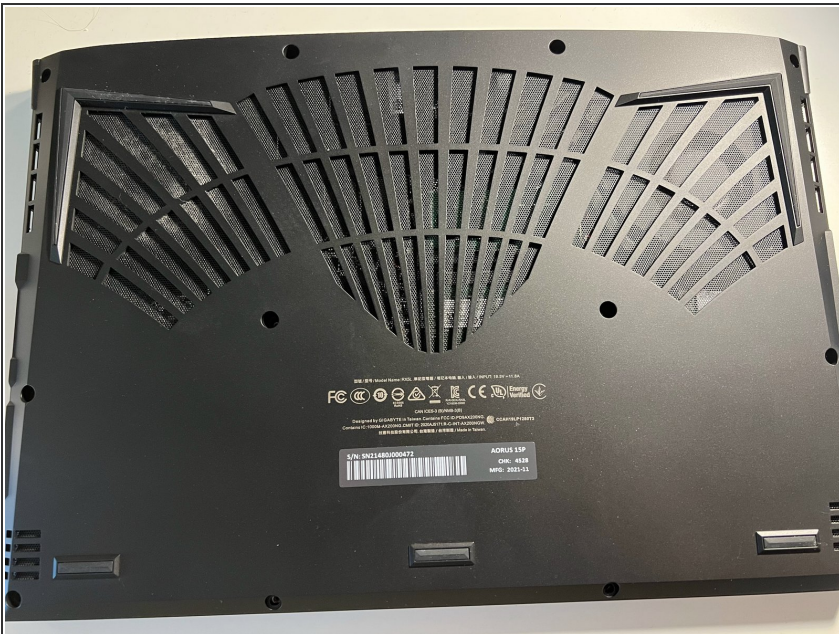
- Use a Torx security screwdriver to remove twelve 1.2 mm screws from the back case.
- Use an opening tool to gently separate the front and back case. Work your way around the perimeter of the laptop and undo the clips holding it together.
- Remove the back case.

Step 2

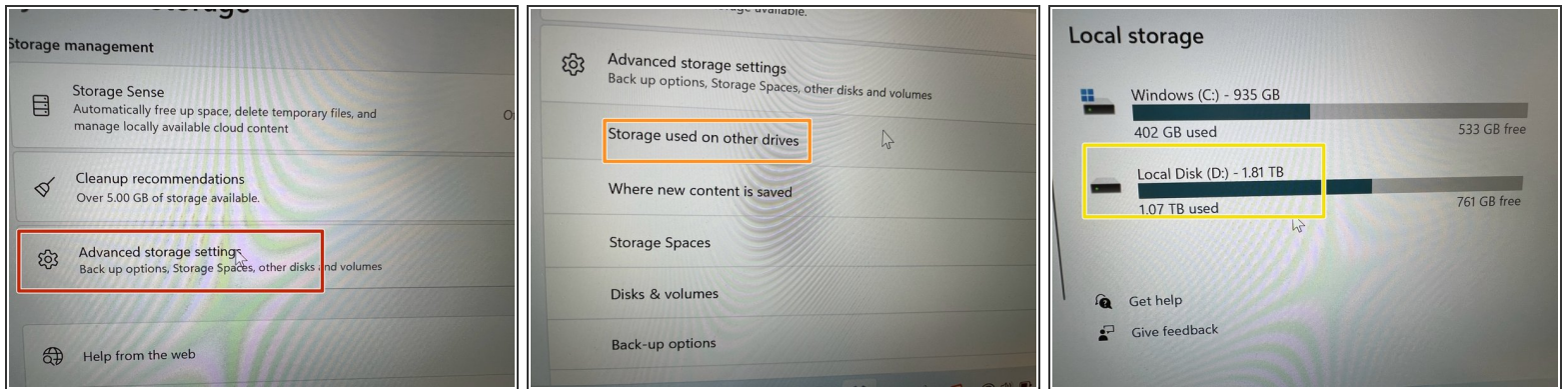


- Use a JIS screwdriver to remove the single 8 mm screw securing the SSD in place.
- Slide the SSD out of the socket connected to the motherboard.
- ☑ Slide your new or upgraded SSD in the socket securely and replace the 8 mm screw.

Step 3

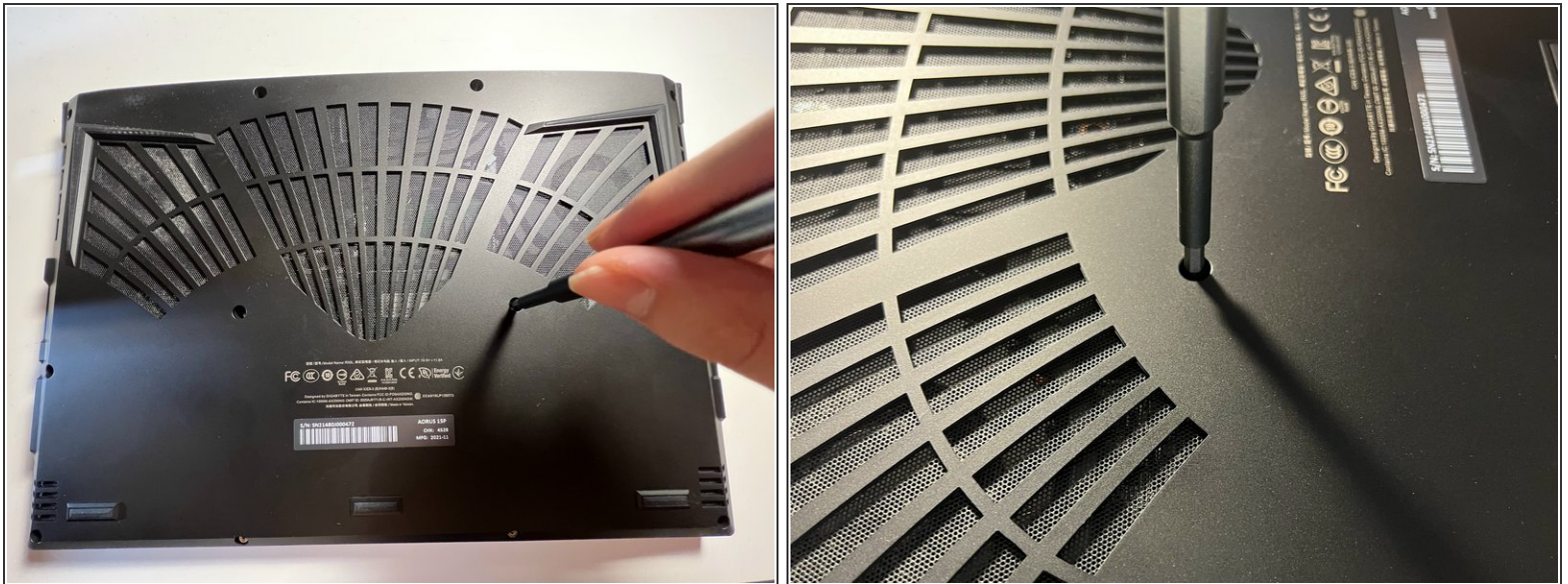


Step 4



- Turn the device back on and open the advanced storage settings.
- Choose the storage used on other drivers.
- Next, check if the storage you installed is recognized in local disk storage.

Step 5



- If the storage is detected, replace the screws.
- ❗ If your storage is not detected, open the back case to make sure the SSD is plugged in tightly to the socket. If not, go back to Step 2.

To reassemble your device, follow these instructions in reverse order.