



2018 Chevrolet Equinox Cabin Air Filter Replacement

Cabin air filters filter out dust, allergens,...

Written By: Allan



INTRODUCTION

Cabin air filters filter out dust, allergens, and debris. However, as they filter these particulates overtime, they become dirty, clogged, and inefficient. Clogged air filters do not filter allergens properly which decreases the air quality. It also reduces airflow within the vehicle and could emanate a noticeably musty odor.

To avoid this problem, we must replace the cabin air filters every 15000 - 30000 miles. This guide will help you replace your existing cabin filter to save on money and time.

Cabin Air Filters compatible with the 2018 Chevrolet Equinox can be purchased [here](#).

TOOLS:

[7/32" Nut Driver](#) (1)

PARTS:

[AC Delco Model No. 19338054](#) (1)

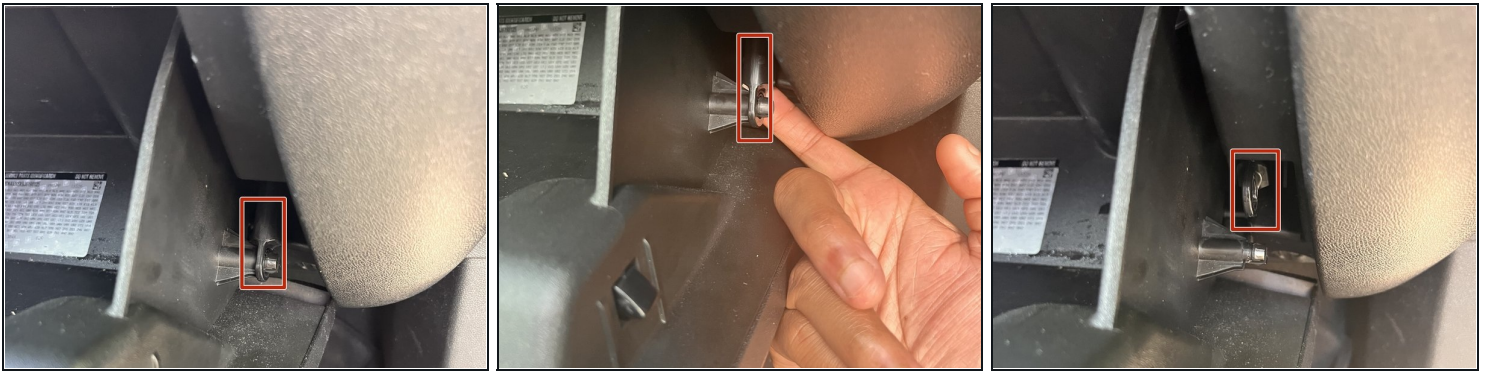
Step 1 — Cabin Air Filter



 Turn off vehicle air.

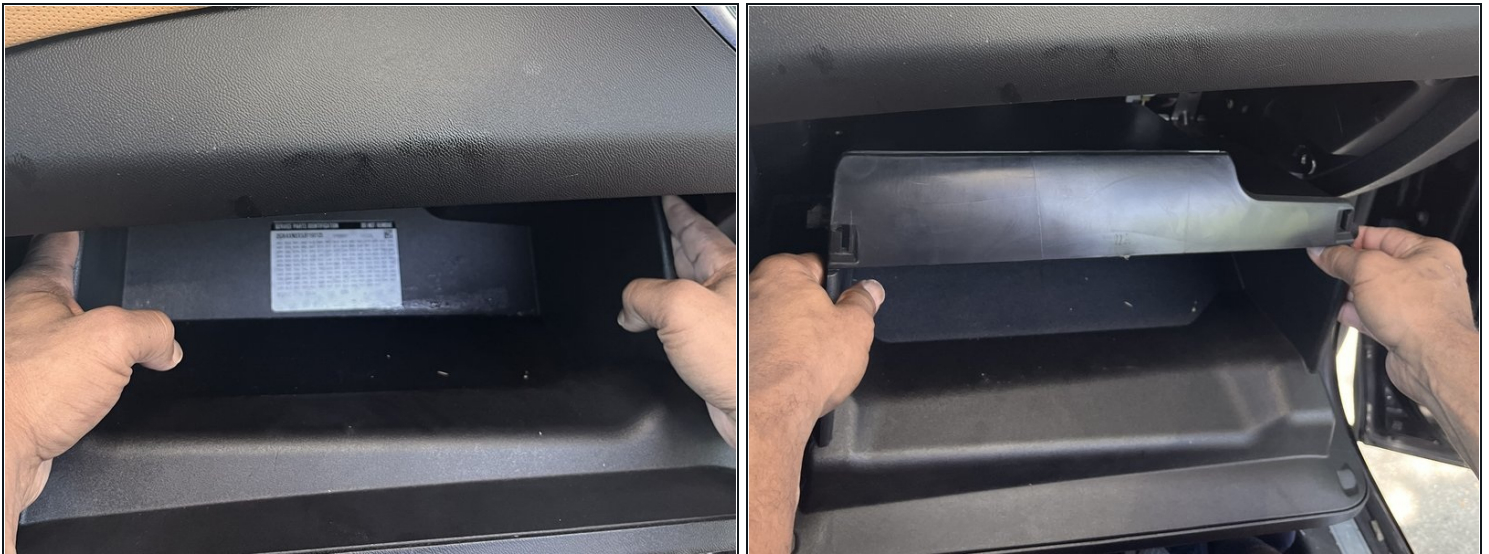
- Find the glove box on the passenger side of the vehicle.
- Open and remove all items from the glove box.

Step 2



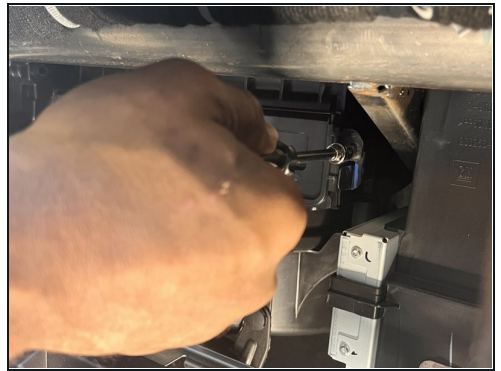
- You will see a latch on the right side of the glove box.
- Unhook the latch by gently pulling the latch outwards from the glove box.

Step 3



- Place your hands on the sides of the glove box.
- Tightly squeeze the sides inward, and pull the glove box forward to detach the glove box from the dashboard.

Step 4



- The cabin air filter box has one 7/32" screw on each side.
- Use a 7/32" nut driver to remove these two screws.

Step 5



- Plastic tabs will be right beneath the screws highlighted by markups.
- Push the tabs in on both sides of the box simultaneously.
- Lift the lid of the box to find the old cabin air filter.

Step 6



- Remove the filter, and check for debris in the filter box.

Step 7



- Place the new filter in the filter box.
- ⓘ The filter has an arrow, as indicated by the red box. Ensure that the arrow points down when placing the filter.

Step 8



- Pull the lid down and press both sides to close the filter box.
- ① If you hear a clicking sound, then it means that the lid is closed.

To reassemble your glovebox, follow these instructions in reverse order.