



# Belkin Express Dock Teardown

This teardown will show the internal construction of the Belkin Thunderbolt Express which offers Thunderbolt pass-through, ethernet, FireWire800, audio and usb3 ports. On the back of the board are Parade chips which support display port and HDMI/DVI !

Written By: thompsonfamily



---

## INTRODUCTION

The only tools needed are a philips screwdriver and a narrow putty knife.



### TOOLS:

- [Phillips #00 Screwdriver](#) (1)
  - [Putty knife](#) (1)
-

## Step 1 — Belkin Express Dock Teardown



- View of the connectors

## Step 2



- Use a putty knife to remove the four rubber feet. Once removed, there are 4 phillips screws to be removed.



### Step 3



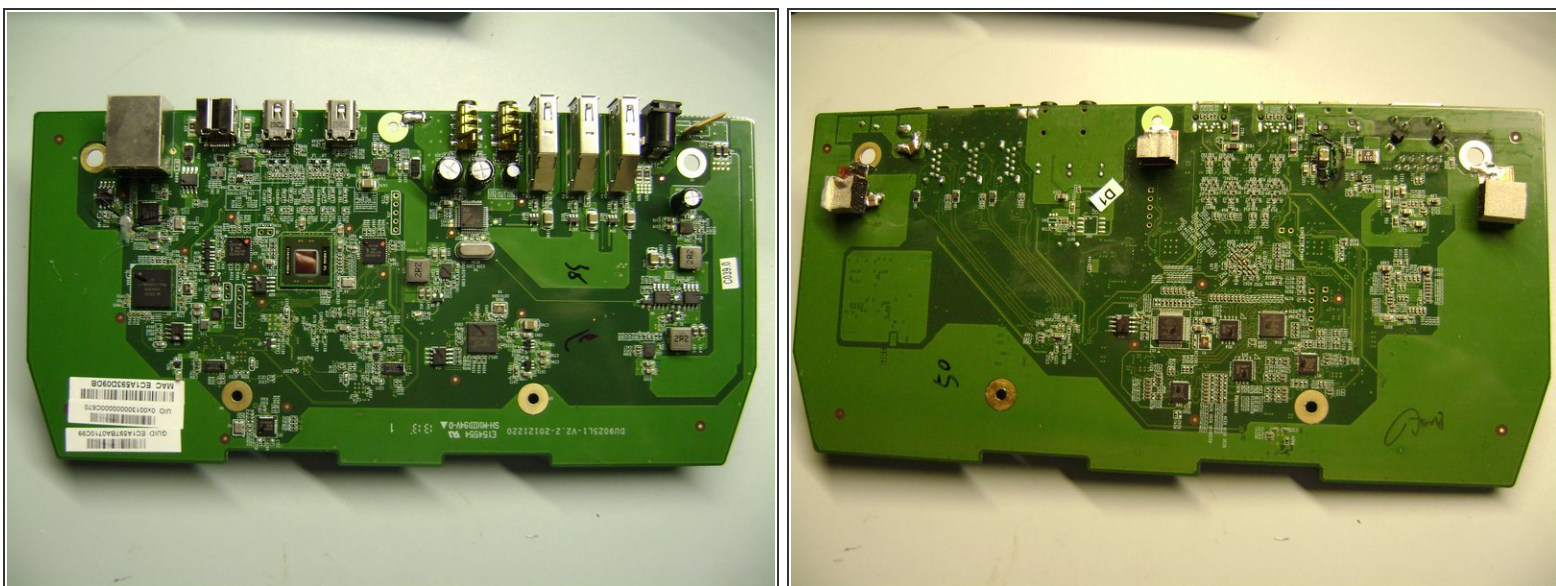
- The next step is to use the putty knife to pry off one of the two plastic endcaps, they snap out and the circuit board slides out.

### Step 4



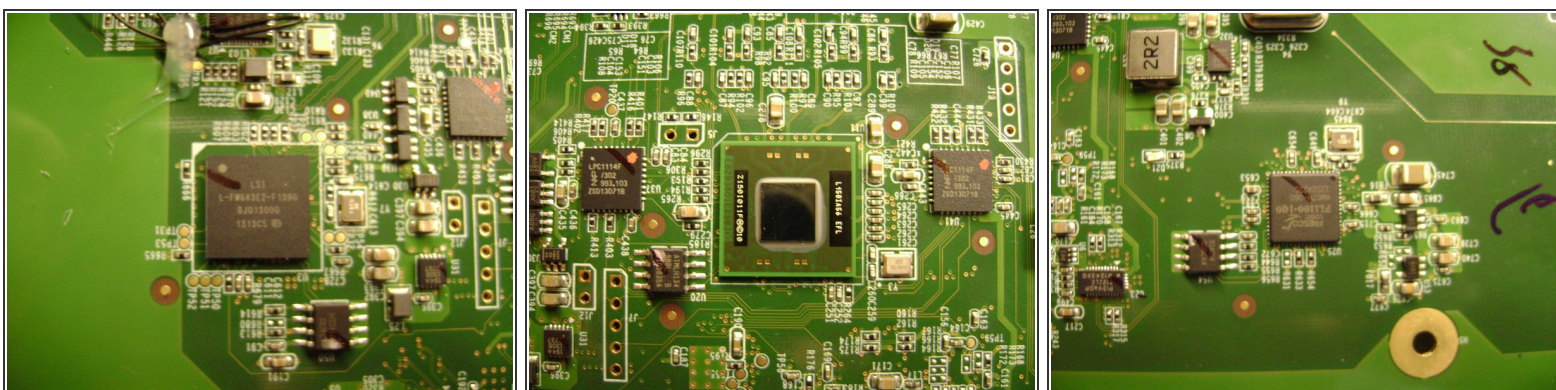
- Use the phillips screwdriver to remove 5 more screws to remove the plastic mounting frame.

## Step 5



- Front and back of the board.
- From left to right on the front of the board the major chips are: LSI FW643E-02 (FireWire800); Broadcom BCM57762 (gige); Intel L150I56 (Thunderbolt controller), NXP LPC1114F (two), Fresco FL1100 (USB3); C-Media CM119A (Audio)
- From left to right on the back of the board the major chips are: Parade PS161HDM; Parade PS8301 (two); NXP ZSD310 (two); Parade PS8321. The chips seem to support HDMI/DVI conversion and Display Port!

## Step 6



- close-ups of the major chips

To reassemble your device, follow these instructions in reverse order.