



How to Reinforce a Microbead Plush

In this guide we will reinforce the inside of a microbead plush to prevent spillage without changing the exterior.

Written By: Oscar Olivares



INTRODUCTION

In this repair, we will be reinforcing a microbead plush by creating a bag for the microbeads. Using this repair, we can extend the duration of items a loved one has given or keep these items in near-perfect condition. Before starting this repair, you should have a spool of a thread in the plush's color to make any repairs unnoticeable. This repair will take a while and can get messy; for example, when flipping the plush casing, use an area that is easy to clean.



TOOLS:

- [Hand Sewing Needle](#) (1)
- [Sewing Thread](#) (1)
- [lightweight fabric](#) (1)
- [Utility Scissors](#) (1)
- [Marker](#) (1)
- [Funnel](#) (1)
- [Seam Ripper](#) (1)
- [Bucket](#) (1)

Step 1 — How to Reinforce a Microbead Plush



- Look for seams in the microbead plush that you can tear to remove its contents.
- Using a seam ripper, make a hole the size of your thumb.
- ⓘ You can enlarge the hole if needed.
- ⓘ Make sure that you follow the seam when you make the hole.

Step 2



- Dump out the contents of the plush into a large container using that hole you made.
- ⓘ Make sure not to let the plush touch the beads. They will stick to the plush.

Step 3



- Flip the plush inside out using the hole you made.
- i* Be wary that some micro-beads may still be stuck to the inside of the fabric.

Step 4



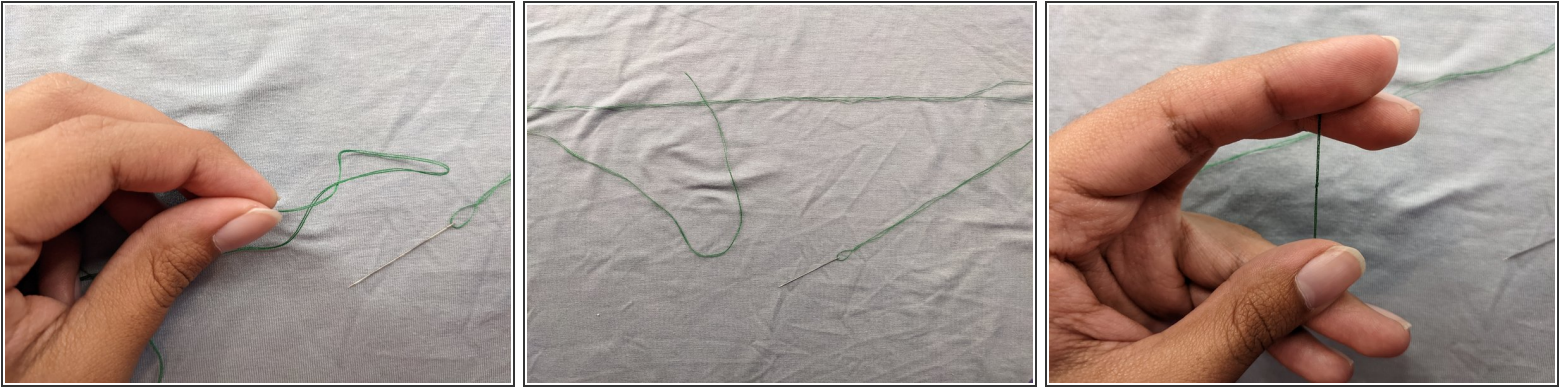
- Fold the inside-out casing in half.
- Place it on a piece of fabric folded into fourths. The loose ends of the fabric should be facing you.
- Trace the outline of the casing with a marker.


Step 5



- Use scissors to cut out the outline of the plush.
- ⓘ You may use safety pins on the inside of the outline so the fabric doesn't slip.
- ⓘ You can use the casing as a guide if you're unsure with your outline.

Step 6



- Measure about 20 times the length of the plush in thread.
- Push the thread through the eye of the needle until both sides of the needle have an equal amount of thread.
-  Check out [Repairing a Stuffed Teddy](#) if you're unsure how to thread a needle.
- Create a small loop using the loose ends, leaving about 2 centimeters to wrap around the base of the loop. Push the excess through the loop to create a knot.

Step 7



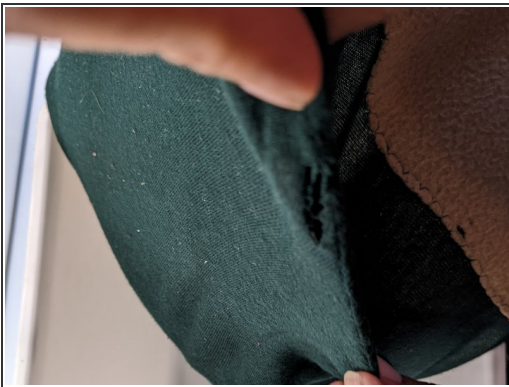
- Unfold the material keeping both outline sheets together.
- ⓘ This will create a bag for the microbeads to go in.
- After unfolding, use a different color marker to note where the hole made in step one is on your plush.
- ⚠ Do not close this hole as this is the refilling point.
- Start stitching along the edge of the outlines, weaving the needle every centimeter to close any gaps.

Step 8



- Stuff the bag into the plush, leaving the openings together.
 - Sew the edges of the openings onto the plush to prevent the bag from slipping when refilling.
 - Insert the funnel in the opening and begin refiling the plush.
- i** Refill the plush slowly using a cup to avoid spilling the microbeads over the plush.

Step 9



- After refilling the plush, sew the opening closed.
- After closing the opening press down on the plush to spread around the microbeads.

With those final stitches, your microbead plush shouldn't spill anymore.