



Nintendo Switch Right Joy-Con SL/SR Button Board Replacement

A bent SL/SR button board cable will cause the...

Written By: Javier Cora



INTRODUCTION

A bent SL/SR button board cable will cause the SYNC button, the LED lights and the SL/SR buttons to be unresponsive. This will make the Nintendo Switch Joy-Con unable to connect to a game console by itself without a second Joy-Con.

Before using this guide, determine that the buttons are unresponsive by going to the system settings of the game console and testing the input devices under the 'Controllers and Sensors' section.



TOOLS:

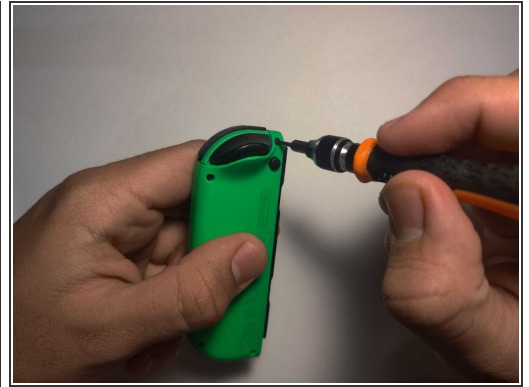
- [Tri-point Y00 Screwdriver](#) (1)
- [Phillips #00 Screwdriver](#) (1)
- [Prying and Opening Tool Assortment](#) (1)



PARTS:

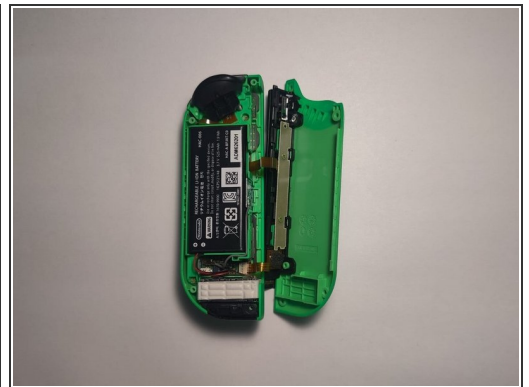
- [Nintendo Switch Joy-Con Controller SL/SR Button Boards](#) (1)

Step 1 — SL/SR Button Board



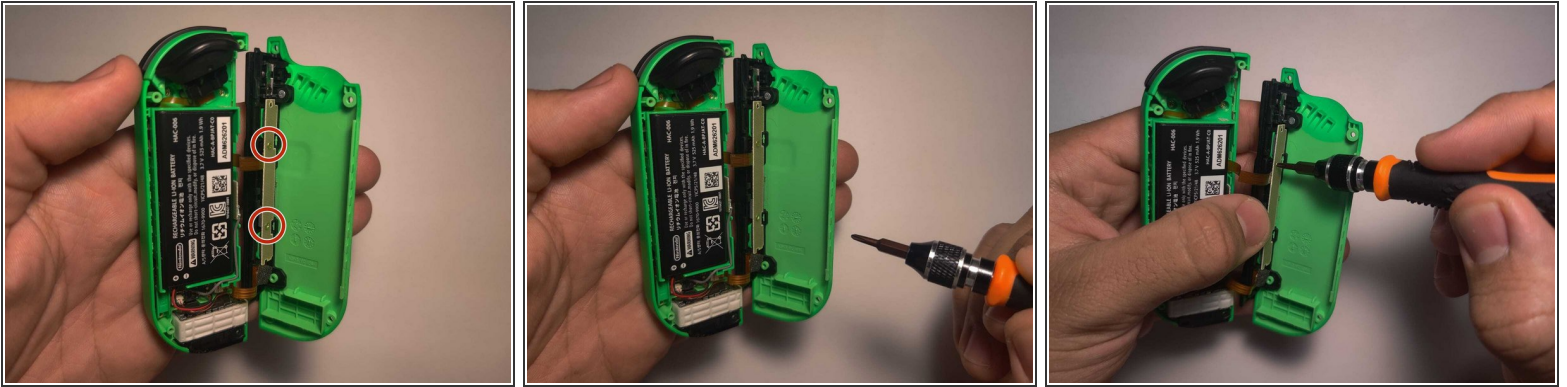
- Remove the four 6 mm screws visible on the back of the Joy-Con using the Tri-point Y00 screwdriver.
- ⓘ During the entire procedure, place the small screws somewhere you won't lose them and keep them organized.

Step 2



- Open the Joy-Con by inserting the opening pick tool into the bottom corner and sliding it upwards.
- ⚠ When opening, be careful not to 'yank' the two halves of the Joy-Con far apart, as they are still attached by cables.
- ⚠ The ribbon cables are fragile. Forceful pulling may lead to device damage.

Step 3



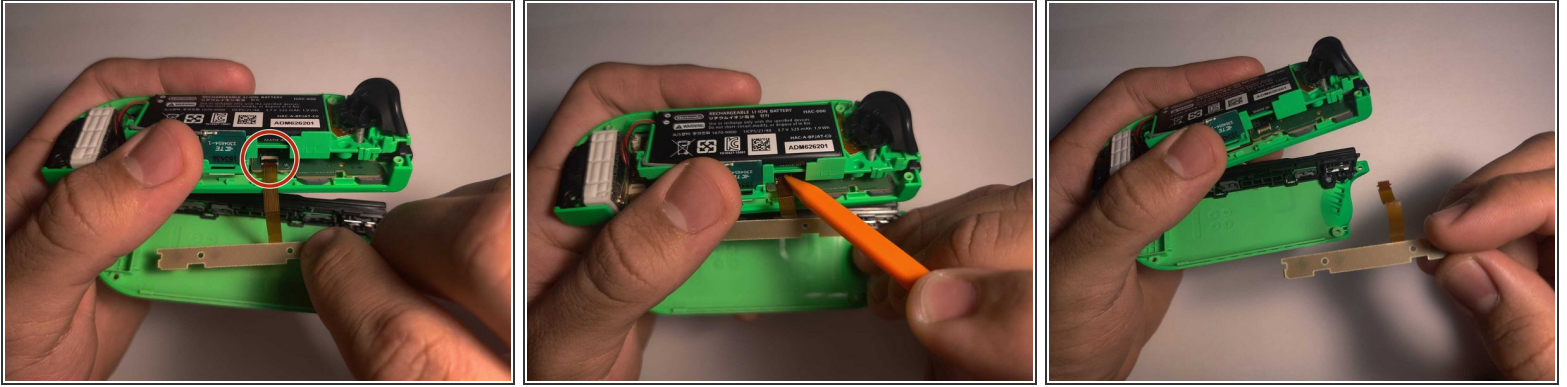
- Remove the two 3 mm screws on the charging rail using the Phillips #00 screwdriver.
- ⓘ The part that needs to be replaced is the button board directly under these two screws.

Step 4



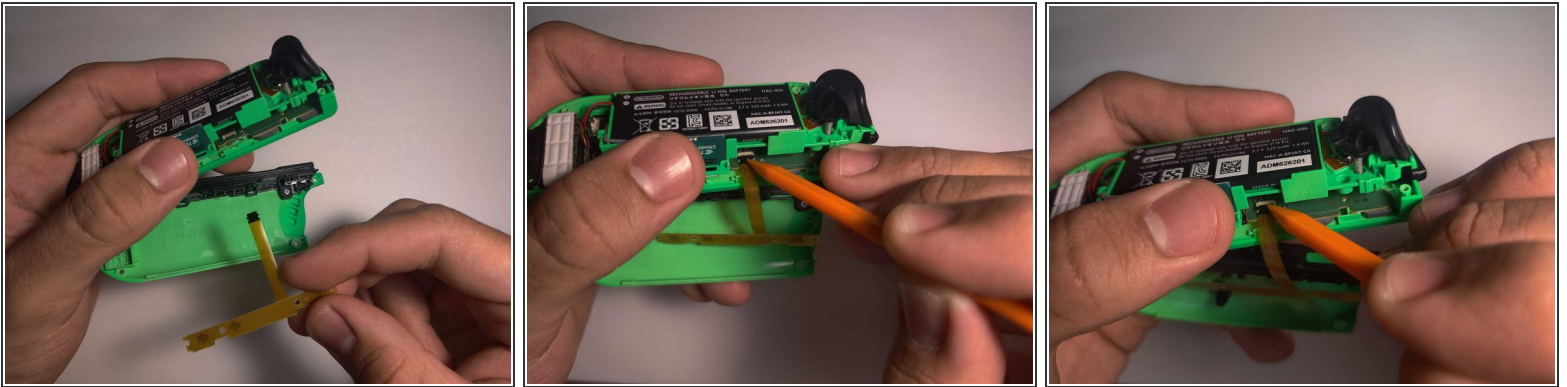
- Remove the three 3 mm screw on the battery compartment using the Phillips #00 screwdriver.
- ⓘ With the battery compartment loosened, the locking tab holding the cable in place will be easy to access.

Step 5



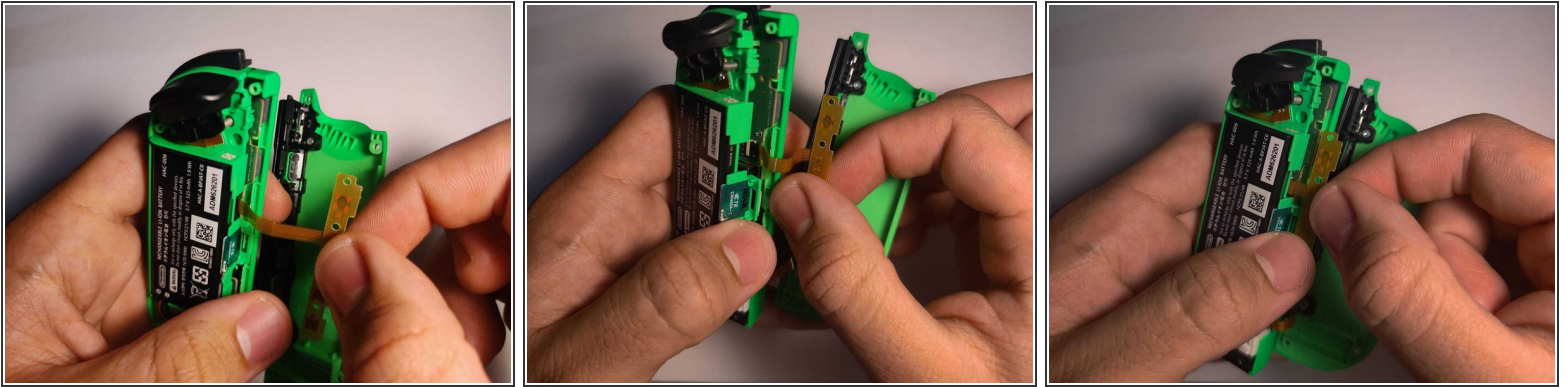
- Use the plastic spudger tool to lift the tab lock holding the bent button board cable. Lightly lift the battery compartment to have more space while doing so.
- Once the tab is unlocked, remove the bent cable.

Step 6



- Insert the new replacement button board cable into the tab.
- Use the spudger to re-lock the tab to hold the new part in its place.

Step 7



- To avoid having the same problem in the future, make sure the new cable is bent ***under*** the battery compartment after reassembly.
- Lightly lift the battery compartment to make it easier to bend the new button board cable under it.
- ⓘ The space between the battery and the back shell of the Joy-Con is very tight, which caused the original cable to bend and malfunction. Inserting the new cable under the battery will give it more space.

To reassemble your device, follow these instructions in reverse order, starting from Step 4.