



Samsung Galaxy A52 Loudspeaker Replacement

How to replace the loudspeaker on your Samsung Galaxy A52.

Written By: Adriana Zwink



INTRODUCTION

Use this guide to replace the loudspeaker on your Samsung Galaxy A52.

You'll need replacement adhesive to reattach components when reassembling the device. If you do not replace the adhesive seals when reassembling, your device will function normally, but will most likely lose its water protection.



TOOLS:

- [iOpener](#) (1)
- [Suction Handle](#) (1)
- [iFixit Opening Picks \(Set of 6\)](#) (1)
- [Heat Gun](#) (1)
optional
- [Microfiber Cleaning Cloths](#) (1)
optional
- [Isopropyl Alcohol \(90% or Greater\)](#) (1)
optional
- [Phillips #00 Screwdriver](#) (1)
- [Spudger](#) (1)



PARTS:

- [Precut Adhesive Card](#) (1)
optional
- [iFixit Adhesive Remover \(for Battery, Screen, and Glass Adhesive\)](#) (1)
optional

Step 1 — Heat the back cover



- [Prepare an iOpener](#) and apply it to the back cover for at least two minutes to loosen the adhesive underneath.
- ⓘ A hair dryer, heat gun, or hot plate may also be used, but be careful not to overheat the phone —the display and internal battery are both susceptible to heat damage.

Step 2 — Insert an opening pick



- Secure a suction handle to the right edge of the back cover, as close to the edge as possible.
 - ⓘ If the back cover is damaged, the suction handle may not stick. Try [lifting it with strong tape](#), or superglue the suction handle in place and allow it to cure so you can proceed.
- Lift the back cover with the suction handle to create a small gap between the back cover and the frame.
 - ⓘ In case you have trouble creating a gap, apply more heat to further soften the adhesive. Follow the [iOpener](#) instructions to avoid overheating.
- Insert an opening pick into the gap you created.

Step 3 — Slice the adhesive



- Slide the opening pick to the top right corner to slice the adhesive.
- Leave the opening pick in its place to prevent the adhesive from resealing.


Step 4



- Insert a second opening pick underneath the top right edge of your phone.
- Slide the opening pick to the bottom right corner to slice the adhesive.
- Leave the opening pick in place to prevent the adhesive from resealing.

Step 5



 If the adhesive becomes hard to cut, it has most likely cooled down. [Use your iOpener](#) to reheat it.

- Insert a third opening pick at the bottom edge of your phone.
- Slide the opening pick along the bottom edge of your phone to slice the adhesive.
- Leave the opening pick in the bottom left corner to prevent the adhesive from resealing.

Step 6



- Insert a fourth opening pick underneath the bottom left corner of your phone.
- Slide the opening pick along the left edge to slice the adhesive.
- Leave the opening pick in the top left corner to prevent the adhesive from resealing.

Step 7



- Insert a fifth opening pick underneath the top left corner.
- Slide the opening pick along the top edge of the back cover to slice the remaining adhesive.

Step 8 — Remove the back cover



- Remove the back cover.
- ★ Apply new adhesive where necessary after cleaning the relevant areas with isopropyl alcohol (>90%).
- ★ [Secure the new back cover with pre-cut adhesive](#) or double-sided adhesive tape. After installing the back cover, apply strong, steady pressure to your phone for several minutes to help the adhesive form a good bond—a stack of heavy books works well.

Step 9 — Unscrew the motherboard cover



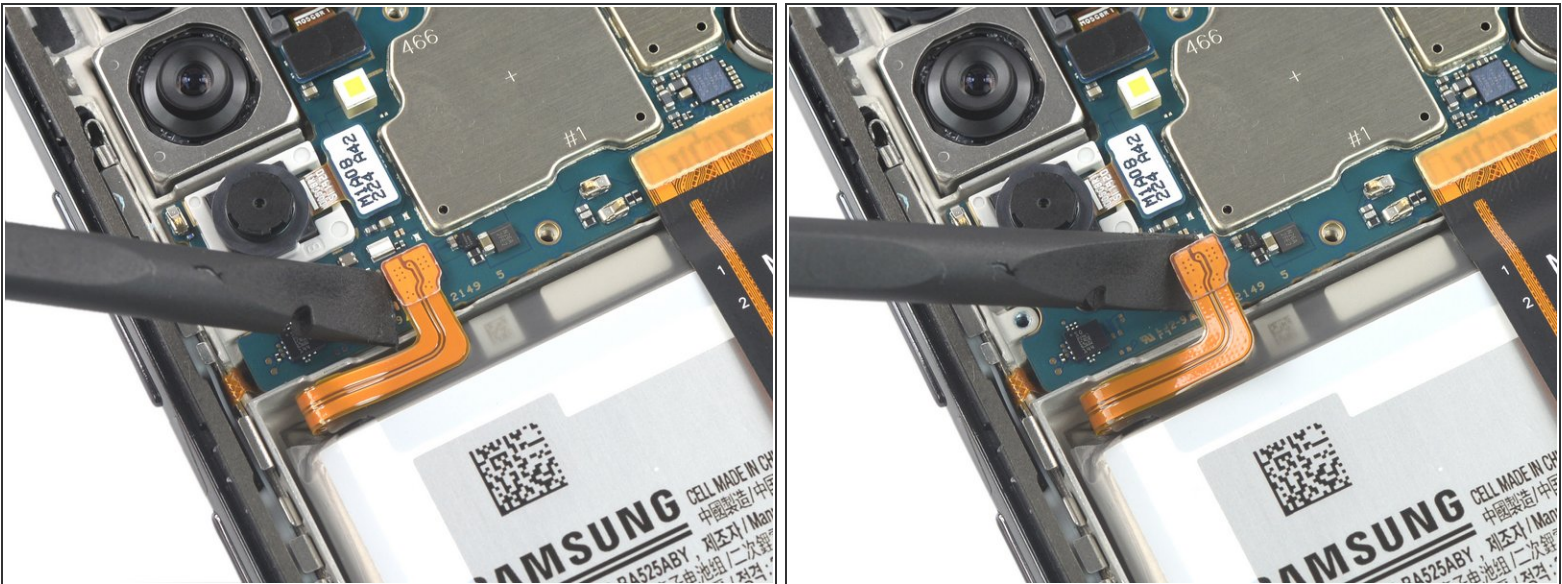
- Use a Phillips screwdriver to remove the ten 4.4 mm-long screws securing the motherboard cover.

Step 10 — Pry up the motherboard cover



- Insert an opening pick underneath the left edge of the motherboard cover.
- Use the opening pick to pry up the motherboard cover.
- Remove the motherboard cover.

Step 11 — Disconnect the battery



- Use a spudger to disconnect the battery cable by prying the connector straight up from its socket.

Step 12 — Unscrew the loudspeaker assembly



- Use a Phillips screwdriver to remove the six 4.4 mm-long screws securing the loudspeaker assembly.

Step 13 — Pry up the loudspeaker assembly



- Insert the pointed end of a spudger into the gap on the right edge of the loudspeaker assembly.
- Pry up the loudspeaker assembly.

Step 14 — Remove the loudspeaker assembly



- Remove the loudspeaker assembly.
- ★ During reassembly apply new adhesive where it's necessary after cleaning the relevant areas with isopropyl alcohol (>90%).

If possible, turn on your device and test your repair before installing new adhesive and resealing.

Compare your new replacement part to the original part—you may need to transfer remaining components or remove adhesive backings from the new part before installing.

To reassemble your device, follow the above steps in reverse order.

Take your e-waste to an [R2 or e-Stewards certified recycler](#).

Repair didn't go as planned? Try some [basic troubleshooting](#), or ask our [Answers community](#) for help.