



Samsung Galaxy A52 Screen Replacement

Use this guide to replace a cracked or broken...

Written By: Adriana Zwink



INTRODUCTION

Use this guide to replace a cracked or broken screen on your Galaxy A52.

If the frame is deformed, it's important to replace it to make sure the new screen will mount correctly and won't suffer damage from uneven pressure.

Before disassembling your device, discharge the battery below 25%. The battery can catch fire and/or explode if accidentally punctured, but the chances of that happening are much lower if discharged.

Note: This guide instructs you to replace only the screen while leaving the original frame and motherboard in place. However, some replacement screens come pre-installed in a new frame (a.k.a. chassis), which requires a very different procedure. Make sure you have the correct part before starting this guide.

You'll need replacement adhesive to reattach components when reassembling the device. If you do not replace the adhesive seals when reassembling, your device will function normally, but will most likely lose its water protection.



TOOLS:

[Phillips #00 Screwdriver](#) (1)
[Spudger](#) (1)
[iOpener](#) (1)
[Suction Handle](#) (1)
[iFixit Opening Picks \(Set of 6\)](#) (1)
[Heat Gun](#) (1)
[Microfiber Cleaning Cloths](#) (1)
[Isopropyl Alcohol \(90% or Greater\)](#) (1)
[Plastic Cards](#) (1)



PARTS:

[Tesa 61395 Tape](#) (1)
[iFixit Adhesive Remover](#) (1)

Step 1 — Heat the back cover



- [Prepare an iOpener](#) and apply it to the back cover for at least two minutes to loosen the adhesive underneath.
- ⓘ A hair dryer, heat gun, or hot plate may also be used, but be careful not to overheat the phone—the display and internal battery are both susceptible to heat damage.

Step 2 — Insert an opening pick



- Secure a suction handle to the right edge of the back cover, as close to the edge as possible.
 - ① If the back cover is damaged, the suction handle may not stick. Try [lifting it with strong tape](#), or superglue the suction handle in place and allow it to cure so you can proceed.
- Lift the back cover with the suction handle to create a small gap between the back cover and the frame.
 - ① In case you have trouble creating a gap, apply more heat to further soften the adhesive. Follow the [iOpener](#) instructions to avoid overheating.
- Insert an opening pick into the gap you created.

Step 3 — Slice the adhesive



- Slide the opening pick to the top right corner to slice the adhesive.
- Leave the opening pick in its place to prevent the adhesive from resealing.

Step 4



- Insert a second opening pick underneath the top right edge of your phone.
- Slide the opening pick to the bottom right corner to slice the adhesive.
- Leave the opening pick in place to prevent the adhesive from resealing.

Step 5



- ⓘ If the adhesive becomes hard to cut, it has most likely cooled down. [Use your iOpener](#) to reheat it.
- Insert a third opening pick at the bottom edge of your phone.
 - Slide the opening pick along the bottom edge of your phone to slice the adhesive.
 - Leave the opening pick in the bottom left corner to prevent the adhesive from resealing.

Step 6



- Insert a fourth opening pick underneath the bottom left corner of your phone.
- Slide the opening pick along the left edge to slice the adhesive.
- Leave the opening pick in the top left corner to prevent the adhesive from resealing.

Step 7



- Insert a fifth opening pick underneath the top left corner.
- Slide the opening pick along the top edge of the back cover to slice the remaining adhesive.

Step 8 — Remove the back cover



- Remove the back cover.
- ★ Apply new adhesive where necessary after cleaning the relevant areas with isopropyl alcohol (>90%).
- ★ [Secure the new back cover with pre-cut adhesive](#) or double-sided adhesive tape. After installing the back cover, apply strong, steady pressure to your phone for several minutes to help the adhesive form a good bond—a stack of heavy books works well.

Step 9 — Unscrew the motherboard cover



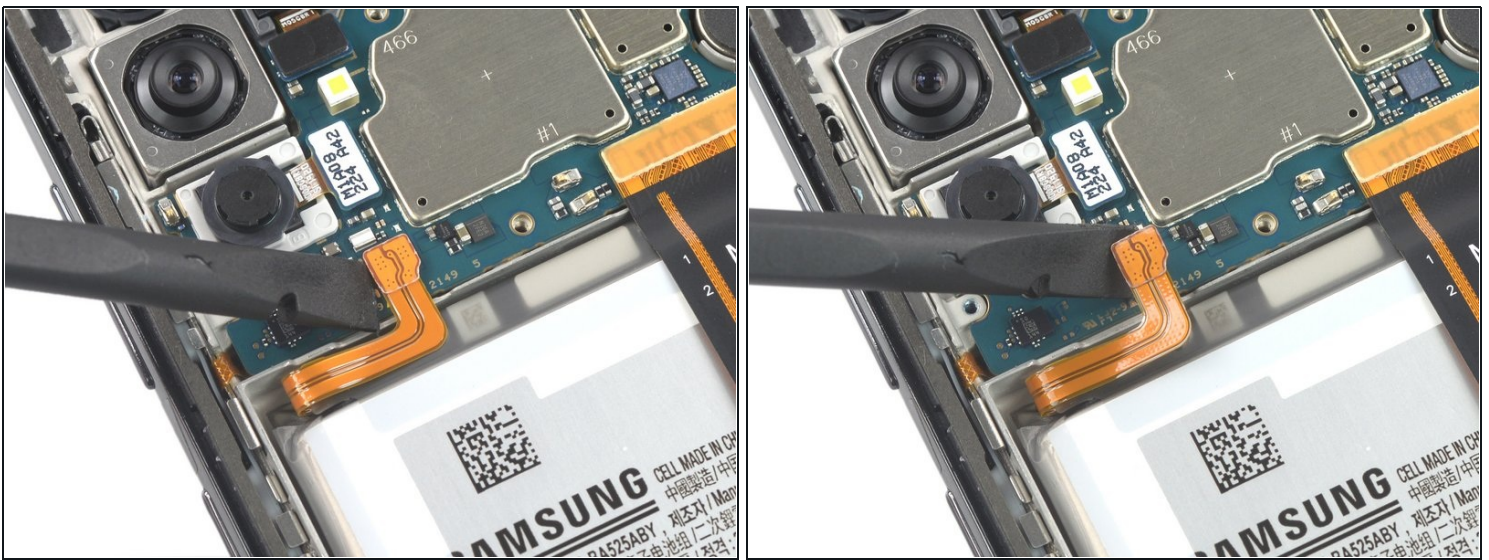
- Use a Phillips screwdriver to remove the ten 4.4 mm-long screws securing the motherboard cover.

Step 10 — Pry up the motherboard cover



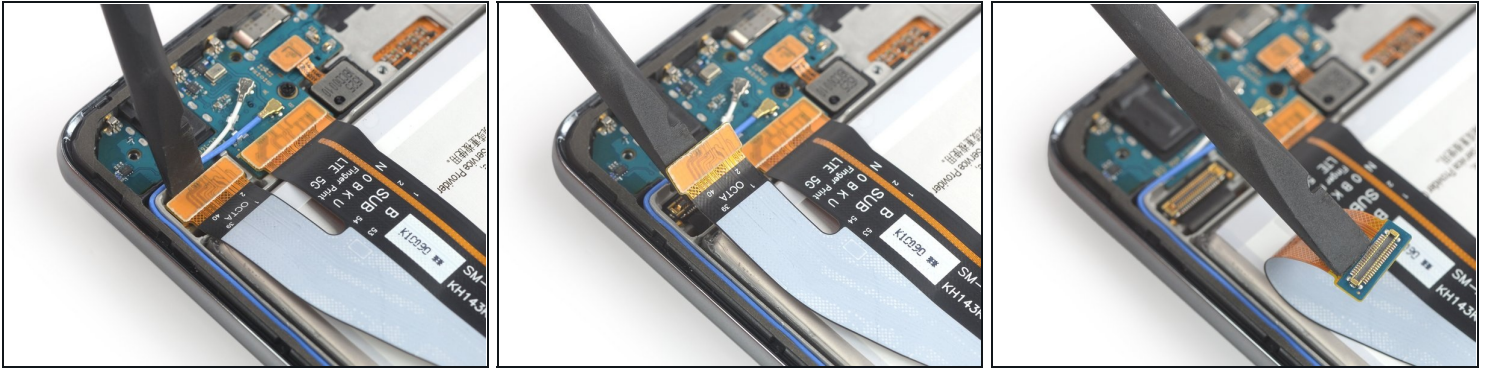
- Insert an opening pick underneath the left edge of the motherboard cover.
- Use the opening pick to pry up the motherboard cover.
- Remove the motherboard cover.

Step 11 — Disconnect the battery



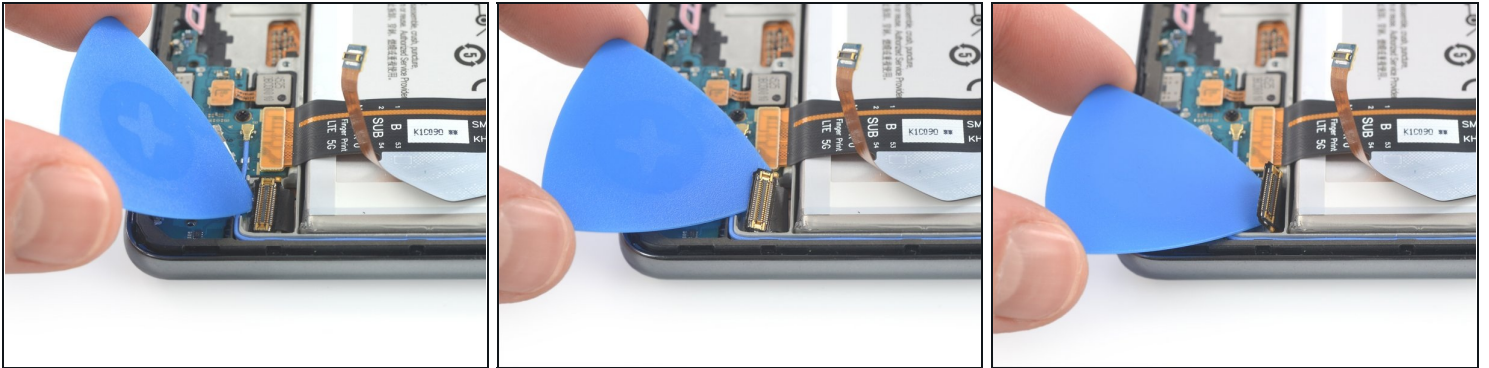
- Use a spudger to disconnect the battery cable by prying the connector straight up from its socket.

Step 12 — Disconnect the interconnect cable



- Use the flat end of a spudger to disconnect the right connector of the interconnect cable from the daughterboard.
- Carefully bend the cable to the top of the phone to get access to the screen connector socket.

Step 13 — Pry up the screen connector



- ① The screen connector is adhered to the daughterboard with mild adhesive.
- Insert an opening pick underneath the screen connector.
- Pry up the screen connector.

Step 14 — Heat the screen



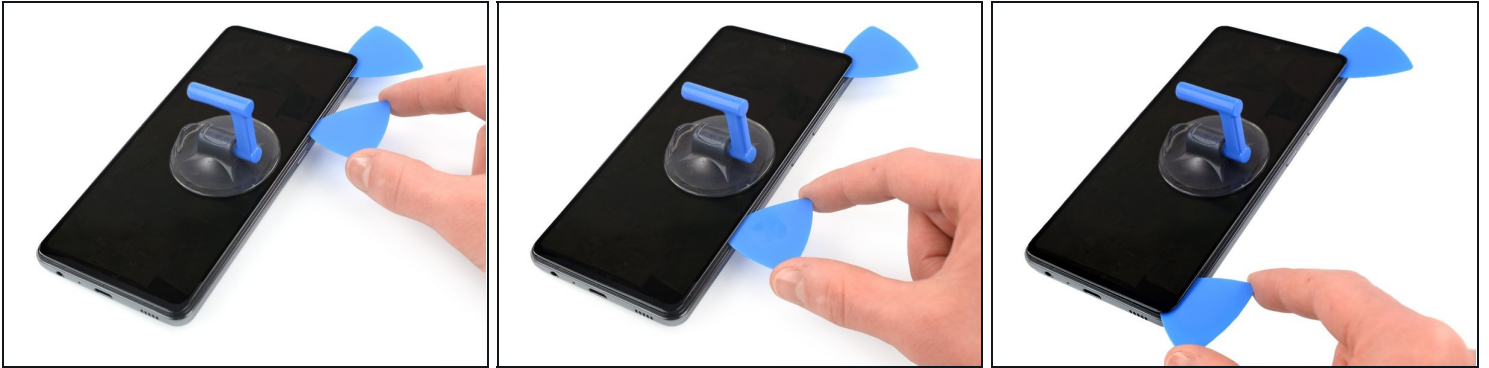
- Apply a [heated iOpener](#) or a heat gun to the screen to loosen the adhesive underneath. Apply the iOpener for at least two minutes.

Step 15 — Create a gap



- Apply a suction handle to the right edge of the screen.
 - ① If your screen is badly cracked, covering it with a layer of clear packing tape may allow the suction handle to adhere. Alternatively, [very strong tape](#) may be used instead of the suction handle. If all else fails, you can superglue the suction handle to the screen.
- Lift the screen with the suction handle to create a small gap between the screen and the frame.
- Insert an opening pick into the gap between the midframe and the screen.
- Slide the opening pick to the top right corner to slice the adhesive.
- Leave the opening pick in its place to prevent the adhesive from resealing.

Step 16 — Slice the adhesive



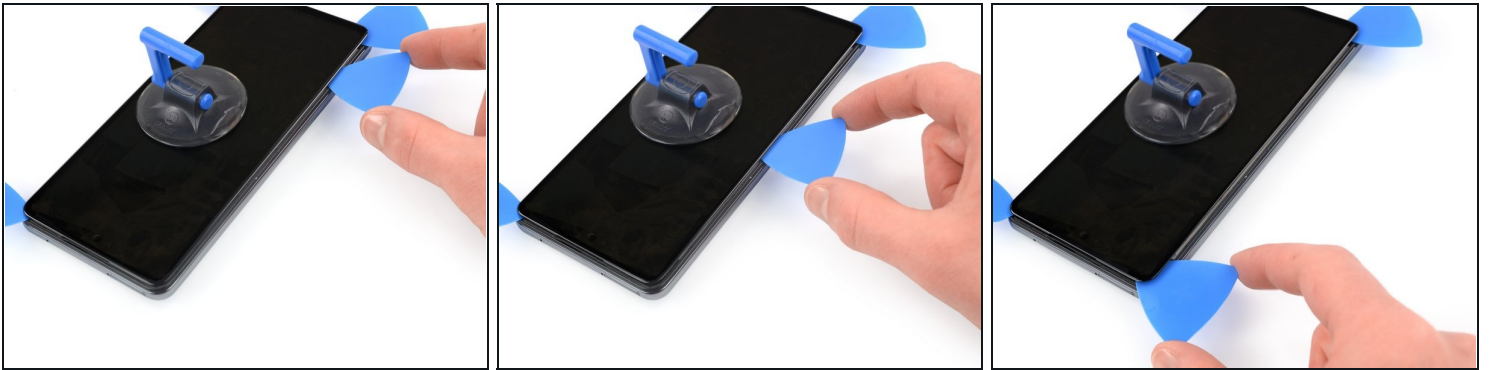
- Insert a second opening pick underneath the top right corner and slide it along the right edge to the bottom right corner of the screen to cut the adhesive.
- Leave the opening pick in place to prevent the adhesive from resealing.

Step 17



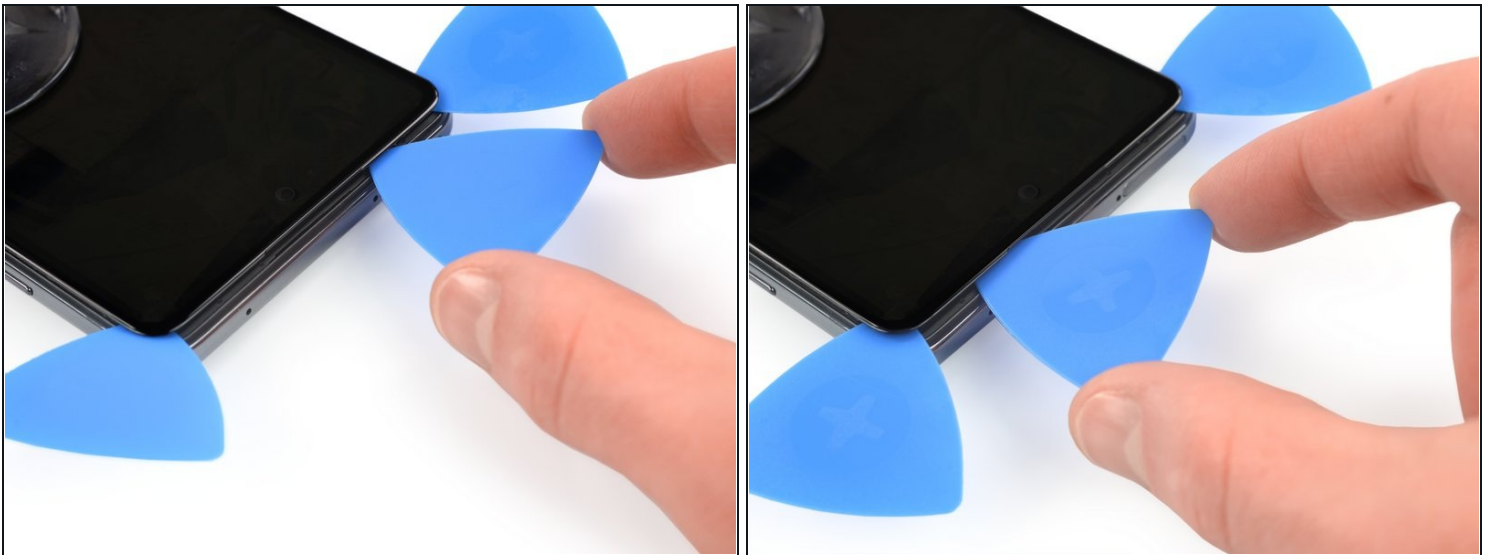
- ① If the adhesive becomes hard to cut, it has most likely cooled down. [Use your iOpener](#) or heat gun to for 1-2 minutes to reheat it.
- Insert a third opening underneath the bottom right corner.
- Slide the opening pick to the bottom left corner.
- Leave the opening pick in its place to prevent the adhesive from resealing.

Step 18



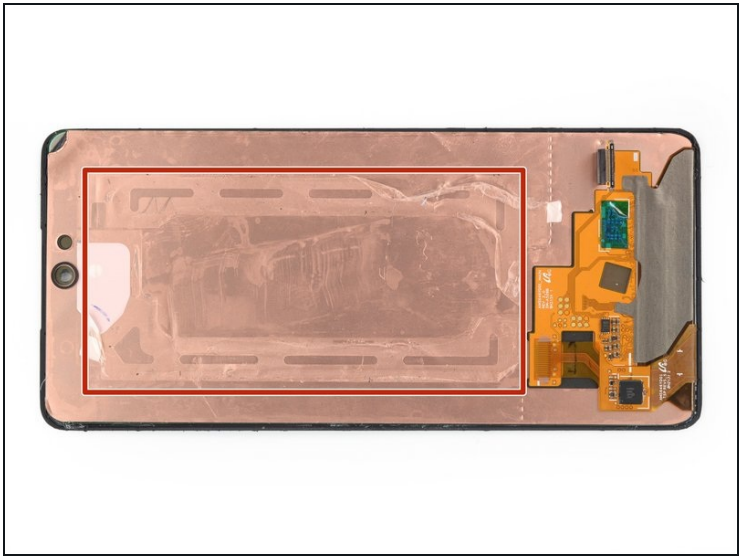
- Insert a fourth opening pick underneath the bottom left corner and slide it along the left edge of the phone to the top left corner.
- Leave the opening pick in its place to prevent the adhesive from resealing.

Step 19



- Insert a fifth opening pick underneath the top left corner and slide it along the top edge to cut the adhesive.
⚠ When you slice near the front facing camera, insert only the tip of the opening pick (about 3 to 4 mm) to avoid damaging or smearing the camera.

Step 20 — Reheat the screen



- Reapply a heated [iOpener](#) to the screen to loosen the adhesive underneath.
- In preparation for the following step, take note of the rectangular-shaped adhesive placed underneath the screen.

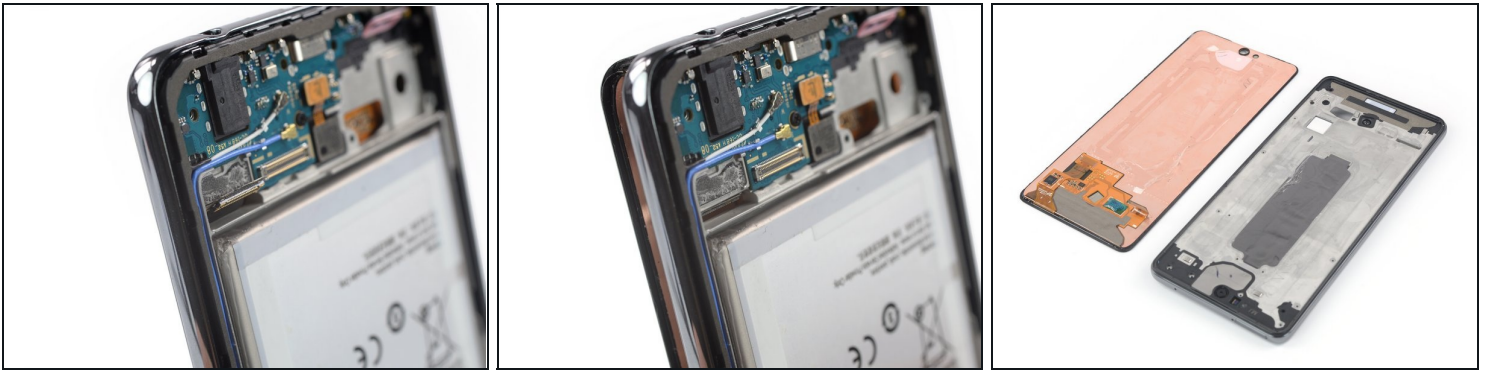
Step 21 — Insert the plastic card



- Insert a [plastic card](#) on the right edge into the gap between display and the phone assembly.
- Press the plastic card in and slide it back and forth until you cut through the entire adhesive.
- Once you are sure you cut through the adhesive, remove the four opening picks from the corners.

⚠ Do not remove the screen completely yet. The display cable is still threaded through the frame.

Step 22 — Remove the screen



- Carefully thread the screen cable through the frame.
 - Remove the screen.
 - ☑ Apply new adhesive where it's necessary after cleaning the relevant areas with isopropyl alcohol (>90%).
 - ☑ During reassembly, [follow this guide](#) in case you're using a pre-cut adhesive card.
-

If possible, turn on your device and test your repair before installing new adhesive and resealing.

Compare your new replacement part to the original part—you may need to transfer remaining components or remove adhesive backings from the new part before installing.

To reassemble your device, follow these instructions in reverse order. Apply new adhesive where necessary after cleaning the relevant areas with isopropyl alcohol (>90%).

The best way to secure the new screen is to apply a sheet of custom-cut double-sided tape to the back of the screen.

Take your e-waste to an [R2 or e-Stewards certified recycler](#).

Repair didn't go as planned? Try some [basic troubleshooting](#), or ask our [Answers community](#) for help.