



# Flir A600 Teardown

A fast tear down of an industrial Flir A600 Thermal camera; for general knowledge. A decade old model with even older internal parts.

Written By: smith



---

## INTRODUCTION

A fast tear down of an industrial Flir A600 Thermal camera; for general knowledge. A decade old model with even older internal parts.

First time using this platform. Final posted images got cropped more than wanted.



### TOOLS:

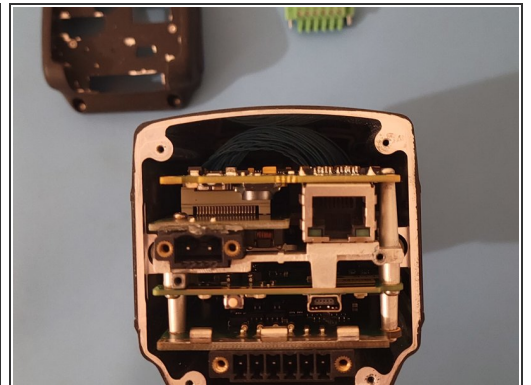
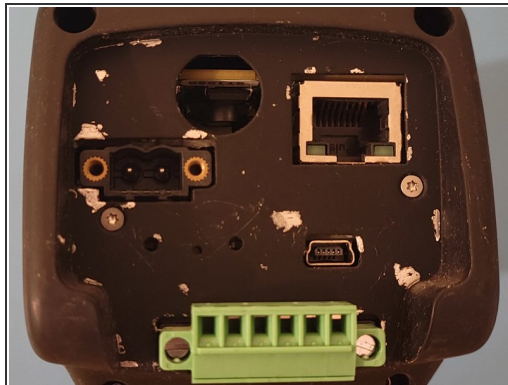
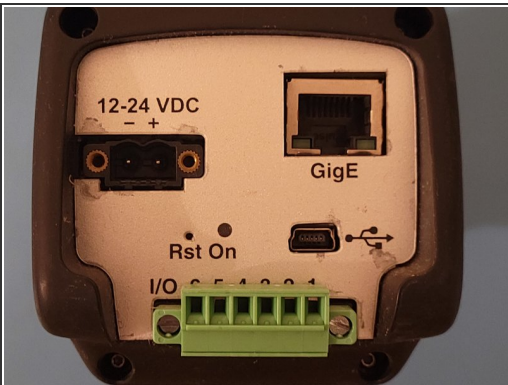
- [T6 Torx Screwdriver](#) (1)  
T-6
-

## Step 1 — Flir A600 Teardown



- whole unit; all screws are torque #6, the flat ones for just for moving stuff.

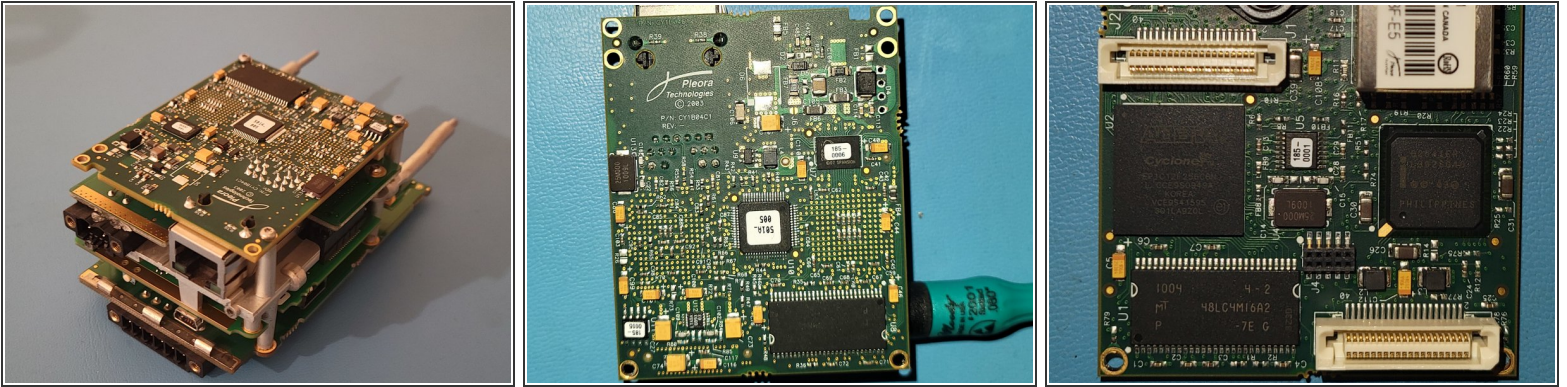
## Step 2



- rear cover

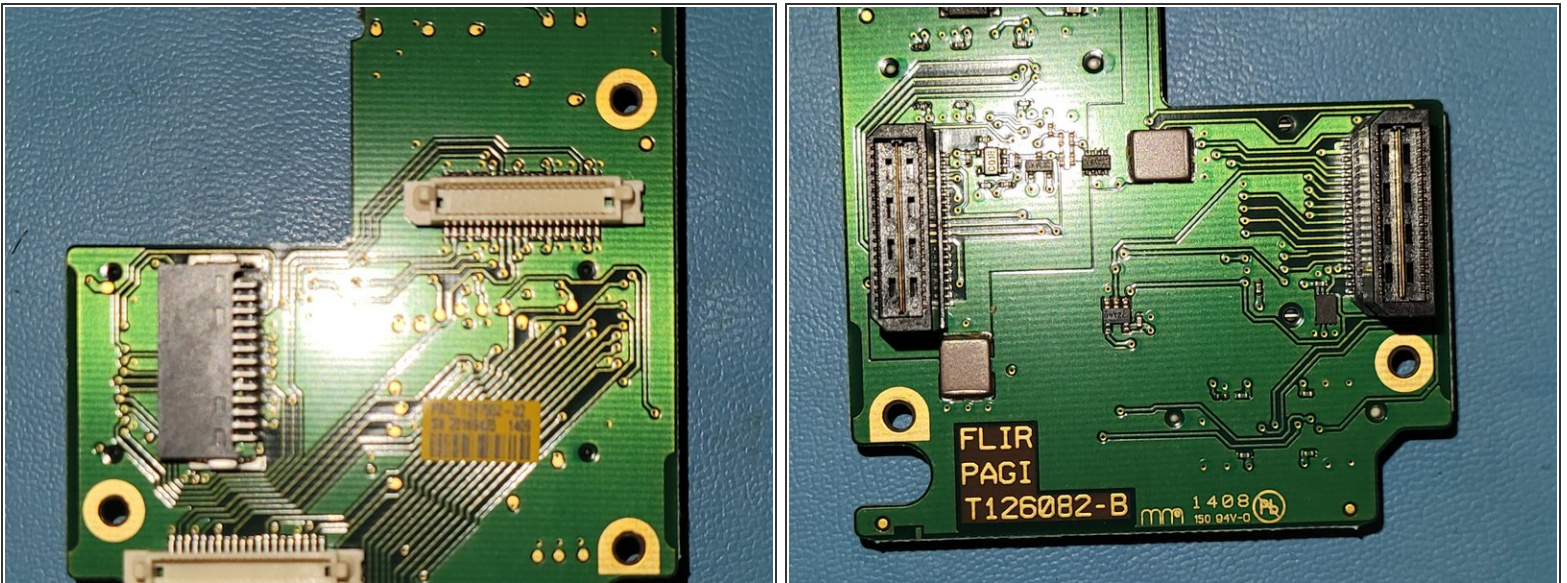


## Step 3



- control deck; this is my first time with this platform; cropping is an issue

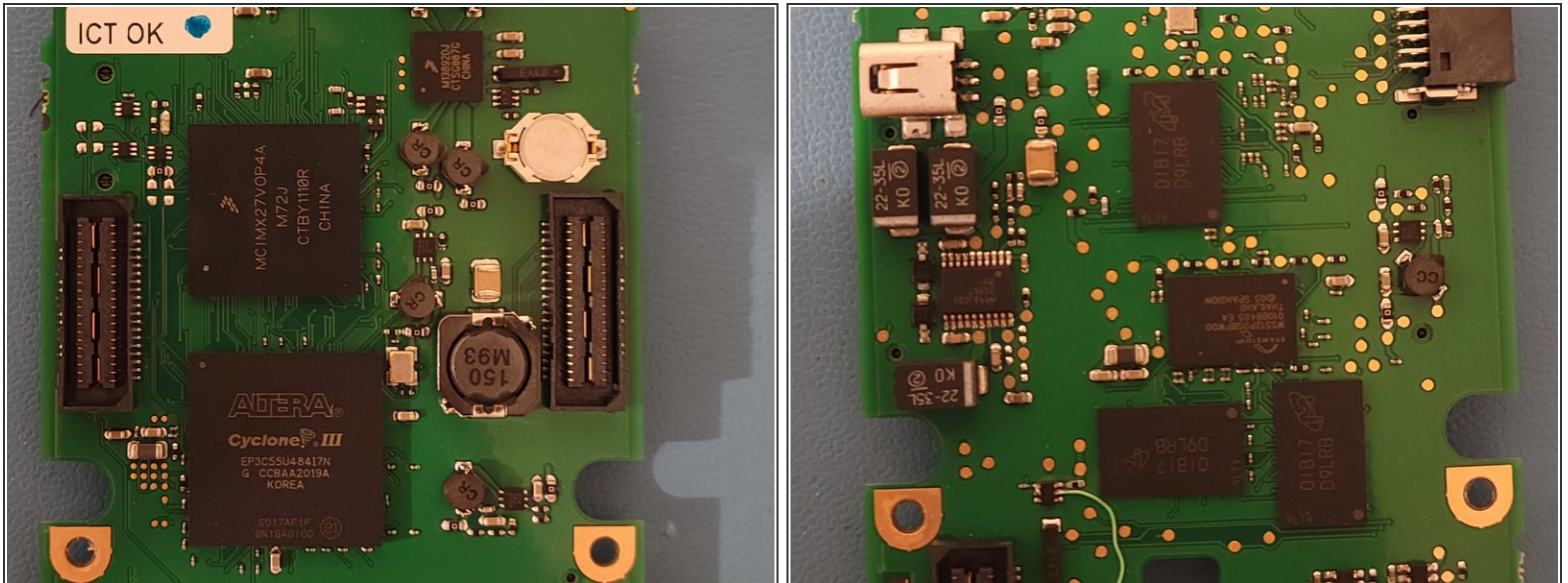
## Step 4



- power supply stuffs

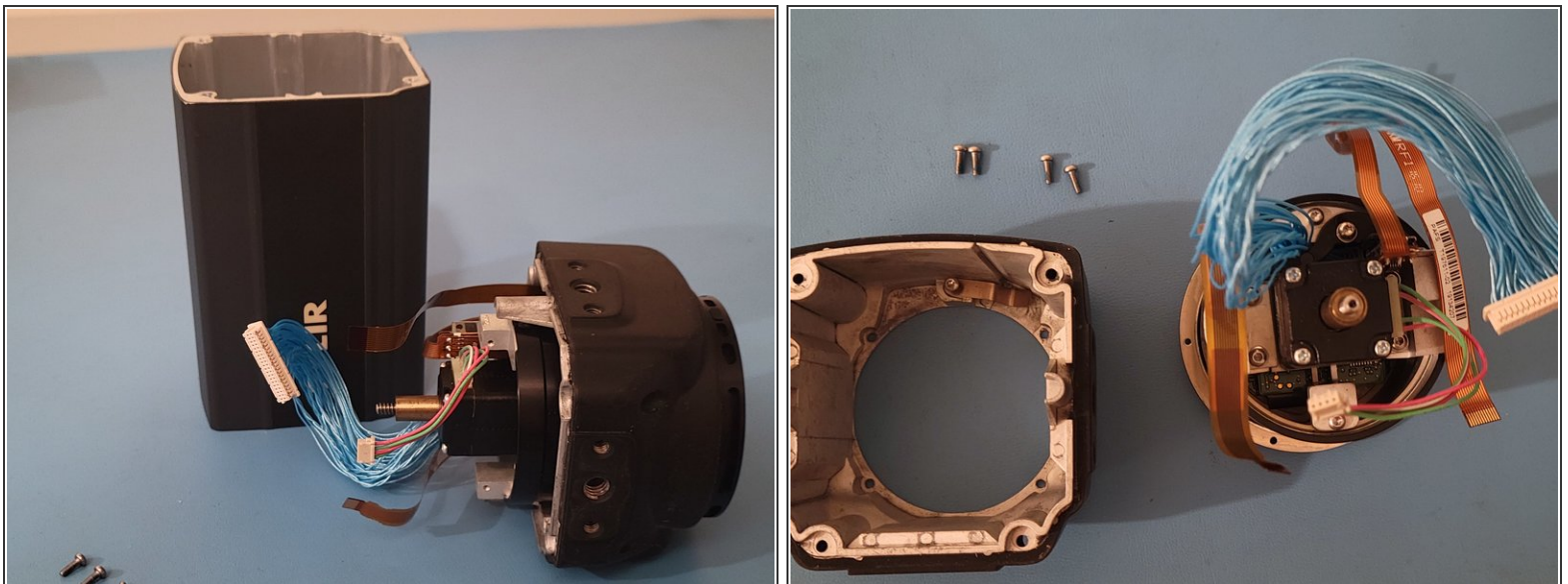


## Step 5



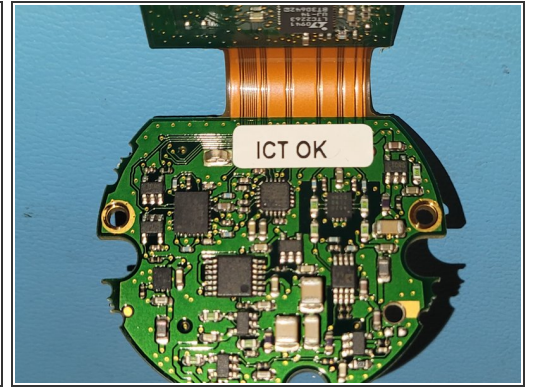
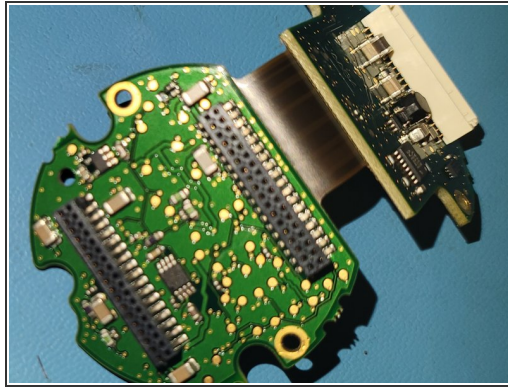
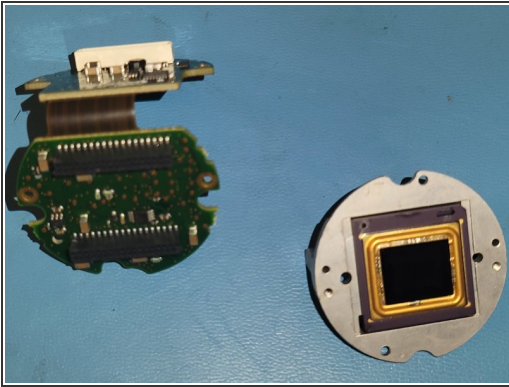
- main computer board, more cropping issues :/. all main chips in image.

## Step 6



- optic cluster removal

## Step 7



- sensor interface things.