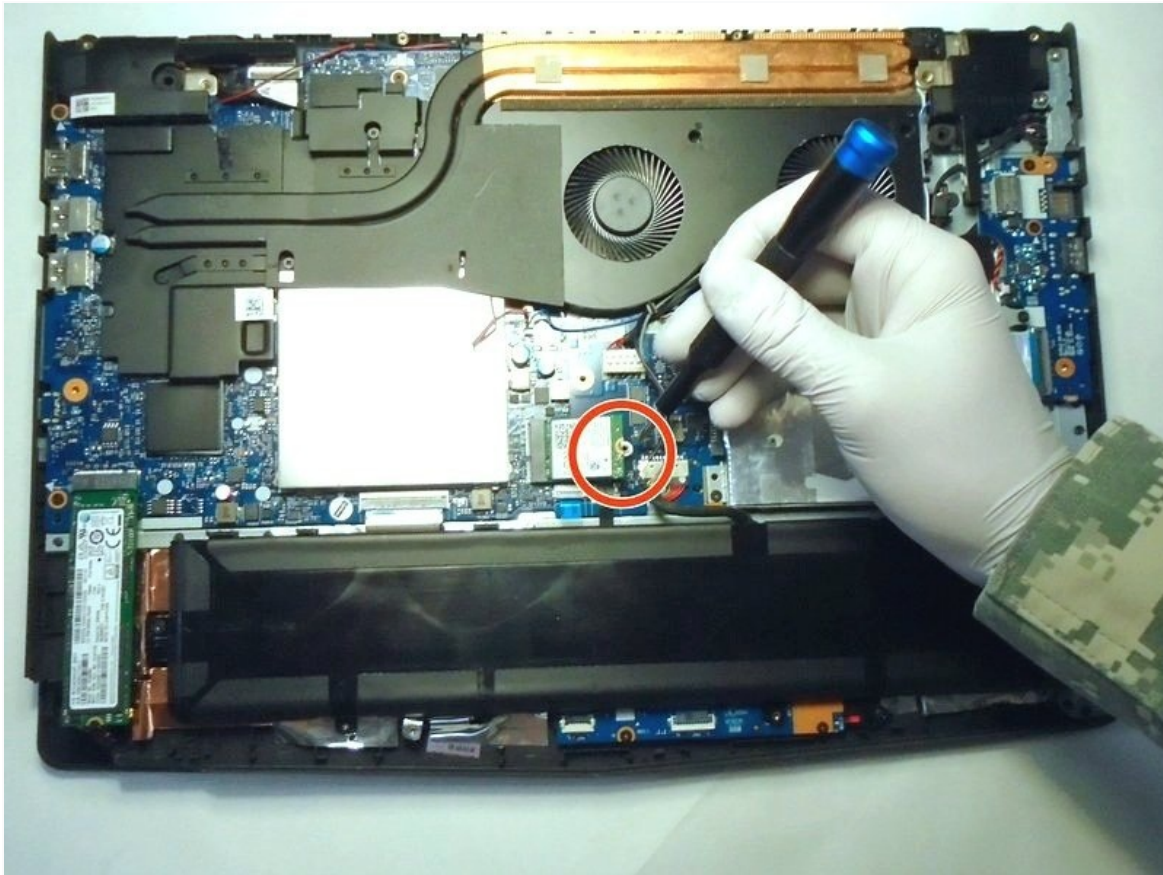




Lenovo Legion Y520-15IKBN Wi-Fi Card Replacement

Written By: Thomas Blayne Aycok



TOOLS:

Spudger (1)

Phillips #00 Screwdriver (1)

PARTS:

Lenovo 00JT497 Wireless Adapter
(1)

Lenovo 01AX704 Wireless Adapter
(1)

Step 1 — Base Panel



 **Shut down and unplug your device before proceeding.**

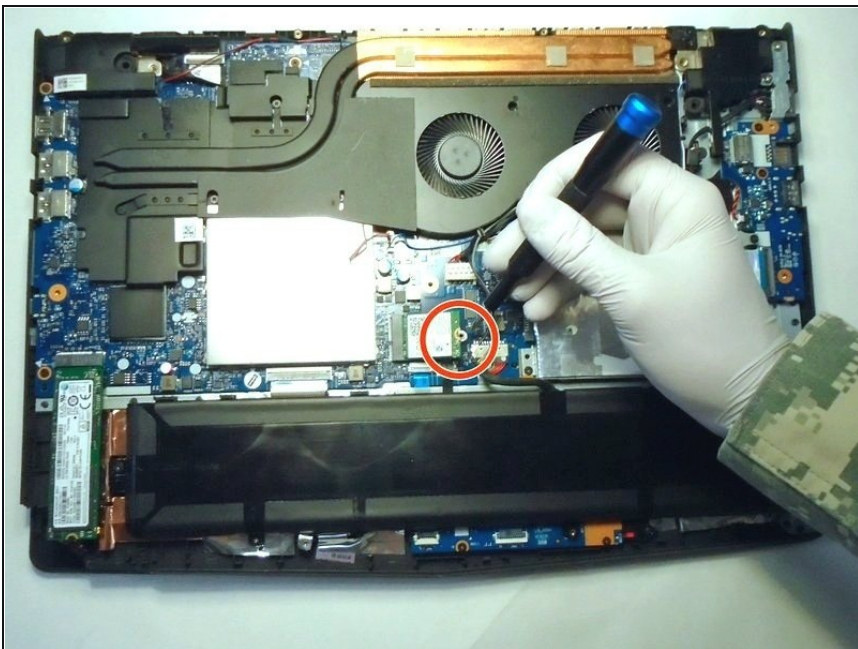
- Remove the thirteen 6.5 mm screws from the base plate using a Phillips #00 screwdriver.

Step 2



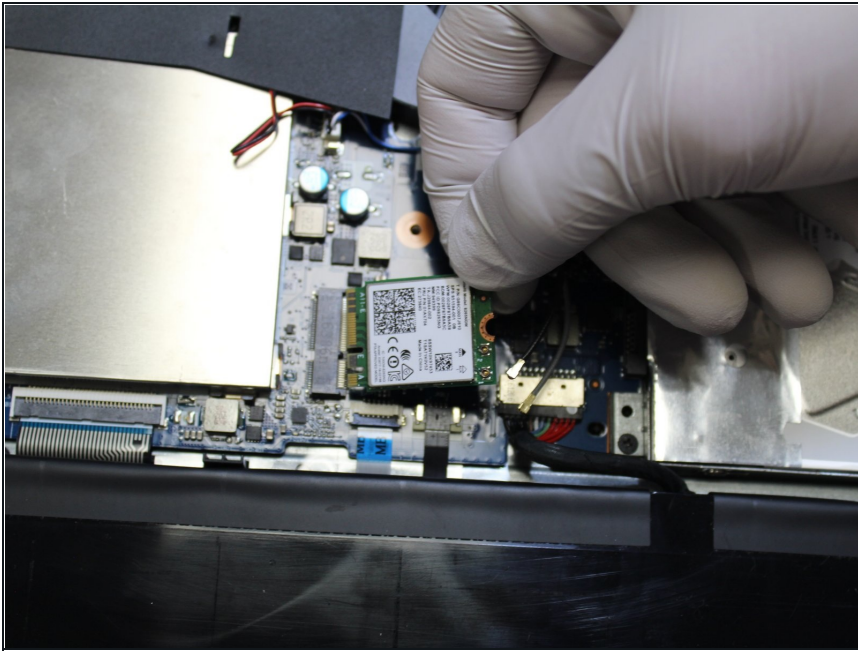
- Flip the laptop on its side and wedge a spudger between the base panel and chassis, then pry around the perimeter until the base panel releases.
 - ① To get a better grip you may want to open the laptop slightly.
- Lift the bottom panel off of the chassis.
 - ✦ During reassembly, make sure that the bottom panel clicks back into place on all four sides of the laptop.

Step 3 — Wi-Fi Card



- Use a Phillips #00 screwdriver to remove the single screw securing the Wi-Fi card.

Step 4



- Pull the Wi-Fi card directly out of its port.

To reassemble your device, follow these instructions in reverse order.