



LG G8 ThinQ Midframe Replacement

How to replace the midframe in an LG G8 ThinQ smartphone.

Written By: Kristen Gismondi

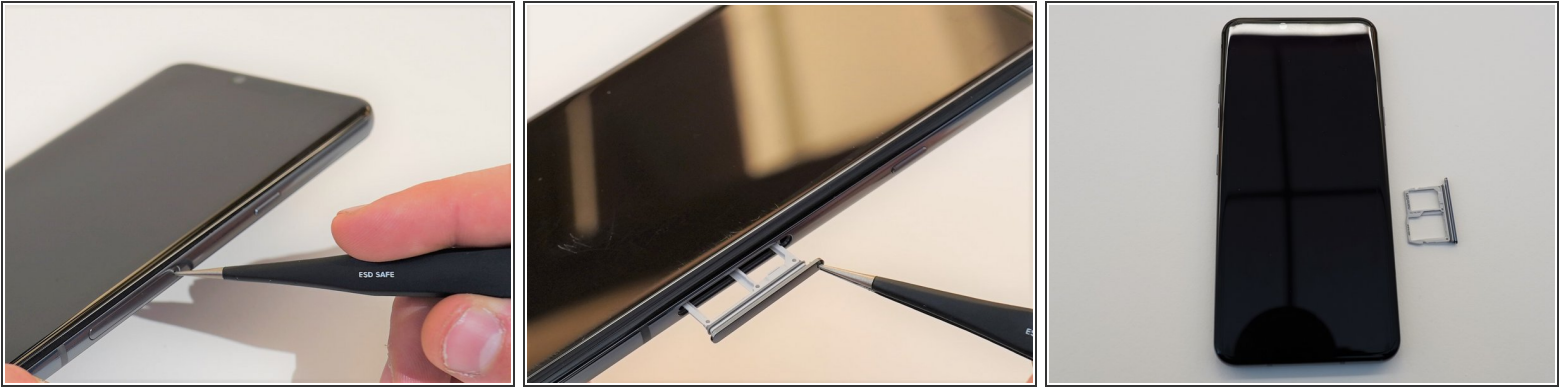




TOOLS:

- [SIM Card Eject Tool](#) (1)
- [iFixit Opening Tool](#) (1)
- [Plastic Cards](#) (1)
- [Phillips #000 Screwdriver](#) (1)

Step 1 — SIM Card Tray



- Unplug and power off your phone before you begin.
- Insert the SIM card eject tool into the pinhole in the lower right side of the phone.
- Remove the SIM card and tray.

Step 2 — Back Panel



- Place the phone so that the screen is facing down.
- Insert opening cards between the back panel and frame of the phone to loosen the clips and adhesive.
- Using equal pressure, carefully pry the back panel away from the phone.
- Once enough space has been created, use an opening tool to completely separate the back panel from the phone.

Step 3 — Midframe



- Remove all 14 screws from the midframe using a Phillips #000 screwdriver.
- Work an opening tool around the perimeter of the midframe to pry and remove it from the phone.

To reassemble your device, follow these instructions in reverse order.