



LG G8 ThinQ Back Panel Replacement

How to replace the back panel on an LG G8 ThinQ smartphone.

Written By: Kristen Gismondi

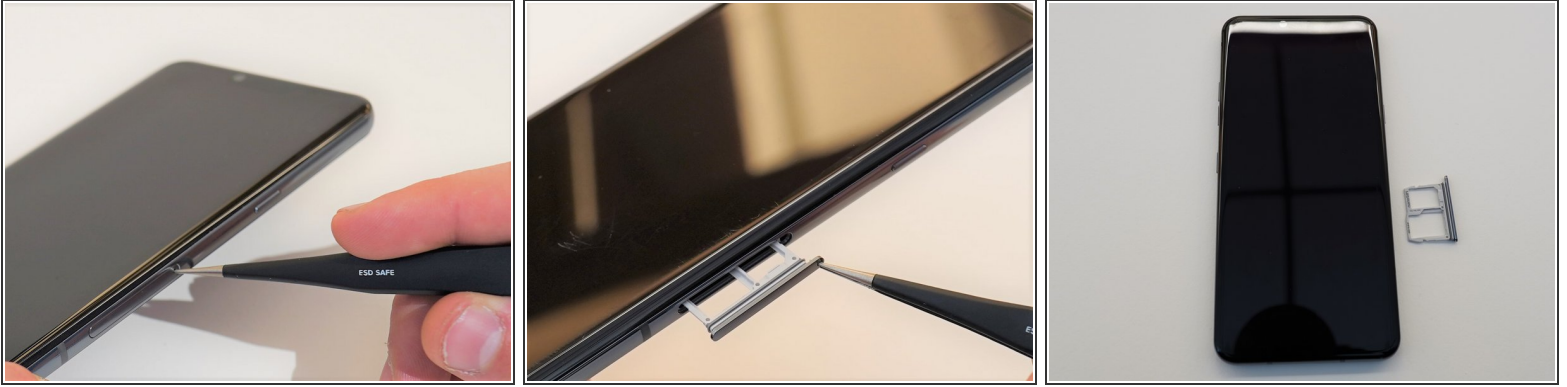




TOOLS:

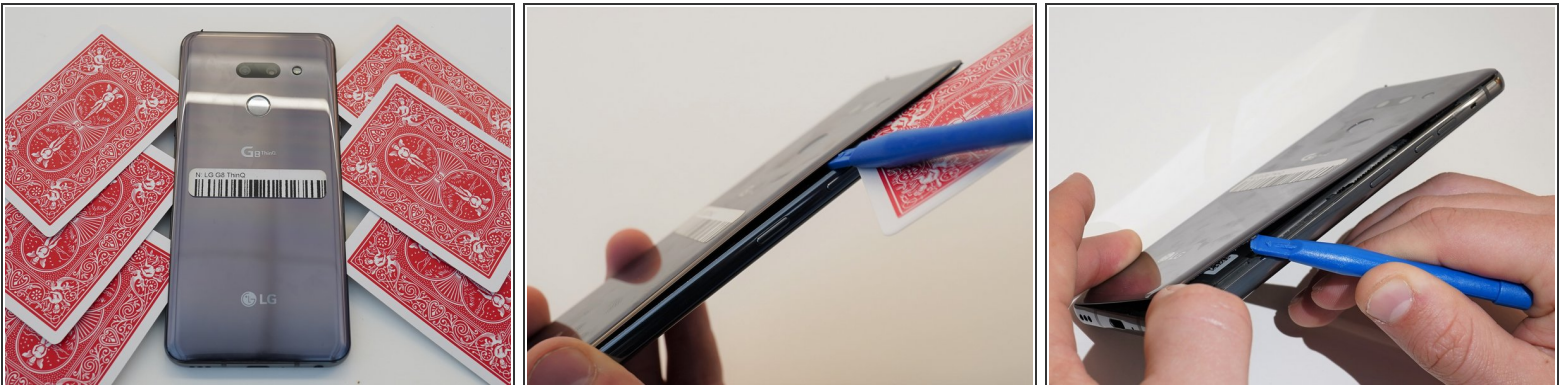
- [SIM Card Eject Tool](#) (1)
 - [iFixit Opening Tool](#) (1)
 - [Plastic Cards](#) (1)
-

Step 1 — SIM Card Tray



- Unplug and power off your phone before you begin.
- Insert the SIM card eject tool into the pinhole in the lower right side of the phone.
- Remove the SIM card and tray.

Step 2 — Back Panel



- Place the phone so that the screen is facing down.
- Insert opening cards between the back panel and frame of the phone to loosen the clips and adhesive.
- Using equal pressure, carefully pry the back panel away from the phone.
- Once enough space has been created, use an opening tool to completely separate the back panel from the phone.

To reassemble your device, follow these instructions in reverse order.