



LG G8 ThinQ SIM Card Tray Replacement

How to replace the SIM card and tray in an LG G8 ThinQ smartphone.

Written By: Kristen Gismondi

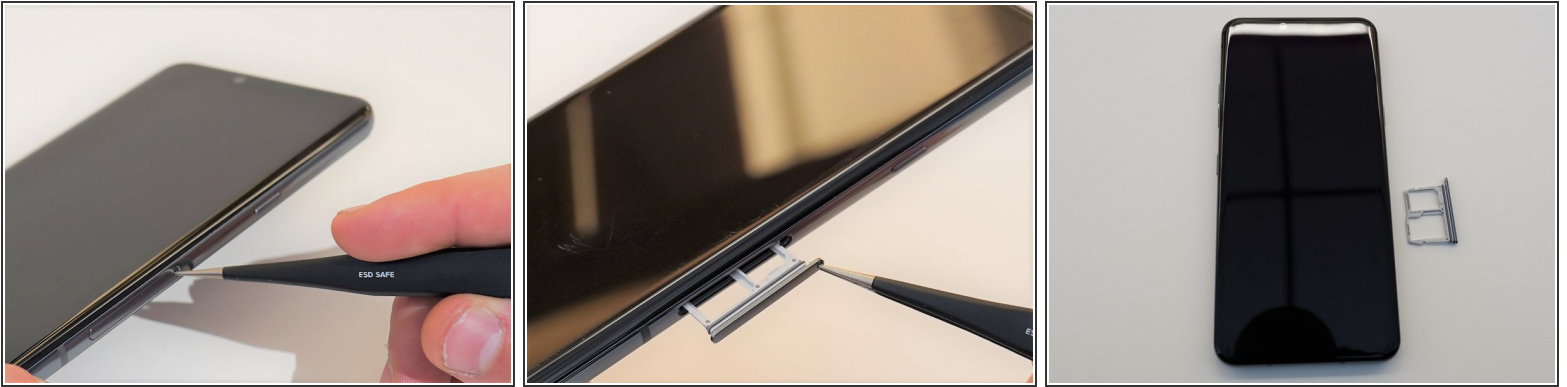




TOOLS:

- [SIM Card Eject Tool](#) (1)
-

Step 1 — SIM Card Tray



- Unplug and power off your phone before you begin.
- Insert the SIM card eject tool into the pinhole in the lower right side of the phone.
- Remove the SIM card and tray.

To reassemble your device, follow these instructions in reverse order.