



Drum Head Replacement

This guide will teach you to be able to properly replace a drum head, and tune your drum like the professionals.

Written By: Daniel Barry



INTRODUCTION

If your drum head is starting to look worn out or is losing the fullness of its sound, it may be time to replace it. Experienced drummers recommend replacing drum heads every six months or so, and always before recording drums in the studio. Luckily, this is a very straightforward process. This guide will provide you with simple but thorough step-by-step instructions on how to replace your drum head. Once your new drum head has been successfully installed, you can utilize the guide's professional advice on proper tuning techniques to optimize and customize the sound of your new drum head.



TOOLS:

- [Universal Drum Key](#) (1)
-

Step 1 — Drum Head



- Loosen the tension rods until all rods are free from the drum.
- ⓘ The tension rods are universal for all drums and drum sets.

Step 2



- Remove the rim and drum head.
- ⓘ Keep track of the tension rods by leaving them in their holders on the rim.

Step 3



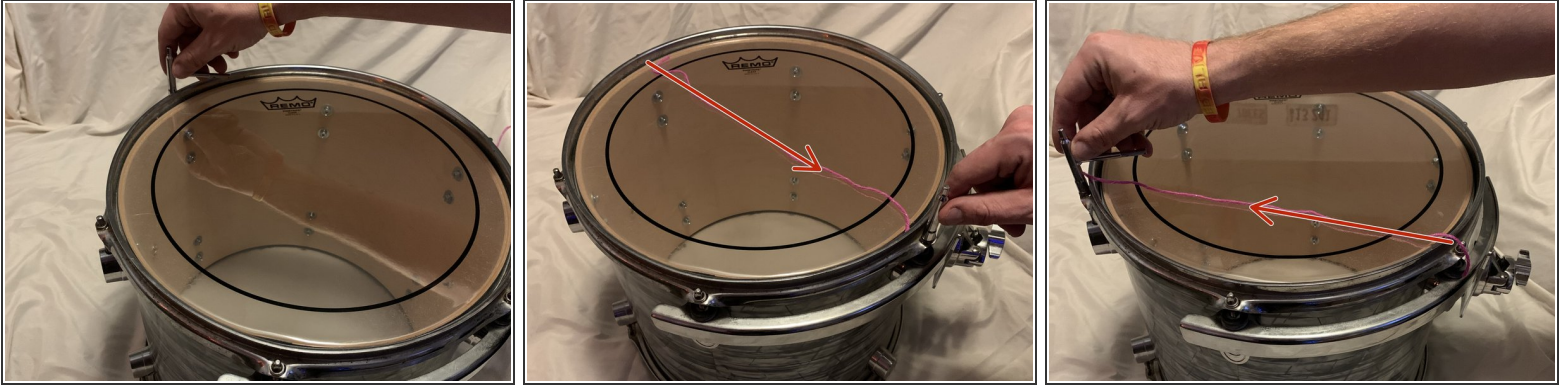
- Put on the new drum head first.
- Put the rim on, making sure that the tension rods are properly aligned.

Step 4



- Tighten the tension rods with your fingers until you begin to feel tension.
- ⚠ You do not want them completely tightened yet. You just want to make sure the head is not wrinkled.**

Step 5



- Begin to tighten the tension rods in a star pattern using a drum key.

⚠ Do not tighten the tension rods in a clockwise or counter clockwise pattern.

- Tighten the rods until you find the sound you want from the drum.

Step 6



- While tightening the tension rods, tap a drumstick on the drum head about an inch from the tension rods.
- ⓘ This is how you will determine which tension rods need to be tightened, loosened, or left alone.

Step 7



- Once you have found the sound you like and the drum is in tune, push around the middle of the drum head, moving around the drum.
- Repeat Steps 6 and 7 until the drum is in tune again.

To reassemble your device, follow these instructions in reverse order.