



LG G8 ThinQ Front Cameras Replacement

This guide details the steps needed to replace the two front-facing cameras in an LG G8 ThinQ.

Written By: Josh Cress



INTRODUCTION

This guide will instruct how to replace the two front-facing cameras in an LG G8 ThinQ. You may want to replace these cameras if they are not working or have quality issues. Refer to our [troubleshooting page](#) to decide if this is the right repair for you.

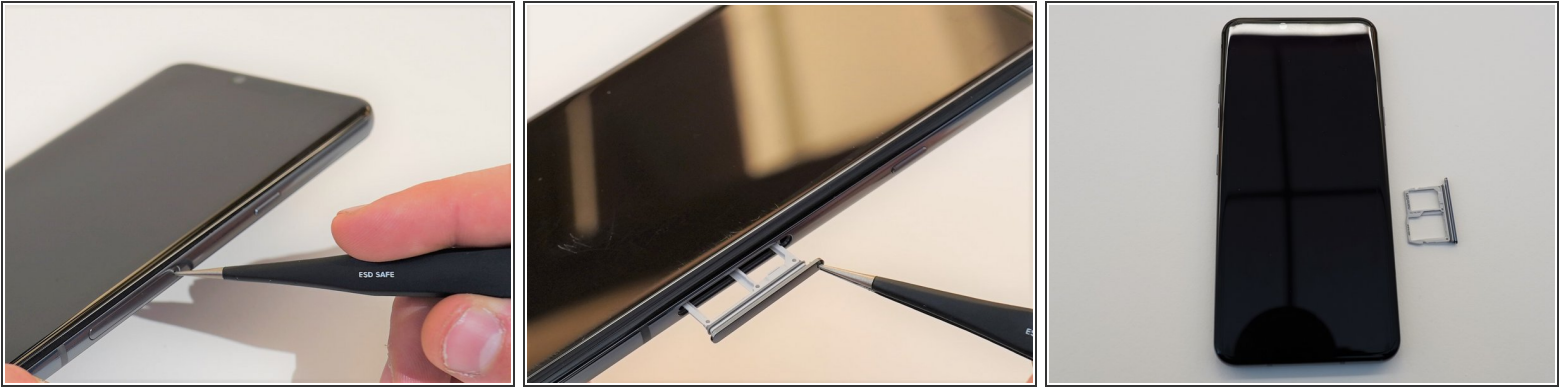
This phone uses adhesive to increase the seal of the rear panel; this can be replaced to closer replicate factory fit and finish.



TOOLS:

- [SIM Card Eject Tool](#) (1)
 - [iFixit Opening Tool](#) (1)
 - [iFixit Opening Picks \(Set of 6\)](#) (1)
 - [Phillips #000 Screwdriver](#) (1)
 - [Plastic Cards](#) (1)
-

Step 1 — SIM Card Tray



- Unplug and power off your phone before you begin.
- Insert the SIM card eject tool into the pinhole in the lower right side of the phone.
- Remove the SIM card and tray.

Step 2 — Back Panel



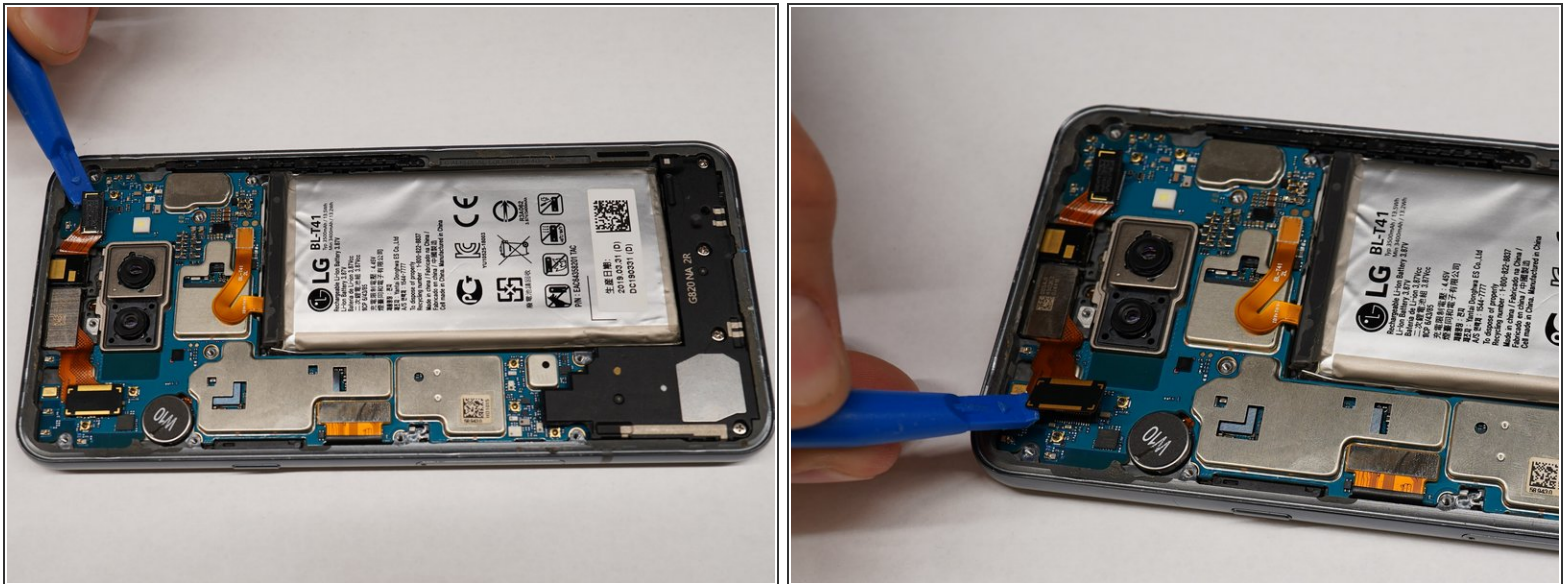
- Place the phone so that the screen is facing down.
- Insert opening cards between the back panel and frame of the phone to loosen the clips and adhesive.
- Using equal pressure, carefully pry the back panel away from the phone.
- Once enough space has been created, use an opening tool to completely separate the back panel from the phone.

Step 3 — Midframe



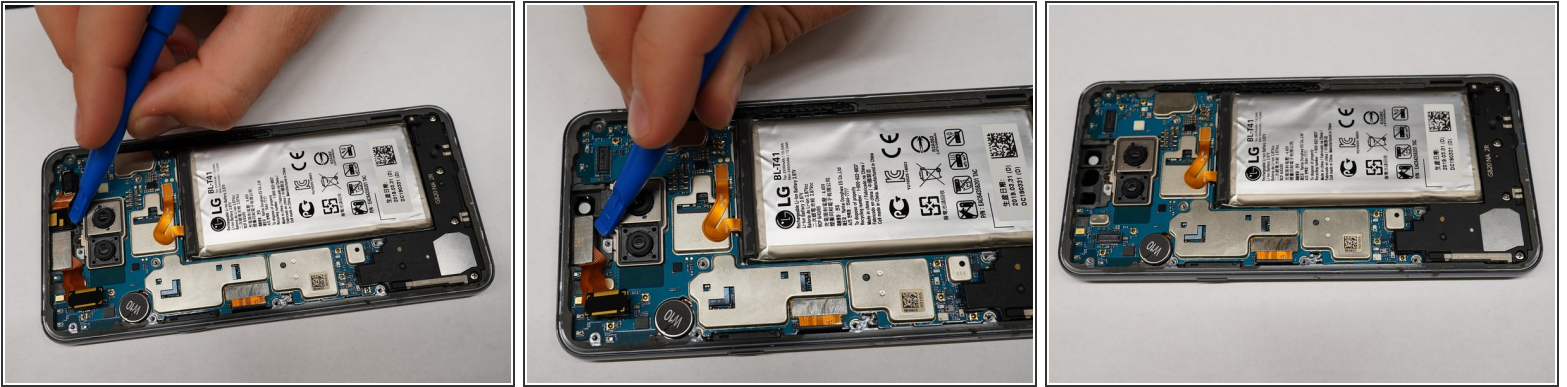
- Remove all 14 screws from the midframe using a Phillips #000 screwdriver.
- Work an opening tool around the perimeter of the midframe to pry and remove it from the phone.

Step 4 — Front Cameras



- Using an opening tool, carefully disconnect the ribbon cables from both cameras.

Step 5



- Using an opening tool, carefully pry up and remove both cameras from the phone casing.

To reassemble your device, follow these instructions in reverse order.