



Mi 11 Screen Replacement

How to replace a cracked or broken screen on your Xiaomi Mi 11.

Written By: Dominik Schnabelrauch



INTRODUCTION

Use this guide to remove or replace the screen on your Xiaomi Mi 11.

If the frame is deformed, it's important to replace it to make sure the new screen will mount correctly and won't suffer damage from uneven pressure.

Note: This guide instructs you to replace only the screen while leaving the original frame and motherboard in place. However, some replacement screens for this phone come pre-installed in a new frame (a.k.a. chassis), which requires a very different procedure. Make sure you have the correct part before starting this guide.

Before you begin this procedure, be sure to have a set of replacement adhesives for both the back panel and the screen.

Note: In this guide we're using a [teardown device](#). This means that the motherboard has been deshielded during the teardown procedure. You can still do all the repairs with this guide but your motherboard will look [like this](#).



TOOLS:

- [iOpener](#) (1)
- [Suction Handle](#) (1)
- [iFixit Opening Picks \(Set of 6\)](#) (1)
- [Isopropyl Alcohol \(90% or Greater\)](#) (1)

optional

- [Microfiber Cleaning Cloths](#) (1)

optional

- [Heat Gun](#) (1)

optional

- [Phillips #00 Screwdriver](#) (1)
- [Spudger](#) (1)
- [ESD Safe Tweezers Blunt Nose](#) (1)



PARTS:

- [Precut Adhesive Card](#) (1)

optional

- [iFixit Adhesive Remover \(for Battery, Screen, and Glass Adhesive\)](#) (1)

optional

Step 1 — Heat the rear glass



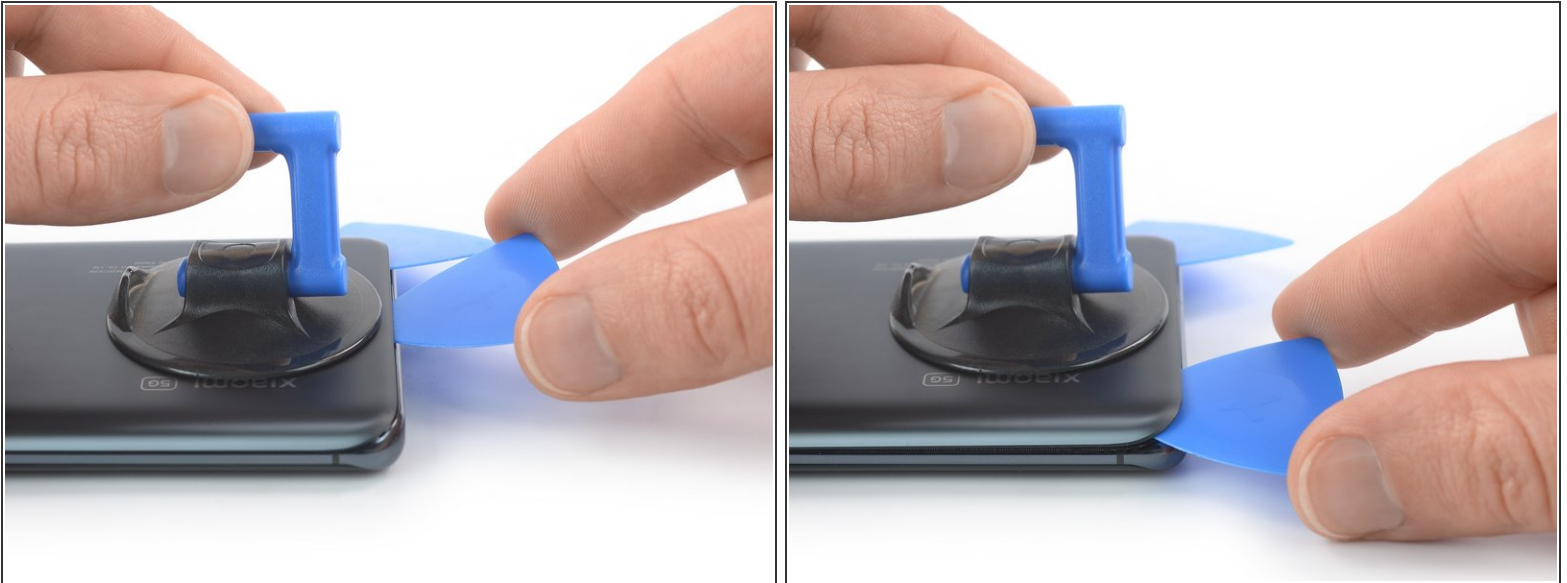
- [Prepare an iOpener](#) and apply it to the rear glass for at least two minutes to loosen the adhesive underneath.
- ⓘ A hair dryer, heat gun, or hot plate may also be used, but be careful not to overheat the phone—the display and internal battery are both susceptible to heat damage.

Step 2 — Insert an opening pick



- Secure a suction handle to the bottom edge of the rear glass, as close to the edge as possible.
 - ❗ If the rear glass is cracked, the suction handle may not stick. Try [lifting it with strong tape](#), or superglue the suction handle in place and allow it to cure so you can proceed.
- Lift the back cover with the suction handle to create a small gap between the back cover and the frame.
 - ❗ In case you have trouble creating a gap, apply more heat to further soften the adhesive. Follow the [iOpener](#) instructions to avoid overheating.
- Insert an opening pick into the gap you created.
- Slide the opening pick to the bottom right corner to slice the adhesive.
- Leave the opening pick in place to prevent the adhesive from resealing.


Step 3 — Slice the adhesive



- Insert a second opening pick at the bottom edge of your phone.
- Slide the opening pick to the bottom left corner to slice the adhesive.
- Leave the opening pick in place to prevent the adhesive from resealing.

Step 4 — Slice the adhesive



 If the adhesive becomes hard to cut, it has most likely cooled down. [Use your iOpener](#) to reheat it.

- Insert a third opening pick at the bottom left corner of your phone.
- Slide the opening pick along the left edge of your Xiaomi Mi 11 to slice the adhesive.
- Leave the opening pick in the top left corner to prevent the adhesive from resealing.

Step 5



- Insert a fourth opening pick underneath the top left corner of your phone.
- Slide the opening pick along the top edge to slice the adhesive.
- Leave the opening pick in the top right corner to prevent the adhesive from resealing.

Step 6



- Insert a fifth opening pick underneath the top right corner.
- Slide the opening pick along the right edge of the rear glass to slice the remaining adhesive.

Step 7 — Remove the rear glass



- Remove the rear glass.
- ✦ Apply new adhesive where necessary after cleaning the relevant areas with isopropyl alcohol (>90%).
- ✦ [Secure the new rear glass with pre-cut adhesive](#) or double-sided adhesive tape. After installing the rear glass, apply strong, steady pressure to your phone for several minutes to help the adhesive form a good bond—a stack of heavy books works well.

Step 8 — Unfasten the metal bracket screws



- Use a Phillips screwdriver to remove the screws securing the connector metal bracket and the camera cover:
 - Two 4.4 mm-long screws
 - One 4.9 mm-long screw
 - Two 3.9 mm-long screws

Step 9 — Remove the metal bracket



- Use a pair of tweezers to remove the connector bracket by pulling it in the direction of the battery.

Step 10 — Disconnect the flash assembly



- Use the pointed end of a spudger to disconnect the flash assembly cable by prying the connector straight up from its socket.

Step 11 — Disconnect the right battery cable



- i** The battery of the Xiaomi Mi 11 has two separate flex cables. You need to disconnect both in order to disconnect the battery completely.
- Use a spudger to disconnect the right battery cable by prying the connector straight up from its socket.

Step 12 — Remove the camera cover



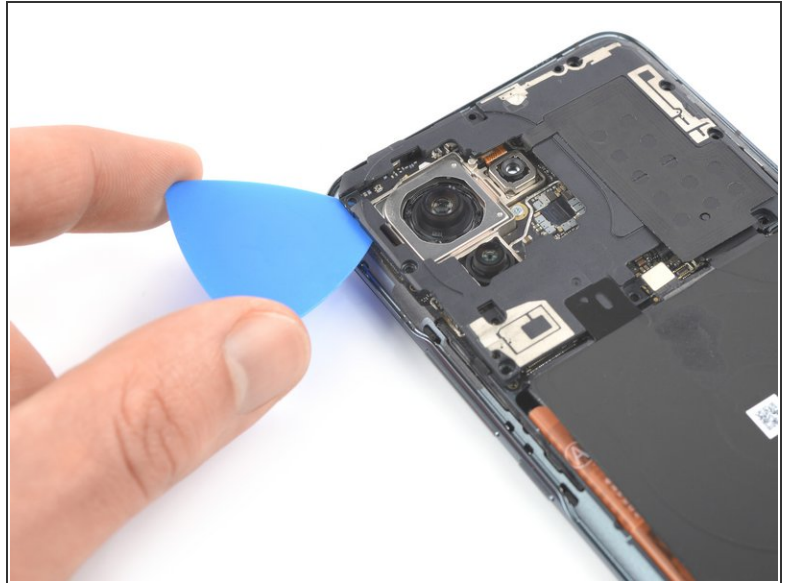
- Use your fingers or a pair of tweezers to carefully lift the camera cover including the flash assembly off the camera lenses and remove it.

Step 13 — Unfasten the motherboard cover screws



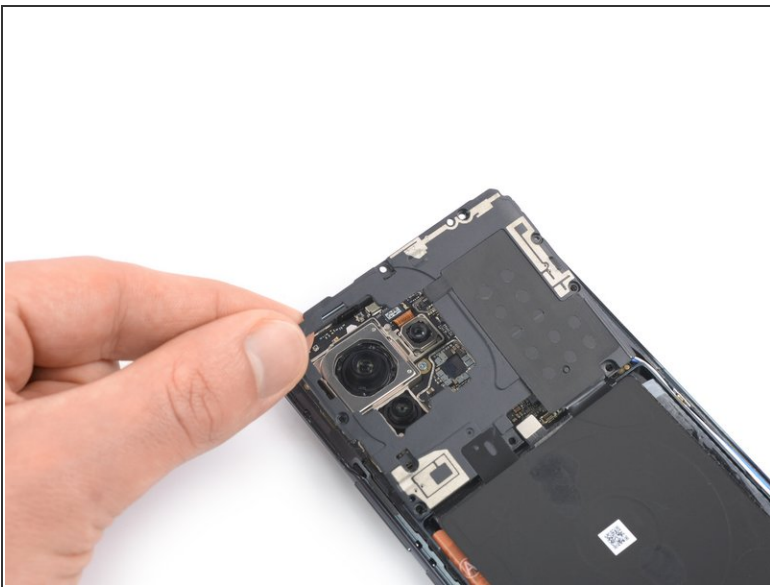
- Use a Phillips screwdriver to remove the five 3.9 mm-long screws securing the motherboard cover.

Step 14 — Pry up the motherboard cover



- Insert an opening pick underneath the bottom left edge of the motherboard cover.
- Slide the opening pick along the left edge of the motherboard cover and pry it up.

Step 15 — Remove the motherboard cover



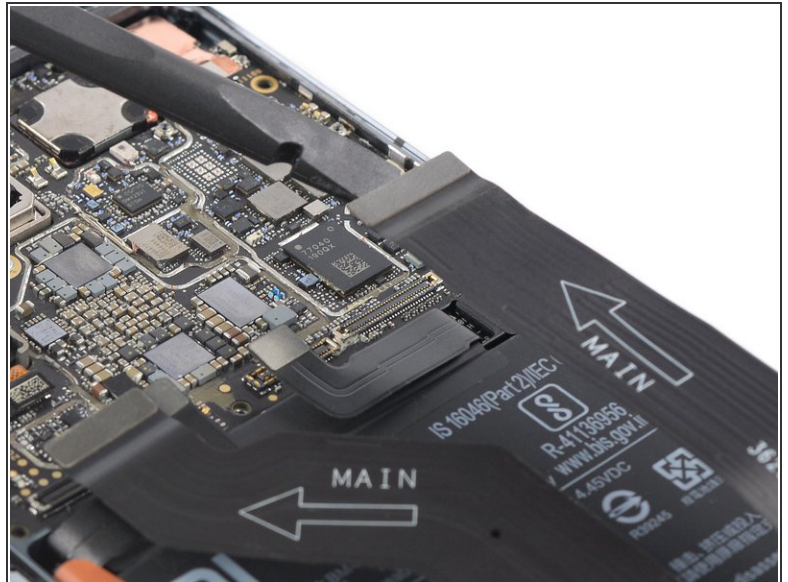
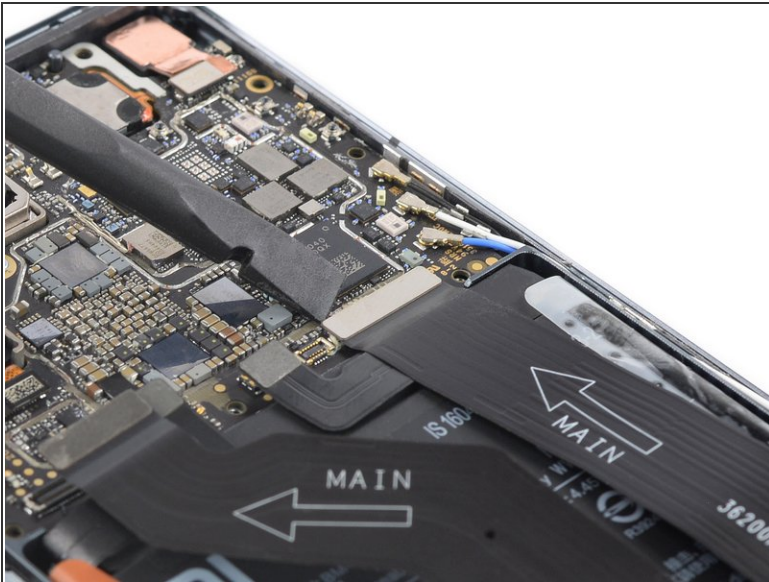
- Remove the motherboard cover.

Step 16 — Disconnect the left battery cable



- Use a spudger to disconnect the left battery cable by prying the connector straight up from its socket.

Step 17 — Disconnect the right interconnect cable



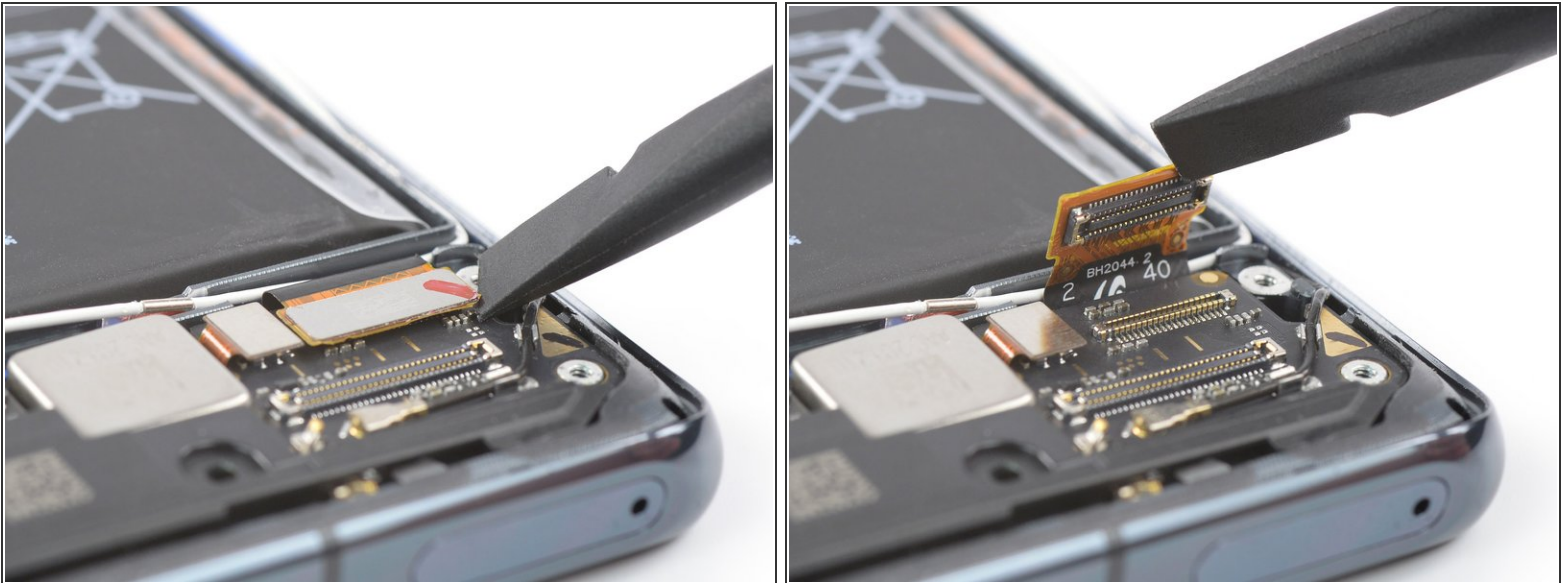
- Use a spudger to disconnect the right interconnect cable from the motherboard by prying the connector straight up from its socket.

Step 18 — Remove the right interconnect cable



- Use a spudger to disconnect the right interconnect cable from the daughterboard by prying the connector straight up from its socket.
- Remove the right interconnect cable.

Step 19 — Disconnect the display flex cable



- Use a spudger to disconnect the display flex cable by prying the connector straight up from its socket.

Step 20 — Loosen the display adhesive



- Apply a [heated iOpener](#) or a heat gun to the screen for **two minutes** to loosen the adhesive underneath.

Step 21 — Insert an opening pick



- Once the screen is warm to the touch, apply a suction cup to the bottom edge of the phone.
 - ❗ If your screen is badly cracked, covering it with a layer of clear packing tape may allow the suction cup to adhere. Alternatively, [very strong tape](#) may be used instead of the suction cup. If all else fails, you can superglue the suction cup to the screen.
- Lift the screen with the suction handle to create a small gap between the screen and the frame.
- Insert an opening pick in the gap between the midframe and the screen.
- Slide the opening pick to the bottom right corner of the screen to slice its adhesive. Leave the opening pick in place to prevent the adhesive from resealing.

Step 22 — Slice the adhesive



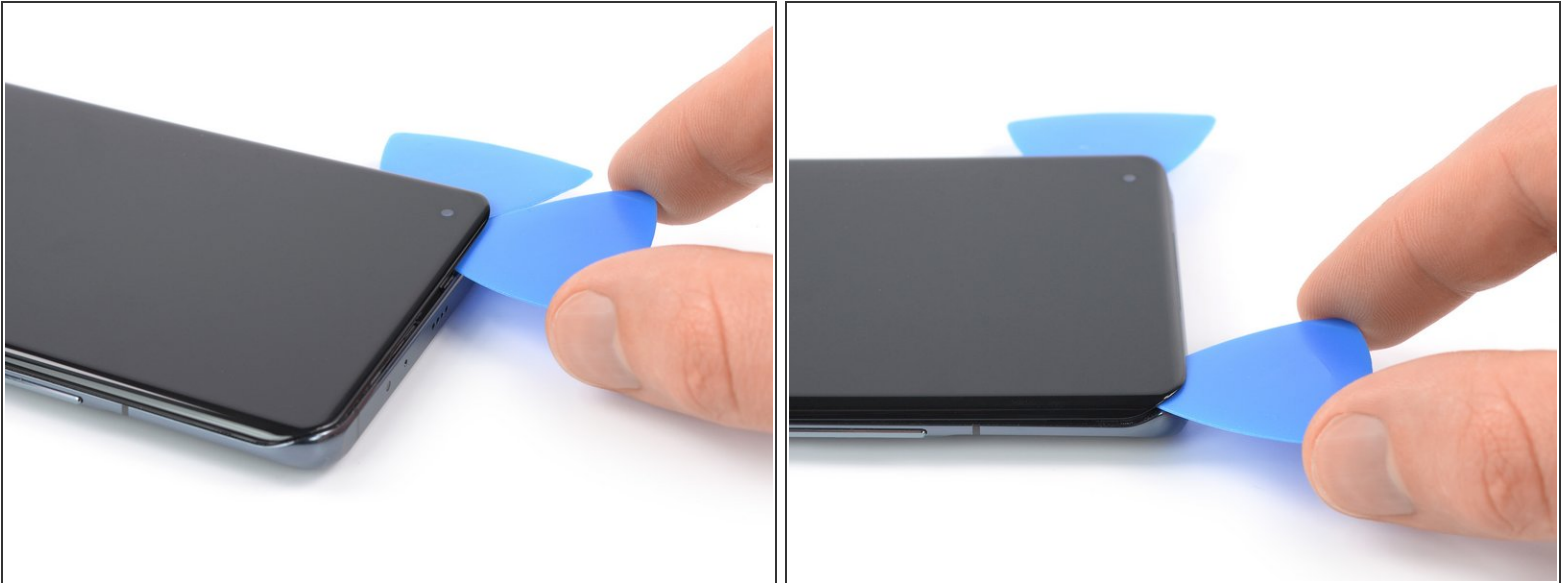
- Insert a second opening pick and slide it to the bottom left corner of the screen to cut the adhesive.
- Leave the opening picks in place to prevent the adhesive from resealing.

Step 23



- i** If the adhesive becomes hard to cut, it has most likely cooled down. [Use your iOpener](#) or heat gun to for 1-2 minutes to reheat it.
- Insert a third opening pick underneath the bottom left corner of the screen.
 - Slide the opening pick along the left edge of the screen to slice the adhesive. Leave it in the top left corner to prevent the adhesive from resealing.

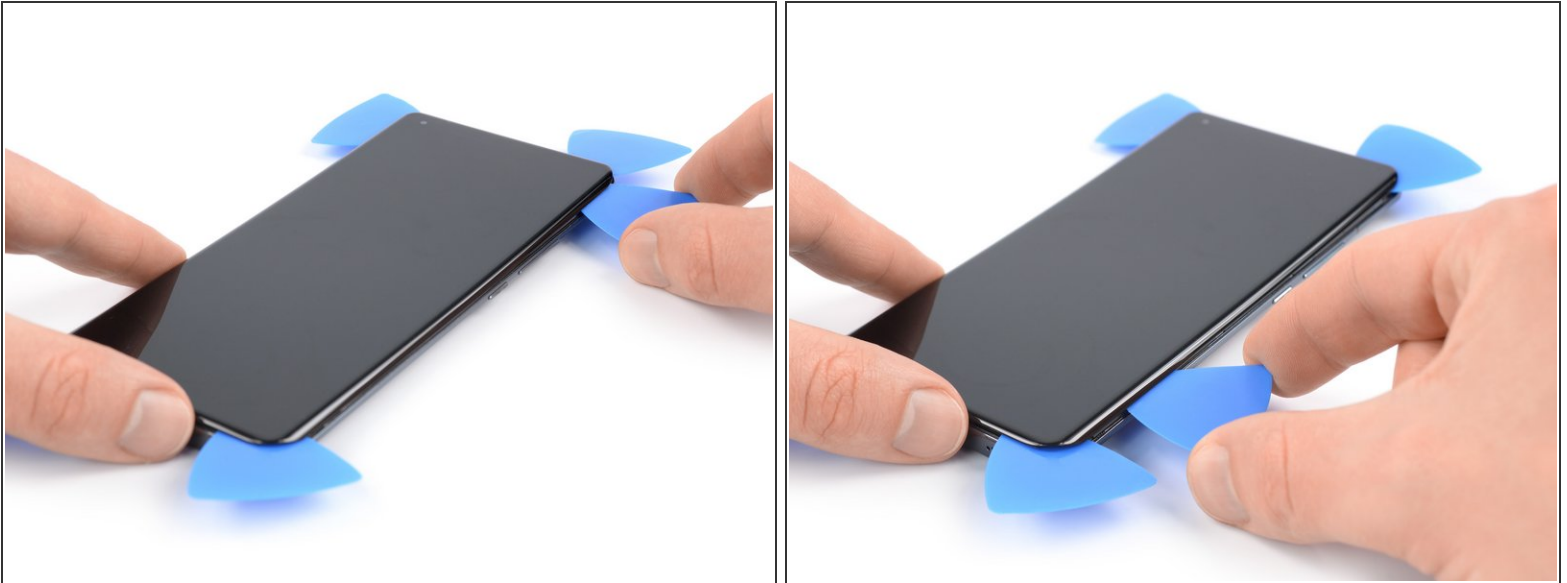
Step 24



⚠ When you slice near the front facing camera, insert only the tip of the opening pick to avoid damaging or smearing the camera.

- Insert a fourth opening pick at the top left corner of the screen.
- Slide the opening pick along the top edge of the phone to slice the adhesive.
- Leave the opening pick in the top right corner of the screen to prevent the adhesive from resealing.

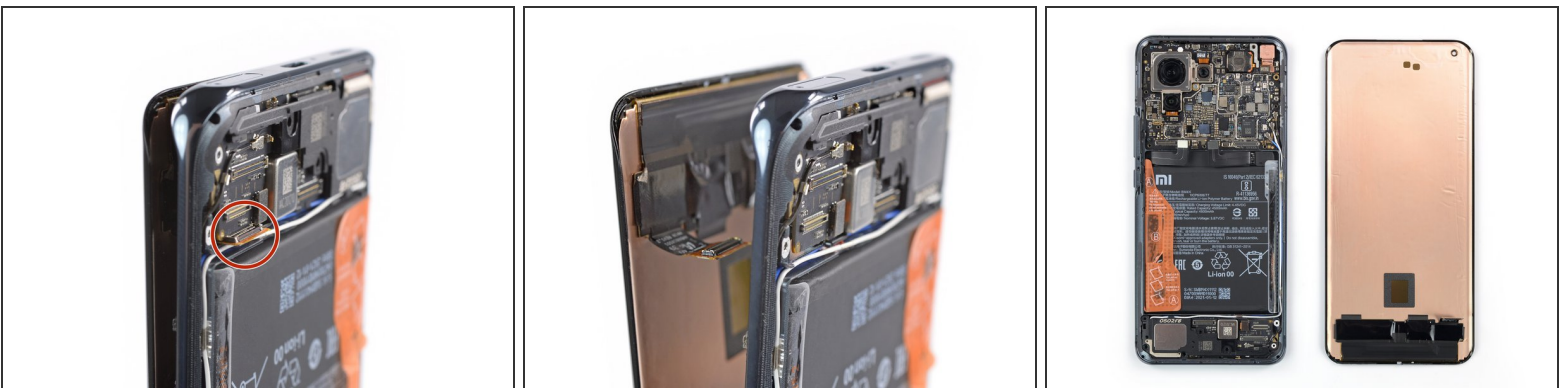
Step 25



- Insert a fifth opening pick and slide it along the right edge of the phone to slice the remaining adhesive.

⚠ Do not try to remove the display all the way yet, the display cable is still threaded through the frame.

Step 26 — Remove the screen



- Thread the display flex cable through the gap in the midframe and remove the screen.
- ☑ Apply new adhesive where it's necessary after cleaning the relevant areas with isopropyl alcohol (>90%).
- ☑ During reassembly, [follow this guide](#) in case you're using a pre-cut adhesive card.

If possible, turn on your device and test your repair before installing new adhesive and resealing.

Compare your new replacement part to the original part—you may need to transfer remaining components or remove adhesive backings from the new part before installing.

To reassemble your device, follow the above steps in reverse order.

Take your e-waste to an [R2 or e-Stewards certified recycler](#).

Repair didn't go as planned? Try some [basic troubleshooting](#), or ask our [Answers community](#) for help.