



Mi 11 Rear Glass Replacement

How to replace the rear glass of a Xiaomi Mi 11.

Written By: Dominik Schnabelrauch



INTRODUCTION

Use this guide to replace the rear glass on your Xiaomi Mi 11.

You'll need replacement adhesive to reattach components when reassembling the device.

Note: In this guide we're using a [teardown device](#). This means that the motherboard has been deshielded during the teardown procedure. You can still do all the repairs with this guide but your motherboard will look [like this](#).



TOOLS:

- [iOpener](#) (1)
- [Suction Handle](#) (1)
- [iFixit Opening Picks \(Set of 6\)](#) (1)
- [Isopropyl Alcohol \(90% or Greater\)](#) (1)

optional

- [Microfiber Cleaning Cloths](#) (1)

optional

- [Heat Gun](#) (1)

optional



PARTS:

- [Precut Adhesive Card](#) (1)

optional

- [iFixit Adhesive Remover \(for Battery, Screen, and Glass Adhesive\)](#) (1)

optional

Step 1 — Heat the rear glass



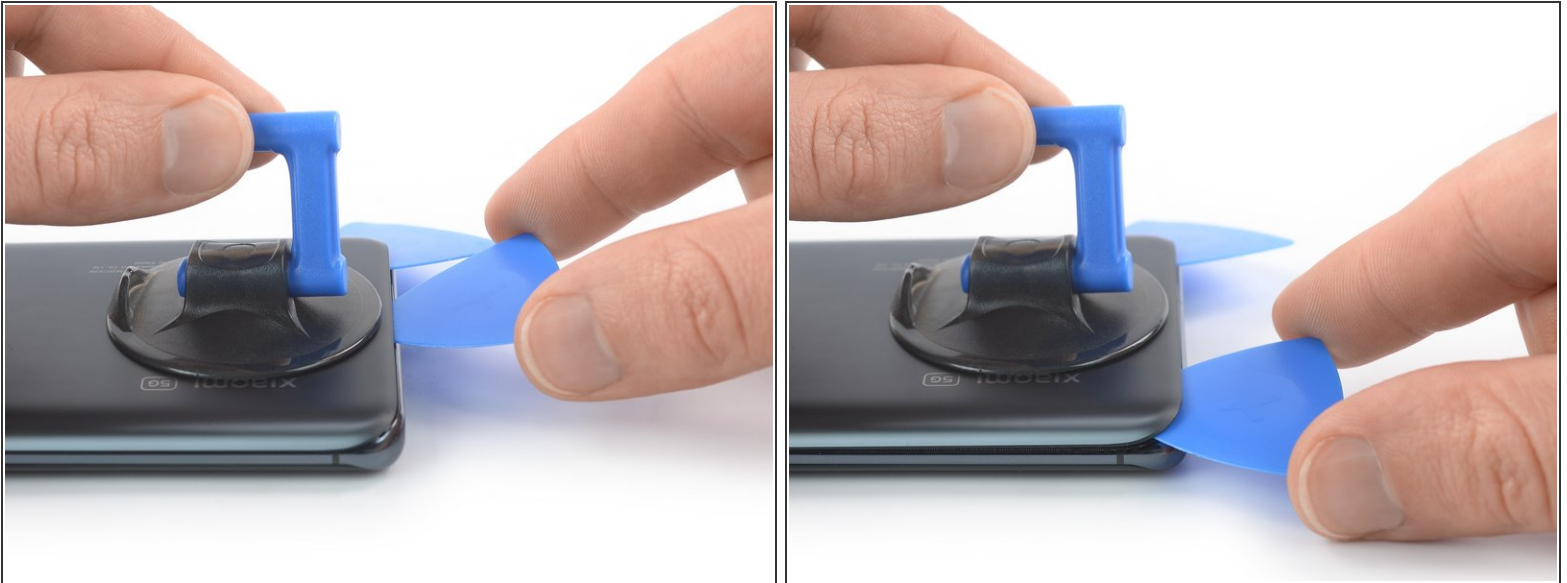
- [Prepare an iOpener](#) and apply it to the rear glass for at least two minutes to loosen the adhesive underneath.
- ⓘ A hair dryer, heat gun, or hot plate may also be used, but be careful not to overheat the phone—the display and internal battery are both susceptible to heat damage.

Step 2 — Insert an opening pick



- Secure a suction handle to the bottom edge of the rear glass, as close to the edge as possible.
 - ❗ If the rear glass is cracked, the suction handle may not stick. Try [lifting it with strong tape](#), or superglue the suction handle in place and allow it to cure so you can proceed.
- Lift the back cover with the suction handle to create a small gap between the back cover and the frame.
 - ❗ In case you have trouble creating a gap, apply more heat to further soften the adhesive. Follow the [iOpener](#) instructions to avoid overheating.
- Insert an opening pick into the gap you created.
- Slide the opening pick to the bottom right corner to slice the adhesive.
- Leave the opening pick in place to prevent the adhesive from resealing.


Step 3 — Slice the adhesive



- Insert a second opening pick at the bottom edge of your phone.
- Slide the opening pick to the bottom left corner to slice the adhesive.
- Leave the opening pick in place to prevent the adhesive from resealing.

Step 4 — Slice the adhesive



 If the adhesive becomes hard to cut, it has most likely cooled down. [Use your iOpener](#) to reheat it.

- Insert a third opening pick at the bottom left corner of your phone.
- Slide the opening pick along the left edge of your Xiaomi Mi 11 to slice the adhesive.
- Leave the opening pick in the top left corner to prevent the adhesive from resealing.

Step 5



- Insert a fourth opening pick underneath the top left corner of your phone.
- Slide the opening pick along the top edge to slice the adhesive.
- Leave the opening pick in the top right corner to prevent the adhesive from resealing.

Step 6



- Insert a fifth opening pick underneath the top right corner.
- Slide the opening pick along the right edge of the rear glass to slice the remaining adhesive.

Step 7 — Remove the rear glass



- Remove the rear glass.
- ✦ Apply new adhesive where necessary after cleaning the relevant areas with isopropyl alcohol (>90%).
- ✦ [Secure the new rear glass with pre-cut adhesive](#) or double-sided adhesive tape. After installing the rear glass, apply strong, steady pressure to your phone for several minutes to help the adhesive form a good bond—a stack of heavy books works well.

Compare your new replacement part to the original part. You may need to transfer remaining components or remove adhesive backings from the new part before you install it.

To reassemble your device, follow these instructions in reverse order.

Take your e-waste to an [R2 or e-Stewards certified recycler](#).

Repair didn't go as planned? Try some [basic troubleshooting](#), or ask our [Answers community](#) for help.