



Magic Mouse 2 Battery Replacement

Warning: Battery replacement can be dangerous!...

Written By: Ben Capehart



INTRODUCTION

Warning: Battery replacement can be dangerous! Exercise extreme caution when following this guide!

Drain the battery below 25% to avoid battery thermal run-away.

TOOLS:

[T5 Torx Screwdriver](#) (1)
[Spudger](#) (2)
[iFixit Opening Tool](#) (1)
[Tweezers](#) (1)
[Jimmy](#) (1)
[iFixit Adhesive Remover](#) (1)
(Optional)
[Heat Gun](#) (1)
(Optional)

PARTS:

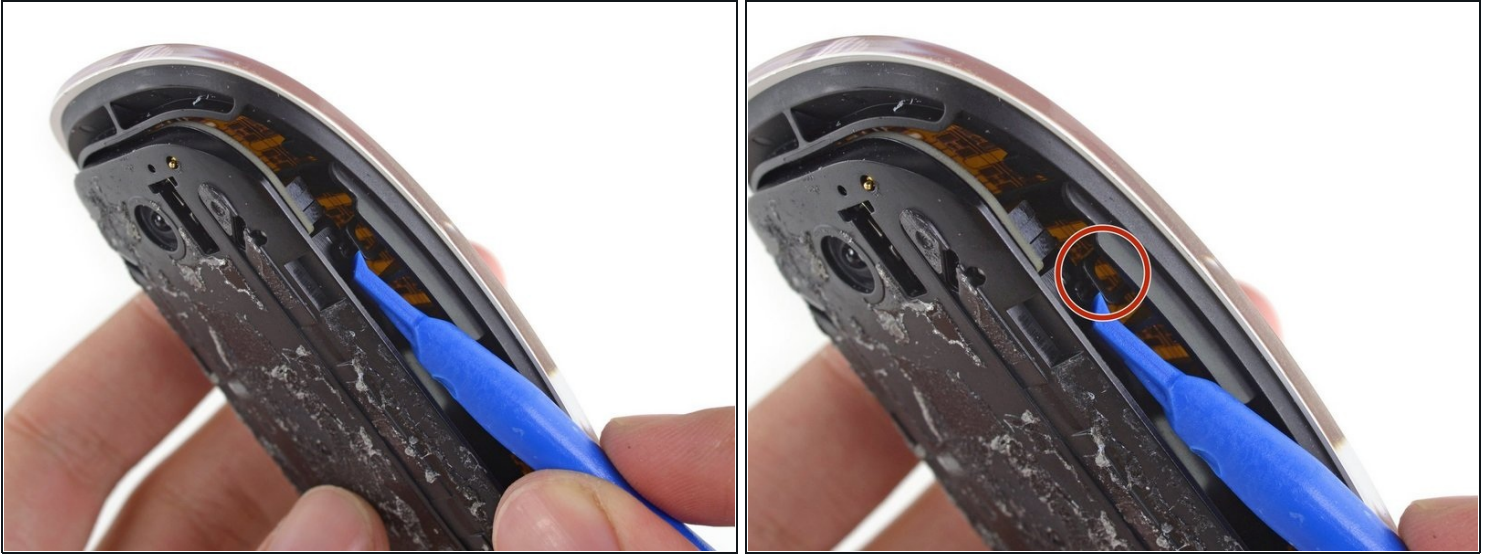
[Apple A1672 Battery \(1ICP10/34/50 Battery Type\)](#) (1)

Step 1 — Pry it open



- Wedge spudgers and picks between the acrylic and the metal/plastic bottom.
- ⓘ Please note: the metal bottom is not needed to be removed.

Step 2 — Separate the two halves



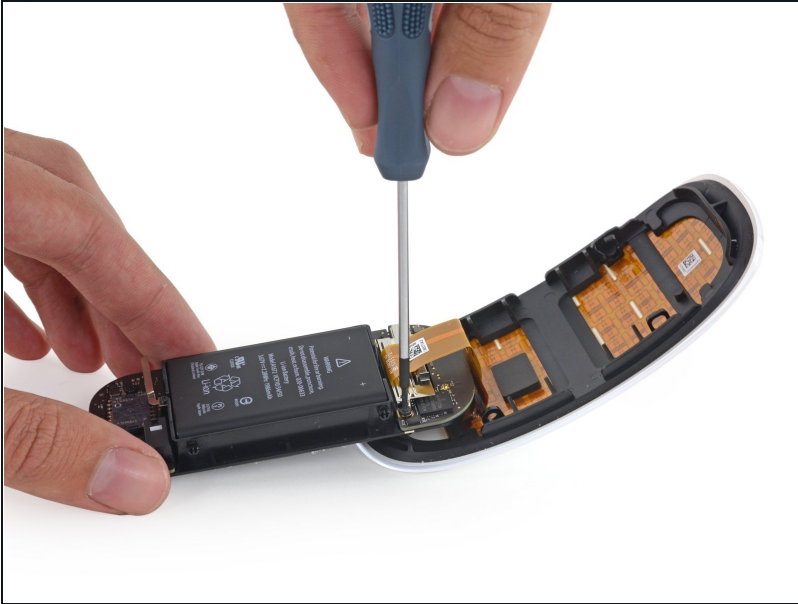
- Use a pry tool or spudger to unlatch four plastic clips around the perimeter of the inner compartment

Step 3 — Remove the Upper Casing



- Open the battery compartment carefully. A ribbon cable connects the two halves.

Step 4 — Disconnect the Ribbon Cable



- Remove the two Torx T5 screws holding the metal cowl over the cable connector.
- Disconnect the cable from the board and set the top half of the mouse aside.

Step 5



ⓘ If you have an iFixit battery kit with liquid adhesive remover, it's time to get it prepped.

⚠ iFixit adhesive remover contains acetone, a mild skin and eye irritant.

- Wear eye protection when handling and applying the adhesive remover. (Eye protection is included in your kit.)

⚠ **Do not** wear contact lenses without eye protection.

- Protective gloves are also included in your kit. If you are concerned about skin irritation, put your gloves on now.

Step 6



- Pull off the black rubber stopper from your bottle of adhesive remover.

⚠ Twist to loosen or remove the bottle cap before you cut the applicator tip.

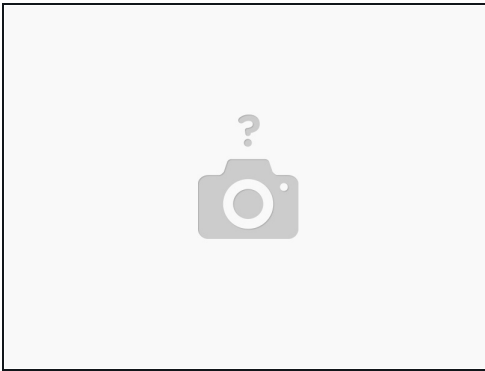
ⓘ This unseals the bottle and allows the pressure to equalize before you cut the applicator tip. If you skip this step, the adhesive remover may spray out unexpectedly when the tip is cut.

- Use scissors to cut off the sealed tip of the applicator.

ⓘ Cutting close to the narrow tip will give you better control so you can apply the adhesive remover in small amounts.

⚠ Twist and close the bottle cap securely before you proceed further.

Step 7



- Apply a 2 drops of adhesive remover evenly.
- ① You don't need to use very much. The small bottle contains more than 4x the amount of solvent needed to remove the battery.
- Wait 2-3 minutes for the liquid adhesive remover to penetrate underneath the battery.

Step 8 — Wedge the battery out



⚠ Exercise extra caution here.
Lithium ion batteries can be
dangerous if punctured or bent.

- ① Just like the rest of the mouse, the battery is held in entirely by glue. Judicious applications of [isopropyl alcohol](#) and Adhesive Remove or more heat from underneath may be necessary to free it.
- Get a spudger under the battery and pry it up off the glue.
- Pull the charging port out of place.

To reassemble your device, follow these instructions in reverse order.

Take your e-waste to an [R2 or e-Stewards certified recycler](#).