



LG G8 ThinQ Battery Replacement

If your LG G8 ThinQ is having trouble holding a...

Written By: Lauren Maynor



INTRODUCTION

If your LG G8 ThinQ is having trouble holding a charge or staying turned on, use this guide to replace the battery. The battery is the main source of life for the device, and therefore can cause several issues if damaged. Refer to the [troubleshooting page](#) to decide if this is the repair you need.

Before disassembling your device, discharge the battery below 25%.

Swollen batteries can be very dangerous, so wear eye protection and exercise caution.

This phone uses a strong adhesive on the battery and back panel; iFixit's adhesive remover or high concentration (90% or higher) of isopropyl alcohol can be used to make the process easier.

Adhesive can be replaced to closer replicate factory fit and finish.



TOOLS:

[Phillips #000 Screwdriver](#) (1)
[SIM Card Eject Tool](#) (1)
[iFixit Opening Tool](#) (1)
[iFixit Opening Picks \(Set of 6\)](#) (1)
[Heat gun or heat pad](#) (1)
[Plastic Cards](#) (1)



PARTS:

[LG G8 ThinQ Battery](#) (1)

Step 1 — SIM Card Tray



- Unplug and power off your phone before you begin.
- Insert the SIM card eject tool into the pinhole in the lower right side of the phone.
- Remove the SIM card and tray.

Step 2 — Back Panel



- Place the phone so that the screen is facing down.
- Insert opening cards between the back panel and frame of the phone to loosen the clips and adhesive.
- Using equal pressure, carefully pry the back panel away from the phone.
- Once enough space has been created, use an opening tool to completely separate the back panel from the phone.

Step 3 — Midframe



- Remove all 14 screws from the midframe using a Phillips #000 screwdriver.
- Work an opening tool around the perimeter of the midframe to pry and remove it from the phone.

Step 4 — Speaker System



- Using an opening tool, carefully pry out and remove the speaker system from the phone.

Step 5 — Battery



- Flip phone so that screen is facing up.
- Using a heating pad, hairdryer, or heat gun, apply heat to loosen the adhesive beneath the battery.

⚠ Be careful to not overheat the phone; the screen and battery are susceptible to damage.

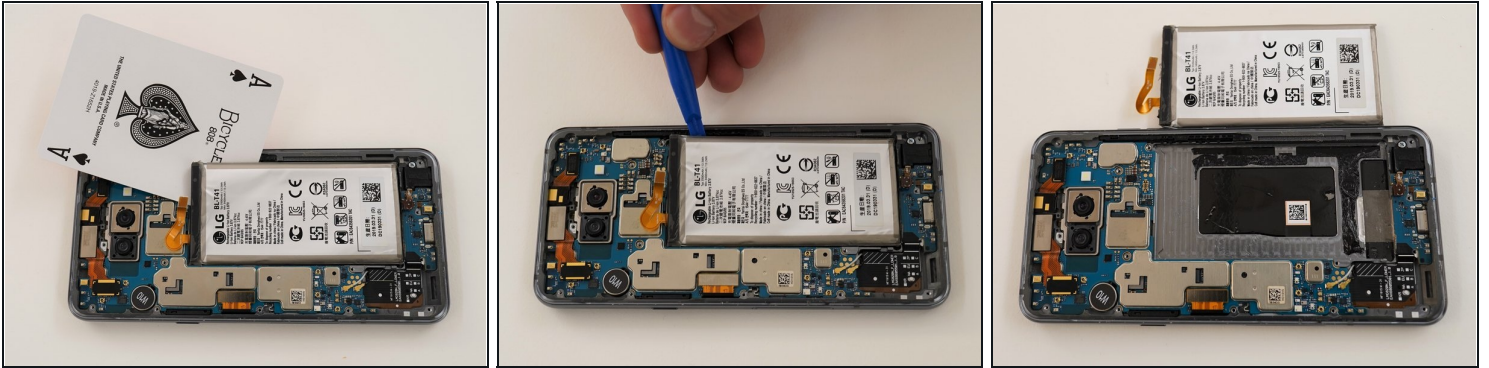
ⓘ The adhesive can be difficult to soften; it may take many attempts.

Step 6



- Using an opening tool, carefully pry up the ribbon cable to disconnect the battery.

Step 7



- Using opening cards or an opening tool, carefully pry around the edges of the battery.
- ① If you have trouble prying up the battery, the adhesive may not be loose enough. Re-apply heat, or use some isopropyl alcohol under the battery, allowing it to penetrate for several minutes to weaken the adhesive.
- Remove the battery from the phone.

To reassemble your device, follow these instructions in reverse order.