



Archived

Samsung RF265BEAESR Water Filter Replacement

These are instructions to replace the water...

Written By: Heriberto Miranda



INTRODUCTION

These are instructions to replace the water filter in your smart fridge. Replacing the water filter as soon as possible ensures that you will have clean and pure water. This fridge will let you know on the big touchscreen that your filter needs to be replaced.

PARTS:

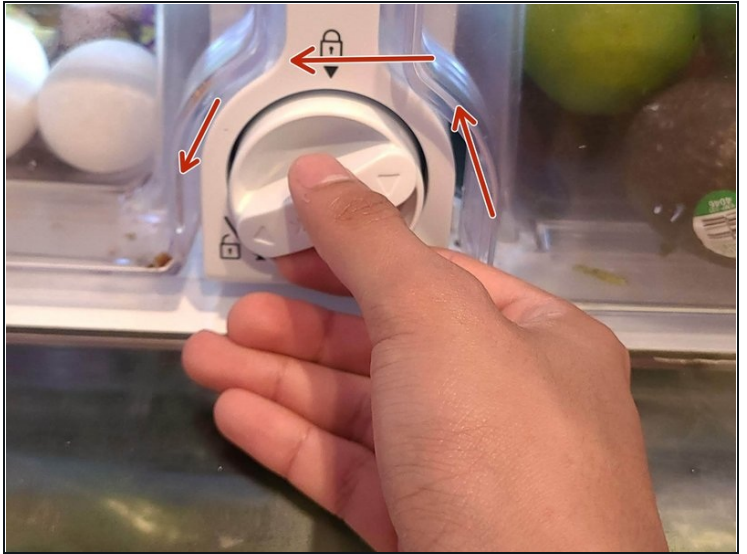
[Samsung Water Filter DA29-00020B](#) (1)

Step 1 — Water Filter



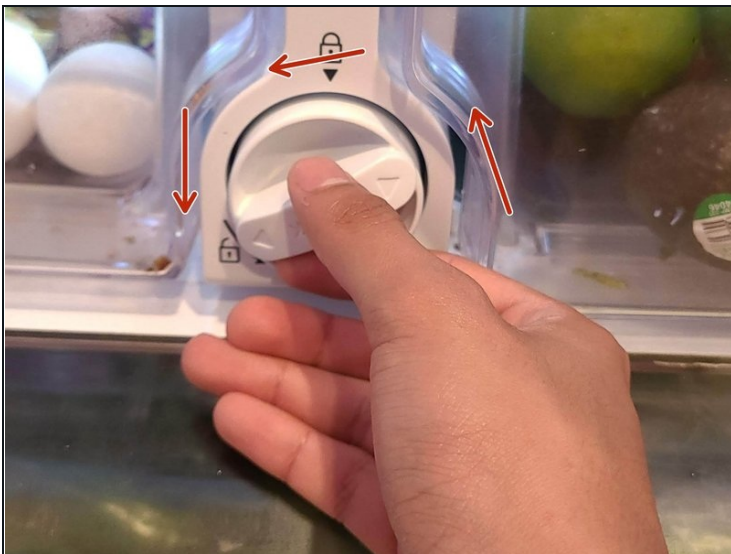
- Open the refrigerator door to expose the water filter compartment in the center of the refrigerator (right above the bottom drawer).

Step 2



- Rotate the knob of the filter counter-clockwise until the arrow lines up with the unlocked symbol.

Step 3



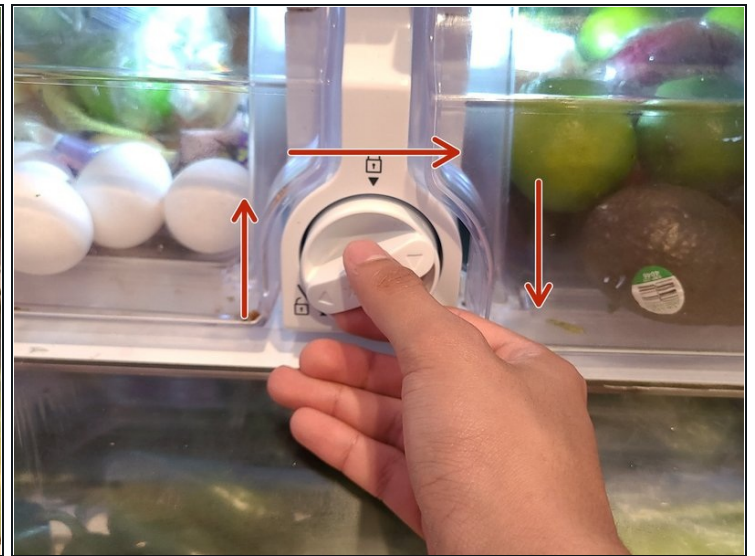
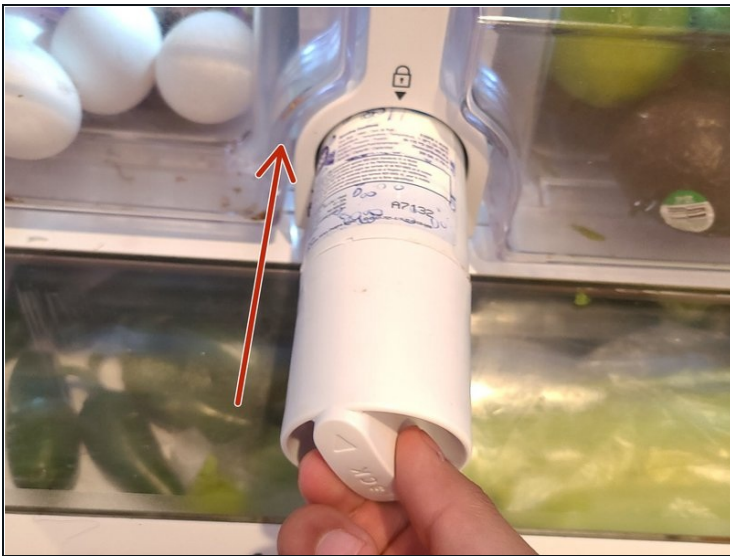
- Once the filter is unlocked and can be moved freely, gently pull the filter towards you to remove it.

Step 4



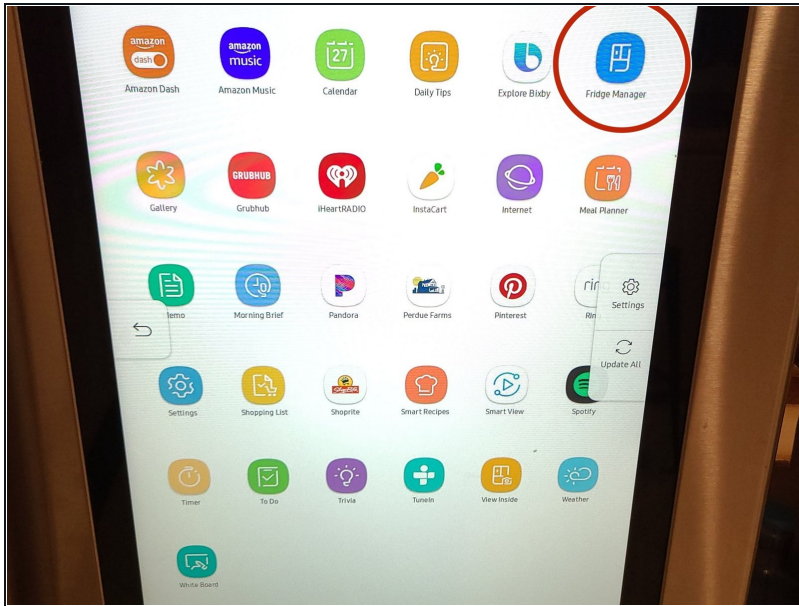
- Turn off the water supply to the refrigerator.
- Drain all of the remaining water from the refrigerator using a large bowl or container. (Drain a minimum of 4 gallons)

Step 5



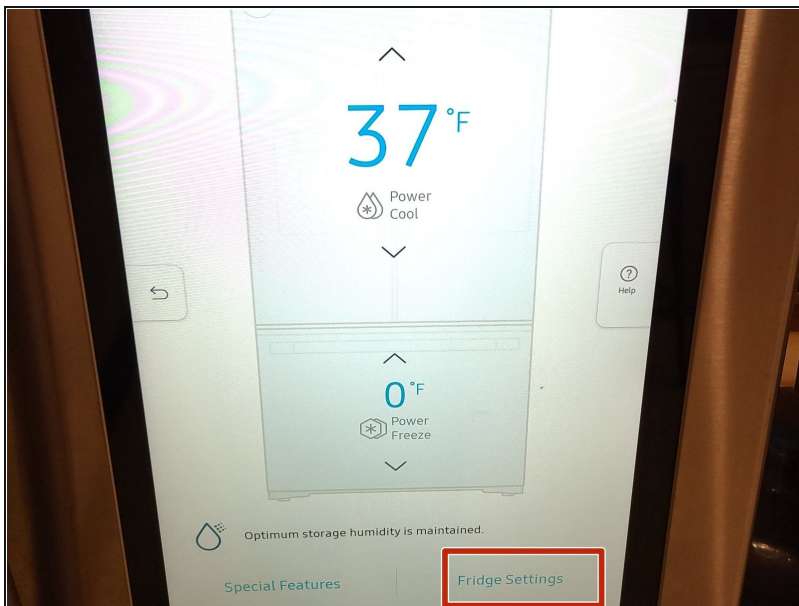
- Insert the new filter and rotate it clockwise until it locks in place.

Step 6



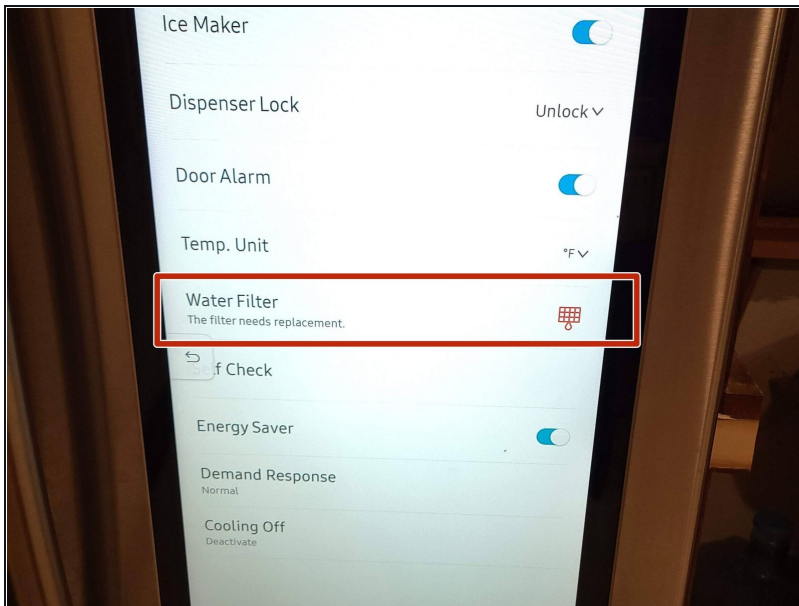
- Go to the "App Drawer" on the refrigerator screen.
- Locate and select the "Fridge Manager" icon.

Step 7



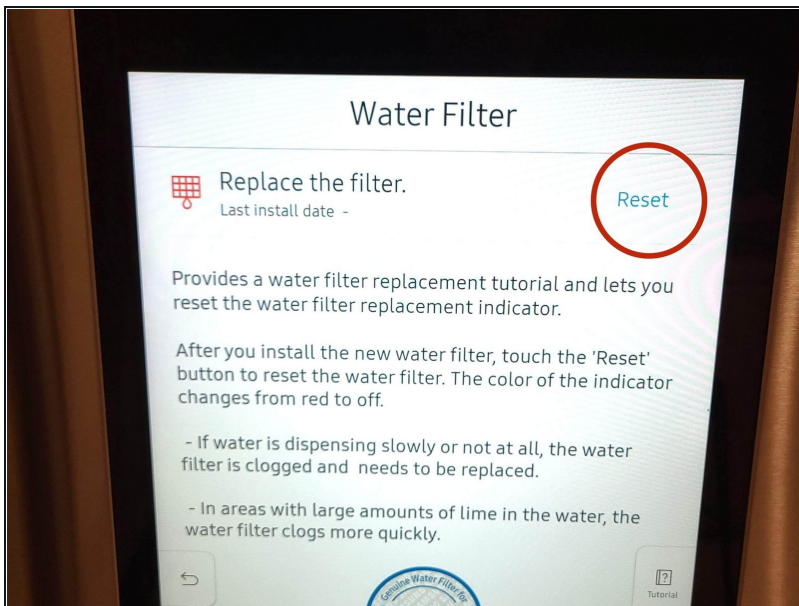
- Select "Fridge Settings" located at the bottom right corner of the screen.

Step 8



- Select "Water Filter Replacement".

Step 9



- Select "Reset" to reset the water filter.
- Turn the water supply to the refrigerator back on.
- Continue normal use of the water dispenser.

To reassemble your device, follow these instructions in reverse order.