



# Toshiba Satellite C855D-S5109 Keyboard Replacement

A quick guide on how to replace the keyboard on a Toshiba Satellite C855D-S5109.

Written By: Brook Ostrander



## INTRODUCTION

This is a replacement guide for the keyboard on the Toshiba Satellite C855D-S5109. Replacing the keyboard might be a good option if it is worn and over-used or even if it is too sticky to fully clean. Sonetimes the letters on keyboard keys rub off with time, so it might be a good idea to replace the keyboard when this happens. The guide takes you through the steps to remove and replace the keyboard, such as; removing the battery, carefully prying the keyboard up, and disconnecting the keyboard ribbon cable. When replacing the keyboard it is imperative to exercise caution and practice patience. Be sure the laptop is disconnected from any power source and the battery is removed before attempting to replace the keyboard.



### TOOLS:

- [Jimmy](#) (1)



### PARTS:

- [Toshiba Satellite A105-S4074 Keyboard](#) (1)

## Step 1 — Battery



- Flip the laptop over so the bottom is facing up.

## Step 2



- Slide the two lock tabs on the battery to the open position.



## Step 3



- While still holding the lock tabs outward, use your hand to grab the top of battery and pull up.
- Remove the battery.

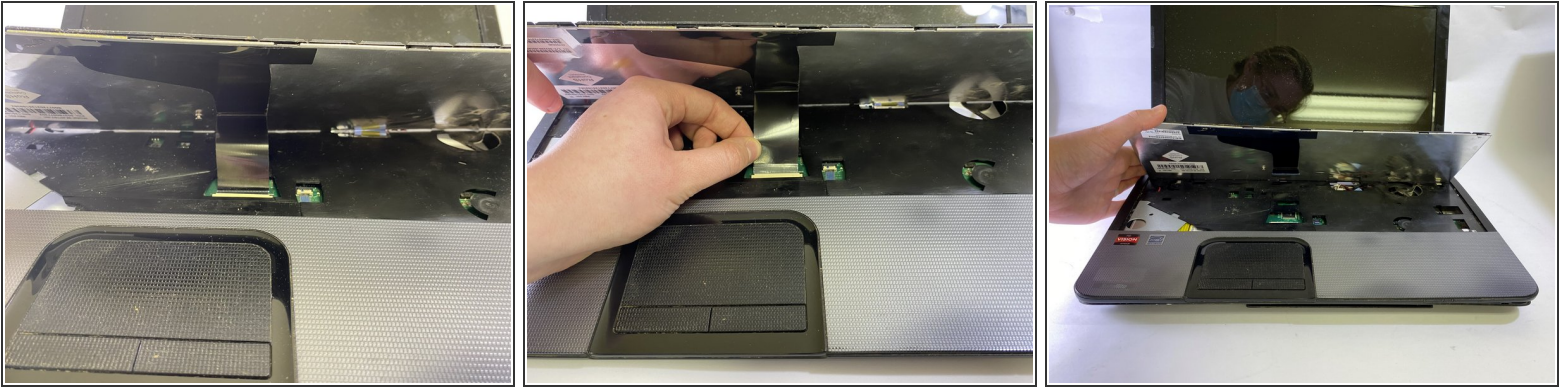
## Step 4 — Keyboard



- Using a Jimmy, slowly lift the keyboard up and away from the palm-rest. Slowly work around the edges, pushing the clips back, prying the keyboard up with minimal force.
- ⓘ Be sure to place the tool under the keyboard not the keys themselves!

⚠ Patience is key on this step; it might take a while, but don't force anything or you'll risk breaking a clip.

## Step 5



- Flip up the locking flap of the ZIF connector holding the keyboard cable on the motherboard.
- Pull the keyboard ribbon cable out from the connector on the motherboard.
  - ❗ The ribbon should detach from the palm-rest not the underside of the keyboard.
- Remove the keyboard from the laptop.
- ✦ While replacing the keyboard, you will not need the Jimmy. Just gently press down around the edges of the new keyboard after plugging the ribbon cable in. You will hear it click back into place as the clips engage.

To reassemble your device, follow these instructions in reverse order.