



Huffy Kids Tricycle Seat Replacement

Huffy Kids Tricycle Seat being replaced. A broken or damaged seat caused by either falling hard on the ground or being crushed accidentally

Written By: Babatunde Adewunmi



INTRODUCTION

This guide is used for the replacement of a Huffy Kids Tricycle seat. A broken or damaged seat caused by either falling hard on the ground or being crushed accidentally, these guides would make replacement easy and faster. You would be needing just two tools to complete this guide.

Additional Information

- SKN(Stock Keeping Number): **62960**
- ID: **34634A3E**
- UPC (Universal Product Code): **2891429161**
- Brand: **Huffy Bicycle Company**
- Manufacturing Number: **29161C**
- Item Height: **9 inches**
- Item Length: **3 inches**
- Item Weight: **0.15 lbs**
- Item Width: **3 inches**



TOOLS:

- [Spanner 3.0 Screwdriver](#) (1)

Ring

<https://www.amazon.com/Piece-Double-Ended-Ring-Spanner/dp/B000UYTPPM>

- [Phillips #2 Screwdriver](#) (1)



PARTS:

- [tricycle seat](#) (1)

Seat

<https://www.huffybikes.com/parts/>

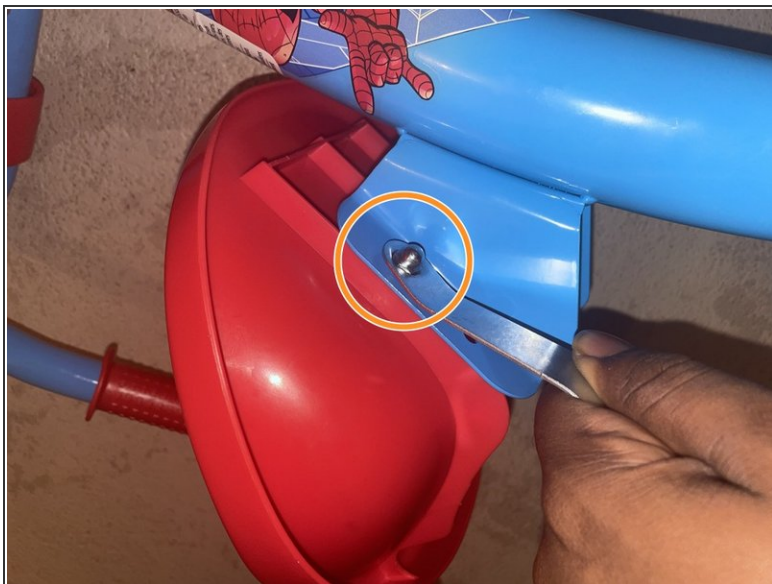
- [EDCO Screw, Cap 7/16-20 X 1-1/4 Zinc 10003](#) (2)

Step 1 — Seat



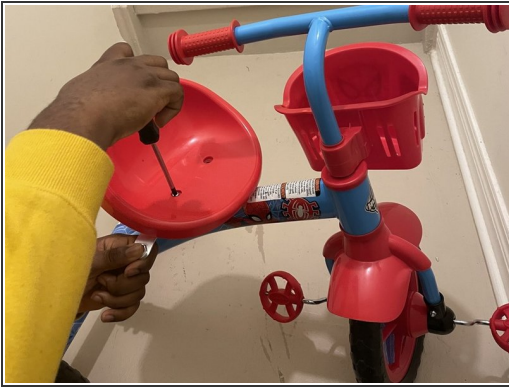
- Focus on the seat area for the replacement.

Step 2



- Place the spanner on the bolt on the underside of the seat.
- Then use a Phillips #2 screwdriver to remove the screw on the top of the seat.

Step 3



- Repeat for the other screw.

Step 4



- Lift the seat off of the trike frame.

Step 5



- Place the new seat on the seat bracket, lining up the screw holes in the seat with the appropriate holes on the bracket.
- ⓘ Note that the bracket has two sets of holes for mounting the seat, so choose the appropriate set for the height of the rider. A taller rider will use the further set while a shorter rider will use the set closer to the handlebars.
- Insert the screws from the top of the seat, using your spanner to hold the nuts under the screws.

Step 6



- Give the seat a wiggle to check that it is tight against the bracket.
- If there is any play, tighten the screws a few more turns.

To reassemble your device, follow these instructions in reverse order and you should be able to accomplish this