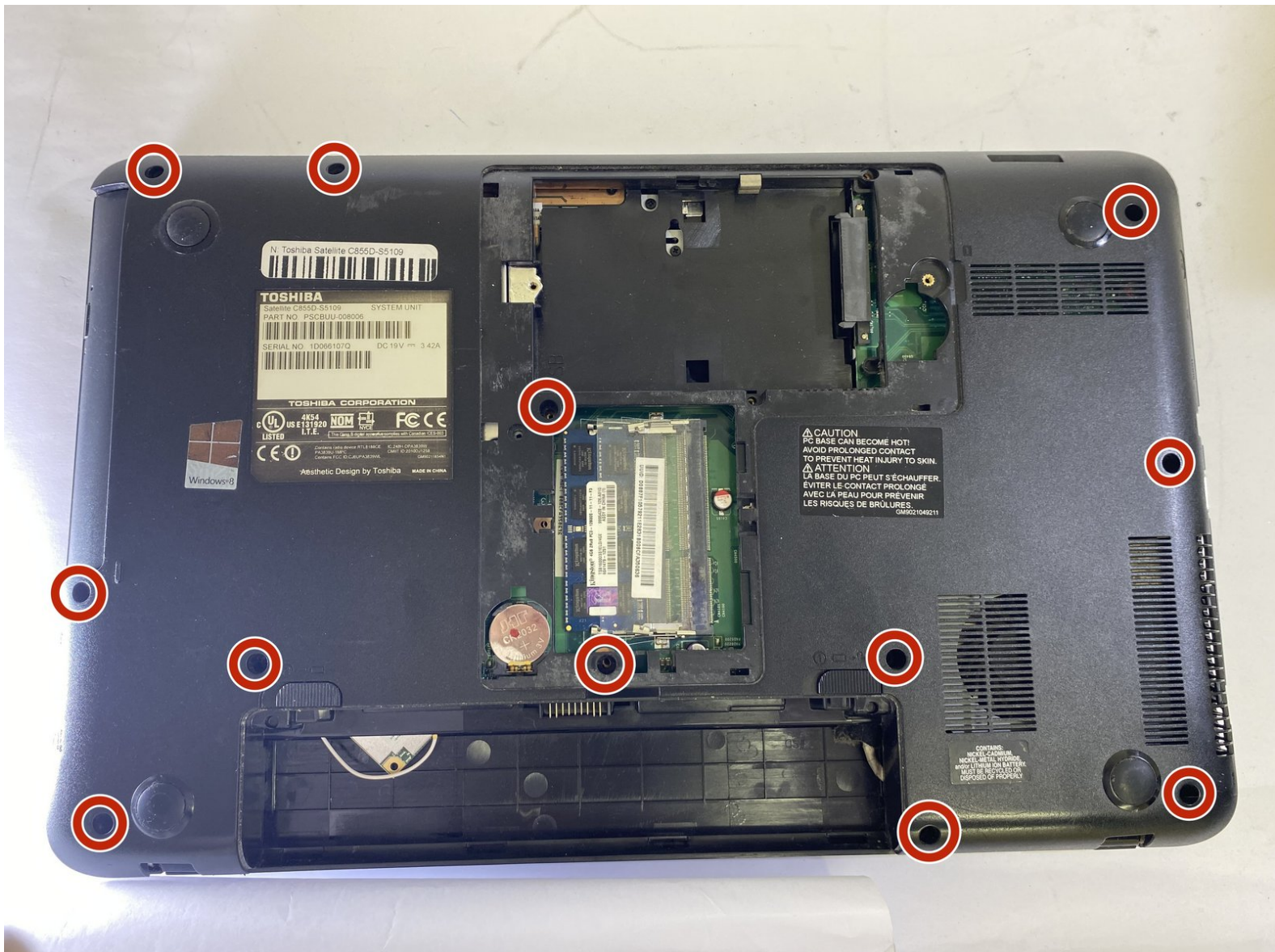




Toshiba Satellite C855D-S5109 Cooling Fan Replacement

This guide will give instructions on the replacement of the cooling fan on this laptop.

Written By: Brook Ostrander



INTRODUCTION

This is a basic guide on how to remove and replace a cooling fan in a Toshiba Satellite C855D-S5109. The cooling fan is responsible for keeping the motherboard and CPU cool during operation. Cooling fans can either become excessively dirty with dust buildup, which will cause noisy or inefficient operation, or can cease function completely, which can cause slower performance or for your device to overheat. This guide will show you how to access the Toshiba Satellite C855D-S5109's fan for replacement or cleaning.



TOOLS:

- [Phillips #00 Screwdriver](#) (1)
- [iFixit Opening Tool](#) (1)
- [Magnetic Project Mat](#) (1)



PARTS:

- [Laptop Cooling Fan - 13N0-P1A0K11](#) (1)

Step 1 — Battery



- Flip the laptop over so the bottom is facing up.

Step 2



- Slide the two lock tabs on the battery to the open position.

Step 3



- While still holding the lock tabs outward, use your hand to grab the top of battery and pull up.
- Remove the battery.

Step 4 — Hard Drive



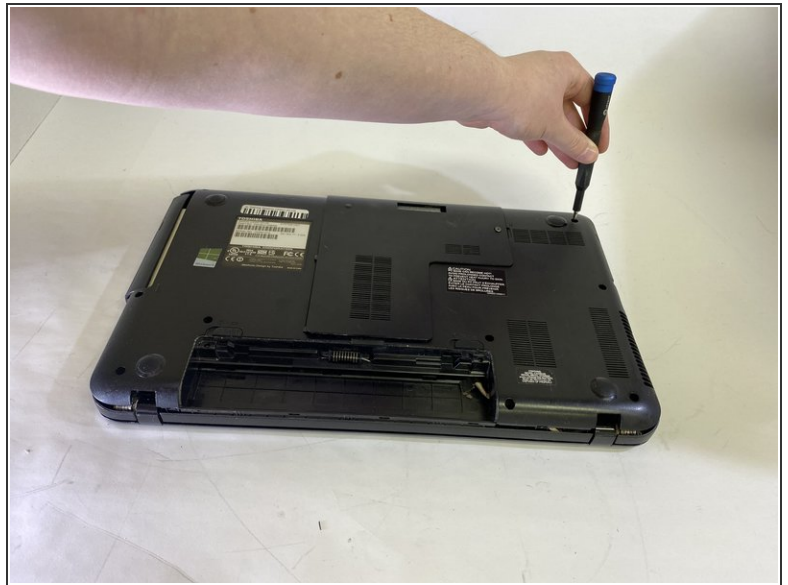
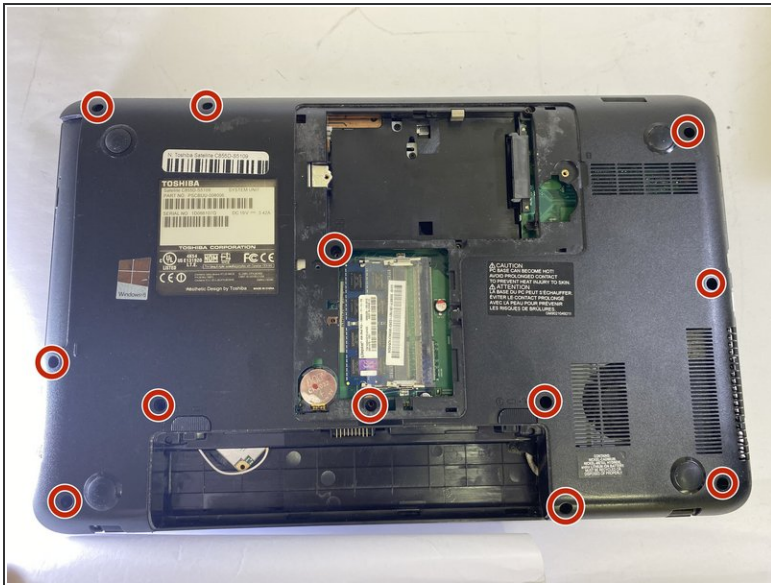
- Use the Phillips #00 screwdriver to unscrew the captive screw on the L-Shaped panel.
- Remove the L-Shaped panel.

Step 5



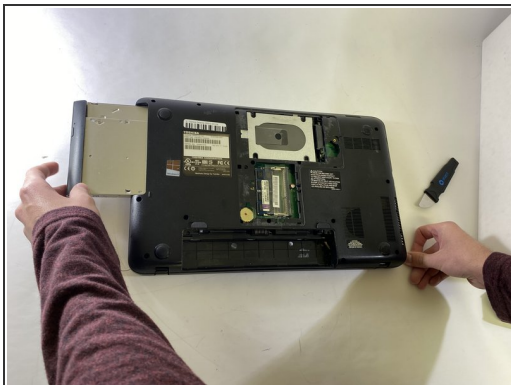
- Using a Phillips #00 screwdriver, remove the screw(s) securing the hard drive to the laptop case.
- Carefully pull the tab on the hard drive to detach the connecting wire to the right of the hard drive.
- Remove the hard drive.

Step 6 — Cooling Fan



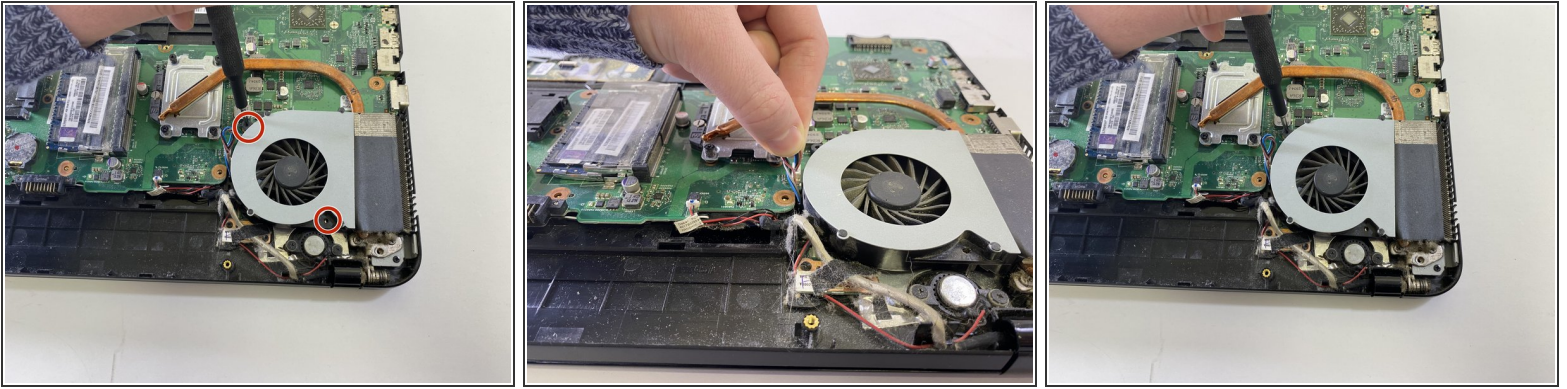
- Remove the twelve 6 mm screws from the back of the laptop with a Phillips #00 screwdriver.
- ⓘ There are 12 screws holding the back panel on the laptop. Two of the screws are located underneath the service panel.


Step 7



- Remove the DVD RW Drive by sliding it out.
- Use a jimmy to pry open the back panel.
- Pull the back panel of the laptop off, exposing the motherboard and other inside components.

Step 8



-  The cooling fan is in the bottom right corner of the laptop.
- Unplug the small red and blue wire connecting the cooling fan to the motherboard.
 - Remove the two 3 mm screws securing the fan to the motherboard with a Phillips #00 screwdriver.
 - Remove the fan from the laptop.

To reassemble your device, follow these instructions in reverse order.