



# Toshiba Satellite C855D-S5109 Motherboard Replacement

This guide will show how get to the motherboard inside of the Toshiba Satellite C855D-S5109 laptop.

Written By: Ernest Armstrong



## INTRODUCTION

Motherboards can get damaged or worn out for a variety of reasons, including physical damage, exposure to water, age, or even bad quality. This guide will show, step by step, how to remove the motherboard from a Toshiba Satellite C855D-S5109 laptop in order to replace it.

Motherboard failure will almost always result in a catastrophic failure of the laptop, so if your laptop completely refuses to turn on and you've already checked the battery, replacing the motherboard may restore functionality to your machine.



### TOOLS:

- [Jimmy](#) (1)
- [Phillips #00 Screwdriver](#) (1)



### PARTS:

- [Toshiba Satellite A105-S4074 Keyboard](#) (1)

## Step 1 — Battery



- Flip the laptop over so the bottom is facing up.

## Step 2



- Slide the two lock tabs on the battery to the open position.



## Step 3



- While still holding the lock tabs outward, use your hand to grab the top of battery and pull up.
- Remove the battery.

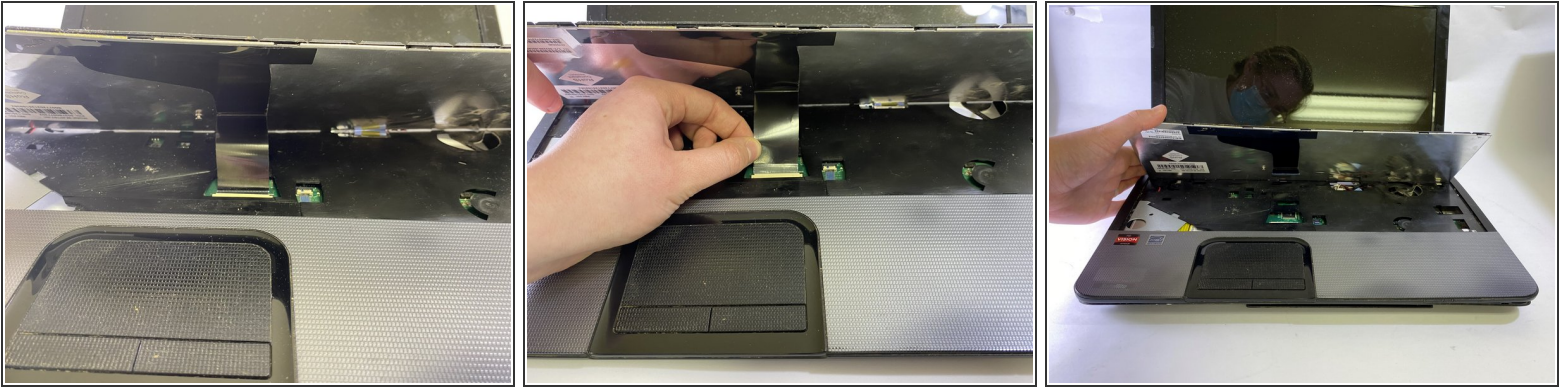
## Step 4 — Keyboard



- Using a Jimmy, slowly lift the keyboard up and away from the palm-rest. Slowly work around the edges, pushing the clips back, prying the keyboard up with minimal force.
- ⓘ Be sure to place the tool under the keyboard not the keys themselves!

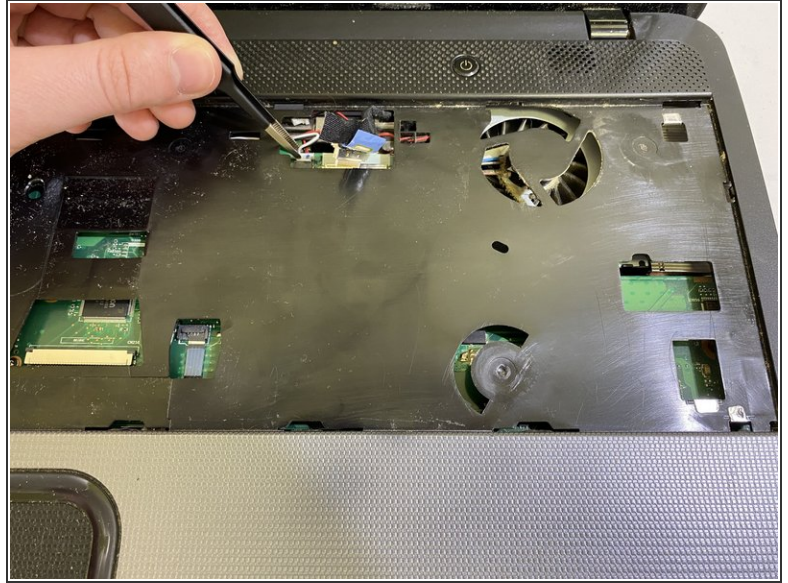
⚠ Patience is key on this step; it might take a while, but don't force anything or you'll risk breaking a clip.

## Step 5



- Flip up the locking flap of the ZIF connector holding the keyboard cable on the motherboard.
  - Pull the keyboard ribbon cable out from the connector on the motherboard.
    - ⓘ The ribbon should detach from the palm-rest not the underside of the keyboard.
  - Remove the keyboard from the laptop.
- ✦ While replacing the keyboard, you will not need the Jimmy. Just gently press down around the edges of the new keyboard after plugging the ribbon cable in. You will hear it click back into place as the clips engage.

## Step 6 — Motherboard



- In the area under the keyboard, disconnect the first cable that is located inside of the square near the front right of the laptop.
- Disconnect the next two cables that are located inside of the square located at the back right of the laptop.



## Step 7



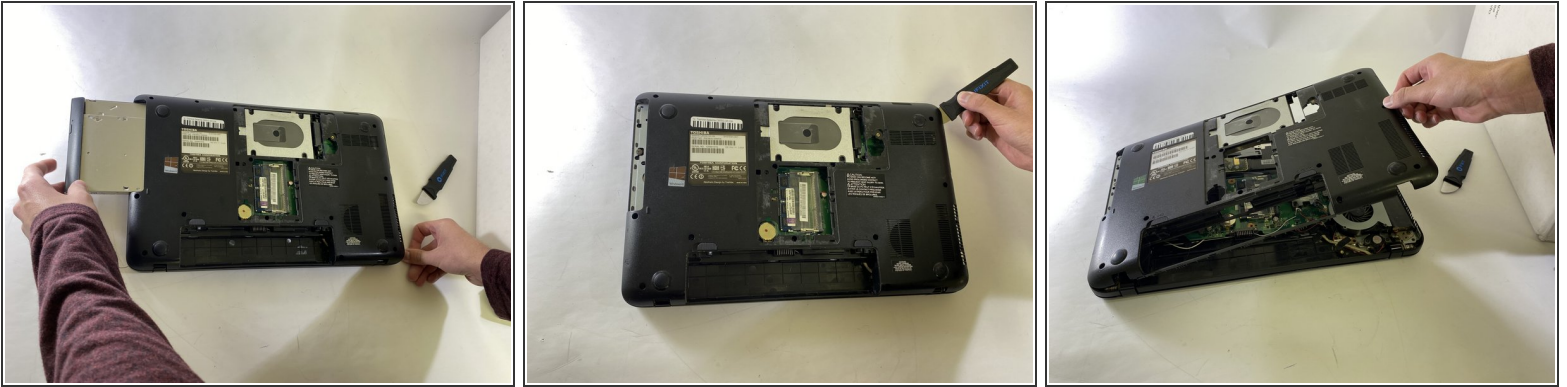
- Flip the laptop over and locate all of the underside screws.
- Remove the ten 6mm Phillips #00 screws around the outside of the bottom panel.
- Remove the two 6mm Phillips #00 screws in the panel that cover the hard drive.
- Remove the panel that covers the hard drive.

## Step 8



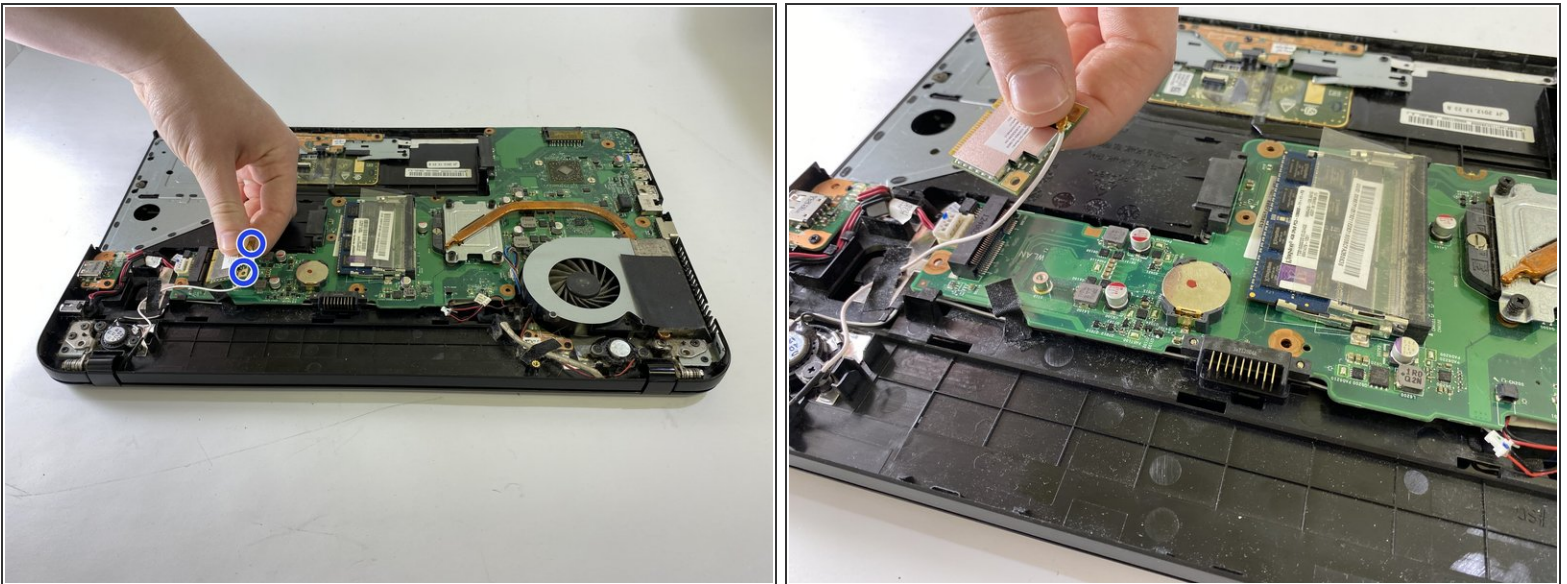
- Remove the four 6mm Phillips #00 screws scattered around the hard drive.

## Step 9



- Remove the DVD RW Drive by sliding it out.
- Pull the back panel of the laptop off, exposing the motherboard and other inside components.

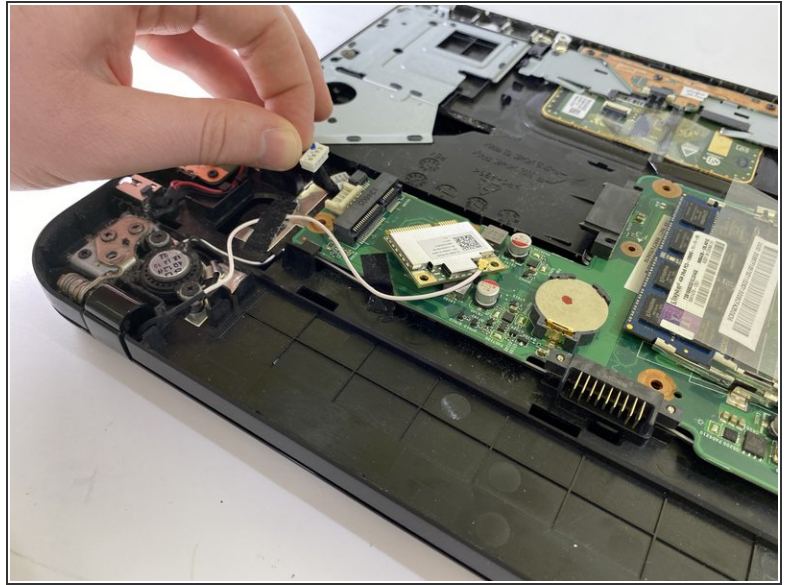
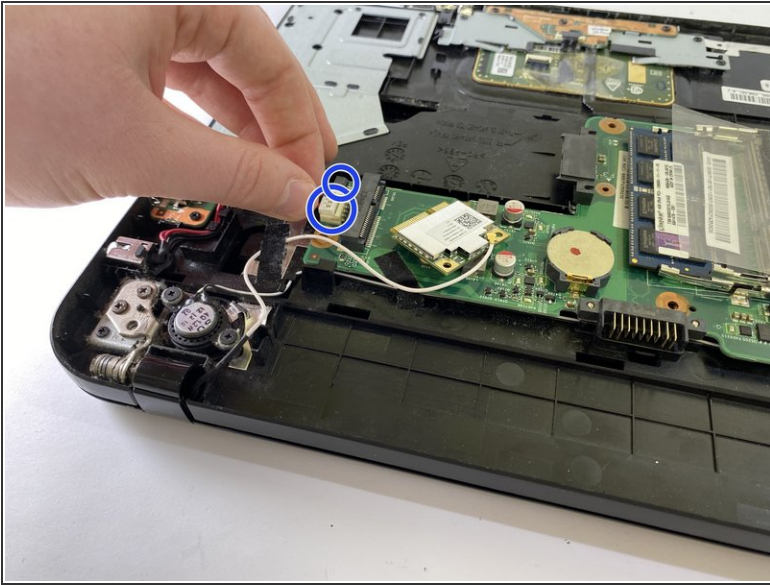
## Step 10



- Remove the two screws holding down the wifi card
- Pull and disconnect the wifi card from the motherboard

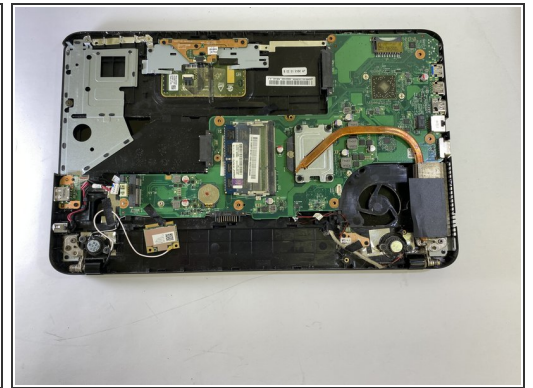
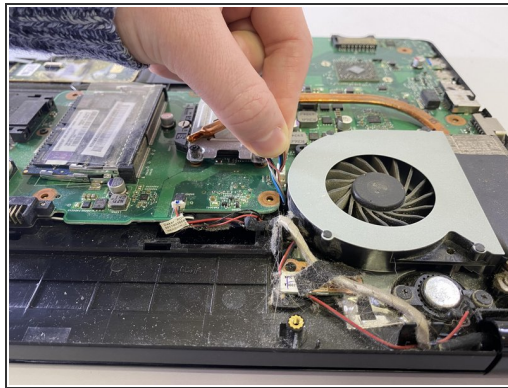


## Step 11



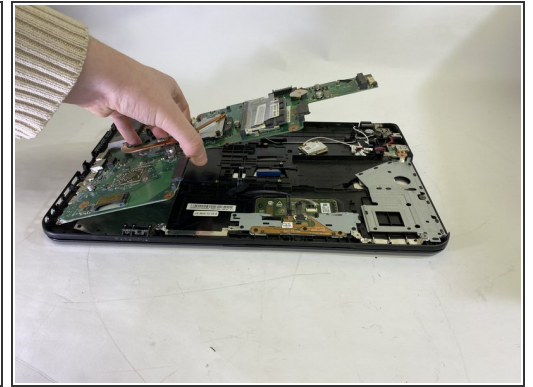
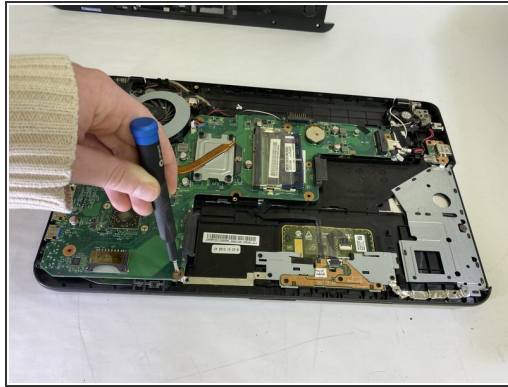
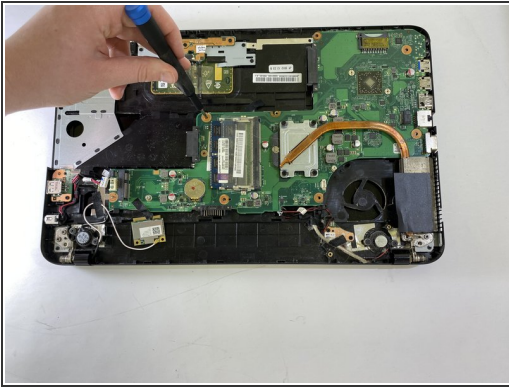
- Disconnect the two cables for the DC power socket jack and the side usb board ribbon.

## Step 12



- Remove the two 3mm Phillips #00 screws that are holding the cooling fan down.
- Unplug the wire that is holding the cooling fan to the motherboard.
- Pull the cooling fan out.

## Step 13



- Remove the nine 6mm Phillips #00 screws around the motherboard that are located inside of the yellow circles.
- Pull the motherboard out of the panel.

To reassemble your device, follow these instructions in reverse order.