



Guitar Hero World Tour Guitar Strummer Replacement

This guide will demonstrate how to clean or...

Written By: Daniel Koelzer



INTRODUCTION

This guide will demonstrate how to clean or replace the strummer (strum bar) for a Guitar Hero: World Tour Controller.

The strummer can often become sluggish or stuck from wear and tear over time. This can often be solved by simply cleaning or lubricating the strum bar, or by replacing it entirely if damaged.

Two AA batteries will need to be removed as shown in the guide.

TOOLS:

[Long Neck Phillips Size 0 Screwdriver](#) (1)

[T10 Torx Security Bit Screwdriver](#) (1)

[iFixit Opening Tool](#) (1)

Step 1 — Strummer



- Remove the battery cover.
- Remove the two AA batteries.

Step 2



- Move the switch from "Locked" to the "Unlocked" position.

- Remove the neck from the body of the guitar.

ⓘ This will likely take two hands.

Step 3



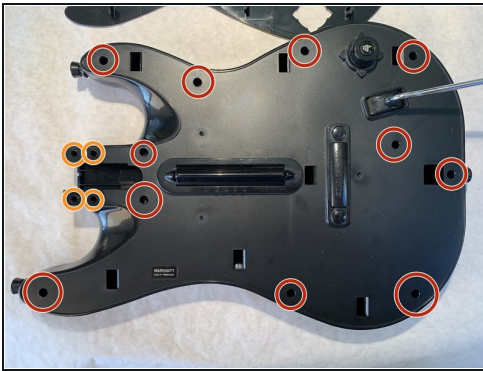
- Ensure the face-plate lock is in the "Unlocked" position.

- Pry the face plate off of the body by gently prying with an opening tool near the marked locations. The face plate should not be difficult to remove.

ⓘ You can pry the face plate away with your fingers, or with any plastic/wooden tool.

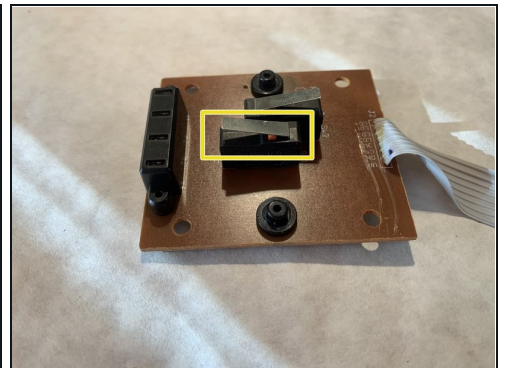
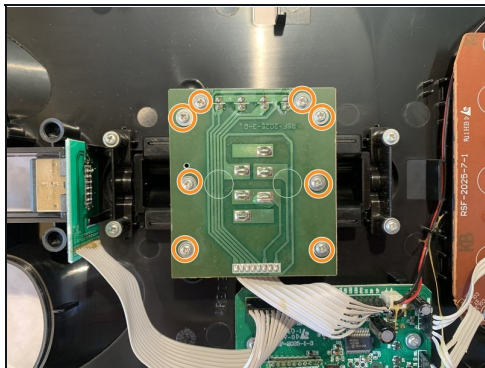
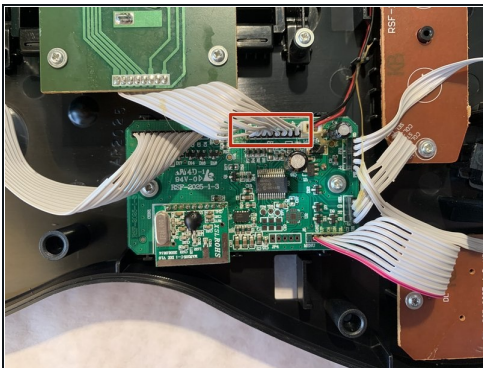
⚠ Avoid using metal tools to pry the plastic face plate away, as it can lead to marring the plastic and ruining the finish.

Step 4



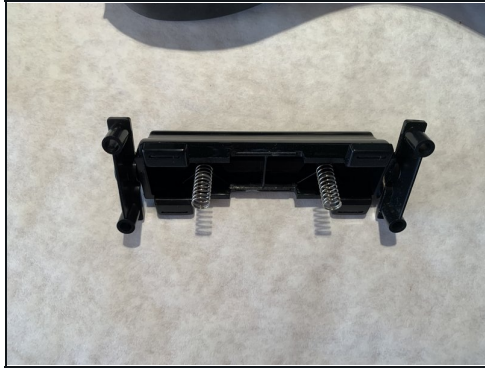
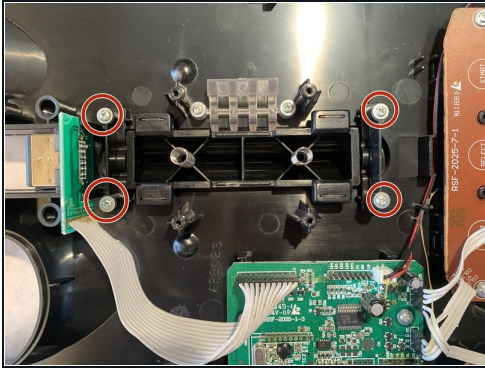
- Remove the eleven Torx T10 screws.
- Remove the four Phillips #0 screws.
- ⓘ There is an additional Torx T10 screw located behind the "Warranty Void" sticker.
- Separate the two halves of the guitar body.

Step 5



- Disconnect the ribbon cable connecting the strummer circuit board to the main control board.
- Remove the eight Phillips #0 screws holding the strummer circuit board to the body.
- Ensure that the switches have a solid clicking action.
- ⓘ Debris can often block the switches from actuating.

Step 6



- Remove four Phillips #0 screws holding the strum bar assembly.
- Remove the strum bar assembly from the body. Ensure that both springs are present and in good condition.
- Check the joint between the strum bar and its mounting brackets. Ensure there are no foreign objects jamming the hole. Ensure the joint is well lubricated.

To reassemble your device, follow these instructions in reverse order.