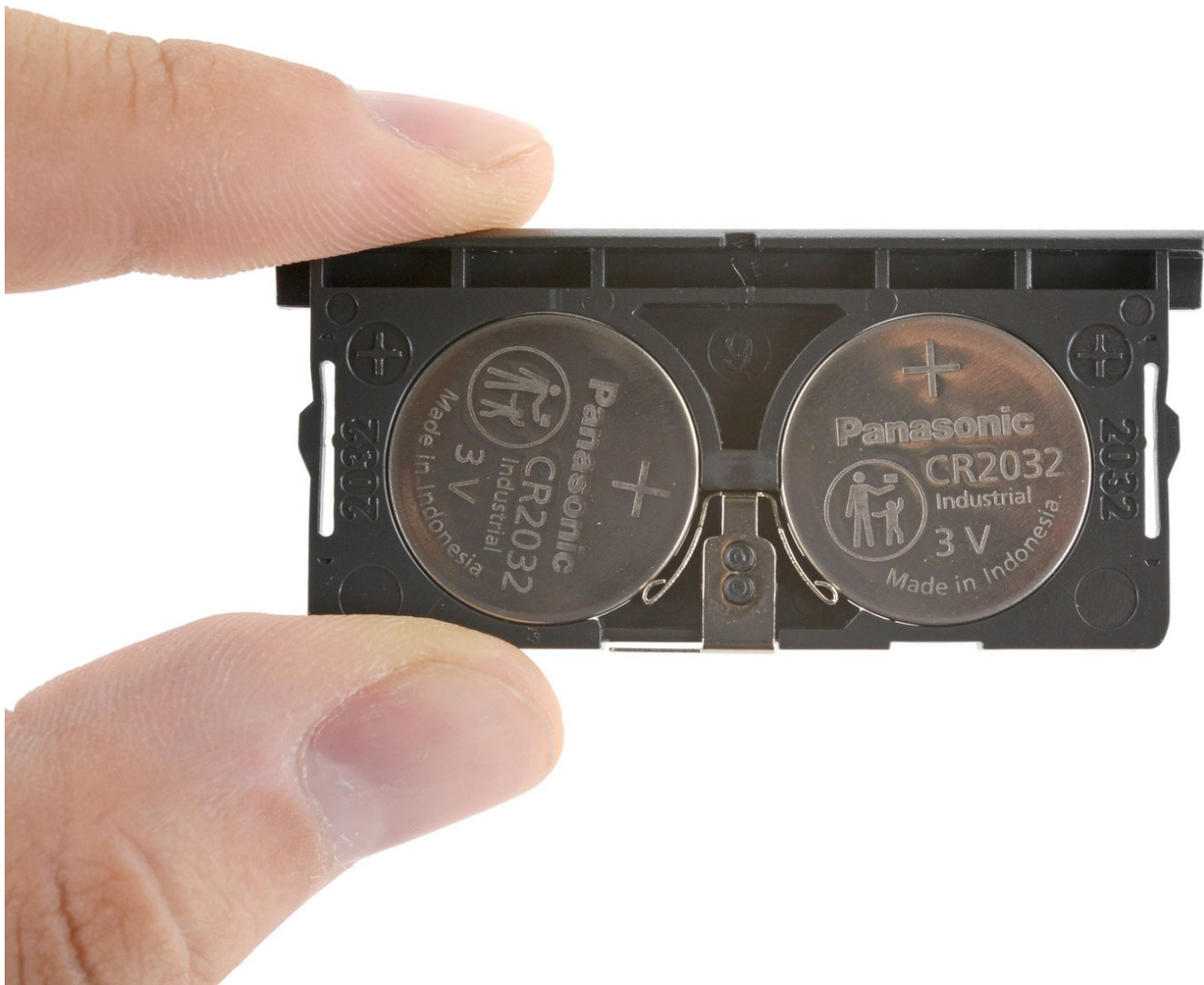




# Logitech Slim Folio Battery Replacement

How to replace a dead or worn out battery in a Logitech Slim Folio iPad keyboard case.

Written By: Carsten Frauenheim



## INTRODUCTION

Use this guide to safely remove and replace the battery in a Logitech Slim Folio iPad keyboard case.

**Note:** The Slim Folio requires two **CR2032** coin cell batteries as replacements.



### TOOLS:

- [Spudger](#) (1)



### PARTS:

- [CR2032 Battery](#) (2)

## Step 1 — Open the case



- Open your case and lay it out flat.

## Step 2 — Pull the iPad away from the case



- Grip the two case corners closest to the keyboard with your thumbs and pull them down, away from the iPad.
- Remove the iPad from the case.

### Step 3 — Locate the battery tray



- Fold the case in half, so the keyboard is facing up.
- Locate the battery tray.

### Step 4 — Open the battery tray



- Insert the pointed end of a spudger into the access hole on the battery tray.
  - Push the spudger in, down, and pull the spudger towards you.
- i** The battery tray should "click" open.



## Step 5 — Remove the battery tray



- Insert the flat edge of the spudger into the top of the battery tray.
- Push the battery tray out, away from the case, until you can grip it with your fingers.

## Step 6



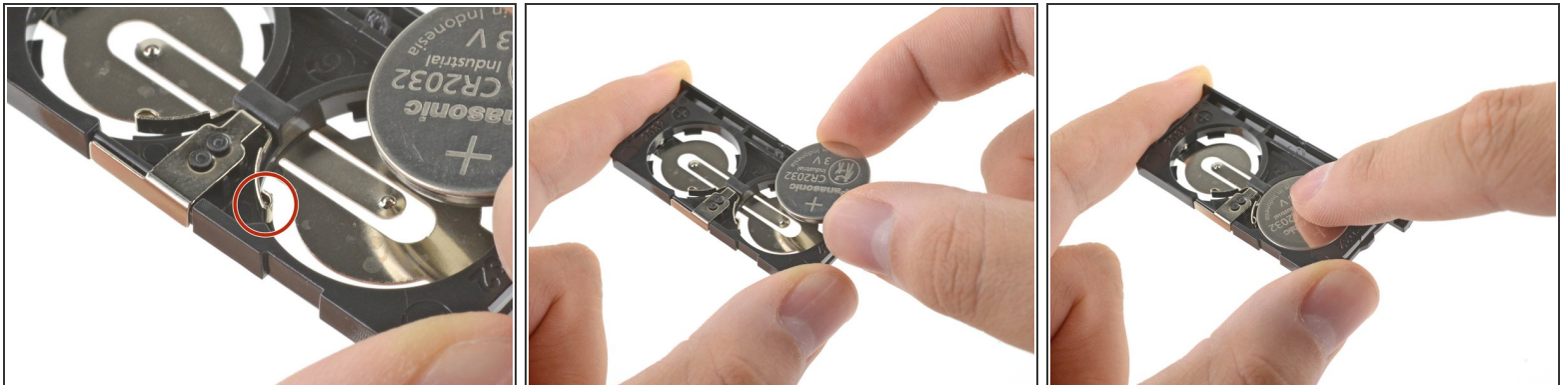
- Remove the battery tray.

## Step 7 — Remove the batteries



- Flip the battery tray over.
- Use the pointed end of the spudger to push both batteries out of the tray.
- Remove the batteries.

## Step 8 — Reinstallation tip



To install new batteries:

- Press one edge of a CR2032 coin cell battery against the contact arm, its text and "+" sign facing up.
- Press to fully seat the battery.
- Repeat for the second battery.

**To reassemble your device, follow the above steps in reverse order.**

Take your e-waste to an [R2 or e-Stewards certified recycler](#).

Repair didn't go as planned? Check out our [Answers community](#) for troubleshooting help.