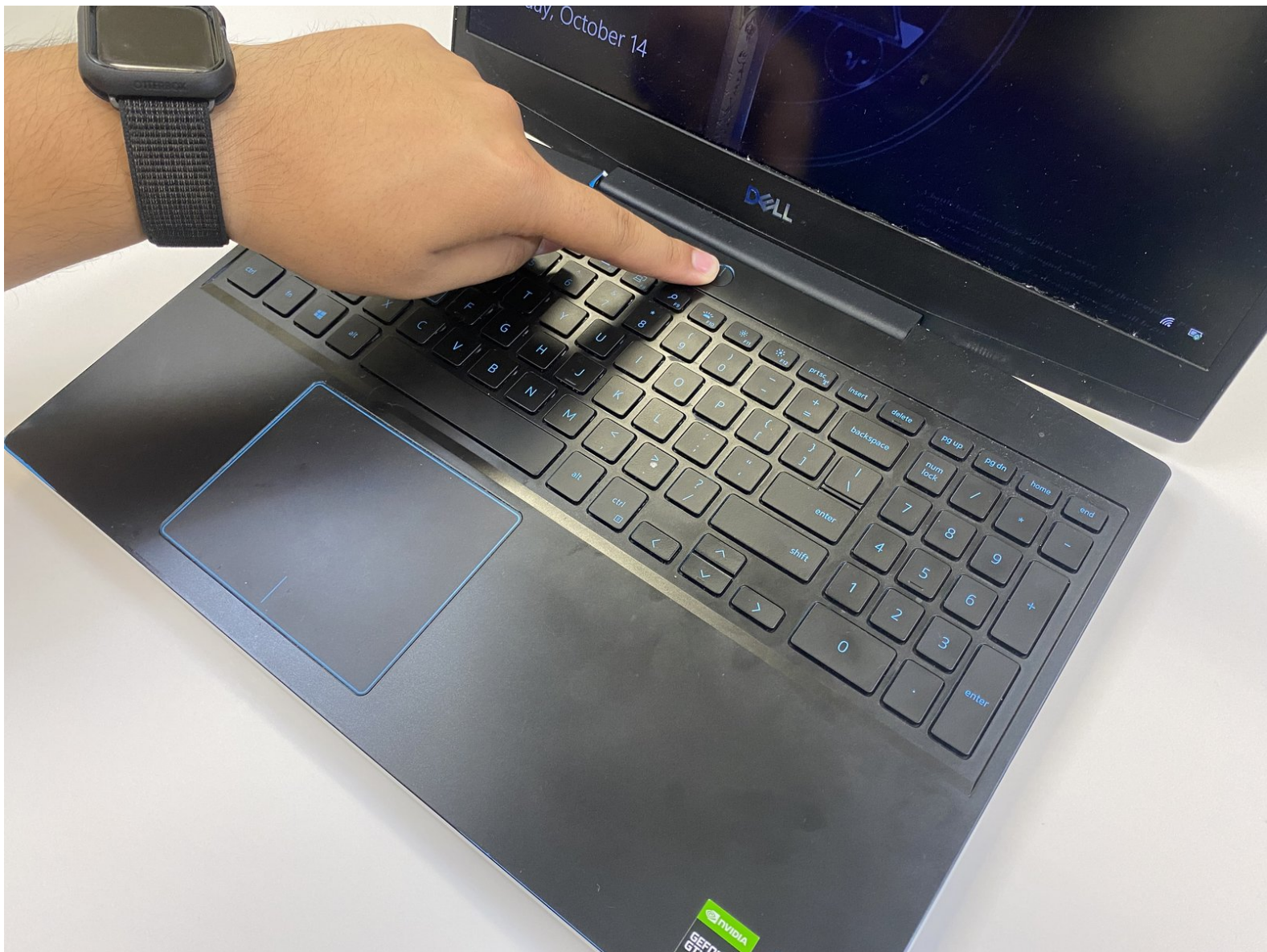




Dell G3 3590 (2019) Hard Drive Replacement

The potential for the hard drive to fail can...

Written By: Bryan Tang



INTRODUCTION

The potential for the hard drive to fail can happen with any computer. With laptops, this is especially the case due to their portable nature and limited protection. Replacing the hard drive is a useful skill in extending the lifespan of your laptop as well as maintaining storage space. In this guide, we will demonstrate how to replace the hard drive in a Dell G3 3590 (2019). No specialized skills are required for this replacement.



TOOLS:

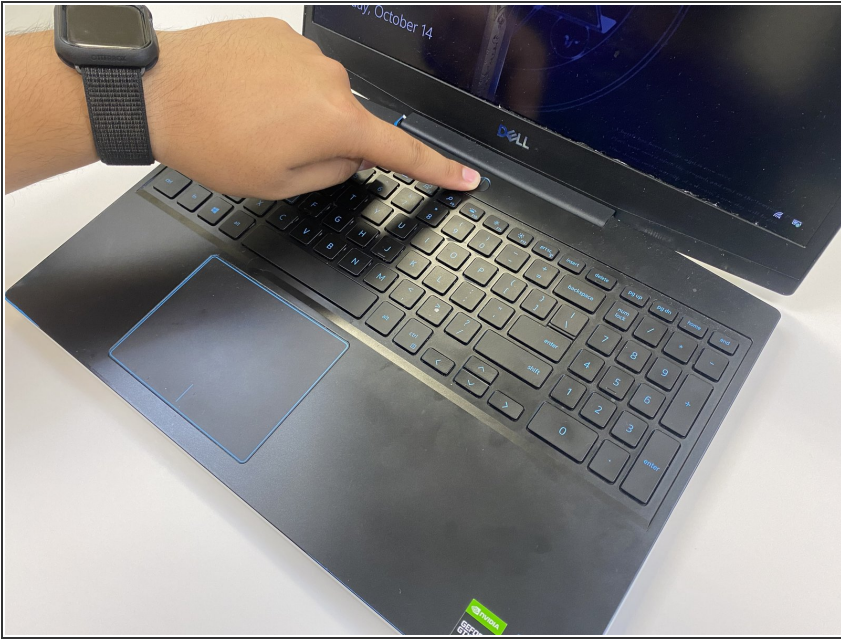
- [Phillips #00 Screwdriver](#) (1)
- [iFixit Opening Tool](#) (1)



PARTS:

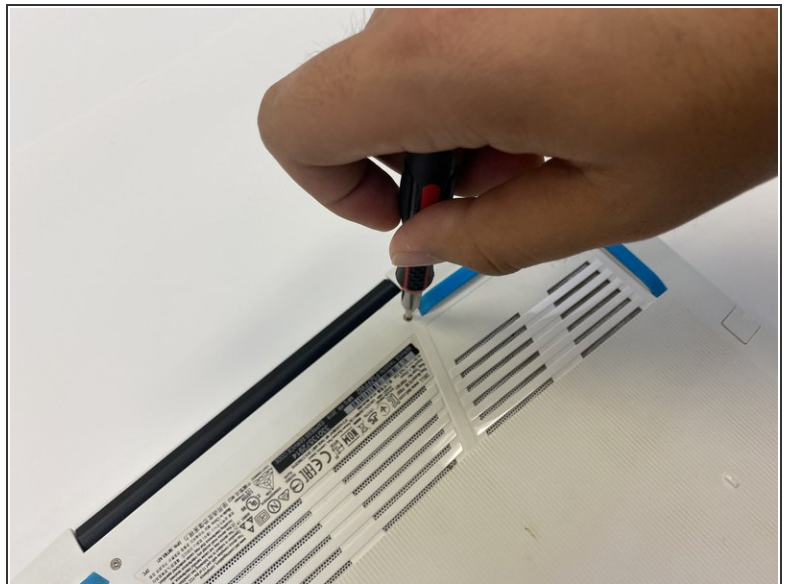
- [Crucial MX500 1 TB SSD](#) (1)
- [Crucial MX500 250 GB SSD](#) (1)
- [Crucial MX500 500 GB SSD](#) (1)
- [Crucial MX500 2 TB SSD](#) (1)

Step 1 — Hard Drive



- Shut down the laptop.

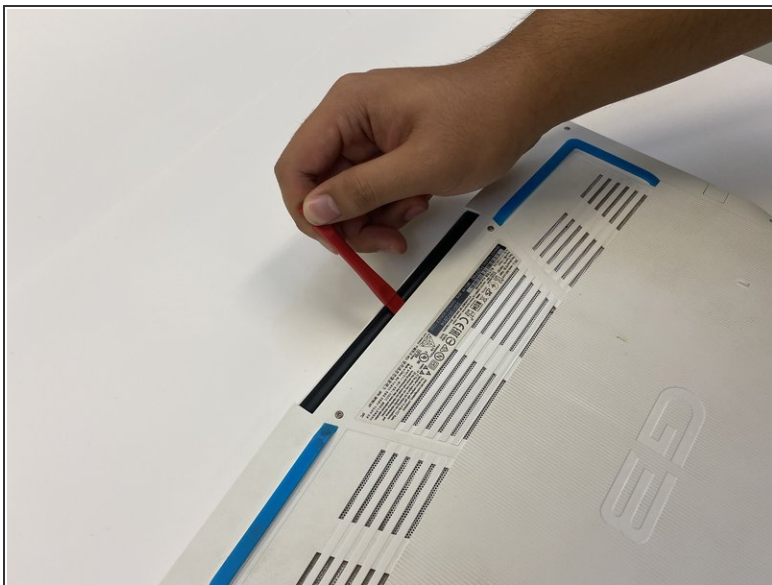
Step 2



- Use a Phillips #00 screwdriver to loosen the four captive screws in the bottom cover.
- ⓘ The captive screws will not come out. If you keep loosening the captive screws and hear clicks, then they are loosened enough.
- Remove six silver 7 mm screws using a Phillips #00 screwdriver.

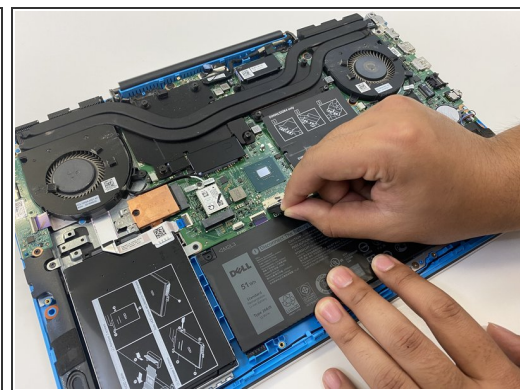
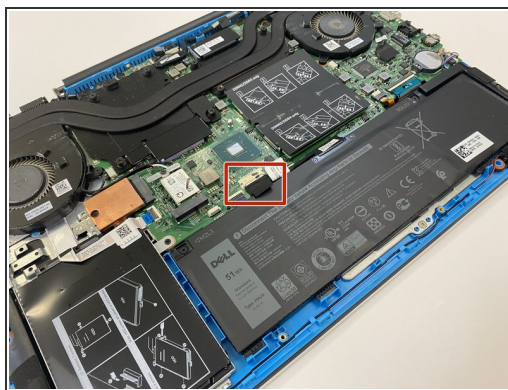
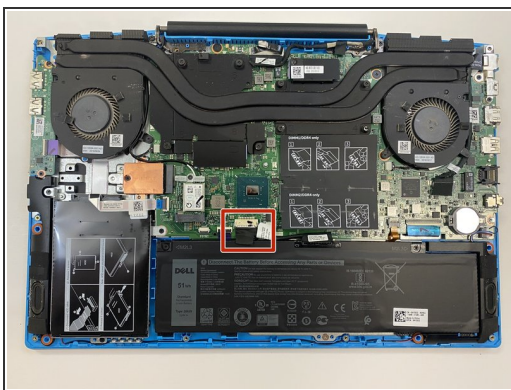
This document was generated on 2022-11-17 10:40:03 PM (MST).

Step 3



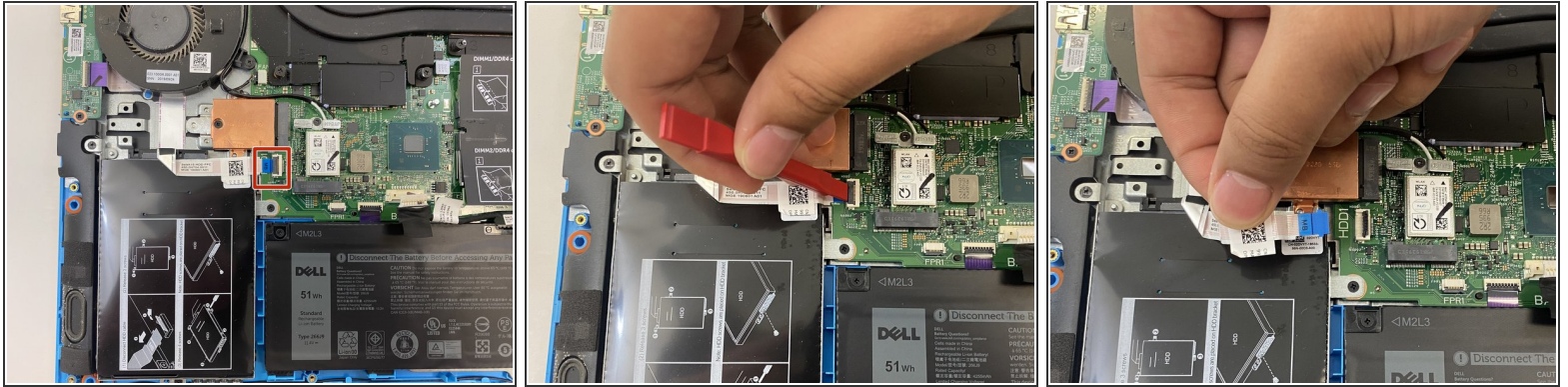
- Use the opening tool to pry the base cover from the laptop.
- Lift the base cover off.

Step 4



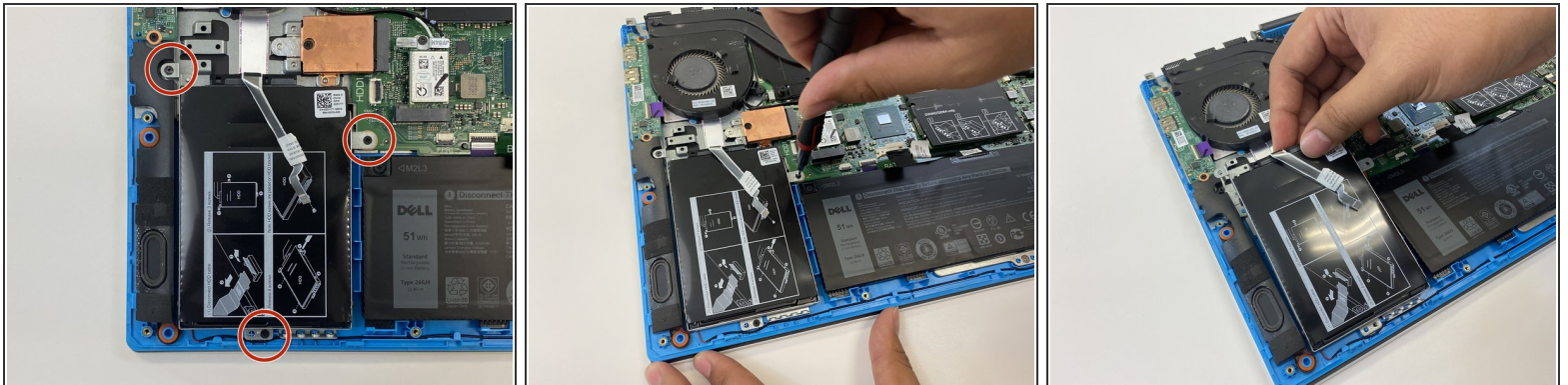
- Disconnect the battery cable from the system board.
- ⓘ Disconnecting the battery cable will require some gentle wiggling.

Step 5



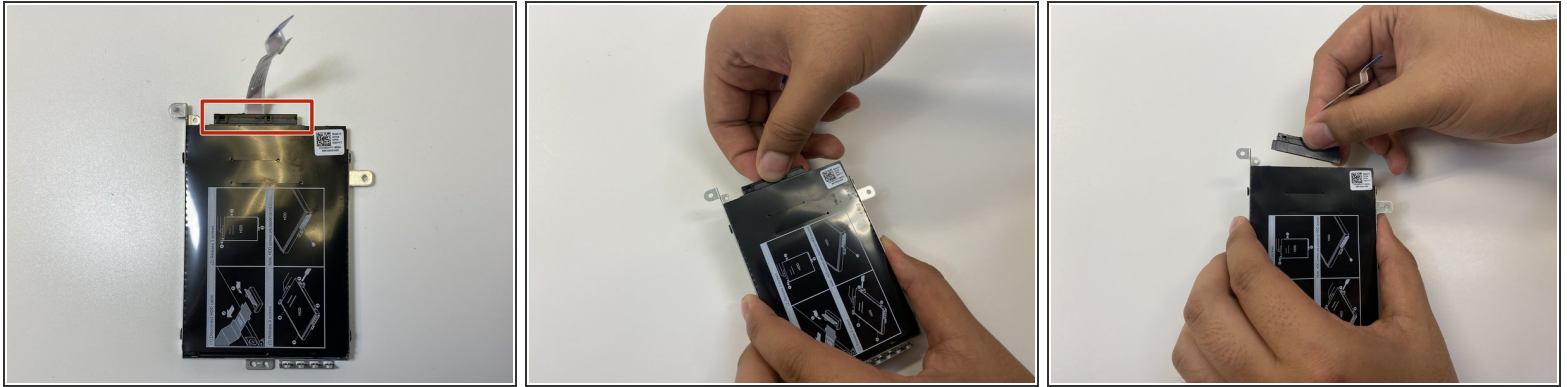
- Open the latch.
 - Disconnect the hard drive cable from the system board.
- i** The latch does not need the opening tool to open. You can use your fingernail.

Step 6



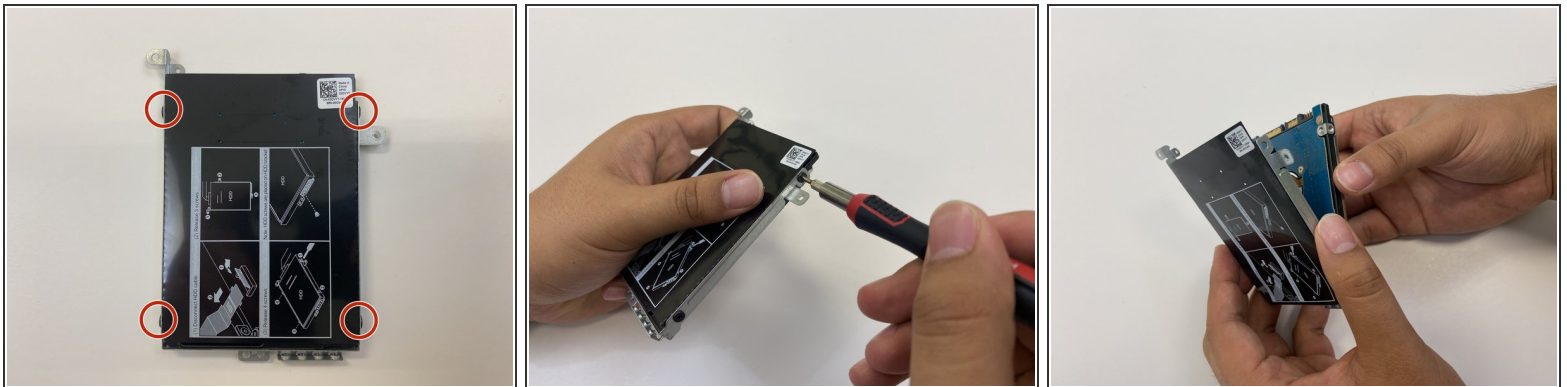
- Use a Phillips #00 screwdriver to remove three black 3 mm screws.
- Lift the hard drive assembly to remove it from the laptop.

Step 7



- Gently pull the interposer from the hard drive.
- i** Removing the interposer will require some work. Alternate pulling on one side, then the other until the interposer comes out.

Step 8



- Use a Phillips #00 screwdriver to remove four black 3 mm screws from the hard drive bracket.
- Remove the hard drive from the hard drive bracket.
- Add the new hard drive into the hard drive bracket.

Once you've inserted the new hard drive into the hard drive bracket, reassembling the device can be done by reversing the instructions back to step one. You should hear clicks when you put the base cover back. The clicks ensure that the base cover is secured to the laptop. After this, start up the laptop and ensure it properly starts up.

