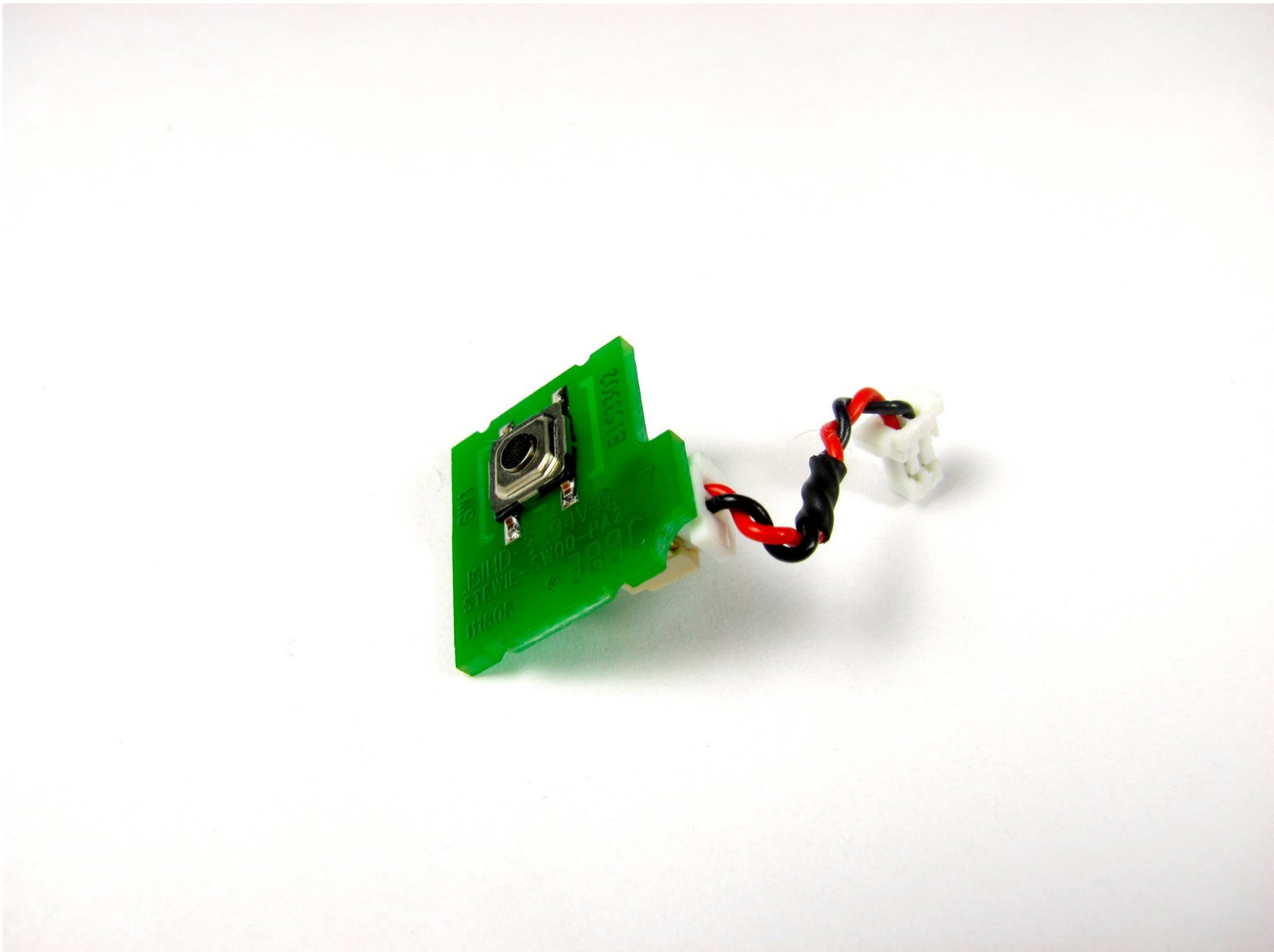




# Logitech Webcam Pro 9000 Snapshot Button Replacement

The button is to take snapshots and is actually...

Written By: Cory Davis



---

## INTRODUCTION

The button is to take snapshots and is actually a chip that is sending information to the motherboard to take a still shot of the camera view. If this connection is broken, you will need to replace it.

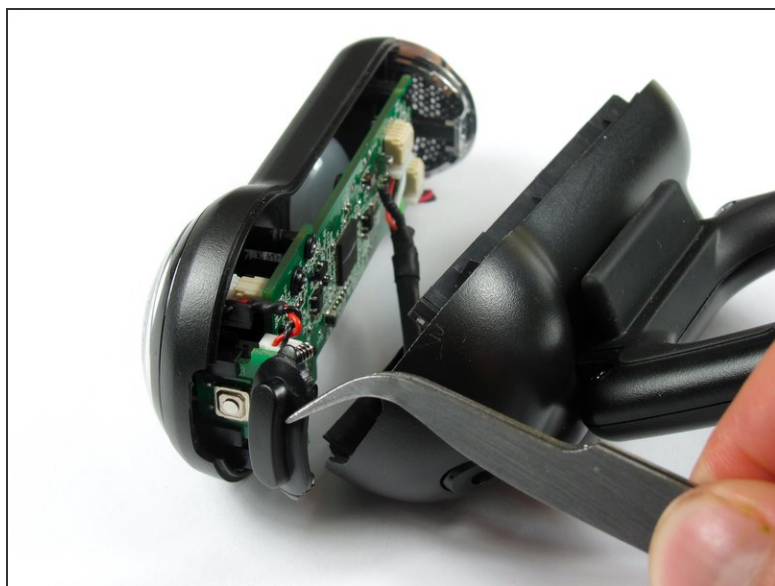
---



### TOOLS:

- [Tweezers](#) (1)
  - [Phillips #0 Screwdriver](#) (1)
-

## Step 1 — Front and Back Cover

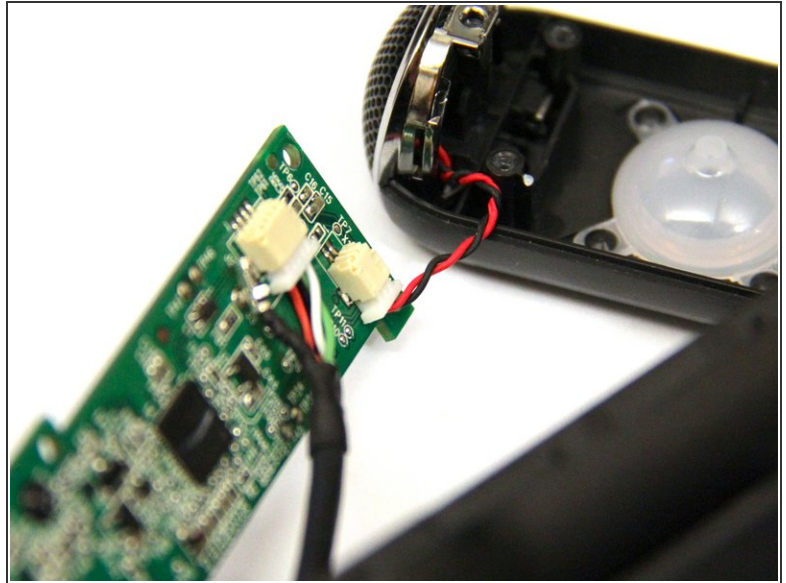
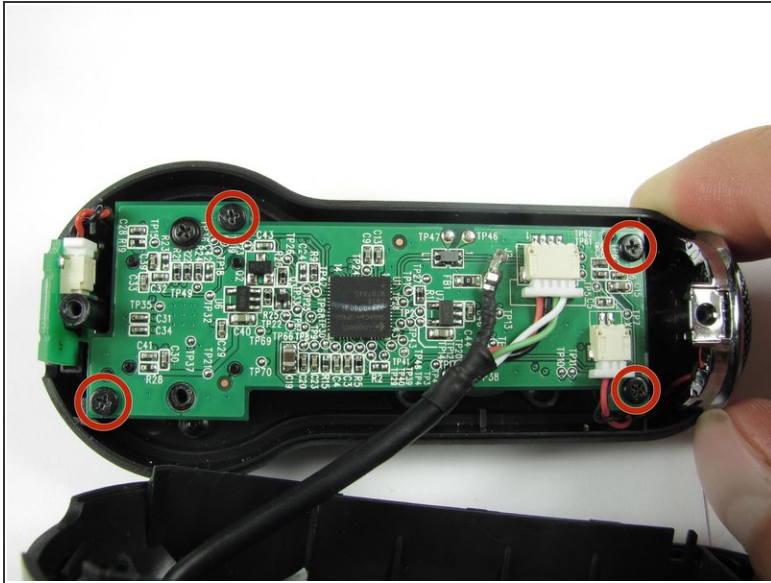


- Remove the two 8 mm Phillips #0 screws on the back cover.

⚠ The motherboard connects the two covers together. DO NOT separate the two yet.

i There is a button that loosens as the Phillips screws are removed. Don't be alarmed if it falls out.

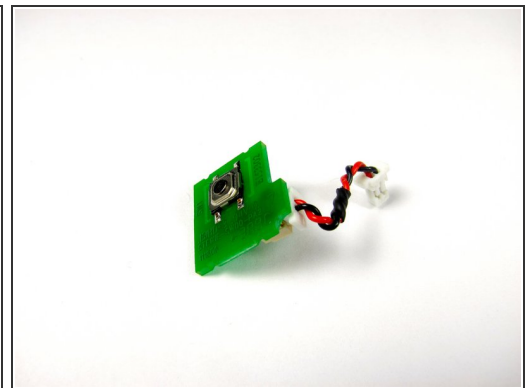
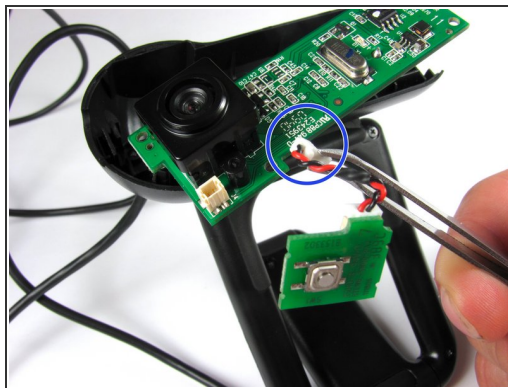
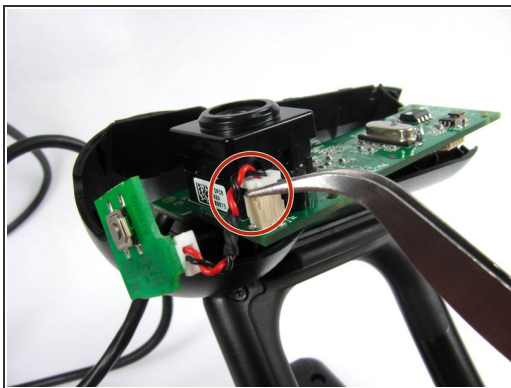
## Step 2



- Remove the four 6mm Phillips #0 screws connecting the motherboard and front cover.

**⚠ DO NOT** detach the wire connecting the motherboard to the front cover.

## Step 3 — Snapshot button



- Grasp the white connector attaching the button chip wire to the motherboard.  
☒ Grab between the tabs and the socket.
- Wiggle the connector back and forth to remove it from the connection box
- i** Do not worry if you detach the red and black wire connection on the power button.

To reassemble your device, follow these instructions in reverse order.